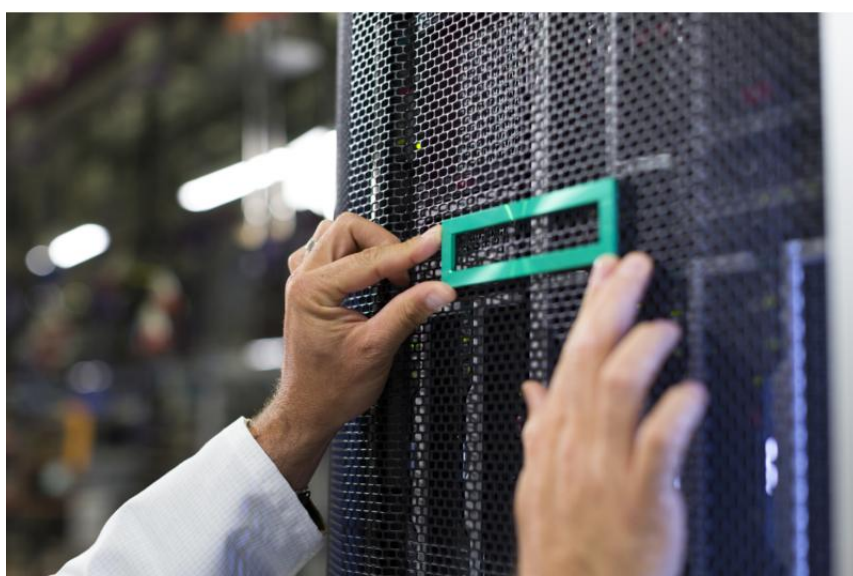




SMART UPDATE MANAGER (SUM)

System and Server Management Software



WHAT'S NEW

- Integrated with HPE iLO to provide secure updates via the management network.
- Firmware, driver, and system software validated as a complete set (SPP) ensures updates are applied efficiently and correctly.
- Built-in rollback to revert to last known good (bookmarked) update.
- Tamper-proof updates – firmware updates accessible only through HPE iLO and digitally validated.

OVERVIEW

Are you spending too much time and money on server updates?

Smart Update Manager (SUM) and the Service Pack for ProLiant (SPP) combine to create the Hewlett Packard Enterprise Smart Update Technology to solve the problem of time-consuming, expensive, and error-prone updates.

SUM is an innovative tool for keeping the firmware, drivers, and system software of HPE ProLiant, HPE Synergy, HPE BladeSystem and HPE Moonshot infrastructures and associated options up to date and secure.

- Convenient update process with minimal manual intervention via Smart Update integrations with HPE iLO Amplifier Pack and HPE OneView.

SUM discovers the installed hardware and the current versions of firmware, drivers, and system software, provides an update recommendation, and applies the updates in an efficient order to reduce impact on operations.

SUM provides a variety of interfaces for applying updates, so you can pick the interface that meets your needs. Update the servers while they are offline or online, locally or remotely via web browser, or interactively or automatically.

FEATURES

Increases Ease of Server Management

Smart Update Manager (SUM) allows the maintenance to come from the administrator at a console with a browser-based GUI, CLI, or interactive CLI versus having to physically touch each unit, thus reducing staff travel time.

In combination with the Service Pack for ProLiant (SPP), Hewlett Packard Enterprise delivers a complete solution for keeping Hewlett Packard Enterprise systems up and running with the latest firmware and drivers.

SUM integrations with HPE OneView and HPE iLO Amplifier Pack allow firmware, driver, and system software updates from within HPE OneView and HPE iLO Amplifier pack.

Integrated information on dependencies, including those of the HPE Onboard Administrator and HPE Virtual Connect, based on extensive testing of each Service Pack for ProLiant (SPP).

Deployment features including live logs which provide detailed information of target update process.

Increased Performance, Flexibility, and Security

Smart Update Manager (SUM) operates without the need for agents or other permanently installed software on the target nodes.

Baseline functionality including validation, assigning baselines in guided update, dynamic filtering, filtering by server model and the ability to download baselines from http server.

Provides tamper-proof updates, since the firmware updates are only accessible through HPE iLO and are digitally validated.

Simplified Delivery of ProLiant System Software

Smart Update Manager (SUM) provides shorter qualification cycles for customers, due to extensive interdependency testing of each Service Pack for ProLiant (SPP) and pre-loading of interdependency results into SUM.

Extremely efficient architecture of the Smart Update technology leads to a powerful, yet lightweight application with excellent scalability both standalone as well as integrated with HPE OneView, HPE iLO Amplifier Pack, and Intelligent Provisioning.



Extensive support of online firmware and driver updates, requiring only a single reboot to activate which leads to reduced downtime.

Documentation is easy to understand and use, with consistent format and content.



For additional technical information, available models and options, please reference the [QuickSpecs](#)

HPE POINTNEXT SERVICES

[HPE Pointnext Services](#) brings together technology and expertise to help you drive your business forward and prepare for whatever is next.

Operational Services from HPE Pointnext Services

[HPE Pointnext Tech Care](#) provides fast access to product-specific experts, an AI-driven digital experience, and general technical guidance to help enable constant innovation. We have reimagined IT support from the ground up to deliver faster answers and greater value. By continuously searching for better ways to do things—as opposed to just fixing things that break—HPE Pointnext Tech Care helps you focus on achieving your business goals.

[HPE Pointnext Complete Care](#) is a modular, edge-to-cloud IT environment service that provides a holistic approach to optimizing your entire IT environment, and achieving agreed upon IT outcomes and business goals through a personalized and customer-centric experience. All delivered by an assigned team of HPE Pointnext Services experts.

HPE Integration and Performance Services help you customize your experience at any stage of your product lifecycle with a menu of services based on individual needs, workloads, and technologies.

- Advise, design, and transform
- Deploy
- Integrate and migrate
- Operate and improve
- Financial Services
- Greenlake Management Services
- Retire and sanitize
- IT Training and personal development

Other related services

[HPE Education Services](#) delivers a comprehensive range of services to support your people as they expand their skills required for a digital transformation. Consult your HPE Sales Representative or Authorized Channel Partner of choice for any additional questions and support options.

Defective Media Retention is optional and allows you to retain Disk or eligible SSD/Flash Drives replaced by HPE due to malfunction.

HPE GREENLAKE

[HPE Greenlake](#) is HPE's market-leading IT as-a-Service offering that brings the cloud experience to apps and data everywhere – data centers, multi-clouds, and edges – with one unified operating model. HPE GreenLake delivers public cloud services and infrastructure for workloads on premises, fully managed in a pay per use model.

If you are looking for more services, like **IT financing solutions**, please [explore them here](#).

Make the right purchase decision.
Contact our presales specialists.

[Download](#)



© Copyright 2022 Hewlett Packard Enterprise Development LP. The information contained herein is subject to change without notice. The only warranties for Hewlett Packard Enterprise products and services are set forth in the express warranty statements accompanying such products and services. Nothing herein should be construed as constituting an additional warranty. Hewlett Packard Enterprise shall not be liable for technical or editorial errors or omissions contained herein.

Parts and Materials: HPE will provide HPE-supported replacement parts and materials required to maintain the covered hardware.

Parts and components that have reached their maximum supported lifetime and/or the maximum usage limitations as set forth in the manufacturer's operating manual, product quick-specs, or the technical product data sheet will not be provided, repaired, or replaced as part of these services.

Image may differ from the actual product
[PSN5182020NLEN](#), June, 2022.