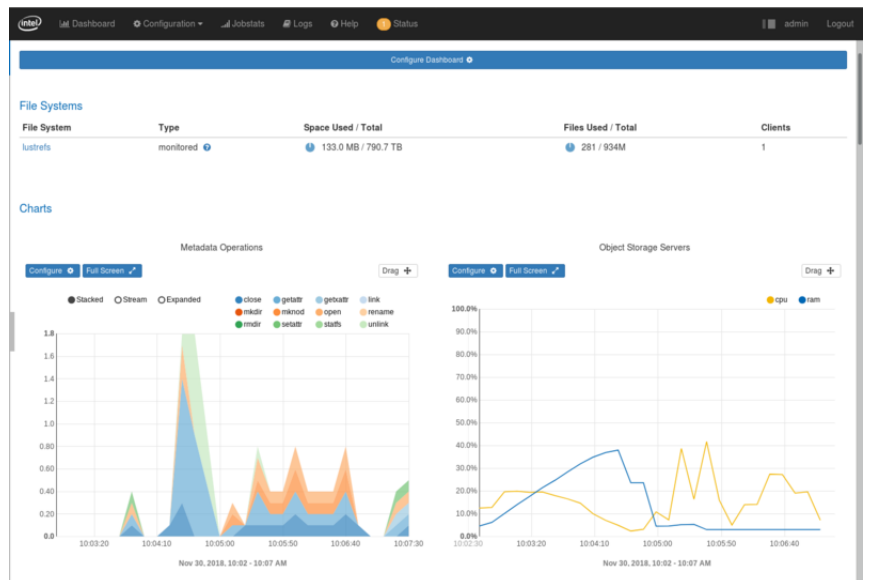


SCALABLE STORAGE FOR LUSTRE

High Performance Computing Storage Solutions



OVERVIEW

Are you looking for a custom, scalable HPC storage solution designed specifically for your needs? The Scalable Storage for Lustre solution offers a custom, modular Lustre configuration that can be tailored to specific workloads. Based on the HPE ProLiant DL360 Gen10 Server, HPE ProLiant DL380 Gen10 Server, HPE D3710 Enclosure, HPE MSA 2050 SAN Storage for metadata storage, and HPE D6020 Disk Enclosure for capacity storage, this solution provides flexibility in drive choices, tested configurations for reliability, and scalability through modularity. A Hewlett Packard Enterprise tested version of Community Lustre is provided, featuring the ZFS file

system for data integrity, data compression, and file system snapshots. The Integrated Manager for Lustre provides simplified system management and tuning via a web interface, and a tight integration with the HPE Data Management Framework (DMF) provides native automated file management and streamlined data workflows.

FEATURES

Custom Tailored Solutions for Specific Workloads

Scalable Storage for Lustre provides a modular architecture which offers multiple configurations for Lustre Object Storage Servers (OSS) and Metadata Servers (MDS).

Variety of lustre storage enclosures to meet bandwidth, IOPS, and capacity requirements. Streaming performance of up to 18 Gbps to 20 Gbps per OSS pair and up to 3.5PB max capacity.

Engineered for reliability with servers configured as high availability (HA) redundant pairs and storage targets cabled for full multipath connection.

Simplified system management and tuning using the Integrated Manager for Lustre.

Robust, Full-featured Lustre Implementation

Community Lustre implementation with the ZFS, the Scalable Storage for Lustre provides data integrity through built-in check sums of data and self-healing of damaged data.

ZFS file system offers storage configuration flexibility through a variety of software RAID configurations.

Rapid creation of system image using snapshot functionality.

Increases storage capacity using data compression.

Enhanced File System Management with HPE Data Management Framework Integration

Scalable Storage for Lustre enhances native file management using the DMF policy engine to create a tiered data model, automated data management policies and streamlined data workflows.

Simplify the Lustre configuration by removing the requirement to install the Lustre Robinhood engine and its separate tracking database.

Technical specifications

Scalable Storage for Lustre

Warranty

1-Year Parts, 1-Year Labor, 1-Year Onsite support with next business day response



For additional technical information, available models and options, please reference [the QuickSpecs](#)

HPE POINTNEXT SERVICES

[HPE Pointnext Services](#) brings together technology and expertise to help you drive your business forward and prepare for whatever is next.

Operational Services from HPE Pointnext Services

[HPE Pointnext Tech Care](#) provides fast access to product-specific experts, an AI-driven digital experience, and general technical guidance to help enable constant innovation. We have reimagined IT support from the ground up to deliver faster answers and greater value. By continuously searching for better ways to do things—as opposed to just fixing things that break—HPE Pointnext Tech Care helps you focus on achieving your business goals.

[HPE Pointnext Complete Care](#) is a modular, edge-to-cloud IT environment service that provides a holistic approach to optimizing your entire IT environment, and achieving agreed upon IT outcomes and business goals through a personalized and customer-centric experience. All delivered by an assigned team of HPE Pointnext Services experts.

HPE Integration and Performance Services help you customize your experience at any stage of your product lifecycle with a menu of services based on individual needs, workloads, and technologies.

- Advise, design, and transform
- Deploy
- Integrate and migrate
- Operate and improve
- Financial Services
- Greenlake Management Services
- Retire and sanitize
- IT Training and personal development

Other related services

[HPE Education Services](#) delivers a comprehensive range of services to support your people as they expand their skills required for a digital transformation. Consult your HPE Sales Representative or Authorized Channel Partner of choice for any additional questions and support options.

Defective Media Retention is optional and allows you to retain Disk or eligible SSD/Flash Drives replaced by HPE due to malfunction.

HPE GREENLAKE

[HPE Greenlake](#) is HPE's market-leading IT as-a-Service offering that brings the cloud experience to apps and data everywhere – data centers, multi-clouds, and edges – with one unified operating model. HPE GreenLake delivers public cloud services and infrastructure for workloads on premises, fully managed in a pay per use model.

If you are looking for more services, like **IT financing solutions**, please [explore them here](#).

Make the right purchase decision.
Contact our presales specialists.

[Call for availability](#)



© Copyright 2022 Hewlett Packard Enterprise Development LP. The information contained herein is subject to change without notice. The only warranties for Hewlett Packard Enterprise products and services are set forth in the express warranty statements accompanying such products and services. Nothing herein should be construed as constituting an additional warranty. Hewlett Packard Enterprise shall not be liable for technical or editorial errors or omissions contained herein.

Parts and Materials: HPE will provide HPE-supported replacement parts and materials required to maintain the covered hardware.

Parts and components that have reached their maximum supported lifetime and/or the maximum usage limitations as set forth in the manufacturer's operating manual, product quick-specs, or the technical product data sheet will not be provided, repaired, or replaced as part of these services.

Image may differ from the actual product
[PSN1008849030MYEN](#), September, 2022.