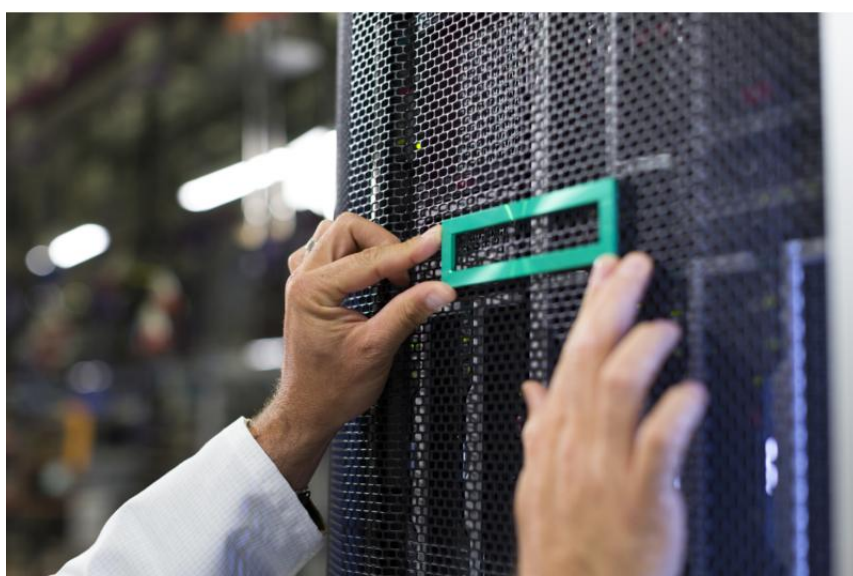




HPE STORAGE PLUG-IN FOR SAP LVM

Storage Device Management Software



WHAT'S NEW

- Support for SAP NW LVM v2.1 for HPE 3PAR and HPE XP7 Storage
- Available on VMware vSphere 5.5, RHEL v6.5 and SLES v11.0 SP3
- Enhanced flexibility in SAP clone/refresh/instance re-location operation by mapping multiple Logical Volumes to multiple physical volumes
- Customers can easily obtain information on Volume groups for multiple logical volumes through SAP NW LVM user interface

OVERVIEW

HPE Storage Plug-in for SAP Landscape Virtualization Management (LVM) is a high-performance and easy-to-use software to manage SAP landscapes in physical, virtual and cloud environments. It enables automation for customers to sync the data in Development, Training and Test environments with the Production environment. It provides a complete solution for administrators to make clones and refresh the SAP system/landscapes. The customers can also migrate SAP applications across the physical and virtual infrastructure. This reduces the administrative effort to manage SAP landscapes and improves productivity.

- Customers can execute SAP clone/refresh/instance re-location operations for SAP instances running on multiple VMware vCenters
- Eliminates user dependency on adding storage array WWN in the mount point configuration

The customers can use this software for HPE 3PAR StoreServ Storage and HPE XP/P9500 Storage running in VMware, HP-UX, Windows and Linux environments with SAP LVM v2.0 and 2.1(latest).

FEATURES

Simplify Management of SAP Systems and Landscapes (Traditional and Virtualized) on HPE Storage

Enables automation for System Clone and Refresh of SAP Systems/landscapes.

Reduces cost, time and effort to operate SAP systems thereby improving productivity.

Improves Operational Continuity and Data Consistency

Enhances flexibility in making development and test data consistent with Production data.

Reduces downtime of SAP systems in production.

Enables Monitoring of SAP Systems, Infrastructure Metrics and Status in Real Time

Single visualization view to monitor and manage SAP systems.

Enables task scheduling and mass operations to meet SLA levels.

End-to-end visibility, monitoring, and management of SAP and non-SAP applications in virtual infrastructure.

Broad integration matrix

Support SAP LVM 2.1 for HPE 3PAR StoreServ Storage and HPE XP7 Storage

Available on VMware vSphere 5.1/5.5

Available on Windows 2012/2008R2, HP-UX 11iv3, RHEL v6.1/v6.3/v6.5 and SLES v11.0/SP3



For additional technical information, available models and options, please reference the [QuickSpecs](#)

HPE POINTNEXT SERVICES

HPE Pointnext Services brings together technology and expertise to help you drive your business forward and prepare for whatever is next.

Operational Services from HPE Pointnext Services

HPE Pointnext Tech Care provides fast access to product-specific experts, an AI-driven digital experience, and general technical guidance to help enable constant innovation. We have reimagined IT support from the ground up to deliver faster answers and greater value. By continuously searching for better ways to do things—as opposed to just fixing things that break—HPE Pointnext Tech Care helps you focus on achieving your business goals.

HPE Pointnext Complete Care is a modular, edge-to-cloud IT environment service that provides a holistic approach to optimizing your entire IT environment, and achieving agreed upon IT outcomes and business goals through a personalized and customer-centric experience. All delivered by an assigned team of HPE Pointnext Services experts.

HPE Integration and Performance Services help you customize your experience at any stage of your product lifecycle with a menu of services based on individual needs, workloads, and technologies.

- Advise, design, and transform
- Deploy
- Integrate and migrate
- Operate and improve
- Financial Services
- Greenlake Management Services
- Retire and sanitize
- IT Training and personal development

Other related services

HPE Education Services delivers a comprehensive range of services to support your people as they expand their skills required for a digital transformation. Consult your HPE Sales Representative or Authorized Channel Partner of choice for any additional questions and support options.

Defective Media Retention is optional and allows you to retain Disk or eligible SSD/Flash Drives replaced by HPE due to malfunction.

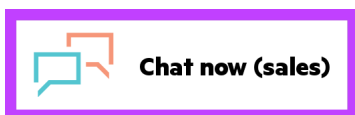
HPE GREENLAKE

HPE Greenlake is HPE's market-leading IT as-a-Service offering that brings the cloud experience to apps and data everywhere – data centers, multi-clouds, and edges – with one unified operating model. HPE GreenLake delivers public cloud services and infrastructure for workloads on premises, fully managed in a pay per use model.

If you are looking for more services, like **IT financing solutions**, please [explore them here](#).

Make the right purchase decision.
Contact our presales specialists.

[Find a partner](#)



Share now



Get updates

**Hewlett Packard
Enterprise**

© Copyright 2022 Hewlett Packard Enterprise Development LP. The information contained herein is subject to change without notice. The only warranties for Hewlett Packard Enterprise products and services are set forth in the express warranty statements accompanying such products and services. Nothing herein should be construed as constituting an additional warranty. Hewlett Packard Enterprise shall not be liable for technical or editorial errors or omissions contained herein.

Parts and Materials: HPE will provide HPE-supported replacement parts and materials required to maintain the covered hardware.

Parts and components that have reached their maximum supported lifetime and/or the maximum usage limitations as set forth in the manufacturer's operating manual, product quick-specs, or the technical product data sheet will not be provided, repaired, or replaced as part of these services.

SAP® is a registered trademark of SAP AG; Red Hat® Enterprise Linux® Red Hat is a trademark of Red Hat, Inc. in the U.S. and other countries. Linux is a registered trademark of Linus Torvalds; vSphere® is a registered trademark of VMware, Inc. in the United States and/or other jurisdictions; VMware® is a registered trademark of VMware, Inc. in the United States and/or other jurisdictions; SAP® is a registered trademark of SAP AG; Windows® is a registered trademark of Microsoft Corporation in the United States and other countries.

Image may differ from the actual product
[PSN8744104AEEN](#), May, 2022.