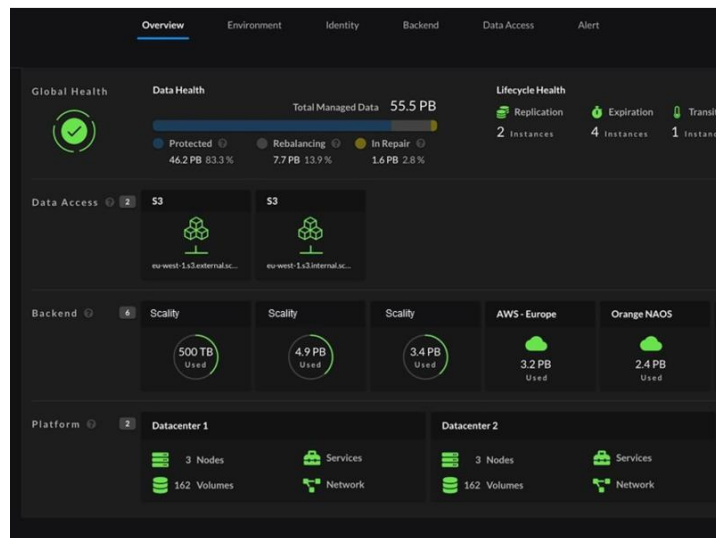


HPE Solutions for Scality

Scale-Out Enterprise File and Object Storage



What's new

- Scality ARTESCA: Co-designed Hewlett Packard Enterprise-Scality portfolio of S3-compatible fast object storage solutions.
- Entry-points starting with just a single server and tens of terabytes with seamless scaling to clusters with petabyte capacity.
- More platform choices and more performance with all-NVMe and all-QLC object storage.
- Even more data durability, without added overhead, using dual-level erasure coding.

Overview

Does your organization need an on-premises cloud storage solution for modern data-intensive applications? HPE Solutions for Scality provide object storage for scalable unstructured data archives and tiers behind primary storage arrays. Now, cloud-native applications and high-performance analytics tools are increasingly using object and the S3 API as their persistent storage layer. To meet this need, Hewlett Packard Enterprise and Scality® offer two solutions that scale easily from terabytes to petabytes on a full portfolio of customizable platforms and media types.

For Enterprise IT:

Scality RING enable enterprises to quickly build on-premises object storage in scalable clusters, with native S3 API and file access protocols.

For Application Developers:

Scality ARTESCA is a fully-containerized object storage solution with built-in multi-cloud federated data management for S3-centric data workloads and ultra-reliable dual-level erasure coding.

Features

WebScale Architecture with Edge-to-Core S3 API

HPE Solutions for Scality feature webscale architecture, offering flexibility for fast and unified data access, and the ability to respond to changing business needs. Native S3 API provides enterprise-class operations for multi-tenancy user access and control.

Scality RING provides cloud storage on-premises with data capacity from terabytes to exabytes in a single name space. Multiple single- and geo-dispersed data configurations include erasure coding across sites. S3 API and file protocols provide connection to most business applications.

Scality ARTESCA features fully-containerized and customized for S3 access from cloud-native applications. Achieve easier entry-point with single node configurations and seamless scaling to petabyte-sized clusters. Provides even more data durability with dual-level erasure coding.

Fast Object Storage at the Edge

HPE Solutions for Scality use fast object storage with performance-based workloads, especially data-intensive or in-memory applications that are increasingly processing data outside the data center at the edge.

Reduce latency and increase throughput with more all-flash choices including economical QLC media and top-performance NVMe. With no lock-in to proprietary flash modules, the HPE solution supports standard server media options for the right capacity at excellent price points.

Scality ARTESCA: Easier entry-points help make object storage practical in smaller sizes, starting with as little as a single node and just tens of terabytes, available for all platforms.

Built-in Federated Data Management

HPE Solutions for Scality has integrated, federated data management to break down silos and enables data portability.

Automate tasks such as copy data management, archive/expire, and cloud bursting in native format. Metadata tags can be more easily customized and searched.

A graphical user interface provides a view of the health of the data service so that clients have uninterrupted access to data across infrastructures including network elements and storage servers.

Portfolio of Systems: Hybrid and All-NVMe

Hewlett Packard Enterprise has certified Scality solutions on these platforms: HPE ProLiant DL325 Gen10 Plus with all-NVMe, HPE Apollo 4200 Gen10 with all-QLC, HPE Apollo 4200 Gen10 and HPE Apollo 4510 Gen10 with hybrid capacity.

Seamlessly scale from tens of terabytes to hundreds of petabytes with these highly customizable solutions for multiple platforms and media types.



Technical specifications

HPE Solutions for Scality

Capacity	Scalable to Petabytes of usable capacity by adding server nodes to the cluster
Host interface	Ethernet
Protocol supported	Scality RING supports S3, Swift, SMB, and REST. Scality ARTESCA supports S3.
Storage expansion options	Storage is expanded by adding disks to the storage servers, and by adding Scality nodes to the cluster
Compatible operating systems	Linux®
Clustering support	A minimum of three nodes is required for a Scality RING cluster. A minimum of one node with ten drives, or a cluster of three nodes or more is required for a Scality ARTESCA solution.



For additional technical information, available models and options, please reference the [QuickSpecs](#)

HPE Pointnext Services

[HPE Pointnext Services](#) brings together technology and expertise to help you drive your business forward and prepare for whatever is next.

Operational Services from HPE Pointnext Services

[HPE Pointnext Tech Care](#) provides fast access to product-specific experts, an AI-driven digital experience, and general technical guidance to help enable constant innovation. We have reimagined IT support from the ground up to deliver faster answers and greater value. By continuously searching for better ways to do things—as opposed to just fixing things that break—HPE Pointnext Tech Care helps you focus on achieving your business goals.

[HPE Pointnext Complete Care](#) is a modular, edge-to-cloud IT environment service that provides a holistic approach to optimizing your entire IT environment, and achieving agreed upon IT outcomes and business goals through a personalized and customer-centric experience. All delivered by an assigned team of HPE Pointnext Services experts.

HPE Integration and Performance Services help you customize your experience at any stage of your product lifecycle with a menu of services based on individual needs, workloads, and technologies.

- Advise, design, and transform
- Deploy
- Integrate and migrate
- Operate and improve
- Financial Services
- GreenLake Management Services
- Retire and sanitize
- IT Training and personal development

Other related services

[HPE Education Services](#) delivers a comprehensive range of services to support your people as they expand their skills required for a digital transformation. Consult your HPE Sales Representative or Authorized Channel Partner of choice for any additional questions and support options.

Defective Media Retention is optional and allows you to retain Disk or eligible SSD/Flash Drives replaced by HPE due to malfunction.

HPE GreenLake

[HPE GreenLake](#) is HPE's market-leading IT as-a-Service offering that brings the cloud experience to apps and data everywhere – data centers, multi-clouds, and edges – with one unified operating model. HPE GreenLake delivers public cloud services and infrastructure for workloads on premises, fully managed in a pay per use model.

If you are looking for more services, like **IT financing solutions**, please [explore them here](#).

Explore **HPE GreenLake**

Make the right purchase decision.
Contact our presales specialists.

[Call for availability](#)



Chat now (sales)



Call now



Share now



Get updates


**Hewlett Packard
Enterprise**

© Copyright 2023 Hewlett Packard Enterprise Development LP. The information contained herein is subject to change without notice. The only warranties for Hewlett Packard Enterprise products and services are set forth in the express warranty statements accompanying such products and services. Nothing herein should be construed as constituting an additional warranty. Hewlett Packard Enterprise shall not be liable for technical or editorial errors or omissions contained herein.

Parts and Materials: HPE will provide HPE-supported replacement parts and materials required to maintain the covered hardware.

Parts and components that have reached their maximum supported lifetime and/or the maximum usage limitations as set forth in the manufacturer's operating manual, product quick-specs, or the technical product data sheet will not be provided, repaired, or replaced as part of these services.

Scality and the Scality logo are registered trademarks of Scality, INC. All other marks and names herein may be trademarks of other companies. Copyright © 2019. All Rights Reserved. Linux is the registered trademark of Linus Torvalds in the U.S. and other countries. All other third-party trademark(s) is/are property of their respective owner(s).

Image may differ from the actual product
[PSN7460684BREN](#), February, 2023.