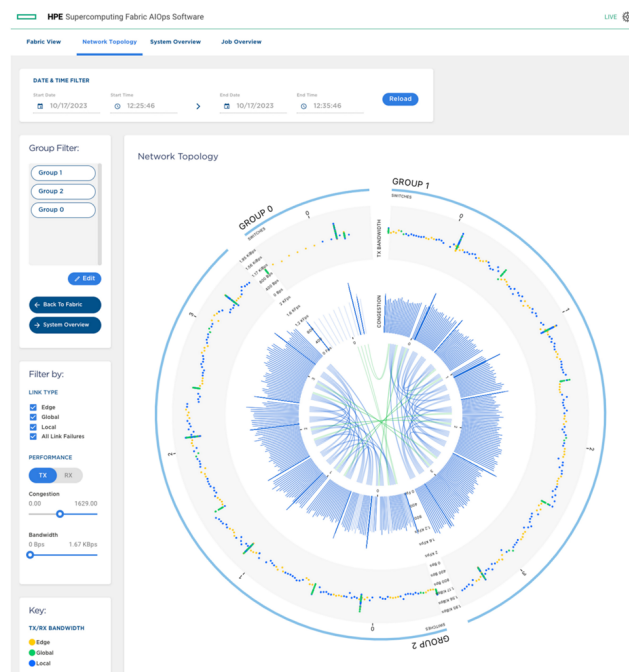


HPE Slingshot AIOps Software

HPE Slingshot AIOps Software 3-year E-RTU (S3K64AAE)



What's new

- Scalable Telemetry Ingest, Analysis, and Graphical Display of HPE Slingshot Interconnect behavior.
- Integration with HPE Performance Cluster Manager, Apache Kafka, and the Slurm work load manager.
- Achieve insight with network analytics of network bandwidth, network congestion, and active jobs.

Overview

Is your HPE Slingshot interconnected system delivering high performance and efficiency? HPE Cray Supercomputing Fabric AIOps Software fuses large scale telemetry data ingest with job and topology information to power analytics that deliver insights into interconnect behavior and possible issues. Understanding how a large complex interconnected computing system behaves is a daunting task. The unique telemetry from HPE Slingshot's premier congestion management capabilities and HPE Cray Supercomputing Fabric AIOps Software provides insights which can be used to increase system, workload and application performance, and improve return on investment while reducing the burden and costs of operating a complex system. By Informing system administrators of congestion hot-spots, anomalies, and patterns in the interconnect traffic, HPE Cray Supercomputing Fabric AIOps empowers them to more rapidly detect

potential issues, unveil relationships, take preventive action, and improve operations.

Features

Increase the Effectiveness of Administrators in Identifying and Troubleshooting Performance Issues

HPE Cray Supercomputing Fabric AIOps Software offers easy to use graphical displays of analysis results, allowing improved understanding of HPE Slingshot system interconnect performance and behavior.

Easily view large HPE Slingshot Interconnect telemetry data sets.

Labels Critical Performance Telemetry with Job and Topology Information for Easy Understanding

HPE Cray Supercomputing Fabric AIOps Software expertly ingests and analyzes HPE Slingshot telemetry and workload manager data.

Link HPE Slingshot behavior to the set of jobs executing jobs.

Customizable Views Improve Administrator Efficiency

Use HPE Cray Supercomputing Fabric AIOps Software to observe the behavior of the entire network or drill down to focus on specific switch groups or individual switches.

Built on an open visualization infrastructure that allows customization.

HPE Services

No matter where you are in your transformation journey, you can count on HPE Services to deliver the expertise you need when, where and how you need it. From strategy and planning to deployment, ongoing operations and beyond, our experts can help you realize your digital ambitions.

Advisory & Professional services

Experts can help you map out your path to hybrid cloud and optimize your operations.

Managed services

HPE runs your IT operations, giving you unified control, so can focus on innovation.

Support services

Optimize your entire IT environment and drive innovation. Manage day-to-day IT operational tasks while freeing up valuable time and resources.

- **HPE Complete Care Service:** a modular service designed to help optimize your entire IT environment and achieve agreed upon IT outcomes and business goals. All delivered by an assigned team of HPE experts.
- **HPE Tech Care Service:** the operational service experience for HPE products. The service provides access to product specific experts, an AI driven digital experience, and general technical guidance to help reduce risk and search for ways to do things better.
- **HPE Multivendor Services:** Single point of accountability for managing on-site hardware and software support for multivendor products. HPE experts help manage your IT across technologies and platforms for HPE and non-HPE technologies, acting as the single point of contact for your IT operational needs.

Lifecycle Services

Address your specific IT deployment project needs with tailored project management and deployment services.

HPE Education Services

Training and certification designed for IT and business professionals across all industries. Create learning paths to expand proficiency in a specific subject. Schedule training in a way that works best for your business with flexible continuous learning options

Defective Media Retention is optional and allows you to retain Disk or eligible SSD/Flash Drives replaced by HPE due to malfunction.

GreenLake

[GreenLake](#) is the cloud to run and manage your entire hybrid landscape—private, public, and edge. It helps you to:

- Streamline IT Operations across compute, storage, and networking without the chaos
- Unify and secure data, as you move faster
- Accelerate AI, from pilot to production

The result: greater operational efficiency, lower TCO, and faster AI delivery—all from one unified, intelligent platform built for today's hybrid enterprise.

[For additional technical information, available models and options, please reference the QuickSpecs](#)

Visit [HPE.com](https://www.hpe.com)

[Chat now](#)

© Copyright 2026 Hewlett Packard Enterprise Development LP. The information contained herein is subject to change without notice. The only warranties for Hewlett Packard Enterprise products and services are set forth in the express warranty statements accompanying such products and services. Nothing herein should be construed as constituting an additional warranty. Hewlett Packard Enterprise shall not be liable for technical or editorial errors or omissions contained herein.

Parts and Materials: HPE will provide HPE-supported replacement parts and materials required to maintain the covered hardware.

Parts and components that have reached their maximum supported lifetime and/or the maximum usage limitations as set forth in the manufacturer's operating manual, product quick-specs, or the technical product data sheet will not be provided, repaired, or replaced as part of these services.

Linux is the registered trademark of Linus Torvalds in the U.S. and other countries. All third-party marks are property of their respective owners.

Image may differ from the actual product.

[PSN1014800851DKEN](#), June, 2026.

HEWLETT PACKARD ENTERPRISE

[hpe.com](https://www.hpe.com)

