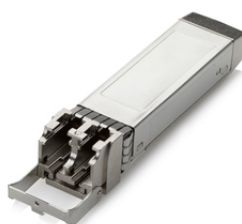




# HPE SFP+ TRANSCEIVERS

## Server Transceivers



### WHAT'S NEW

- SFP+ form factor
- 10G Ethernet transmission speed
- 400m transmissions on OM4 multi-mode cable
- 300m transmissions on OM3 multi-mode cable
- 850nm wavelength

### OVERVIEW

A 10-Gigabit transceiver in SFP+ form-factor that supports the 10-Gigabit SR standard, providing 10-Gigabit connectivity up to 400m on OM4 multi-mode fiber.

### FEATURES

#### Featured Characteristics

10Gb Ethernet transmission rate with SFP+ form factor

Transmissions are up to 300m on MMF (SR), up to 220 m MMF (LRM) and 10 km on SMF (LR)

Low power consumption at <0.8W for SR, <1W for LRM and LR

Duplex LC connector

For additional technical information, available models and options, please reference the [QuickSpecs](#)

## HPE POINTNEXT SERVICES

[HPE Pointnext Services](#) brings together technology and expertise to help you drive your business forward and prepare for whatever is next.

### Operational Services from HPE Pointnext Services

[HPE Pointnext Tech Care](#) provides fast access to product-specific experts, an AI-driven digital experience, and general technical guidance to help enable constant innovation. We have reimagined IT support from the ground up to deliver faster answers and greater value. By continuously searching for better ways to do things—as opposed to just fixing things that break—HPE Pointnext Tech Care helps you focus on achieving your business goals.

[HPE Pointnext Complete Care](#) is a modular, edge-to-cloud IT environment service that provides a holistic approach to optimizing your entire IT environment, and achieving agreed upon IT outcomes and business goals through a personalized and customer-centric experience. All delivered by an assigned team of HPE Pointnext Services experts.

**HPE Integration and Performance Services** help you customize your experience at any stage of your product lifecycle with a menu of services based on individual needs, workloads, and technologies.

- Advise, design, and transform
- Deploy
- Integrate and migrate
- Operate and improve
- Financial Services
- Greenlake Management Services
- Retire and sanitize
- IT Training and personal development

### Other related services

[HPE Education Services](#) delivers a comprehensive range of services to support your people as they expand their skills required for a digital transformation. Consult your HPE Sales Representative or Authorized Channel Partner of choice for any additional questions and support options.

**Defective Media Retention** is optional and allows you to retain Disk or eligible SSD/Flash Drives replaced by HPE due to malfunction.

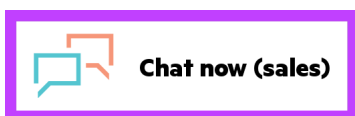
## HPE GREENLAKE

[HPE Greenlake](#) is HPE's market-leading IT as-a-Service offering that brings the cloud experience to apps and data everywhere – data centers, multi-clouds, and edges – with one unified operating model. HPE GreenLake delivers public cloud services and infrastructure for workloads on premises, fully managed in a pay per use model.

If you are looking for more services, like **IT financing solutions**, please [explore them here](#).

**Make the right purchase decision.**  
Contact our presales specialists.

[Find a partner](#)



**Share now**



**Get updates**

© Copyright 2022 Hewlett Packard Enterprise Development LP. The information contained herein is subject to change without notice. The only warranties for Hewlett Packard Enterprise products and services are set forth in the express warranty statements accompanying such products and services. Nothing herein should be construed as constituting an additional warranty. Hewlett Packard Enterprise shall not be liable for technical or editorial errors or omissions contained herein.

Parts and Materials: HPE will provide HPE-supported replacement parts and materials required to maintain the covered hardware.

Parts and components that have reached their maximum supported lifetime and/or the maximum usage limitations as set forth in the manufacturer's operating manual, product quick-specs, or the technical product data sheet will not be provided, repaired, or replaced as part of these services.

Image may differ from the actual product  
[PSN7263510WWEN](#), July, 2022.