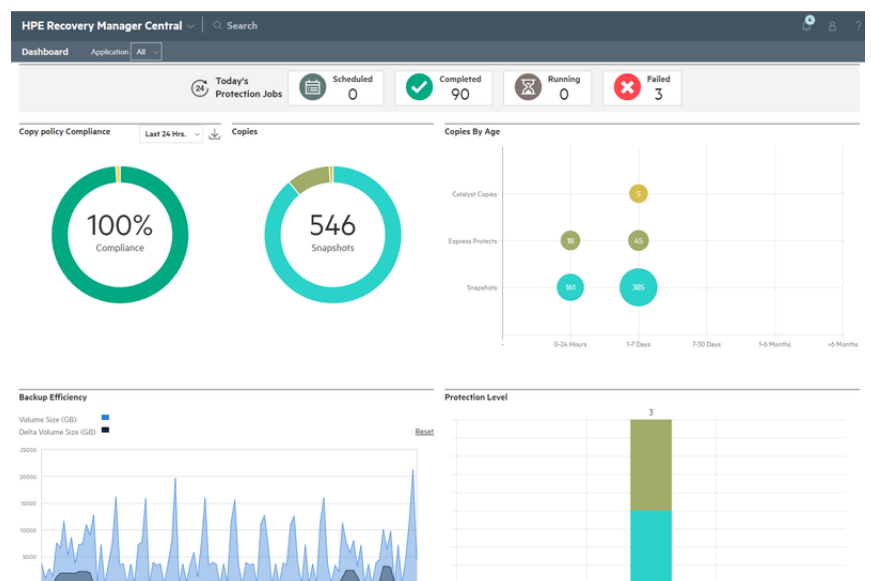


# HPE RECOVERY MANAGER SOFTWARE

## Storage Replication Software



## OVERVIEW

Is your data protection solution causing your Exchange/SQL administrative costs to spiral out of control?

HPE Recovery Manager Software for Microsoft Exchange Server and Microsoft SQL Server eases administration by providing efficient online backup and recovery of entire Microsoft Exchange Server/SQL databases from multiple, highly granular points in time. Recovery Manager intelligently creates and manages highly granular and capacity-efficient Exchange/SQL database aware snapshots. These snapshots can then be used to quickly restore Exchange/SQL instances or databases, or to non-disruptively back them up to tape for

near-continuous data protection. Since Recovery Manager is built on HPE P2000 G3 Snapshot software multiple snapshots can be kept online economically, allowing for extended or frequent Exchange/SQL database recovery points.

## FEATURES

### **Simplifies Backup and Recovery Functionality in Microsoft Exchange and Microsoft SQL Environments**

Leverages array based replication solutions to enable scores of snapshots to be kept online economically-allowing for extended or frequent Exchange/SQL database recovery points.

Integration with Microsoft VSS provides a standardized interface for creating snapshots; Recovery Manager's advanced scheduler feature provides automated snapshot creation to control administration costs.

Snapshot instances are managed efficiently, from an easy-to-use graphical user interface on the host that helps control costs.

Can be used to make a variety of scenarios simpler and more efficient, including creating snapshots for testing and development purposes.

Enables Exchange/SQL database to be quickly recovered to a known point in time or to the point of failure, speeding up a variety of operations including rapid recovery of the production Exchange/SQL server.

### **Enables Granular and Flexible Recovery Point Objectives and Recovery Time Objectives**

Eliminates the backup window and associated "race to daylight" by integrating with Microsoft VSS to power the creation of hundreds of non-disruptive, application-consistent snapshots for off-host backup.

Scalable, non-duplicative snapshots allow administrators a greater number of backups for a frequent extended history of recovery points, giving flexibility when committing to a given Recovery Point Objective (RPO).

Delivers the flexibility to restore from snapshot, independently roll forward the logs (via fast D2D restore) or to directly and instantaneously mount the snapshot on the host, which allows administrators to offer increasingly aggressive Recovery Time Objective (RTO) SLAs to customers.

Integration with backup products such as HPE Data Protector and Symantec NetBackup delivers fast, reliable backup to tape and recovery staging to disk from tape.

## Technical specifications

## HPE Recovery Manager Software

<b>Supported hardware environment</b>	HPE P2000 G3 MSA disk arrays
<b>Version</b>	v1.0
<b>Warranty</b>	Limited lifetime warranty



For additional technical information, available models and options, please reference [the QuickSpecs](#)

## HPE POINTNEXT SERVICES

[HPE Pointnext Services](#) brings together technology and expertise to help you drive your business forward and prepare for whatever is next.

### Operational Services from HPE Pointnext Services

[HPE Pointnext Tech Care](#) provides fast access to product-specific experts, an AI-driven digital experience, and general technical guidance to help enable constant innovation. We have reimagined IT support from the ground up to deliver faster answers and greater value. By continuously searching for better ways to do things—as opposed to just fixing things that break—HPE Pointnext Tech Care helps you focus on achieving your business goals.

[HPE Pointnext Complete Care](#) is a modular, edge-to-cloud IT environment service that provides a holistic approach to optimizing your entire IT environment, and achieving agreed upon IT outcomes and business goals through a personalized and customer-centric experience. All delivered by an assigned team of HPE Pointnext Services experts.

**HPE Integration and Performance Services** help you customize your experience at any stage of your product lifecycle with a menu of services based on individual needs, workloads, and technologies.

- Advise, design, and transform
- Deploy
- Integrate and migrate
- Operate and improve
- Financial Services
- Greenlake Management Services
- Retire and sanitize
- IT Training and personal development

### Other related services

[HPE Education Services](#) delivers a comprehensive range of services to support your people as they expand their skills required for a digital transformation. Consult your HPE Sales Representative or Authorized Channel Partner of choice for any additional questions and support options.

**Defective Media Retention** is optional and allows you to retain Disk or eligible SSD/Flash Drives replaced by HPE due to malfunction.

## HPE GREENLAKE

[HPE Greenlake](#) is HPE's market-leading IT as-a-Service offering that brings the cloud experience to apps and data everywhere – data centers, multi-clouds, and edges – with one unified operating model. HPE GreenLake delivers public cloud services and infrastructure for workloads on premises, fully managed in a pay per use model.

If you are looking for more services, like **IT financing solutions**, please [explore them here](#).

**Make the right purchase decision.**  
Contact our presales specialists.

[Download](#)



**Share now**



**Get updates**

  
**Hewlett Packard  
Enterprise**

© Copyright 2022 Hewlett Packard Enterprise Development LP. The information contained herein is subject to change without notice. The only warranties for Hewlett Packard Enterprise products and services are set forth in the express warranty statements accompanying such products and services. Nothing herein should be construed as constituting an additional warranty. Hewlett Packard Enterprise shall not be liable for technical or editorial errors or omissions contained herein.

Parts and Materials: HPE will provide HPE-supported replacement parts and materials required to maintain the covered hardware.

Parts and components that have reached their maximum supported lifetime and/or the maximum usage limitations as set forth in the manufacturer's operating manual, product quick-specs, or the technical product data sheet will not be provided, repaired, or replaced as part of these services.

Image may differ from the actual product  
[PSN5262192WWEN](#), September, 2022.