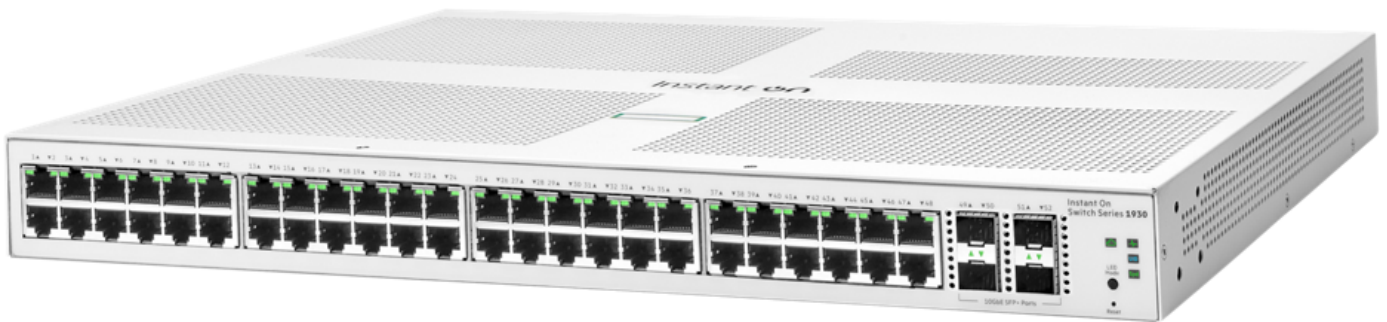


# HPE Networking Instant On Switch 1930

## HPE Networking Instant On Switch 48p Gigabit 4p SFP+ 1930 (JL685A)



### What's new

- Seven advanced smart managed Layer 2+ Gigabit switches for high-performance connectivity.
- Non-PoE and Class 4 PoE (i.e. PoE+) 8-, 24- and 48-port models for deployment flexibility.
- 1 G/10 G SFP+ ports on 24- and 48-port models for fiber connectivity.
- HPE Networking Instant On mobile app and/or cloud-based web portal for easy network management onsite or remotely.
- Option to manage your switches through local web GUI.

### Overview

The HPE Networking Instant On Switch 1930 series is designed for small and growing businesses that require enhanced performance to support bandwidth-demanding applications. The 1930 switch series seamlessly integrates with existing Instant On indoor/outdoor access points and can be centrally managed with the Instant On mobile app onsite or remotely.

These cloud-managed layer 2+ Ethernet switches consist of 8-, 24-, and 48-port Class 4 PoE (i.e. PoE+) and non-PoE Gigabit Ethernet models, with 1 G SFP slots on 8-port model and 1 G/10 G SFP+ slots on 24-/48 G models for fiber connectivity.

### Features

#### Simplify Network Deployment and Management for Small Organizations

The HPE Networking Instant On Switch 1930 series features easy-to-use, out-of-the-box, plug-and-play deployment.

The series offers a complete portfolio of choices for increased small business flexibility. It consists of seven models including 8 G-, 24 G-, and 48 G-ports with and without class 4 PoE (i.e. PoE+).

The 24- and 48- port models include four SFP/SFP+ transceiver slots that support Gigabit or 10-Gigabit speeds for fiber connectivity.

The HPE Networking Instant On Switch 1930 series can be deployed using two management modes – Instant On cloud-management (access via mobile app and/or web portal) and the local web GUI.

### **Keep Your Business Protected with Integrated Security Features**

The HPE Networking Instant On Switch 1930 series supports energy efficient Ethernet for lower power consumption and an enhanced feature set for more robust operation.

Enhanced security features such as IEEE 802.1x, and VLANs guard your network from unwanted or unauthorized access.

Automatic denial-of-service (DOS) monitors and protects the network against malicious attacks.

Management security restricts access to critical configuration commands, offers multiple privilege levels with password protection.

### **Deliver High Performance**

The HPE Networking Instant On Switch 1930 series delivers advanced functionalities including customizable like VLANs, link aggregation, Spanning Tree Protocols, and IEEE 802.1X access control.

8-, 24-, and 48-port configurations with a choice of non-PoE and Class 4 PoE models provides deployment flexibility that fits all small business environment. Class4 PoE options allow to power devices like IP phones, surveillance cameras and access points, without the cost of additional cabling.

The 24- and 48-port models include 1 G/10 G SFP+ ports for reliable fiber connectivity and other connections across longer distances.

<b>Technical specifications</b>	<b>HPE Networking Instant On Switch 48p Gigabit 4p SFP+ 1930</b>
---------------------------------	--

<b>Product Number</b>	JL685A
<b>Differentiator</b>	Ports: 48 Gigabit copper Uplink ports: 4 SFP+ 1/10 GbE ports
<b>Power consumption</b>	36.9W maximum, 16.8W idle
<b>Input voltage</b>	100 - 127 / 200 - 240 VAC
<b>Ports</b>	48 RJ-45 autosensing 10/100/1000 ports (IEEE 802.3 Type 10 BASE-T, IEEE 802.3u Type 100 BASE-TX, IEEE 802.3ab Type 1000 BASE-T);  Duplex: 10 BASE-T/100 BASE-TX: half or full; 1000 BASE-T: full only 4 SFP+ 1/10 GbE ports
<b>Switching capacity</b>	176 Gbps
<b>Throughput</b>	130.95 Mpps, maximum
<b>Memory and processor</b>	ARM Cortex-A9 @ 800 MHz 512 MB SDRAM, 256 MB flash 1.5 MB packet buffer
<b>Management features</b>	Instant On Portal, Web browser, SNMP Manager
<b>Operating temperature</b>	32°F to 104°F (0°C to 40°C)
<b>Weight</b>	3.13 kg
<b>Product dimensions</b>	4.39 x 44.25 x 28.24 cm
<b>Warranty</b>	Limited lifetime warranty with 24X7 phone support for the first 90 days and chat support for the entire warranty duration. Community support is available for the life of the product.

# HPE Services

No matter where you are in your transformation journey, you can count on HPE Services to deliver the expertise you need when, where and how you need it. From strategy and planning to deployment, ongoing operations and beyond, our experts can help you realize your digital ambitions.

## Advisory & Professional services

Experts can help you map out your path to hybrid cloud and optimize your operations.

## Managed services

HPE runs your IT operations, giving you unified control, so can focus on innovation.

## Support services

Optimize your entire IT environment and drive innovation. Manage day-to-day IT operational tasks while freeing up valuable time and resources.

- **HPE Complete Care Service:** a modular service designed to help optimize your entire IT environment and achieve agreed upon IT outcomes and business goals. All delivered by an assigned team of HPE experts.
- **HPE Tech Care Service:** the operational service experience for HPE products. The service provides access to product specific experts, an AI driven digital experience, and general technical guidance to help reduce risk and search for ways to do things better.
- **HPE Multivendor Services:** Single point of accountability for managing on-site hardware and software support for multivendor products. HPE experts help manage your IT across technologies and platforms for HPE and non-HPE technologies, acting as the single point of contact for your IT operational needs.

## Lifecycle Services

Address your specific IT deployment project needs with tailored project management and deployment services.

## HPE Education Services

Training and certification designed for IT and business professionals across all industries. Create learning paths to expand proficiency in a specific subject. Schedule training in a way that works best for your business with flexible continuous learning options

**Defective Media Retention** is optional and allows you to retain Disk or eligible SSD/Flash Drives replaced by HPE due to malfunction.

## **HPE GreenLake**

[HPE GreenLake edge-to-cloud platform](#) is HPE's market-leading as-a-Service offering that brings the cloud experience to apps and data everywhere – data centers, multi-clouds, and edges – with one unified operating model, on premises, fully managed in a pay per use model.

If you are looking for more services, like **IT financing solutions**, please [explore them here](#).

[For additional technical information, available models and options, please reference the QuickSpecs](#)

Visit [HPE.com](https://www.hpe.com)

[Chat now](#)

© Copyright 2026 Hewlett Packard Enterprise Development LP. The information contained herein is subject to change without notice. The only warranties for Hewlett Packard Enterprise products and services are set forth in the express warranty statements accompanying such products and services. Nothing herein should be construed as constituting an additional warranty. Hewlett Packard Enterprise shall not be liable for technical or editorial errors or omissions contained herein.

Parts and Materials: HPE will provide HPE-supported replacement parts and materials required to maintain the covered hardware.

Parts and components that have reached their maximum supported lifetime and/or the maximum usage limitations as set forth in the manufacturer's operating manual, product quick-specs, or the technical product data sheet will not be provided, repaired, or replaced as part of these services.

Image may differ from the actual product.

[PSN1012839572WWEN](#), March 05, 2026.

HEWLETT PACKARD ENTERPRISE

[hpe.com](https://www.hpe.com)

