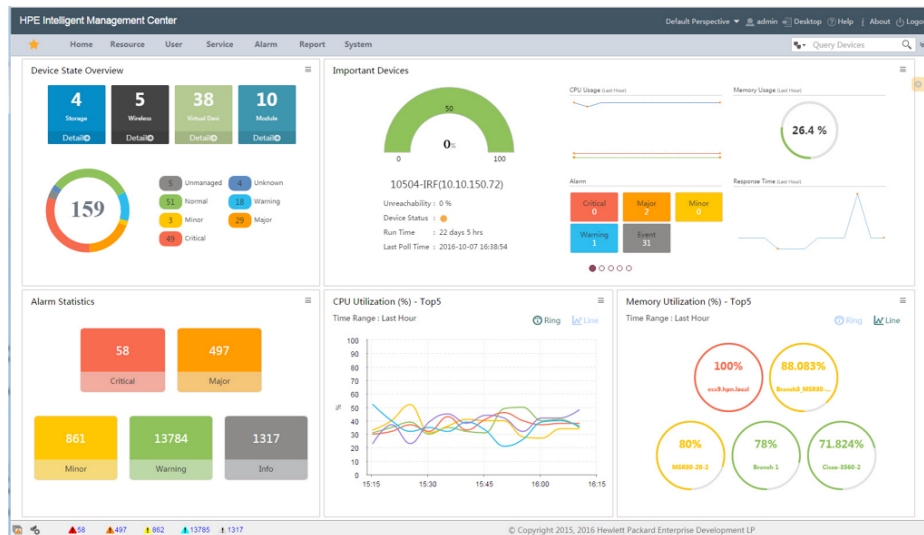


# HPE IMC Service Operation Management Software

HPE Networking IMC Service Operation Management Software Module  
License E-LTU (JG139AAE)



## What's new

- Real-time, accurate configuration database.
- Integration with alarming and configuration center.
- Centralized knowledge base for self-resolution of network issues.
- Complete service operation flow management.

## Overview

The HPE IMC Service Operation Manager (SOM) Software platform is an Intelligent Management Center (IMC) module that focuses on operations and management flow to provide full IT lifecycle management adhering to ITIL v3.0 including services like policy design, operation, and configuration improvement.

The IMC SOM Software provides controls, measures, and audit capabilities for configuration changes, fault identification, and recovery, reducing IT manual involvement and cost by allowing end users to recognize known network issues and track service requests.

## Features

### Lifecycle Management of IT Network Operations

The HPE IMC Service Operation Manager (SOM) Software provides lifecycle management of IT network operations from ticket creation to status checks to execution and resolution.

End users can manage and recognize their own network issues and track service requests, reducing overall IT involvement.

Configuration management allows for the automated and manual setting of control mechanisms and audit configuration changes.

Integration with alarming reduces maintenance by enabling problem recognition, improving network efficiency, stability, and quality.

### Customization of Networking Experience

The HPE IMC Service Operation Manager (SOM) Software tailors flow management to operations management based on predefined templates appropriate for an organization.

Leverage a centralized knowledgebase for issue resolution and problem identification.

Easily interfaces between end users and administrators to reduce IT time in both operations and management.

## Technical specifications

## HPE Networking IMC Service Operation Management Software Module License E-LTU

<b>Product Number</b>	JG139AAE
<b>Differentiator</b>	HPE IMC Service Operation Manager (SOM) E-LTU provides full lifecycle support for IT operations and management (O&M). SOM focuses on the O&M flow to control, measure, and audit network changes, fault identification, and recovery.
<b>Platform required</b>	HPE Intelligent Management Center Enterprise Software HPE Intelligent Management Center Standard Software
<b>Technical notes</b>	For fewer than 500 nodes, 1 CPU is enough From 500 to 2,000 nodes, there should be 2 CPUs or 1 dual-core CPU For more than 2,000 nodes, there should be 4 CPUs or 2 dual-core CPUs For more than 5,000 nodes, a hierarchy architecture should be used.



[For additional technical information, available models and options, please reference the QuickSpecs](#)

### HPE Services

No matter where you are in your transformation journey, you can count on HPE Services to deliver the expertise you need when, where and how you need it. From strategy and planning to deployment, ongoing operations and beyond, our experts can help you realize your digital ambitions.

#### Consulting services

Experts can help you map out your path to hybrid cloud and optimize your operations.

#### Managed services

HPE runs your IT operations, giving you unified control, so can focus on innovation.

#### Operational services

Optimize your entire IT environment and drive innovation. Manage day-to-day IT operational tasks while freeing up valuable time and resources.

- HPE Complete Care Service: a modular service designed to help optimize your entire IT environment and achieve agreed upon IT outcomes and business goals. All delivered by an assigned team of HPE experts.
- HPE Tech Care Service: the operational service experience for HPE products. The service provides access to product specific experts, an AI driven digital experience, and general technical guidance to help reduce risk and search for ways to do things better.

#### Lifecycle Services

Address your specific IT deployment project needs with tailored project management and deployment services.

#### HPE Education Services

Training and certification designed for IT and business professionals across all industries. Create learning paths to expand proficiency in a specific subject. Schedule training in a way that works best for your business with flexible continuous learning options.

The Defective Media Retention (DMR) service feature option applies only to Disk or eligible SSD/Flash Drives replaced by Hewlett Packard Enterprise due to malfunction. Comprehensive Defective Material Retention (CDMR) allows you to keep all data retentive components.


### HPE GreenLake


HPE GreenLake edge-to-cloud platform is HPE’s market-leading as-a-Service offering that brings the cloud experience to apps and data everywhere – data centers, multi-clouds, and edges – with one unified operating model, on premises, fully managed in a pay per use model.

If you are looking for more services, like **IT financing solutions**, please explore them [here](#).

Explore **HPE GreenLake**

**Make the right purchase decision.**  
Contact our presales specialists.

 **Chat now (sales)**

 **Call now**

 **Buy now**

 **Share now**

 **Get updates**



© Copyright 2024 Hewlett Packard Enterprise Development LP. The information contained herein is subject to change without notice. The only warranties for Hewlett Packard Enterprise products and services are set forth in the express warranty statements accompanying such products and services. Nothing herein should be construed as constituting an additional warranty. Hewlett Packard Enterprise shall not be liable for technical or editorial errors or omissions contained herein.

Parts and Materials: HPE will provide HPE-supported replacement parts and materials required to maintain the covered hardware.

Parts and components that have reached their maximum supported lifetime and/or the maximum usage limitations as set forth in the manufacturer's operating manual, product quick-specs, or the technical product data sheet will not be provided, repaired, or replaced as part of these services.

Image may differ from the actual product [PSN5061726SGEN](#), November, 2024.