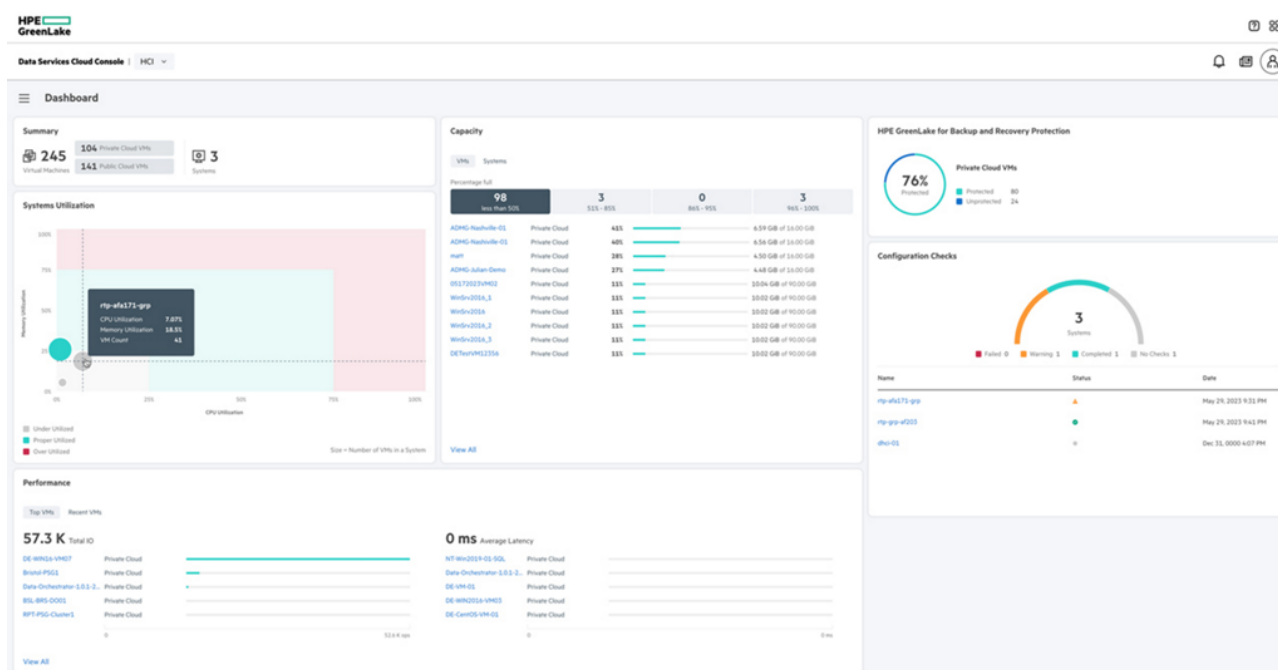


HPE Private Cloud Business Edition

HPE Morpheus VM Essentials Software for Private Cloud Business Edition 5-year E-LTU (S5Q87AAE)



Что нового?

- Introduction of HPE Morpheus VM Essentials Software. The cutting-edge virtualization technology now available with HPE Private Cloud Business Edition
- Support for HPE ProLiant Compute Gen12 servers. Secure, scalable, and high-performance computing for Private Cloud
- Updated Smart templates for HPE GreenLake for Private Cloud Business Edition with HPE ProLiant Gen11 servers.
- Manage VMs and infrastructure across your fleet and public cloud through a single

Обзор

HPE Private Cloud Business Edition provides an agile cloud operational experience and a simple cloud consumption model for private cloud infrastructure. With this offering, customers gain a self-managed private cloud offering with a unified interface to simplify VM to infrastructure management and allows you to build your self-service cloud where you need it.

In addition, HPE Private Cloud Business Edition can be delivered via Equinix, in a new route-to-market extension to our standard offering. It provides a deployment option that further simplifies the user experience by leveraging the benefits and value of a colocation environment.

console.

- AI-managed automation – deploy in a few clicks, with one-click upgrades.
- Flexible consumption of Compute (Server count or Memory) and Storage resources.

Функции

Choice of Virtualization (VMware® or HPE Morpheus VM Essentials Software)

Choose to use VMware® and/or HPE Morpheus VM Essentials Software virtualization.

Lower your TCO: Our new cost-efficient HPE Morpheus VM Essentials Software virtualization platform provides 4x to 25x better TCO.

Choose from different tiers for your performance and service requirements.

Reduce application latency by bringing data closer to the applications.

Choose from different tiers for your performance and service requirements.

Self Service Private Cloud

Low touch provisioning that enables fast and easy provisioning of all infrastructure, firmware and software components.

Full Stack lifecycle management with automated catalogue-based updates for the various hardware, software, and firmware components certified by HPE experts.

Enhanced configuration analysis to validate infrastructure with best practices across compute, storage and networking.

Industry-leading 100% data availability guarantee. [1] with HPE Alletra Storage MP B10000

Enhanced configuration analysis to check infrastructure with best practices across compute, storage and networking.

Accelerate Virtual Machine and Application Experience

Global unified dashboard of VMs and cluster views.

Easy private cloud VM provisioning within few clicks leveraging software catalog for preloaded images.

VM management allowing for edit, migrate, delete and power actions.

Provision and manage public cloud VMs within Private Cloud Business Edition cloud console.

Multi-cluster capability, create one or more host clusters within your Virtualization environment.

Harness Hybrid Cloud Data Protection and VM Mobility

Native data protection of VMs provided via integration with HPE GreenLake for Backup and Recovery.

100% data availability guarantee. [1] with HPE GreenLake for Block Storage built on HPE Alletra Storage Designed for 99.9999% data availability guarantee with Alletra 6000 [2]

Product Number	S5Q87AAE
Поддерживаемые платформы	HPE ProLiant Gen11 servers AMD-based HPE ProLiant DL325 HPE ProLiant DL365 HPE ProLiant DL385 Intel-based HPE ProLiant DL360 HPE ProLiant DL380 HPE Alletra Storage MP R3 HPE Storage Platforms
Способ предоставления услуги	Infrastructure-as-a-Service
Периодичность выставления счетов	Monthly
Условия предоставления поддержки	24x7

[1]100% data availability guarantee, with HPE Alletra Storage MP B10000.
https://www.hpe.com/psnow/doc/a00058506enw?jumpid=in_pdp-psnow-docs

HPE Services

No matter where you are in your transformation journey, you can count on HPE Services to deliver the expertise you need when, where and how you need it. From strategy and planning to deployment, ongoing operations and beyond, our experts can help you realize your digital ambitions.

Advisory & Professional services

Experts can help you map out your path to hybrid cloud and optimize your operations.

Managed services

HPE runs your IT operations, giving you unified control, so you can focus on innovation.

Support services

Optimize your entire IT environment and drive innovation. Manage day-to-day IT operational tasks while freeing up valuable time and resources.

- **HPE Complete Care Service:** a modular service designed to help optimize your entire IT environment and achieve agreed upon IT outcomes and business goals. All delivered by an assigned team of HPE experts.
- **HPE Tech Care Service:** the operational service experience for HPE products. The service provides access to product specific experts, an AI driven digital experience, and general technical guidance to help reduce risk and search for ways to do things better.
- **HPE Multivendor Services:** Single point of accountability for managing on-site hardware and software support for multivendor products. HPE experts help manage your IT across technologies and platforms for HPE and non-HPE technologies, acting as the single point of contact for your IT operational needs.

Lifecycle Services

Address your specific IT deployment project needs with tailored project management and deployment services.

HPE Education Services

Training and certification designed for IT and business professionals across all industries. Create learning paths to expand proficiency in a specific subject. Schedule training in a way that works best for your business with flexible continuous learning options

Defective Media Retention is optional and allows you to retain Disk or eligible SSD/Flash Drives replaced by HPE due to malfunction.

GreenLake

GreenLake is the cloud to run and manage your entire hybrid landscape—private, public, and edge. It helps you to:

- Streamline IT Operations across compute, storage, and networking without the chaos
- Unify and secure data, as you move faster
- Accelerate AI, from pilot to production

The result: greater operational efficiency, lower TCO, and faster AI delivery—all from one unified, intelligent platform built for today's hybrid enterprise.

[Для получения дополнительной технической информации, доступных моделей и опций обратитесь к QuickSpecs](#)

Visit [HPE.com](https://www.hpe.com)

[Чат](#)

© Hewlett Packard Enterprise Development LP, 2026 г. Информация в настоящем документе может быть изменена без предварительного уведомления. Гарантийные обязательства для продуктов и услуг Hewlett Packard Enterprise приведены только в условиях явной гарантии, прилагаемой к каждому продукту и услуге. Никакие сведения в данном документе не могут рассматриваться как дополнительные гарантийные обязательства. Hewlett Packard Enterprise не несет ответственности за технические или редакторские ошибки и упущения в данном документе.

Компоненты и материалы: Компания HPE предоставит запасные части и материалы, поддерживаемые HPE, которые требуются для обслуживания оборудования по договору.

Данная услуга не подразумевает предоставление, ремонт или замену деталей и компонентов, которые достигли своего максимального срока службы и (или) лимита использования (согласно данным руководства по эксплуатации, кратким техническим руководствам или технической документации, предоставленной производителем).

AMD is a trademark of Advanced Micro Devices, Inc.
VMware is a trademark or registered trademark of VMware, LLC or its affiliates in the United States and other countries.
All third-party marks are property of their respective owners.

Изображение может отличаться от реального изделия.

[PSN1014875745UARU](#), июня, 2026.

HEWLETT PACKARD ENTERPRISE

[hpe.com](https://www.hpe.com)

