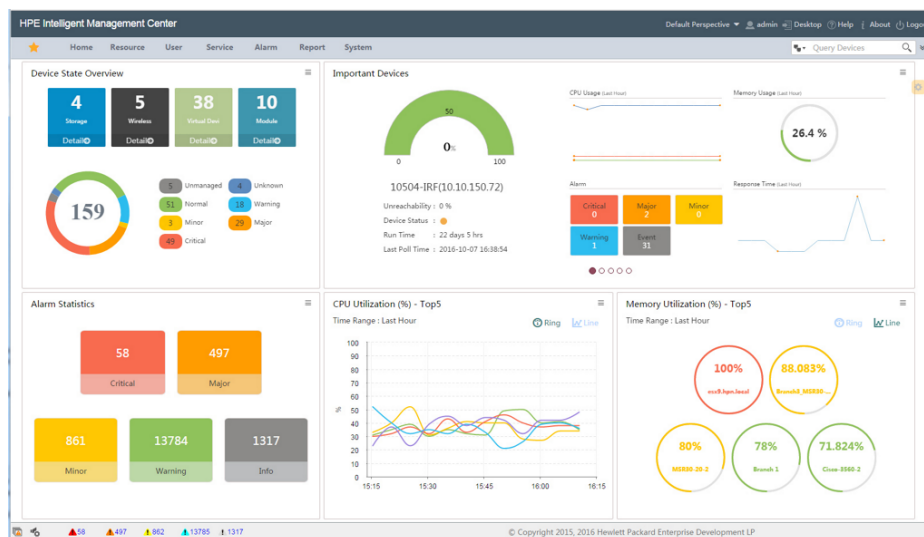


# HPE IMC Virtual Application Networking Fabric Manager Software



## What's new

- Detection of the source of sub second microbursts.
- Support for N Port Virtualization, Fibre Channel Ping, and Fibre Channel TraceRoute
- Offers VxLAN, the next generation VLAN overlay technology

## Overview

HPE Intelligent Management Center (IMC) Software, with the optional HPE IMC Virtual Application Networking Fabric Manager Software, includes added functionality called HPE FlexFabric Network Analytics. When HPE FlexFabric Network Analytics is combined with the HPE FlexFabric 5940 or 5950 Switch it delivers real time visibility of microburst network congestion which negatively impacts overall network operations and performance.

Microbursts last only for sub seconds making its detection difficult by today's network monitoring tools such as SNMP. HPE FlexFabric Network Analytics enables the network

operator to pinpoint these microburst congestion points and their sources. This gives the network operator granular visibility into these spontaneous congestion points. With this information operators will be able to analyze in more detail their network configuration and make the necessary adjustments as needed for optimal network performance.

## Features

### **HPE FlexFabric Network Analytics Provides Microburst Congestion Detection**

HPE IMC Virtual Application Networking Fabric Manager Software includes HPE FlexFabric Network Analytics which in conjunction with the HPE FlexFabric 5940 or 5950 Switch delivers real time visibility of microburst network congestion.

Network congestion caused by microbursts negatively impacts operations and performance. Microbursts last for sub seconds, so detection is difficult with monitoring tools such as SNMP. FlexFabric Network Analytics enables the network operator to pinpoint microburst congestion points and the sources.

### **Simplifies Network Management with a Unified View**

The HPE IMC Virtual Application Networking Fabric Manager Software is an optional module that simplifies the management of data center and Fibre Channel (FC) storage area network (SAN) fabrics.

Provides a unified view of all of the network and storage devices in the data center fabric.

Reduces manual provisioning and allows IT to easily configure Ethernet Virtual Interconnect (EVI) and short path bridging (SPB).

Automates, monitors and manages the entire network.

### **SAN Management**

The HPE IMC VAN Fabric Manager Software simplifies network configuration for FC SANs and FCoE storage devices with full VSAN management capabilities.

Visualize the FCoE SAN structure topology in Intelligent Management Center (IMC) Software Platform.

Deploy and configure DCB, DCBx, and VSAN from the IMC interface.

## Technical specifications

## HPE IMC Virtual Application Networking Fabric Manager Software

### Platform required

HPE Intelligent Management Center Enterprise Software  
HPE Intelligent Management Center Standard Software

### Technical notes

See the HPE IMC Standard or Enterprise Platform data sheet for the required software environment.



[For additional technical information, available models and options, please reference the QuickSpecs](#)

## HPE Services

No matter where you are in your transformation journey, you can count on HPE Services to deliver the expertise you need when, where and how you need it. From strategy and planning to deployment, ongoing operations and beyond, our experts can help you realize your digital ambitions.

### Consulting services

Experts can help you map out your path to hybrid cloud and optimize your operations.

### Managed services

HPE runs your IT operations, giving you unified control, so can focus on innovation.

### Operational services

Optimize your entire IT environment and drive innovation. Manage day-to-day IT operational tasks while freeing up valuable time and resources.

- HPE Complete Care Service: a modular service designed to help optimize your entire IT environment and achieve agreed upon IT outcomes and business goals. All delivered by an assigned team of HPE experts.
- HPE Tech Care Service: the operational service experience for HPE products. The service provides access to product specific experts, an AI driven digital experience, and general technical guidance to help reduce risk and search for ways to do things better.

### Lifecycle Services

Address your specific IT deployment project needs with tailored project management and deployment services.

### HPE Education Services

Training and certification designed for IT and business professionals across all industries. Create learning paths to expand proficiency in a specific subject. Schedule training in a way that works best for your business with flexible continuous learning options.

The [Defective Media Retention \(DMR\)](#) service feature option applies only to Disk or eligible SSD/Flash Drives replaced by Hewlett Packard Enterprise due to malfunction. [Comprehensive Defective Material Retention \(CDMR\)](#) allows you to keep all data retentive components.

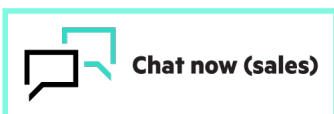
## HPE GreenLake

[HPE GreenLake edge-to-cloud platform](#) is HPE's market-leading as-a-Service offering that brings the cloud experience to apps and data everywhere – data centers, multi-clouds, and edges – with one unified operating model, on premises, fully managed in a pay per use model.

If you are looking for more services, like **IT financing solutions**, please explore them [here](#).

**Make the right purchase decision.**  
**Contact our presales specialists.**

[Find a partner](#)



Explore **HPE GreenLake**



**Share now**



**Get updates**

© Copyright 2024 Hewlett Packard Enterprise Development LP. The information contained herein is subject to change without notice. The only warranties for Hewlett Packard Enterprise products and services are set forth in the express warranty statements accompanying such products and services. Nothing herein should be construed as constituting an additional warranty. Hewlett Packard Enterprise shall not be liable for technical or editorial errors or omissions contained herein.

Parts and Materials: HPE will provide HPE-supported replacement parts and materials required to maintain the covered hardware.

Parts and components that have reached their maximum supported lifetime and/or the maximum usage limitations as set forth in the manufacturer's operating manual, product quick-specs, or the technical product data sheet will not be provided, repaired, or replaced as part of these services.

Image may differ from the actual product  
[PSN6604590WWEN](#), April, 2024.

**Hewlett Packard  
Enterprise**