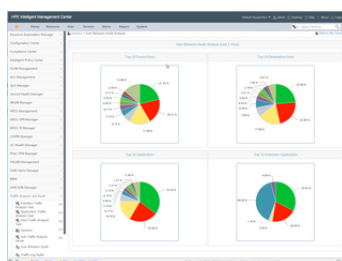




HPE IMC USER BEHAVIOR AUDITOR SOFTWARE MODULE WITH 50-USER E- LTU (JG760AAE)

Intelligent Management Software



WHAT'S NEW

- Provides user data that enhances network security.
- Comprehensive log collection from devices creates safer networks.
- Ability to export and audit log files to examine for threats.

OVERVIEW

The HPE IMC User Behavior Auditor (UBA) Software provides network administrators the ability to audit the behavior of internal users to solve security challenges. In conjunction with the HPE IMC Access Manager (UAM) Software, the IMC UBA Software is built to adapt to network environment changes.

Among the features especially helpful for network administrators are comprehensive log collections and audit functions which digest information from HTTP, FTP, and SMTP packets.

FEATURES

Greater Control Over Internal Threats Creates a More Robust Network

The HPE IMC User Behavior Auditor (UBA) Software audits internal devices and users to protect the network from security threats.

IMC UBA Software analyzes user actions to provide data such as websites visited,

applications used, bandwidth consumed on a per device basis.

Analyzes a variety of logs containing information on device vendor, OS, and type, forwarded by devices on the network to better detect device threats.

Handle Uncertainty with Powerful Filtering and Probe Strategies

The HPE IMC User Behavior Auditor (UBA) Software utilizes probes to analyze incompatible network data.

Overcome uncertainty by filtering log packets and matching them against set criteria to determine anomalies to check overall network security.

Technical specifications

HPE IMC User Behavior Auditor Software Module with 50-user E-LTU

Product Number	JG760AAE
Differentiator	HPE IMC User Behavior Software Module with 50-user E-LTU
Platform required	HPE Intelligent Management Center Enterprise Software HPE Intelligent Management Center Standard Software
Technical notes	See the HPE IMC Standard or Enterprise Platform data sheet for the required software environment.



For additional technical information, available models and options, please reference the [QuickSpecs](#)

HPE POINTNEXT SERVICES

[HPE Pointnext Services](#) brings together technology and expertise to help you drive your business forward and prepare for whatever is next.

Operational Services from HPE Pointnext Services

[HPE Pointnext Tech Care](#) provides fast access to product-specific experts, an AI-driven digital experience, and general technical guidance to help enable constant innovation. We have reimagined IT support from the ground up to deliver faster answers and greater value. By continuously searching for better ways to do things—as opposed to just fixing things that break—HPE Pointnext Tech Care helps you focus on achieving your business goals.

[HPE Pointnext Complete Care](#) is a modular, edge-to-cloud IT environment service that provides a holistic approach to optimizing your entire IT environment, and achieving agreed upon IT outcomes and business goals through a personalized and customer-centric experience. All delivered by an assigned team of HPE Pointnext Services experts.

HPE Integration and Performance Services help you customize your experience at any stage of your product lifecycle with a menu of services based on individual needs, workloads, and technologies.

- Advise, design, and transform
- Deploy
- Integrate and migrate
- Operate and improve
- Financial Services
- Greenlake Management Services
- Retire and sanitize
- IT Training and personal development

Other related services

[HPE Education Services](#) delivers a comprehensive range of services to support your people as they expand their skills required for a digital transformation. Consult your HPE Sales Representative or Authorized Channel Partner of choice for any additional questions and support options.

Defective Media Retention is optional and allows you to retain Disk or eligible SSD/Flash Drives replaced by HPE due to malfunction.

HPE GREENLAKE

[HPE Greenlake](#) is HPE's market-leading IT as-a-Service offering that brings the cloud experience to apps and data everywhere – data centers, multi-clouds, and edges – with one unified operating model. HPE GreenLake delivers public cloud services and infrastructure for workloads on premises, fully managed in a pay per use model.

If you are looking for more services, like **IT financing solutions**, please [explore them here](#).

Make the right purchase decision.
Contact our presales specialists.



Chat now (sales)



Call now



Buy now



Share now



Get updates



**Hewlett Packard
Enterprise**

© Copyright 2022 Hewlett Packard Enterprise Development LP. The information contained herein is subject to change without notice. The only warranties for Hewlett Packard Enterprise products and services are set forth in the express warranty statements accompanying such products and services. Nothing herein should be construed as constituting an additional warranty. Hewlett Packard Enterprise shall not be liable for technical or editorial errors or omissions contained herein.

Parts and Materials: HPE will provide HPE-supported replacement parts and materials required to maintain the covered hardware.

Parts and components that have reached their maximum supported lifetime and/or the maximum usage limitations as set forth in the manufacturer's operating manual, product quick-specs, or the technical product data sheet will not be provided, repaired, or replaced as part of these services.

Image may differ from the actual product
[PSN5443914AUEN](#), July, 2022.