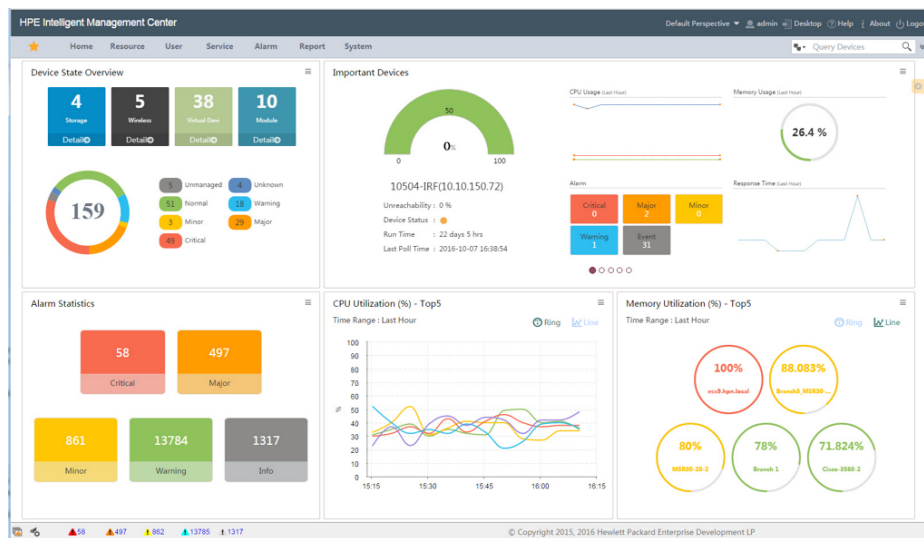


# HPE IMC Intelligent Analysis Reporter Software



## What's new

- Collect in-depth data about network usage and users.
- Includes reporting design tools and templates.
- Automate report distribution to key stakeholders
- Export reports into a variety of formats.

## Overview

HPE IMC Intelligent Analysis Reporter (IAR) Software extends the reporting capabilities within HPE Intelligent Management Center (IMC) to include customized reporting. These reporting capabilities enable network administrators to perform proper analysis of activities on the network such as network usage and topologies.

IMC IAR Software makes customization easy by including a report designer, which can save designs into templates making reporting easy and consistent. IMC IAR Software automates the process by generating reports when you need them and distributes them to key stakeholders.

## Features

### Delivers Reporting Design Tools That Are Flexible and Easy To Use

HPE IMC Intelligent Analysis Reporter (IAR) Software presents a visual design environment which allows administrators to create reports and report templates with ease.

With the available reporting wizards, you can easily link right to the data you want to analyze.

Supports a variety of report export formats including Excel, PDF, XML, CSV, and TXT.

### Automates the Reporting Process with Scheduling and Distribution

HPE IMC Intelligent Analysis Reporter (IAR) Software makes report management easy with automatically scheduled reporting.

Administrative work is minimized with the IMC IAR Software report distribution function which automates report distribution to specific stakeholders via email.

## Technical specifications

## HPE IMC Intelligent Analysis Reporter Software

### Browser supported

Microsoft Internet Explorer 6.0 or later  
Firefox 3.0

### Software (required)

Operating system: Red Hat Enterprise Linux Server 5  
database: Microsoft SQL Server 2005 Service Pack 3 (Windows only), Microsoft SQL Server 2008 Service Pack 1 (Windows only), Microsoft SQL Server 2008, Service Pack 1 (64 bit) (Windows 64 bit only), or Oracle 11g Enterprise version.

### Minimum system requirements

Server: 2.0 GHz Intel® Pentium® 4 or equivalent, 1 GB RAM memory, 20 GB storage, 10/100 MB NIC

### System requirements, recommended

Server: 3.0 GHz Intel® Pentium® 4 or equivalent  
2 GB RAM  
100 GB  
1000 MB



For additional technical information, available models and options, please reference the [QuickSpecs](#)

## HPE Services

No matter where you are in your transformation journey, you can count on HPE Services to deliver the expertise you need when, where and how you need it. From strategy and planning to deployment, ongoing operations and beyond, our experts can help you realize your digital ambitions.

### Consulting services

Experts can help you map out your path to hybrid cloud and optimize your operations.

### Managed services

HPE runs your IT operations, giving you unified control, so can focus on innovation.

### Operational services

Optimize your entire IT environment and drive innovation. Manage day-to-day IT operational tasks while freeing up valuable time and resources.

- HPE Complete Care Service: a modular service designed to help optimize your entire IT environment and achieve agreed upon IT outcomes and business goals. All delivered by an assigned team of HPE experts.
- HPE Tech Care Service: the operational service experience for HPE products. The service provides access to product specific experts, an AI driven digital experience, and general technical guidance to help reduce risk and search for ways to do things better.

### Lifecycle Services

Address your specific IT deployment project needs with tailored project management and deployment services.

### HPE Education Services

Training and certification designed for IT and business professionals across all industries. Create learning paths to expand proficiency in a specific subject. Schedule training in a way that works best for your business with flexible continuous learning options.

The [Defective Media Retention \(DMR\)](#) service feature option applies only to Disk or eligible SSD/Flash Drives replaced by Hewlett Packard Enterprise due to malfunction. [Comprehensive Defective Material Retention \(CDMR\)](#) allows you to keep all data retentive components.

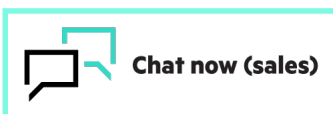
## HPE GreenLake

[HPE GreenLake edge-to-cloud platform](#) is HPE's market-leading as-a-Service offering that brings the cloud experience to apps and data everywhere – data centers, multi-clouds, and edges – with one unified operating model, on premises, fully managed in a pay per use model.

If you are looking for more services, like **IT financing solutions**, please explore them [here](#).

**Make the right purchase decision.**  
**Contact our presales specialists.**

[Find a partner](#)



Explore **HPE GreenLake**



**Share now**



**Get updates**

© Copyright 2024 Hewlett Packard Enterprise Development LP. The information contained herein is subject to change without notice. The only warranties for Hewlett Packard Enterprise products and services are set forth in the express warranty statements accompanying such products and services. Nothing herein should be construed as constituting an additional warranty. Hewlett Packard Enterprise shall not be liable for technical or editorial errors or omissions contained herein.

Parts and Materials: HPE will provide HPE-supported replacement parts and materials required to maintain the covered hardware.

Parts and components that have reached their maximum supported lifetime and/or the maximum usage limitations as set forth in the manufacturer's operating manual, product quick-specs, or the technical product data sheet will not be provided, repaired, or replaced as part of these services.

Image may differ from the actual product  
[PSN5061717WWEN](#), April, 2024.

**Hewlett Packard  
Enterprise**