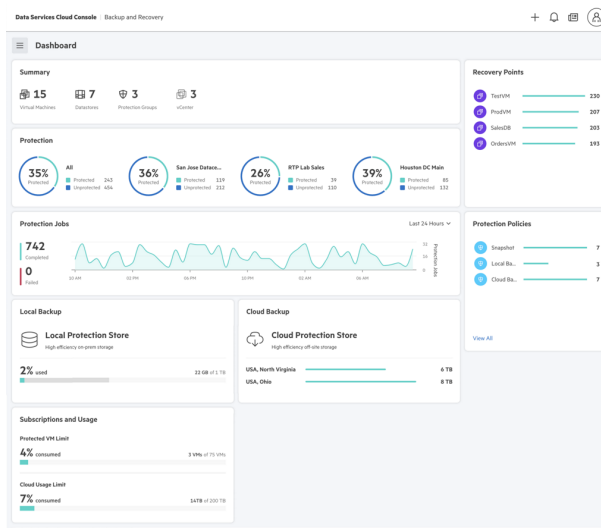


# HPE GreenLake for Backup and Recovery



## What's new

- Upfront, monthly in-arrears and pay-as-you-go (PAYG) payment options.
- Application integrated protection for Microsoft SQL server databases and Amazon RDS databases.
- Protection for storage volumes to enable protection of any commercial or custom application.
- On-premises backup to a service-defined Protection Store or a HPE StoreOnce appliance.
- Protection Policies can include on-premises snapshots, on-premises backups, cloud

## Overview

Are you looking for a way to automate protection of your hybrid cloud workloads so you can be sure that in the event of an outage, malicious activity, or cyber-attack, your data can be efficiently recovered? HPE GreenLake for Backup and Recovery, one of the SaaS offerings delivered via the HPE GreenLake Cloud Portal, provides this automated protection.

Global Protection Policies deliver automated protection based on your organization's requirements, so you can be confident that your recovery SLA's are met.

You will also appreciate the unmatched operational and storage efficiency of HPE GreenLake for Backup and Recovery, meaning your backups require less time to complete and

---

backups, on-premises backup copies (replicas) and on-premises to cloud backup copies (replicas).

- File and folder recovery with search to quickly locate a single item for recovery.

require you to pay for less storage.

## Features

### Easy to Setup, Operate and Scale

Protect your on-premises and cloud data with a unified cloud operational experience, so you spend less time managing data protection and more time delivering business outcomes.

Automate protection using flexible Protection Policies that define the recovery points and backup retention you need to deliver data protection for your organization.

Data protection delivered as a service means you do not have to plan or carry out any software patches or updates, the service is automatically updated without any downtime.

Integrated management of cloud and local backup targets removes the hassle of maintaining compatibility between secondary storage and backup software.

Configure some or all of your backups to be immutable to prevent deletion or change during their retention time in order to survive malware attacks and unintended or malicious deletion.

### Reduce Space Needed to Store Backup Data and Efficiently Use Internet Bandwidth

HPE StoreOnce Catalyst deduplication technology delivers up to 8x better backup space saving compared to other solutions. As a result of the unmatched space savings, the service uses the lowest capacity of storage costs for on-premises and cloud backups.

For on-premises protection, array-optimized protection is highly bandwidth efficient and enables fast, incremental backups for VMware virtual machines and MS SQL Server databases using HPE GreenLake managed storage. VMware CBT backup is used for protection of data on any vendor's storage.

Array-integrated protection of storage volumes allows any commercial or custom application data to be protected with the same high backup storage utilization efficiency.

For cloud native AWS protection, HPE GreenLake for Backup and Recovery gives you two tiers of protection with native AWS snapshots and cloud backups.

Hybrid protection with on-premises recovery points for near-instant recovery and fast recovery as well as cost-effective recovery cloud points for long term backup retention.

### Unified Protection Across Your Data Assets

The Data Services Cloud Console application hosted on the HPE GreenLake Cloud Portal delivers services for a unified experience for data and infrastructure management.

HPE GreenLake for Backup and Recovery provides a single interface for managing data protection schedules and the data protection storage removing the need to switch between backup software and storage device consoles.

Integrated into HPE Private Cloud Business Edition (HPE PCBE) to enable protection of PCBE managed virtual machines without leaving the PCBE service.

Manage the protection of on-premises assets and cloud assets through a single cloud management console.

Automate protection using Protection Policies that define snapshots, backup and backup copies (replicas) as well as backup destination(s), retention and immutability for consistent protection in line with your organization's data protection requirements.



## Technical specifications

## HPE GreenLake for Backup and Recovery

<b>Product type</b>	SaaS
<b>Tier</b>	Single tier service
<b>Duration (term)</b>	<p>Backup and Recovery can be ordered with a fixed monthly commitment subscription for 1, 2, 3, 4 or 5-year terms or with a Pay-As-You-Go (PAYG) subscription without any term commitment;</p> <p>Fixed monthly subscriptions can be billed upfront or monthly in arrears. Overage billing for consumption in excess of the fixed monthly commitment is billed monthly in arrears.;</p> <p>A PAYG subscription will continue until a request to terminate is received. Usage with a PAYG subscription is billed monthly in arrears.</p>
<b>Service method</b>	SaaS
<b>Support coverage</b>	24x7
<b>Pre-requisites</b>	<p>A HPE GreenLake Cloud Portal account is required to use HPE GreenLake for Backup and Recovery. Start creating an account for HPE GreenLake.</p> <p>The Data Services Cloud Console application must be deployed in the HPE GreenLake account to access HPE GreenLake for Backup and Recovery.</p> <p>To use snapshot protection, array-optimized backup and volume protection, HPE GreenLake managed storage systems are required.</p> <p>Refer to the Backup and Recovery QuickSpecs to see the supported storage systems.</p>
<b>Platform supported</b>	No platform dependencies
<b>Evaluation</b>	<a href="https://connect.hpe.com/HPE_Backup_and_Recovery_Trial">https://connect.hpe.com/HPE_Backup_and_Recovery_Trial</a>
<b>Billing frequency</b>	Monthly;Upfront



For additional technical information, available models and options, please reference the [QuickSpecs](#)

## HPE Services

No matter where you are in your transformation journey, you can count on HPE Services to deliver the expertise you need when, where and how you need it. From strategy and planning to deployment, ongoing operations and beyond, our experts can help you realize your digital ambitions.

### Consulting services

Experts can help you map out your path to hybrid cloud and optimize your operations.

### Managed services

HPE runs your IT operations, giving you unified control, so can focus on innovation.

### Operational services

Optimize your entire IT environment and drive innovation. Manage day-to-day IT operational tasks while freeing up valuable time and resources.

- HPE Complete Care Service: a modular service designed to help optimize your entire IT environment and achieve agreed upon IT outcomes and business goals. All delivered by an assigned team of HPE experts.
- HPE Tech Care Service: the operational service experience for HPE products. The service provides access to product specific experts, an AI driven digital experience, and general technical guidance to help reduce risk and search for ways to do things better.

### Lifecycle Services

Address your specific IT deployment project needs with tailored project management and deployment services.

### HPE Education Services

Training and certification designed for IT and business professionals across all industries. Create learning paths to expand proficiency in a specific subject. Schedule training in a way that works best for your business with flexible continuous learning options.

The [Defective Media Retention \(DMR\)](#) service feature option applies only to Disk or eligible SSD/Flash Drives replaced by Hewlett Packard Enterprise due to malfunction. [Comprehensive Defective Material Retention \(CDMR\)](#) allows you to keep all data retentive components.

## HPE GreenLake

[HPE GreenLake edge-to-cloud platform](#) is HPE's market-leading as-a-Service offering that brings the cloud experience to apps and data everywhere – data centers, multi-clouds, and edges – with one unified operating model, on premises, fully managed in a pay per use model.

If you are looking for more services, like **IT financing solutions**, please explore them [here](#).

Explore **HPE GreenLake**

Make the right purchase decision.  
Contact our presales specialists.



Share now



Get updates

© Copyright 2024 Hewlett Packard Enterprise Development LP. The information contained herein is subject to change without notice. The only warranties for Hewlett Packard Enterprise products and services are set forth in the express warranty statements accompanying such products and services. Nothing herein should be construed as constituting an additional warranty. Hewlett Packard Enterprise shall not be liable for technical or editorial errors or omissions contained herein.

Parts and Materials: HPE will provide HPE-supported replacement parts and materials required to maintain the covered hardware.

Parts and components that have reached their maximum supported lifetime and/or the maximum usage limitations as set forth in the manufacturer's operating manual, product quick-specs, or the technical product data sheet will not be provided, repaired, or replaced as part of these services.

Image may differ from the actual product  
[PSN1014420488WWEN](#), February, 2024.

  
**Hewlett Packard  
Enterprise**