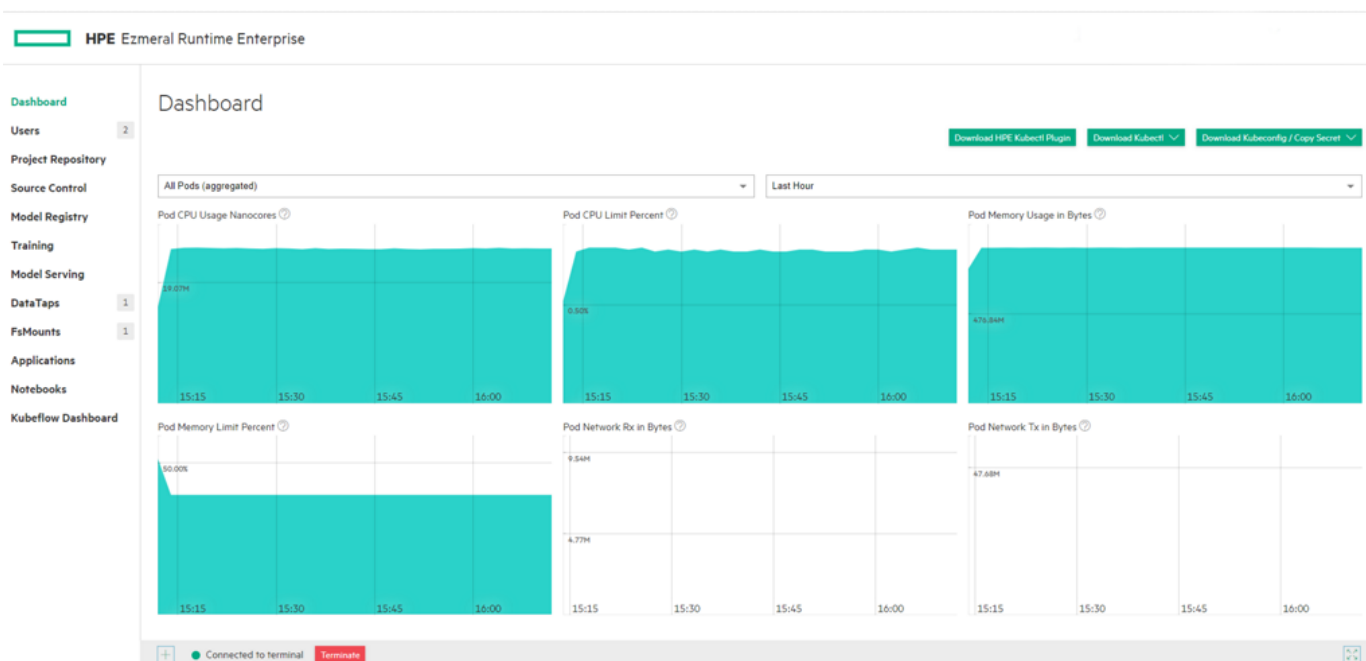


HPE Ezmeral Runtime Enterprise

HPE Ezmeral Runtime Enterprise 4-year 24x7 E-LTU (SOM16AAE)



What's new

- Decoupling of platform and Kubernetes-related components.
- Support for SLES 15 SP3 OS, K8s 1.21, 1.22, 1.23, external HPE Ezmeral Data Fabric on Bare Metal 7.0, and flexibility around data fabric registration.
- Support for Apache Spark 3.2, 3.3, and GPU acceleration for Spark workloads.
- Enhanced machine learning (ML) user experience and secured model management in a multi-tenant

Overview

HPE Ezmeral Runtime Enterprise is an enterprise-grade container orchestration platform that is designed for the containerization of both cloud-native and non-cloud-native monolithic applications with persistent data. It deploys 100% open-source Kubernetes for orchestration, provides a state-of-the-art file system and data fabric for persistent container storage, and provides enterprises with the ability to deploy AI and Analytics workloads in containers. Enterprises can now easily extend the agility and efficiency benefits of containers to more of their enterprise applications—running on either bare-metal or virtualized infrastructure, on-premises, in multiple clouds, or at the edge.

environment.

Features

Decoupling of Platform and the Kubernetes-related Components

HPE Ezmeral Runtime Enterprise will decouple the upgrade of platform and K8s-related components, reduce downtime, and give the administrator an ability to upgrade K8s-related components without performing a complete platform upgrade.

The Kubernetes-related components will be delivered in Kubernetes Bundles, which will package the software to support newer Kubernetes versions and updated add-ons. See [Kubernetes Bundle](#) for more details.

No changes were made to the upgrade procedure of an existing Kubernetes cluster and if the Kubernetes version update requires changes in the HPE Ezmeral Runtime Enterprise platform, the administrator can perform the complete HPE Ezmeral Runtime Enterprise upgrade.

Support for SLES 15 SP3, Newer K8s Versions, and External HPE Ezmeral Data Fabric on Bare Metal 7.0

The HPE Ezmeral Runtime Enterprise 5.5.0 release adds support for SLES 15 SP3 OS, K8s versions 1.21.14-hpe1, 1.22.12-hpe1, 1.23.9-hpe1, and open-source components such as Istio® (1.13.5). The K8s versions are based on the HPE with K8s distro, hence the “-hpe1” suffix.

It also adds support for external Ezmeral Data Fabric on Bare Metal 7.0 and flexibility around data fabric registration by allowing multiple Ezmeral Runtime Enterprise instances to register with the same external HPE Ezmeral Data Fabric on Bare Metal cluster as tenant storage.

Support for Apache Spark 3.2, 3.3 and GPU Acceleration for Spark Workloads

HPE Ezmeral Runtime Enterprise includes HPE Ezmeral Spark version 3.2 compatible with HPE Ezmeral Data Fabric 7.0, along with user authentication and governed data access to the data fabric. In addition, the Spark Operator has been enhanced to support open-source Apache Spark versions 2.x and 3.x.

Spark workloads can use GPU acceleration through built-in support for the NVIDIA® RAPIDS plugin.

Enhanced ML User Experience and Secured Model Management in a Multi-tenant Environment

Improves data scientist productivity to both build and operationalize ML models quickly.

Streamline access to data sources, notebooks, experiment tracking and model registry from a single, intuitive UI.

Built-in support to use MLflow integrated with Kubeflow for experiment tracking and model management.

Shared MLflow model registry and experiment tracker across tenants; end users are authenticated and provided controlled access to model and model metadata.

Includes support for Kubeflow 1.6

HPE Services

No matter where you are in your transformation journey, you can count on HPE Services to deliver the expertise you need when, where and how you need it. From strategy and planning to deployment, ongoing operations and beyond, our experts can help you realize your digital ambitions.

Advisory & Professional services

Experts can help you map out your path to hybrid cloud and optimize your operations.

Managed services

HPE runs your IT operations, giving you unified control, so can focus on innovation.

Support services

Optimize your entire IT environment and drive innovation. Manage day-to-day IT operational tasks while freeing up valuable time and resources.

- **HPE Complete Care Service:** a modular service designed to help optimize your entire IT environment and achieve agreed upon IT outcomes and business goals. All delivered by an assigned team of HPE experts.
- **HPE Tech Care Service:** the operational service experience for HPE products. The service provides access to product specific experts, an AI driven digital experience, and general technical guidance to help reduce risk and search for ways to do things better.
- **HPE Multivendor Services:** Single point of accountability for managing on-site hardware and software support for multivendor products. HPE experts help manage your IT across technologies and platforms for HPE and non-HPE technologies, acting as the single point of contact for your IT operational needs.

Lifecycle Services

Address your specific IT deployment project needs with tailored project management and deployment services.

HPE Education Services

Training and certification designed for IT and business professionals across all industries. Create learning paths to expand proficiency in a specific subject. Schedule training in a way that works best for your business with flexible continuous learning options

Defective Media Retention is optional and allows you to retain Disk or eligible SSD/Flash Drives replaced by HPE due to malfunction.

HPE GreenLake

[HPE GreenLake edge-to-cloud platform](#) is HPE's market-leading as-a-Service offering that brings the cloud experience to apps and data everywhere – data centers, multi-clouds, and edges – with one unified operating model, on premises, fully managed in a pay per use model.

If you are looking for more services, like **IT financing solutions**, please [explore them here](#).

[For additional technical information, available models and options, please reference the QuickSpecs](#)

Visit [HPE.com](https://www.hpe.com)

[Chat now](#)

© Copyright 2026 Hewlett Packard Enterprise Development LP. The information contained herein is subject to change without notice. The only warranties for Hewlett Packard Enterprise products and services are set forth in the express warranty statements accompanying such products and services. Nothing herein should be construed as constituting an additional warranty. Hewlett Packard Enterprise shall not be liable for technical or editorial errors or omissions contained herein.

Parts and Materials: HPE will provide HPE-supported replacement parts and materials required to maintain the covered hardware.

Parts and components that have reached their maximum supported lifetime and/or the maximum usage limitations as set forth in the manufacturer's operating manual, product quick-specs, or the technical product data sheet will not be provided, repaired, or replaced as part of these services.

Istio is a registered trademark of Google LLC. NVIDIA is a trademark and/or registered trademark of NVIDIA Corporation in the U.S. and other countries. All third-party marks are property of their respective owners.

Image may differ from the actual product.

[PSN1014675354IDEN](#), March, 2026.

HEWLETT PACKARD ENTERPRISE

[hpe.com](https://www.hpe.com)

