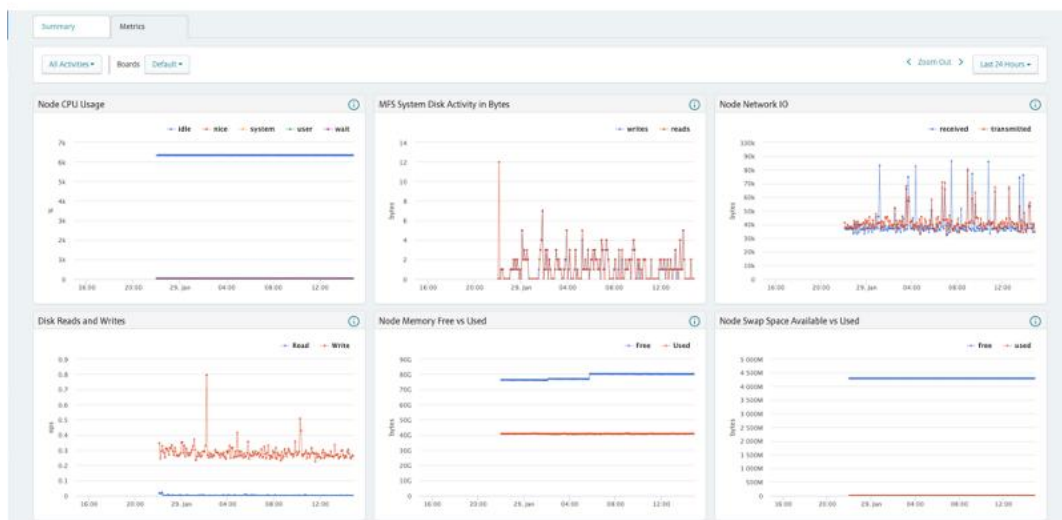


# HPE Ezmeral Data Fabric Software



## What's new

- A hybrid data plane and global namespace deliver at-a-glance visibility and direct access to files, objects, tables, and streams.
- Point-and-click menus create volumes, buckets, and topics while background processes set-up and configure components to data fabric(s) and global namespace.
- Consistent application of security, access controls, management, and sovereignty across hybrid environments reduces risk.
- Fully managed SaaS-based solution reduces software licensing and

## Overview

Is your data distributed across multiple locations and sources? Does the distributed nature of your data impact your ability to make data-driven decisions? A lack of access to unified data is one to the top three hurdles slowing down hybrid analytics and AI initiatives. HPE Ezmeral Data Fabric Software solves this challenge by federating multiple data sources and formats into a consistent data plane then making it easy for authorized users and workloads to access, analyze, and govern data from any location.

---

infrastructure costs.

## Features

### Hybrid Data Plane

Federated data layer and unified control of hybrid multicloud environments.

Accelerates insights by combining files, objects, tables, and streaming data into a single source free of duplicates.

Abstracts data from the storage protocol enabling big data estates, cloud-based lakes and warehouses, Apache Spark, streaming and table-based data to be seamlessly available from a single user interface.

Reduces software licensing, support, and infrastructure costs.

Automatic load balancing enables multiple applications to access common datasets without congestion and hotspots.

### Seamless Data Access

Native global namespace provides a consistent access point that allows users and applications to see all data fabric(s) and their linked volumes, buckets, and topics.

Single-click visibility and direct access to global data from any location.

Integrated S3 API is combined with HPE Ezmeral Data Fabric technology to deliver performance and scalability of all object sizes.

### Data Management Made Simple

User interface is easy to understand and operate without extensive instruction.

Point-and-click management allows authorized users to create volumes, buckets, and topics through menus while background processes set-up, configure, and attach components to data fabric(s) and namespace(s).

Self-service data fabric and component creation without IT intervention.

Delivers flexibility to data science teams to restore entire snapshot or individual files within the snapshot.

### Built for Hybrid Deployments

Data is stored once, accessed from anywhere using any industry standard protocol.

Built-in mirroring synchronizes data across locations reducing cloud costs, latency, and performance issues.

Single user interface sets-up and configures data management, security, and sovereignty across multiple locations.

## Technical specifications

## HPE Ezmeral Data Fabric Software

---

### Version

HPE Ezmeral Data Fabric version 7.1 and HPE Ezmeral Ecosystem Pack 9.0.x.

---

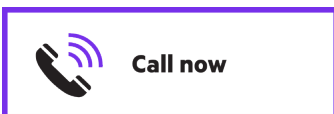
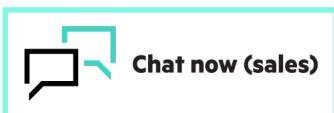
[1] [youtube.com/watch?v=GQ8CnkrfB-Y](https://www.youtube.com/watch?v=GQ8CnkrfB-Y)



[For additional technical information, available models and options, please reference the QuickSpecs](#)

**Make the right purchase decision.  
Contact our presales specialists.**

[Find a partner](#)



## HPE Services

No matter where you are in your transformation journey, you can count on HPE Services to deliver the expertise you need when, where and how you need it. From strategy and planning to deployment, ongoing operations and beyond, our experts can help you realize your digital ambitions.

### Consulting services

Experts can help you map out your path to hybrid cloud and optimize your operations.

### Managed services

HPE runs your IT operations, giving you unified control, so can focus on innovation.

### Operational services

Optimize your entire IT environment and drive innovation. Manage day-to-day IT operational tasks while freeing up valuable time and resources.

- HPE Complete Care Service: a modular service designed to help optimize your entire IT environment and achieve agreed upon IT outcomes and business goals. All delivered by an assigned team of HPE experts.
- HPE Tech Care Service: the operational service experience for HPE products. The service provides access to product specific experts, an AI driven digital experience, and general technical guidance to help reduce risk and search for ways to do things better.

### Lifecycle Services

Address your specific IT deployment project needs with tailored project management and deployment services.

### HPE Education Services

Training and certification designed for IT and business professionals across all industries. Create learning paths to expand proficiency in a specific subject. Schedule training in a way that works best for your business with flexible continuous learning options.

The Defective Media Retention (DMR) service feature option applies only to Disk or eligible SSD/Flash Drives replaced by Hewlett Packard Enterprise due to malfunction. Comprehensive Defective Material Retention (CDMR) allows you to keep all data retentive components.

## HPE GreenLake

HPE GreenLake edge-to-cloud platform is HPE's market-leading as-a-Service offering that brings the cloud experience to apps and data everywhere – data centers, multi-clouds, and edges – with one unified operating model, on premises, fully managed in a pay per use model.

If you are looking for more services, like **IT financing solutions**, please explore them [here](#).



© Copyright 2023 Hewlett Packard Enterprise Development LP. The information contained herein is subject to change without notice. The only warranties for Hewlett Packard Enterprise products and services are set forth in the express warranty statements accompanying such products and services. Nothing herein should be construed as constituting an additional warranty. Hewlett Packard Enterprise shall not be liable for technical or editorial errors or omissions contained herein.

Parts and Materials: HPE will provide HPE-supported replacement parts and materials required to maintain the covered hardware.

Parts and components that have reached their maximum supported lifetime and/or the maximum usage limitations as set forth in the manufacturer's operating manual, product quick-specs, or the technical product data sheet will not be provided, repaired, or replaced as part of these services.

Linux is the registered trademark of Linus Torvalds in the U.S. and other countries. Red Hat is a registered trademark of Red Hat, Inc. in the United States and other countries. VMware vSphere is a registered trademark or trademark of VMware, Inc. and its subsidiaries in the United States and other jurisdictions. Oracle is a registered trademark of Oracle and/or its affiliates. All third-party marks are property of their respective owners.

Image may differ from the actual product  
[PSN1013153530EMEA\\_MIDDLE\\_EASTEN](#), December, 2023.