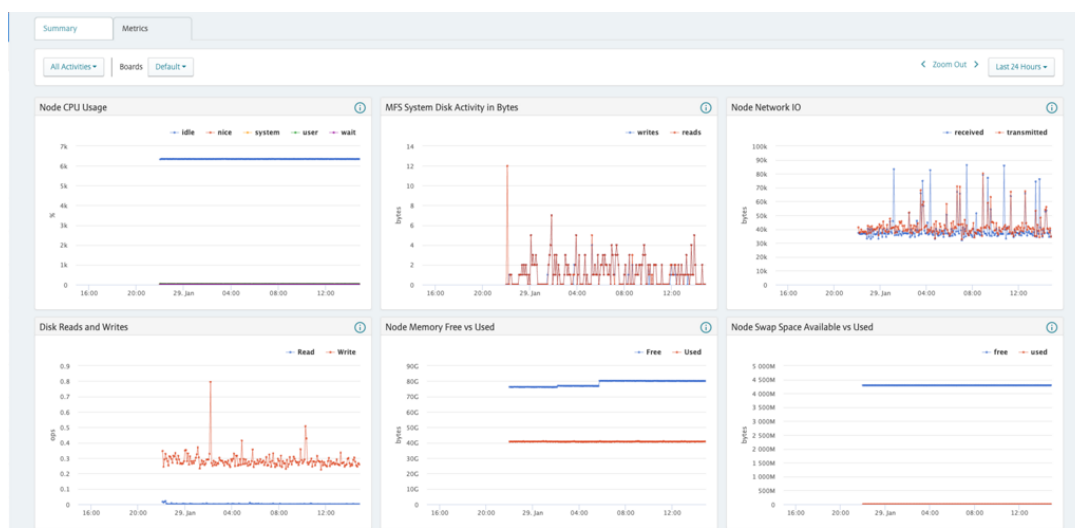


HPE Ezmeral Data Fabric Software

HPE Ezmeral Data Fabric Platform Bundle per Core E-LTU (R9J67AAE)



What's new

- Reduces data silos with a unified data lakehouse and centrally manages and governs data while accessing it directly where it resides.
- Access to structured, unstructured, and modern (Apache Iceberg) data is made possible through a directory structure known as a global namespace.
- Global namespace enables access and visibility to external sources such as NFS, S3, and Apache Iceberg.
- The solution provides a unified security platform for simplified management and

Overview

Rapidly changing markets demand quick insights to drive innovation. AI is key, but its potential is hindered by data scattered across multiple data formats and systems. HPE Ezmeral Data Fabric Software addresses this challenge by unifying diverse data into a secure data lakehouse. The HPE solution federates access, management, and governance across data formats and locations, decreasing data silos and accelerating AI initiatives. By processing data where it resides, we reduce latency and complexity, empowering organizations to extract maximum value from their data.

Features

Hybrid Data Plane

Provides federated data layer and unified control of hybrid multicloud environments.

Accelerates insights by combining files, objects, binary tables, and streaming

reduced risk.

- It can help maximize data value with automatic scaling for effortless AI and analytics.

data into a single source free of duplicates.

Abstracts data from the storage protocol enabling Big Data estates, cloud-based lakes and warehouses, Apache Spark, streaming, and table-based data to be seamlessly accessible and visible from a single user interface.

Potential cost savings in software licensing, support, and infrastructure.

Seamless Data Access

The built-in global namespace provides a single point of data access, allowing users and applications to see all available data, and a consistent access point that allows users and applications to see all data fabrics and their linked volumes, buckets, and topics.

Provides single-click visibility and direct access to global data from any location.

Data Management Made Simple

The user interface is easy to understand and operate without extensive instruction.

Point-and-click management simplifies the creation of data fabrics, volumes, buckets and topics through an intuitive wizard, while background processes handle the creation and configuration of all components.

The software provides self-service data fabric and component creation without IT intervention.

Built for Hybrid Deployments

Data is stored once and can be accessed from anywhere using any industry-standard protocol.

Built-in mirroring synchronizes data across locations, reducing cloud costs, latency, and performance issues.

Single user interface sets up and configures data management, security, and sovereignty across multiple locations.

Technical specifications

HPE Ezmeral Data Fabric Platform Bundle per Core E-LTU

Product Number

R9J67AAE

Version

HPE Ezmeral Data Fabric version 7.1 and HPE Ezmeral Ecosystem Pack 9.0.x.



For additional technical information, available models and options, please reference the QuickSpecs

HPE Services

No matter where you are in your transformation journey, you can count on HPE Services to deliver the expertise you need when, where and how you need it. From strategy and planning to deployment, ongoing operations and beyond, our experts can help you realize your digital ambitions.

Consulting services

Experts can help you map out your path to hybrid cloud and optimize your operations.

Managed services

HPE runs your IT operations, giving you unified control, so can focus on innovation.

Operational services

Optimize your entire IT environment and drive innovation. Manage day-to-day IT operational tasks while freeing up valuable time and resources.

- HPE Complete Care Service: a modular service designed to help optimize your entire IT environment and achieve agreed upon IT outcomes and business goals. All delivered by an assigned team of HPE experts.
- HPE Tech Care Service: the operational service experience for HPE products. The service provides access to product specific experts, an AI driven digital experience, and general technical guidance to help reduce risk and search for ways to do things better.

Lifecycle Services

Address your specific IT deployment project needs with tailored project management and deployment services.

HPE Education Services

Training and certification designed for IT and business professionals across all industries. Create learning paths to expand proficiency in a specific subject. Schedule training in a way that works best for your business with flexible continuous learning options.

The Defective Media Retention (DMR) service feature option applies only to Disk or eligible SSD/Flash Drives replaced by Hewlett Packard Enterprise due to malfunction. Comprehensive Defective Material Retention (CDMR) allows you to keep all data retentive components.

HPE GreenLake

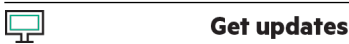
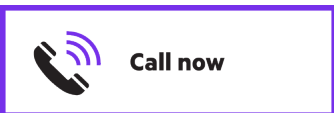
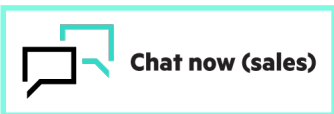
HPE GreenLake edge-to-cloud platform is HPE’s market-leading as-a-Service offering that brings the cloud experience to apps and data everywhere – data centers, multi-clouds, and edges – with one unified operating model, on premises, fully managed in a pay per use model.

If you are looking for more services, like **IT financing solutions**, please explore them [here](#).

Explore **HPE GreenLake**

Make the right purchase decision.
Contact our presales specialists.

[Find a partner](#)



© Copyright 2024 Hewlett Packard Enterprise Development LP. The information contained herein is subject to change without notice. The only warranties for Hewlett Packard Enterprise products and services are set forth in the express warranty statements accompanying such products and services. Nothing herein should be construed as constituting an additional warranty. Hewlett Packard Enterprise shall not be liable for technical or editorial errors or omissions contained herein.

Parts and Materials: HPE will provide HPE-supported replacement parts and materials required to maintain the covered hardware.

Parts and components that have reached their maximum supported lifetime and/or the maximum usage limitations as set forth in the manufacturer's operating manual, product quick-specs, or the technical product data sheet will not be provided, repaired, or replaced as part of these services.

Image may differ from the actual product [PSN1014652257DKEN](#), December, 2024.