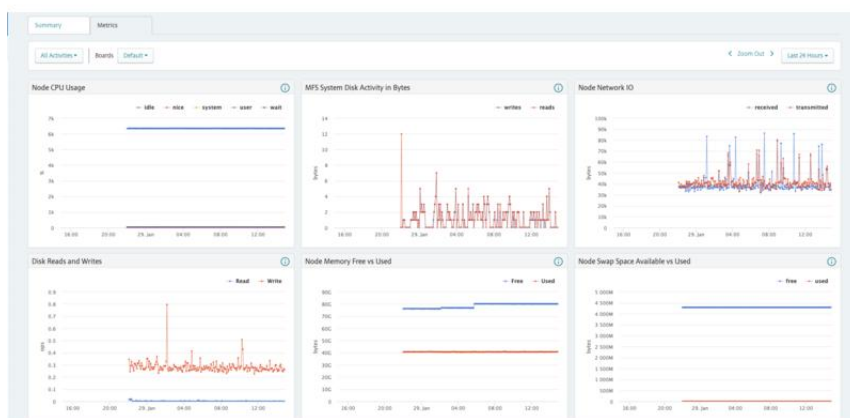


HPE EZMERAL DATA FABRIC 1TB 5-YEAR SUBSCRIPTION 24X7 SUPPORT E-LTU (R7L23AAE)

Artificial Intelligence and Analytics



WHAT'S NEW

- Addition of object data supporting standard S3 compatible API in addition to files, NoSQL databases, and event streams. All object sizes are supported and tuned for performance and storage.
- Dynamic data masking: real-time data

OVERVIEW

Does your enterprise need a persistent data store that unifies data and modernizes applications?

HPE Ezmeral Data Fabric ingests and stores different data types across data lakes, on-premises, cloud, and edge environments to provide a persistent data store that can be

masking to prevent access to sensitive data in JSON document database by configuring data masks without changing the original production data.

- Support for the Federal Information Processing Standard (FIPS) for data security and encryption using FIPS-approved cryptographic algorithms.
- Apache Spark 3.1.2 support including Delta lake for analytics on Objects, Files, and NoSQL databases.
- Performance optimization using Remote Direct Memory Access (RDMA) mitigates the TCP/IP problems by copying data directly between virtual memory buffers on two different machines.

leveraged across multiple use cases. The global data fabric and namespace enables teams to access data wherever it resides while maintaining governance, security, and geographic data regulations. Broad API support allows legacy and modern apps and AI/ML tools to access common datasets without changing existing access patterns or moving data before analysis can begin. Customized for analytics, customers can run Apache™ Spark, Delta Lake, or Livy on top of this foundational layer to achieve enterprise-wide impact. This solution is an excellent starting point for enterprises with a board-level mandate to use data to create a digital advantage for the organization.

FEATURES

Single Scalable, Reliable and Performance Data Platform

HPE Ezmeral Data Fabric features synchronous scaling of files and objects that reduces the need to maintain separate technology stacks and file systems. Multiple data types are stored in the persistent data store.

Single, global namespace simplifies application or interface access to data, regardless of where it resides.

Policy-based replication delivers enterprise-level high availability by reducing single points of failure across multiple nodes, clusters, and racks.

Built-in analytics reduces data copying across multiple systems with in-place data analysis, model refinement, and fast test modifications across edge to cloud.

Automatic load balancing enables multiple applications to access common datasets without congestion and hotspots.

Fine-tuned for Analytics by Providing Multiple APIs like Apache Spark SQL, Apache Drill and Hive

HPE Ezmeral Data Fabric's data store is tuned for advanced analytics, allowing customers to orchestrate both apps and data from a single control plane to increase productivity.

Unified, secure access to a single data store delivers a single source of truth increasing data engineering and data science productivity. Tap into data repositories that are not being managed by HPE Ezmeral Data Fabric to import additional data for experimentation and model training.

Auto-tier policies balance cost and performance by automatically moving data from high-performance to low-cost storage.

Integrated S3 API is combined with HPE Ezmeral Data Fabric technology to deliver performance and scalability of all object sizes.

Unified Management for Every Data Type

HPE Ezmeral Data Fabric utilizes platform-level automation and orchestration with policies to define security, access control, snapshots, mirrors, and replication of volumes, tables, objects, and streams.

Supports multi-protocol access via integrated S3, NFS, POSIX, REST, HDFS, and



container storage interface (CSI) APIs to simplify coding and data analytic model architectures.

Point-in-time snapshots create historical records for test/dev experiments as well as process and model validations by data scientists and data engineers.

Delivers flexibility to data science teams to restore entire snapshot or individual files within the snapshot.

Integrated platform for CDC and IoT data coming into Event Streams and then persisting it.

HPE Ezmeral Data Fabric supports near real-time data ingestion into Event Streams using CDC or IoT data and then allowing transformation and persistence in Files, Objects and/or NoSQL databases.

Technical specifications

**HPE Ezmeral Data Fabric 1TB 5-year Subscription
24x7 Support E-LTU**

Product Number	R7L23AAE
Warranty	© Copyright 2020 Hewlett Packard Enterprise Development LP. The information contained herein is subject to change without notice. The only warranties for Hewlett Packard Enterprise products and services are set forth in the express warranty statements accompanying such products and services. Nothing herein should be construed as constituting an additional warranty. Hewlett Packard Enterprise shall not be liable for technical or editorial errors or omissions contained herein.



For additional technical information, available models and options, please reference the [QuickSpecs](#)

HPE POINTNEXT SERVICES

HPE Pointnext Services brings together technology and expertise to help you drive your business forward and prepare for whatever is next.

Operational Services from HPE Pointnext Services

HPE Pointnext Tech Care provides fast access to product-specific experts, an AI-driven digital experience, and general technical guidance to help enable constant innovation. We have reimagined IT support from the ground up to deliver faster answers and greater value. By continuously searching for better ways to do things—as opposed to just fixing things that break—HPE Pointnext Tech Care helps you focus on achieving your business goals.

HPE Pointnext Complete Care is a modular, edge-to-cloud IT environment service that provides a holistic approach to optimizing your entire IT environment, and achieving agreed upon IT outcomes and business goals through a personalized and customer-centric experience. All delivered by an assigned team of HPE Pointnext Services experts.

HPE Integration and Performance Services help you customize your experience at any stage of your product lifecycle with a menu of services based on individual needs, workloads, and technologies.

- Advise, design, and transform
- Deploy
- Integrate and migrate
- Operate and improve
- Financial Services
- Greenlake Management Services
- Retire and sanitize
- IT Training and personal development

Other related services

HPE Education Services delivers a comprehensive range of services to support your people as they expand their skills required for a digital transformation. Consult your HPE Sales Representative or Authorized Channel Partner of choice for any additional questions and support options.

Defective Media Retention is optional and allows you to retain Disk or eligible SSD/Flash Drives replaced by HPE due to malfunction.

HPE GREENLAKE

HPE Greenlake is HPE's market-leading IT as-a-Service offering that brings the cloud experience to apps and data everywhere – data centers, multi-clouds, and edges – with one unified operating model. HPE GreenLake delivers public cloud services and infrastructure for workloads on premises, fully managed in a pay per use model.

If you are looking for more services, like **IT financing solutions**, please [explore them here](#).

Make the right purchase decision.
Contact our presales specialists.

[Find a partner](#)



Chat now (sales)



Call now



Buy now



Share now



Get updates

**Hewlett Packard
Enterprise**

© Copyright 2022 Hewlett Packard Enterprise Development LP. The information contained herein is subject to change without notice. The only warranties for Hewlett Packard Enterprise products and services are set forth in the express warranty statements accompanying such products and services. Nothing herein should be construed as constituting an additional warranty. Hewlett Packard Enterprise shall not be liable for technical or editorial errors or omissions contained herein.

Parts and Materials: HPE will provide HPE-supported replacement parts and materials required to maintain the covered hardware.

Parts and components that have reached their maximum supported lifetime and/or the maximum usage limitations as set forth in the manufacturer's operating manual, product quick-specs, or the technical product data sheet will not be provided, repaired, or replaced as part of these services.

Linux is the registered trademark of Linus Torvalds in the U.S. and other countries. Red Hat is a registered trademark of Red Hat, Inc. in the United States and other countries. Oracle is a registered trademark of Oracle and/or its affiliates. All third-party marks are property of their respective owners. Apache™ is a trademark of The Apache Software Foundation.

Image may differ from the actual product
[PSN1013287161TWEN](#), May, 2022.