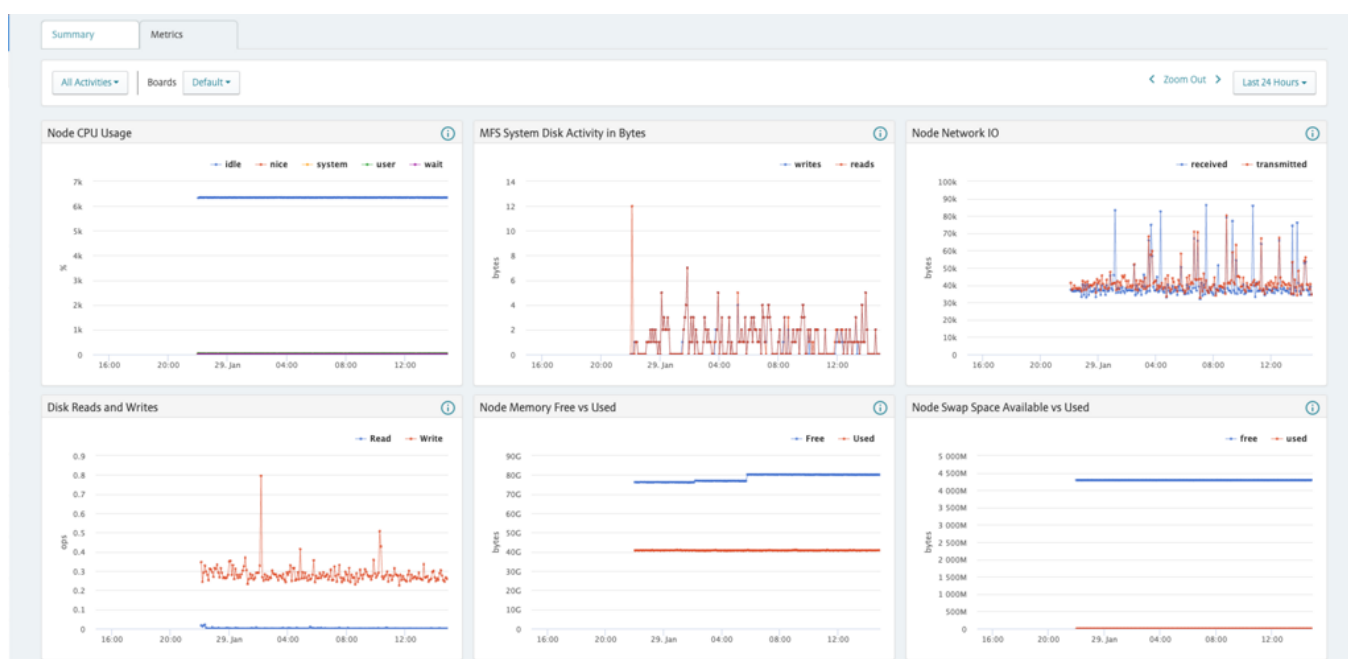


# HPE Ezmeral Data Fabric

## HPE Data Fabric Software File and Object Store 5-year 24x7 E-LTU (SOM36AAE)



### Что нового?

- AI-powered fabric: HPE Data Fabric Software now enables secure integration with AI models to support governance, compliance, and auditing use cases natively within the global namespace.
- Enhanced metadata intelligence with Apache Polaris providing unified metadata for governance, cross-engine catalog visibility, lineage tracking, auditability and enforcement across the lakehouse.
- External sources with GNS: Global namespace enables access and visibility to external sources such as NFS, S3, Apache Iceberg, and HPE Alletra Storage MP X10000.

### Обзор

HPE announces the next major release of the HPE Data Fabric Software, bringing AI to the complexities of optimizing and managing a global data plane. With this release of the HPE Data Fabric Software it is now easy to use AI for solving complex, multifaceted use cases in areas such as compliance, governance, security analysis, metadata management and monitoring across your enterprise's data assets.

- Streaming: Improved support for streaming data supporting high-velocity data processing and streaming analytics, enabling faster event-driven insights in the real time world.
- Data Movement Foundation, introduces event-driven object replication and data movement across hybrid S3 environments, enabling automated, scalable, and policy-ready data pipelines

## Функции

### AI Powered Data Fabric

New in this release HPE Data Fabric Software continues to advance its global namespace capabilities, bringing AI to a range of operational, governance, compliance, metadata management and application-based data use cases.

Adopting Model Context Protocol (MCP), the emerging standard for model-to-data interaction, offers a secure solution and future compatibility with the diverse and rapidly evolving set of AI tools.

Security is paramount. The solution is "zero trust" by design, and then it is enforced at multiple layers with no implicit trust between services, users, or components.

Extends zero trust principles to AI-driven workflows by propagating user identity through MCP into Polaris, enabling fine-grained, per-user governance and secure data access.

Combines AI with unified metadata and global namespace to enable intelligent data discovery, policy enforcement, and automated insights across enterprise data.

### Integrated Global Namespace

The built-in global namespace provides a single point of data access, allowing users and applications to see all available data, and a consistent access point that allows users and applications to see and access all of their enterprise data assets.

Unlocks the ability to optimize a customer's data landscape, reducing duplication, data movement and optimizing compute resources based on data affinity.

Accelerates insights by combining data from multiple enterprise systems into a single consistent global namespace.

Extends global namespace with Polaris catalog federation, enabling cross-cluster data access and unified metadata visibility.

Integrates open table formats like Apache Iceberg and external storage systems, enabling seamless hybrid and multi-cloud data access.

### Expanded Metadata Management Capabilities

This release expands the global namespace's metadata capture to lakehouse metadata. Now lakehouse metadata is collected and exposed through the AI interface, allowing both business and audit/governance questions of lakehouse metadata and reducing time to insights.

A lakehouse dimension catalog provides further metadata insight for governance and cross-engine catalog visibility, improving lineage tracking, auditability, and policy enforcement across the lakehouse ecosystem.

Enables cross-cluster metadata federation, allowing distributed Polaris catalogs to interoperate and provide unified governance.

Powers AI-driven metadata insights, accelerating compliance, auditing, and data lineage analysis across the enterprise.

### Built for Hybrid Deployments

HPE Data Fabric Software can both federate object and file data stores in the cloud and be deployed in the cloud and integrated into the global namespace, providing efficient connectivity and compute wherever the data resides.

Built-in mirroring synchronizes data across locations, latency, and performance issues.

Single user interface sets up and configures data management, security, and sovereignty across multiple locations.

Технические характеристики		HPE Data Fabric Software File and Object Store 5-year 24x7 E-LTU	
Product Number	SOM36AAE		
Условия предоставления поддержки	24x7		
Периодичность выставления счетов	Monthly Annually Upfront		

# HPE Services

No matter where you are in your transformation journey, you can count on HPE Services to deliver the expertise you need when, where and how you need it. From strategy and planning to deployment, ongoing operations and beyond, our experts can help you realize your digital ambitions.

## Advisory & Professional services

Experts can help you map out your path to hybrid cloud and optimize your operations.

## Managed services

HPE runs your IT operations, giving you unified control, so you can focus on innovation.

## Support services

Optimize your entire IT environment and drive innovation. Manage day-to-day IT operational tasks while freeing up valuable time and resources.

- **HPE Complete Care Service:** a modular service designed to help optimize your entire IT environment and achieve agreed upon IT outcomes and business goals. All delivered by an assigned team of HPE experts.
- **HPE Tech Care Service:** the operational service experience for HPE products. The service provides access to product specific experts, an AI driven digital experience, and general technical guidance to help reduce risk and search for ways to do things better.
- **HPE Multivendor Services:** Single point of accountability for managing on-site hardware and software support for multivendor products. HPE experts help manage your IT across technologies and platforms for HPE and non-HPE technologies, acting as the single point of contact for your IT operational needs.

## Lifecycle Services

Address your specific IT deployment project needs with tailored project management and deployment services.

## HPE Education Services

Training and certification designed for IT and business professionals across all industries. Create learning paths to expand proficiency in a specific subject. Schedule training in a way that works best for your business with flexible continuous learning options

**Defective Media Retention** is optional and allows you to retain Disk or eligible SSD/Flash Drives replaced by HPE due to malfunction.

## **GreenLake**

[GreenLake](#) is the cloud to run and manage your entire hybrid landscape—private, public, and edge. It helps you to:

- Streamline IT Operations across compute, storage, and networking without the chaos
- Unify and secure data, as you move faster
- Accelerate AI, from pilot to production

The result: greater operational efficiency, lower TCO, and faster AI delivery—all from one unified, intelligent platform built for today's hybrid enterprise.

[Для получения дополнительной технической информации, доступных моделей и опций обратитесь к QuickSpecs](#)

Visit [HPE.com](#)

[Чат](#)

© Hewlett Packard Enterprise Development LP, 2026 г. Информация в настоящем документе может быть изменена без предварительного уведомления. Гарантийные обязательства для продуктов и услуг Hewlett Packard Enterprise приведены только в условиях явной гарантии, прилагаемой к каждому продукту и услуге. Никакие сведения в данном документе не могут рассматриваться как дополнительные гарантийные обязательства. Hewlett Packard Enterprise не несет ответственности за технические или редакторские ошибки и упущения в данном документе.

Компоненты и материалы: Компания HPE предоставит запасные части и материалы, поддерживаемые HPE, которые требуются для обслуживания оборудования по договору.

Данная услуга не подразумевает предоставление, ремонт или замену деталей и компонентов, которые достигли своего максимального срока службы и (или) лимита использования (согласно данным руководства по эксплуатации, кратким техническим руководствам или технической документации, предоставленной производителем).

Изображение может отличаться от реального изделия.

[PSN1014675532BYRU](#), июня, 2026.

HEWLETT PACKARD ENTERPRISE

[hpe.com](#)

