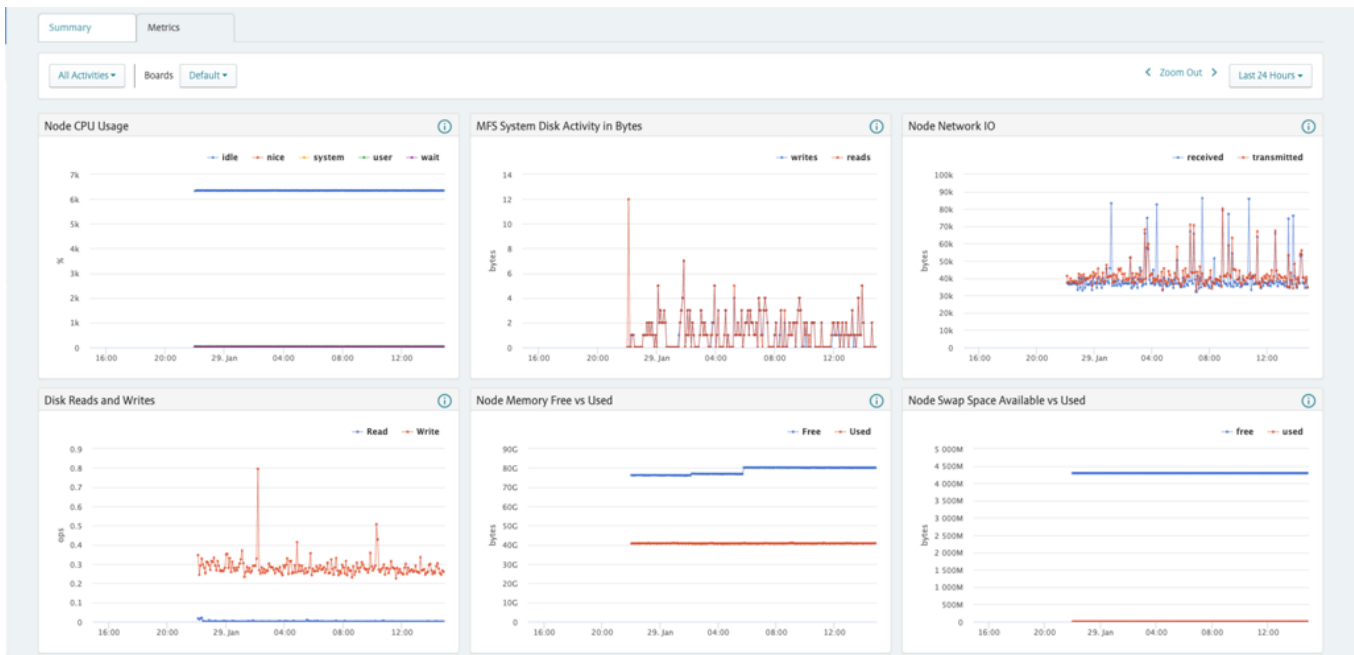


HPE Data Fabric Software

HPE Data Fabric Software Analytics for Apache Spark 4-year 24x7 E-LTU (SOM40AAE)



What's new

- AI-powered fabric: HPE Data Fabric Software now enables secure integration with AI models to support governance, compliance, and auditing use cases natively within the global namespace.
- Enhanced metadata intelligence with Apache Polaris providing unified metadata for governance, cross-engine catalog visibility, lineage tracking, auditability and enforcement across the lakehouse.

Overview

HPE announces the next major release of the HPE Data Fabric Software, bringing AI to the complexities of optimizing and managing a global data plane. With this release of the HPE Data Fabric Software it is now easy to use AI for solving complex, multifaceted use cases in areas such as compliance, governance, security analysis, metadata management and monitoring across your enterprise's data assets.

- External sources with GNS: Global namespace enables access and visibility to external sources such as NFS, S3, Apache Iceberg, and HPE Alletra Storage MP X10000.
- Streaming: Improved support for streaming data supporting high-velocity data processing and streaming analytics, enabling faster event-driven insights in the real time world.
- Data Movement Foundation, introduces event-driven object replication and data movement across hybrid S3 environments, enabling automated, scalable, and policy-ready data pipelines
- Storage Efficiency (IEC), Inline Erasure Coding enables near real-time data protection and reduces storage overhead, eliminating delayed offload cycles.

Features

AI Powered Data Fabric

New in this release HPE Data Fabric Software continues to advance its global namespace capabilities, bringing AI to a range of operational, governance, compliance, metadata management and application-based data use cases.

Adopting Model Context Protocol (MCP), the emerging standard for model-to-data interaction, offers a secure solution and future compatibility with the diverse and rapidly evolving set of AI tools.

Security is paramount. The solution is "zero trust" by design, and then it is enforced at multiple layers with no implicit trust between services, users, or components.

Extends zero trust principles to AI-driven workflows by propagating user identity through MCP into Polaris, enabling fine-grained, per-user governance and secure data access.

Combines AI with unified metadata and global namespace to enable intelligent data discovery, policy enforcement, and automated insights across enterprise data.

Integrated Global Namespace

The built-in global namespace provides a single point of data access, allowing users and applications to see all available data, and a consistent access point that allows users and applications to see and access all of their enterprise data assets.

Unlocks the ability to optimize a customer's data landscape, reducing duplication, data movement and optimizing compute resources based on data affinity.

Accelerates insights by combining data from multiple enterprise systems into a single consistent global namespace.

Extends global namespace with Polaris catalog federation, enabling cross-cluster data access and unified metadata visibility.

Integrates open table formats like Apache Iceberg and external storage systems, enabling seamless hybrid and multi-cloud data access.

Expanded Metadata Management Capabilities

This release expands the global namespace's metadata capture to lakehouse metadata. Now lakehouse metadata is collected and exposed through the AI interface, allowing both business and audit/governance questions of lakehouse metadata and reducing time to insights.

A lakehouse dimension catalog provides further metadata insight for governance and cross-engine catalog visibility, improving lineage tracking, auditability, and policy enforcement across the lakehouse ecosystem.

Enables cross-cluster metadata federation, allowing distributed Polaris catalogs to interoperate and provide unified governance.

Powers AI-driven metadata insights, accelerating compliance, auditing, and data lineage analysis across the enterprise.

Built for Hybrid Deployments

HPE Data Fabric Software can both federate object and file data stores in the cloud and be deployed in the cloud and integrated into the global namespace, providing efficient connectivity and compute wherever the data resides.

Built-in mirroring synchronizes data across locations, latency, and performance issues.

Single user interface sets up and configures data management, security, and sovereignty across multiple locations.

Eventdriven object replication seamlessly moves data across cloud, edge, and onprem environments.

Automated tiering with integrated lifecycle management and inline erasure coding cuts costs and maximizes efficiency.

Technical specifications	HPE Data Fabric Software Analytics for Apache Spark 4-year 24x7 E-LTU
Product Number	SOM40AAE
Support coverage	24x7
Billing frequency	Monthly Annually Upfront

HPE Services

No matter where you are in your transformation journey, you can count on HPE Services to deliver the expertise you need when, where and how you need it. From strategy and planning to deployment, ongoing operations and beyond, our experts can help you realize your digital ambitions.

[Advisory & Professional services](#)

Experts can help you map out your path to hybrid cloud and optimize your operations.

[Managed services](#)

HPE runs your IT operations, giving you unified control, so can focus on innovation.

[Support services](#)

Optimize your entire IT environment and drive innovation. Manage day-to-day IT operational tasks while freeing up valuable time and resources.

- **HPE Complete Care Service:** a modular service designed to help optimize your entire IT environment and achieve agreed upon IT outcomes and business goals. All delivered by an assigned team of HPE experts.
- **HPE Tech Care Service:** the operational service experience for HPE products. The service provides access to product specific experts, an AI driven digital experience, and general technical guidance to help reduce risk and search for ways to do things better.
- **HPE Multivendor Services:** Single point of accountability for managing on-site hardware and software support for multivendor products. HPE experts help manage your IT across technologies and platforms for HPE and non-HPE technologies, acting as the single point of contact for your IT operational needs.

[Lifecycle Services](#)

Address your specific IT deployment project needs with tailored project management and deployment services.

[HPE Education Services](#)

Training and certification designed for IT and business professionals across all industries. Create learning paths to expand proficiency in a specific subject. Schedule training in a way that works best for your business with flexible continuous learning options

Defective Media Retention is optional and allows you to retain Disk or eligible SSD/Flash Drives replaced by HPE due to malfunction.

GreenLake

[GreenLake](#) is the cloud to run and manage your entire hybrid landscape—private, public, and edge. It helps you to:

- Streamline IT Operations across compute, storage, and networking without the chaos
- Unify and secure data, as you move faster
- Accelerate AI, from pilot to production

The result: greater operational efficiency, lower TCO, and faster AI delivery—all from one unified, intelligent platform built for today's hybrid enterprise.

[For additional technical information, available models and options, please reference the QuickSpecs](#)

Visit [HPE.com](https://www.hpe.com)

[Chat now](#)

© Copyright 2026 Hewlett Packard Enterprise Development LP. The information contained herein is subject to change without notice. The only warranties for Hewlett Packard Enterprise products and services are set forth in the express warranty statements accompanying such products and services. Nothing herein should be construed as constituting an additional warranty. Hewlett Packard Enterprise shall not be liable for technical or editorial errors or omissions contained herein.

Parts and Materials: HPE will provide HPE-supported replacement parts and materials required to maintain the covered hardware.

Parts and components that have reached their maximum supported lifetime and/or the maximum usage limitations as set forth in the manufacturer's operating manual, product quick-specs, or the technical product data sheet will not be provided, repaired, or replaced as part of these services.

Image may differ from the actual product.

[PSN1014675364USEN](#), June, 2026.

HEWLETT PACKARD ENTERPRISE

[hpe.com](https://www.hpe.com)

