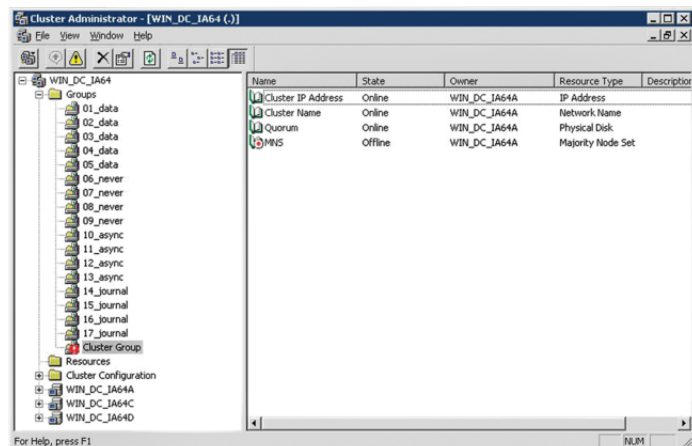


HPE CLUSTER EXTENSION SOFTWARE

Storage Replication Software



WHAT'S NEW

- Support for 3PAR OS 3.2.2
- Support for Windows 2012 R2
- Support for VMware vSphere v5.5
- Support for XP v06 firmware version
- Support for EVA CV v10.3
- Support for Async Streaming Mode of replication for 3PAR Remote Copy

OVERVIEW

If you have been worried about data protection and system downtime, then your worries are now over.

HPE Cluster Extension Software (CLX) is an integrated solution that works with HPE Storage Array to protect against system downtime. Delivering automatic failover of application services and read/write enabling of remotely mirrored mid-range/high-end storage over metropolitan distances. CLX delivers true hands-free failover/failback decision making. If a storage

administrator is unaware of the outage, unable to respond, or not present, HPE Cluster Extension Software can manage the failover because it requires no server reboots or LUN presentation/mapping changes during failover.

CLX Software supports the entire HPE 3PAR/3PAR StoreServ, XP/P9500 and EVA/P6000 arrays.

FEATURES

Protection Against System Downtime

HPE Cluster Extension Software (CLX) provides hands-free failover/failback decision-making because it detects failures and automatically manages recovery without human intervention. Helps meet recovery point and recovery time objectives (RPO & RTO).

Cluster Extension Software supports no reboots and LUN presentation/mapping changes during failover; servers on both sides recognized from the initial boot.

Cluster Extension Software performs read/write enabling of remotely mirrored storage.

Cluster Extension Software reliably supports automatic failover of application services over global distances.

Scalable, Reliable and Available

HPE Cluster Extension Software provides scalability to extending a single cluster over metropolitan or global distances.

Cluster Extension Software reliably supports automatic failover of application services over global distances.

Cluster Extension Software monitors and recovers disk pair synchronization on an application level.

Cluster Extension Software provides highest standards in data integrity by maximizing the advantages of HPE Continuous Access Software.

Flexibility with other Storage Arrays and Operating Systems

HPE Cluster Extension Software supports all the 3PAR, XP/P9500 and EVA/P6000 class arrays.

Cluster Extension Software integrates with Microsoft Cluster Service / Windows Server Failover Clustering on Windows Server.



Technical specifications

HPE Cluster Extension Software

Supported hardware environment	HPE 3PAR/3PAR StoreServ, XP/P9000 and EVA/P6000 Disk Arrays
Replication distance	Up to 200Km for synchronous and unlimited distance for asynchronous replication
Replication type	Array based
Warranty	Includes one year of HPE Software Support 24 x 7 (software technical support and software product and documentation updates).



For additional technical information, available models and options, please reference the [QuickSpecs](#)

HPE POINTNEXT SERVICES

[HPE Pointnext Services](#) brings together technology and expertise to help you drive your business forward and prepare for whatever is next.

Operational Services from HPE Pointnext Services

[HPE Pointnext Tech Care](#) provides fast access to product-specific experts, an AI-driven digital experience, and general technical guidance to help enable constant innovation. We have reimagined IT support from the ground up to deliver faster answers and greater value. By continuously searching for better ways to do things—as opposed to just fixing things that break—HPE Pointnext Tech Care helps you focus on achieving your business goals.

[HPE Pointnext Complete Care](#) is a modular, edge-to-cloud IT environment service that provides a holistic approach to optimizing your entire IT environment, and achieving agreed upon IT outcomes and business goals through a personalized and customer-centric experience. All delivered by an assigned team of HPE Pointnext Services experts.

HPE Integration and Performance Services help you customize your experience at any stage of your product lifecycle with a menu of services based on individual needs, workloads, and technologies.

- Advise, design, and transform
- Deploy
- Integrate and migrate
- Operate and improve
- Financial Services
- Greenlake Management Services
- Retire and sanitize
- IT Training and personal development

Other related services

[HPE Education Services](#) delivers a comprehensive range of services to support your people as they expand their skills required for a digital transformation. Consult your HPE Sales Representative or Authorized Channel Partner of choice for any additional questions and support options.

Defective Media Retention is optional and allows you to retain Disk or eligible SSD/Flash Drives replaced by HPE due to malfunction.

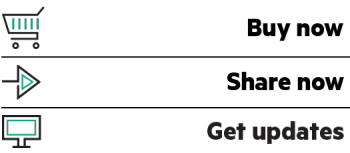
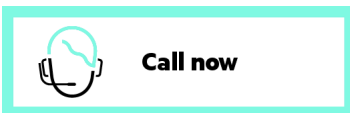
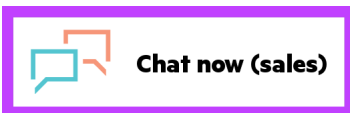
HPE GREENLAKE

[HPE Greenlake](#) is HPE's market-leading IT as-a-Service offering that brings the cloud experience to apps and data everywhere – data centers, multi-clouds, and edges – with one unified operating model. HPE GreenLake delivers public cloud services and infrastructure for workloads on premises, fully managed in a pay per use model.

If you are looking for more services, like **IT financing solutions**, please [explore them here](#).

Make the right purchase decision.
Contact our presales specialists.

[Download](#)



© Copyright 2022 Hewlett Packard Enterprise Development LP. The information contained herein is subject to change without notice. The only warranties for Hewlett Packard Enterprise products and services are set forth in the express warranty statements accompanying such products and services. Nothing herein should be construed as constituting an additional warranty. Hewlett Packard Enterprise shall not be liable for technical or editorial errors or omissions contained herein.

Parts and Materials: HPE will provide HPE-supported replacement parts and materials required to maintain the covered hardware. Parts and components that have reached their maximum supported lifetime and/or the maximum usage limitations as set forth in the manufacturer's operating manual, product quick-specs, or the technical product data sheet will not be provided, repaired, or replaced as part of these services.

Image may differ from the actual product
[PSN4304988USEN](#), October, 2022.