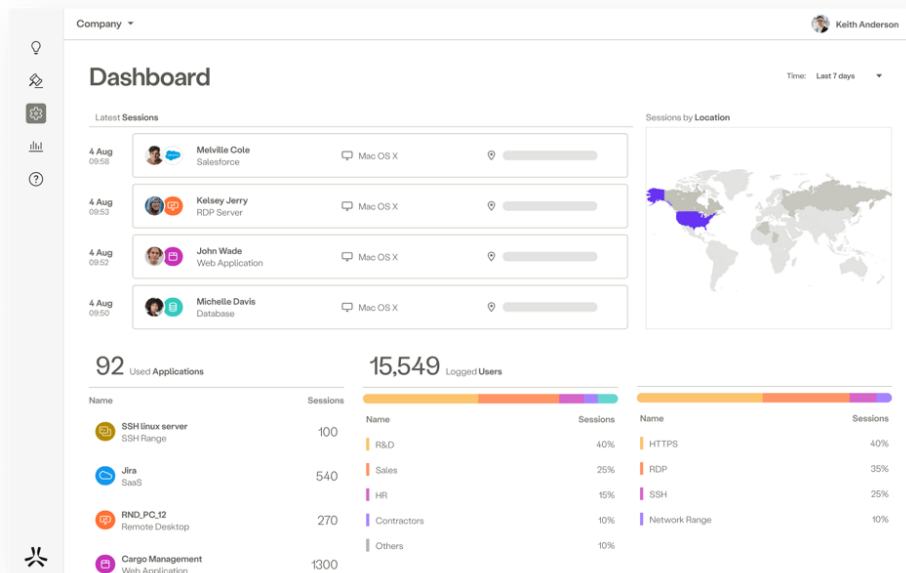


HPE Aruba Networking SSE

HPE Aruba Networking SSE Foundation Premier CSP 1K-9999 Users Per User 5yr Annual Subscription SaaS (S4C66AAS)



What's new

- New SSE Dashboards serve as your central hub for managing and monitoring ZTNA, SWG, and CASB services within a single view point.
- New SSE PoP locations added every month! Newest PoPs located in Cardiff, UK, Groningen, Netherlands, and Taoyuan, Taiwan.
- Quarterly periodic billing option is also available along with upfront and annual periodic billing options.

Overview

HPE Aruba Networking SSE is an integral part of a unified SASE framework, offering a modern approach to traditional network security technologies like firewalls, VPN gateway appliances, web gateway appliances, and more. With over 500 edge locations, HPE Aruba Networking SSE brings access as close to the user as possible, seamlessly connecting users, devices, and servers to essential business resources.

This cloud-delivered SSE platform feels effortlessly light and integrates four primary security solutions into one, managed through a single-pane-of-glass interface:

- * Zero Trust Network Access (ZTNA) for private apps
- * Secure Web Gateway (SWG) for web access
- * Cloud Access Security Broker (CASB) for SaaS apps

* Digital Experience Monitoring (DEM) to help ensure user productivity

Embrace modern connectivity with enhanced security in a single, cloud-delivered solution and empower IT teams to control all user and application access, regardless of location, device, or network.

Features

Unified Security and Networking

HPE Aruba Networking SSE integrates ZTNA, SWG, CASB, and DEM into a single interface, simplifying management by allowing administrators to enforce one policy across resources, reducing complexity, and improving efficiency.

The solution provides a centralized platform for monitoring and managing security policies, which helps in reducing administrative overhead and validating consistent security enforcement across the network.

It enhances visibility and control over network traffic, making it easier to detect and respond to potential threats in real time.

Enhanced Zero Trust Security

HPE Aruba Networking SSE constantly monitors and adapts policies based on identity, location, and device health, providing access with enhanced security for all users, devices, and applications. This dynamic approach helps maintain robust security postures even as conditions change.

The solution implements Zero Trust principles by verifying every access request, regardless of where it originates, to prevent unauthorized access and reduce the risk of data breaches.

You can utilize advanced threat detection and response capabilities to identify and mitigate security threats before they can cause significant damage.

Enhanced Performance and Connectivity

HPE Aruba Networking SSE auto-routes traffic through the fastest path across a multi-cloud backbone, reducing latency and increasing redundancy. This verifies that users experience minimal delays and IT teams benefit from enhanced network reliability.

[1] You can leverage a global network of over 500 edge locations across one of the most trusted cloud architectures —Azure, AWS, GCP— to provide consistent and high-performance connectivity for users, regardless of their geographic location.

You can customize application performance by dynamically adjusting network paths based on real-time conditions, warranting that critical applications receive the bandwidth and priority they need.

Simplified SASE Adoption

HPE Aruba Networking SSE works alongside EdgeConnect SD-WAN for a powerful, unified SASE platform, bringing security and networking teams together. This integration streamlines the adoption process, making it easier for organizations to implement comprehensive security and networking measures.

The solution can reduce the complexity of deploying and managing security solutions by providing a single, cohesive platform that addresses both networking and security needs.

It facilitates a smoother transition to a SASE architecture by offering integrated solutions that are designed to work seamlessly together, reducing the need for extensive customization and configuration.

Technical specifications	HPE Aruba Networking SSE Foundation Premier CSP 1K-9999 Users Per User 5yr Annual Subscription SaaS
Product Number	S4C66AAS
Platform supported	HPE Aruba Networking Platforms, see QuickSpecs for more information
Service method	SaaS
Billing frequency	Annual
Duration (term)	5-year
Support coverage	24x7x365
Tier	Foundation Premier CSP

[1] GCP is a registered trademark of Google LLC. Azure is either a registered trademark or trademark of Microsoft Corporation in the United States and/or other countries. All third-party marks are property of their respective owners

HPE Aruba Networking Services

HPE Aruba Networking services simplify and accelerate the network technology lifecycle, enabling your network to scale with better predictability and cost-effectiveness. Whether you operate your own network and need to improve your IT efficiencies, or you want to offload some of the burden, we have the services you need to reach your goals.

Learn more about what HPE Services - Aruba Networking has to offer at: hpe.com/edge/services

Support Services

Our support portfolio provides the essential support elements as well as proactive and preventive features to help you improve your team's productivity and get the most from your network. Our support customers benefit from faster issue resolution, simplified operations and efficiencies, and reduced network issues.

Professional Services

With deep intellectual capital and purpose-built tools, our team delivers a range of standard and custom professional services designed to accelerate your value from HPE Aruba Networking technology.

Project based services include:

- Planning, audit, and assessment
- Architecture review and design
- Deployment, migration, and knowledge transfer

Annual subscription services include:

- Network optimization
- Intelligent Operations
- Customer Experience Management

Our [Education Services](#) allow your team to come up to speed quickly.

GreenLake for Networking

Deliver innovative business outcomes by leveraging new ways to consume, deploy and [manage networks](#).

[For additional technical information, available models and options, please reference the QuickSpecs](#)

Visit [HPE.com](https://www.hpe.com)

[Chat now](#)

© Copyright 2026 Hewlett Packard Enterprise Development LP. The information contained herein is subject to change without notice. The only warranties for Hewlett Packard Enterprise products and services are set forth in the express warranty statements accompanying such products and services. Nothing herein should be construed as constituting an additional warranty. Hewlett Packard Enterprise shall not be liable for technical or editorial errors or omissions contained herein.

Parts and Materials: HPE will provide HPE-supported replacement parts and materials required to maintain the covered hardware.

Parts and components that have reached their maximum supported lifetime and/or the maximum usage limitations as set forth in the manufacturer's operating manual, product quick-specs, or the technical product data sheet will not be provided, repaired, or replaced as part of these services.

Image may differ from the actual product.

[PSN1014844485PTEN](#), May, 2026.

HEWLETT PACKARD ENTERPRISE

[hpe.com](https://www.hpe.com)

