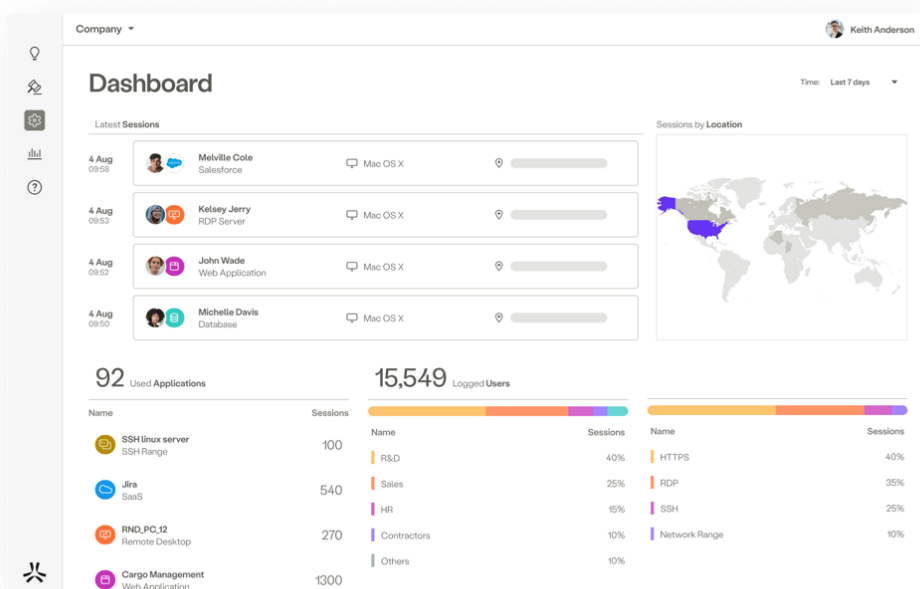


HPE Aruba Networking SSE

HPE Aruba Networking SSE Foundation Plus Premier CSP 1-999 Users Per User 1-year Subscription SaaS (SOH52AAS)



Что нового?

- New SSE Dashboards serve as your central hub for managing and monitoring ZTNA, SWG, and CASB services within a single view point.
- New SSE PoP locations added every month! Newest PoPs located in Cardiff, UK, Groningen, Netherlands, and Taoyuan, Taiwan.
- Quarterly periodic billing option is also available along with upfront and annual periodic billing options.

Обзор

HPE Aruba Networking SSE is an integral part of a unified SASE framework, offering a modern approach to traditional network security technologies like firewalls, VPN gateway appliances, web gateway appliances, and more. With over 500 edge locations, HPE Aruba Networking SSE brings access as close to the user as possible, seamlessly connecting users, devices, and servers to essential business resources.

This cloud-delivered SSE platform feels effortlessly light and integrates four primary security solutions into one, managed through a single-pane-of-glass interface:

- * Zero Trust Network Access (ZTNA) for private apps
- * Secure Web Gateway (SWG) for web access
- * Cloud Access Security Broker (CASB) for SaaS apps
- * Digital Experience Monitoring (DEM) to help ensure user productivity

Embrace modern connectivity with enhanced security in a single, cloud-delivered solution and empower IT teams to control all user and application access, regardless of location, device, or network.

Функции

Unified Security and Networking

HPE Aruba Networking SSE integrates ZTNA, SWG, CASB, and DEM into a single interface, simplifying management by allowing administrators to enforce one policy across resources, reducing complexity, and improving efficiency.

The solution provides a centralized platform for monitoring and managing security policies, which helps in reducing administrative overhead and validating consistent security enforcement across the network.

It enhances visibility and control over network traffic, making it easier to detect and respond to potential threats in real time.

Enhanced Zero Trust Security

HPE Aruba Networking SSE constantly monitors and adapts policies based on identity, location, and device health, providing access with enhanced security for all users, devices, and applications. This dynamic approach helps maintain robust security postures even as conditions change.

The solution implements Zero Trust principles by verifying every access request, regardless of where it originates, to prevent unauthorized access and reduce the risk of data breaches.

You can utilize advanced threat detection and response capabilities to identify and mitigate security threats before they can cause significant damage.

Enhanced Performance and Connectivity

HPE Aruba Networking SSE auto-routes traffic through the fastest path across a multi-cloud backbone, reducing latency and increasing redundancy. This verifies that users experience minimal delays and IT teams benefit from enhanced network reliability.

[1] You can leverage a global network of over 500 edge locations across one of the most trusted cloud architectures —Azure, AWS, GCP— to provide consistent and high-performance connectivity for users, regardless of their geographic location.

You can customize application performance by dynamically adjusting network paths based on real-time conditions, warranting that critical applications receive the bandwidth and priority they need.

Simplified SASE Adoption

HPE Aruba Networking SSE works alongside EdgeConnect SD-WAN for a powerful, unified SASE platform, bringing security and networking teams together. This integration streamlines the adoption process, making it easier for organizations to implement comprehensive security and networking measures.

The solution can reduce the complexity of deploying and managing security solutions by providing a single, cohesive platform that addresses both networking and security needs.

It facilitates a smoother transition to a SASE architecture by offering integrated solutions that are designed to work seamlessly together, reducing the need for extensive customization and configuration.

| Технические характеристики | | HPE Aruba Networking SSE Foundation Plus Premier CSP 1-999 Users Per User 1-year Subscription SaaS |
|----------------------------------|---|--|
| Product Number | SOH52AAS | |
| Поддерживаемые платформы | HPE Aruba Networking Platforms, see QuickSpecs for more information | |
| Способ предоставления услуги | SaaS | |
| Периодичность выставления счетов | Upfront | |
| Условия предоставления поддержки | 24x7x365 | |
| Уровень | Foundation Plus CSP | |

[1] GCP is a registered trademark of Google LLC. Azure is either a registered trademark or trademark of Microsoft Corporation in the United States and/or other countries. All third-party marks are property of their respective owners

HPE Aruba Networking Services

HPE Aruba Networking services simplify and accelerate the network technology lifecycle, enabling your network to scale with better predictability and cost-effectiveness. Whether you operate your own network and need to improve your IT efficiencies, or you want to offload some of the burden, we have the services you need to reach your goals.

Learn more about what HPE Services - Aruba Networking has to offer at: hpe.com/edge/services

Support Services

Our support portfolio provides the essential support elements as well as proactive and preventive features to help you improve your team's productivity and get the most from your network. Our support customers benefit from faster issue resolution, simplified operations and efficiencies, and reduced network issues.

Professional Services

With deep intellectual capital and purpose-built tools, our team delivers a range of standard and custom professional services designed to accelerate your value from HPE Aruba Networking technology.

Project based services include:

- Planning, audit, and assessment
- Architecture review and design
- Deployment, migration, and knowledge transfer

Annual subscription services include:

- Network optimization
- Intelligent Operations
- Customer Experience Management

Our [Education Services](#) allow your team to come up to speed quickly.

HPE GreenLake for Networking

Our NaaS solution, is part of the HPE GreenLake services family, and simplifies network operations, accelerates equipment handling, and increases the value of your HPE Aruba Networking solution. If you need expert guidance and automation-based operations for your team, please explore our NaaS approach through HPE GreenLake for Networking.

[Для получения дополнительной технической информации, доступных моделей и опций обратитесь к QuickSpecs](#)

Visit HPE.com

[Чат](#)

© Hewlett Packard Enterprise Development LP, 2026 г. Информация в настоящем документе может быть изменена без предварительного уведомления. Гарантийные обязательства для продуктов и услуг Hewlett Packard Enterprise приведены только в условиях явной гарантии, прилагаемой к каждому продукту и услуге. Никакие сведения в данном документе не могут рассматриваться как дополнительные гарантийные обязательства. Hewlett Packard Enterprise не несет ответственности за технические или редакторские ошибки и упущения в данном документе.

Компоненты и материалы: Компания HPE предоставит запасные части и материалы, поддерживаемые HPE, которые требуются для обслуживания оборудования по договору.

Данная услуга не подразумевает предоставление, ремонт или замену деталей и компонентов, которые достигли своего максимального срока службы и (или) лимита использования (согласно данным руководства по эксплуатации, кратким техническим руководствам или технической документации, предоставленной производителем).

Изображение может отличаться от реального изделия.

[PSN1014787564UARU](#), марта, 2026.

HEWLETT PACKARD ENTERPRISE

[hpe.com](#)

