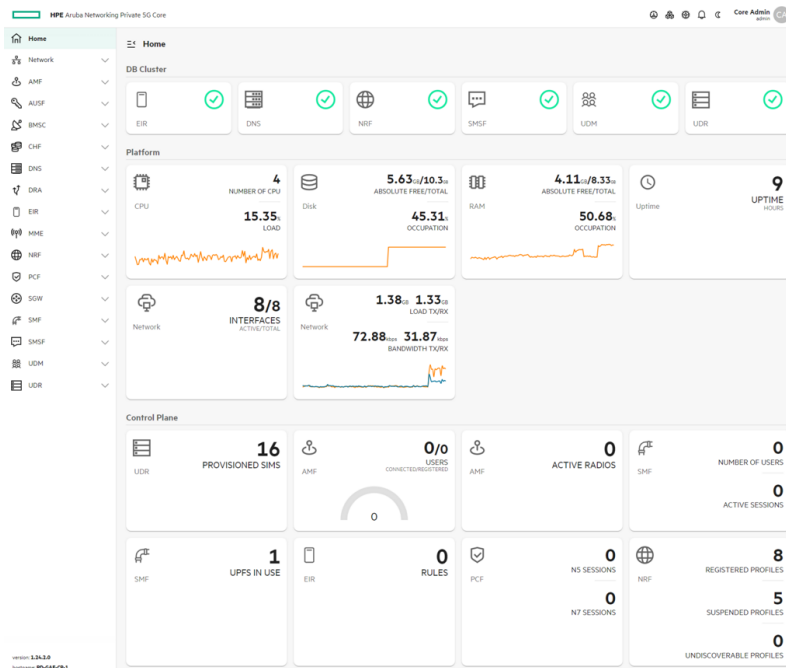


# HPE Aruba Networking Private 5G Management Dashboard



## Overview

Are you struggling to manage multiple mobile private networks? Are you struggling to support many customers having remote sites? HPE Aruba Networking Private 5G Management Dashboard is a private network management platform that features multi-tenant provisioning and monitoring and role-based access for enhanced security. Allow system admins and operators to handle multiple customers or business units with user-specific roles, access, and resources. Simplify operations with central provisioning (SIMs), configuration, and monitoring via a single application. Utilize HPE Aruba Networking Private 5G Management Dashboard to manage multiple 4G/5G private networks for efficient provisioning of SIMs, service profiles, and associated quality of service (QoS) with KPI monitoring and reporting of traffic data.

# Features

## **Multi-tenant Management of Distributed Private Mobile Networks**

HPE Aruba Networking Private 5G Management Dashboard delivers network management visibility securely across multiple entities on a single console with multi-tenant resource segregation and granular role-based access control on what users can perform when managing the network.

With provisioning of SIMs, service profiles, and associated quality of service, the full SIM lifecycle is supported from workflow management to status monitoring.

Centralized configuration management enables consistency across distributed networks.

Traffic reporting at network level, helping understanding the usage of the network.

## **KPI-based Monitoring for Relevant Data**

HPE Aruba Networking Private 5G Management Dashboard makes it easier to manage service levels with real-time KPIs for network monitoring and troubleshooting.

Capture and display performance KPIs for radio status, access status, and network usage status.

## **Delivers Key Insights With Traffic Reporting**

HPE Aruba Networking Private 5G Management Dashboard offers traffic data reporting, filtering and aggregation based on Call Data Records (CDRs).

Gain valuable insight with traffic descriptive reports and historical data to detect anomalies and trends over time.

Leverage a data repository with CDR data that has been cleansed, enriched, and stored for additional analysis.

# HPE Aruba Networking Services

HPE Aruba Networking services simplify and accelerate the network technology lifecycle, enabling your network to scale with better predictability and cost-effectiveness. Whether you operate your own network and need to improve your IT efficiencies, or you want to offload some of the burden, we have the services you need to reach your goals.

Learn more about what HPE Services - Aruba Networking has to offer at: [hpe.com/edge/services](https://hpe.com/edge/services)

## Support Services

Our support portfolio provides the essential support elements as well as proactive and preventive features to help you improve your team's productivity and get the most from your network. Our support customers benefit from faster issue resolution, simplified operations and efficiencies, and reduced network issues.

## Professional Services

With deep intellectual capital and purpose-built tools, our team delivers a range of standard and custom professional services designed to accelerate your value from HPE Aruba Networking technology.

### Project based services include:

- Planning, audit, and assessment
- Architecture review and design
- Deployment, migration, and knowledge transfer

### Annual subscription services include:

- Network optimization
- Intelligent Operations
- Customer Experience Management

Our [Education Services](#) allow your team to come up to speed quickly.

## GreenLake for Networking

Deliver innovative business outcomes by leveraging new ways to consume, deploy and [manage networks](#).

[For additional technical information, available models and options, please reference the QuickSpecs](#)

Visit [HPE.com](https://www.hpe.com)

[Chat now](#)

© Copyright 2026 Hewlett Packard Enterprise Development LP. The information contained herein is subject to change without notice. The only warranties for Hewlett Packard Enterprise products and services are set forth in the express warranty statements accompanying such products and services. Nothing herein should be construed as constituting an additional warranty. Hewlett Packard Enterprise shall not be liable for technical or editorial errors or omissions contained herein.

Parts and Materials: HPE will provide HPE-supported replacement parts and materials required to maintain the covered hardware.

Parts and components that have reached their maximum supported lifetime and/or the maximum usage limitations as set forth in the manufacturer's operating manual, product quick-specs, or the technical product data sheet will not be provided, repaired, or replaced as part of these services.

All third-party marks are property of their respective owners.

Image may differ from the actual product.

[PSN1014769362HREN](#), May, 2026.

HEWLETT PACKARD ENTERPRISE

[hpe.com](https://www.hpe.com)

