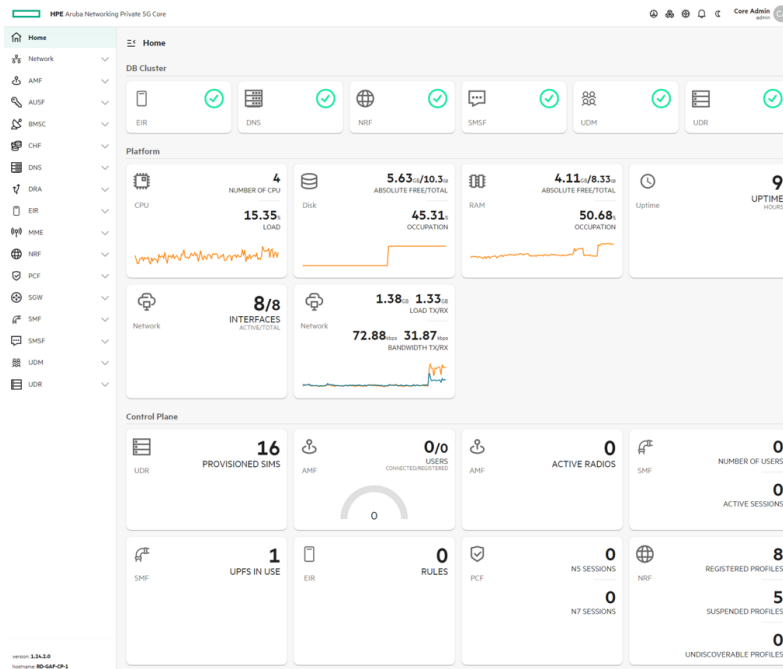


# HPE Aruba Networking Private 5G Core



## Overview

Do you need to augment your existing wireless with a 4G/5G mobile private network to power mission-critical applications, wide area coverage, or high-speed mobility? The HPE Aruba Networking Private 5G Core connects the most powerful, mission-critical networks using any 3GPP radio with combined support for both 4G and 5G standards. Designed for service provider and enterprise use, it can power scalable wireless networks that are managed the same way Wi-Fi networks are managed.

The HPE Aruba Networking Private 5G Core is highly scalable and can be deployed by service providers or enterprises for predictable and reliable quality of service for mission-critical applications, wide area coverage, high speed mobility, or additional wireless capacity. Deployment flexibility includes fully on premises, hybrid, or cloud-based options and the core can interoperate with any 3GPP compatible radio.

# Features

## **Proven 4G/5G Combined Core**

HPE Aruba Networking Private 5G Core is based on proven technology acquired from Athonet that has been developed over 15 years and adopted by more than 500 customers.

Combined software includes 4G EPC and 5G Core functions.

Can scale up to thousands of provisioned devices and large volumes of concurrent connections without adding management complexity.

## **Flexible, Open Architecture**

HPE Aruba Networking Private 5G Core uses 3GPP standards to support any radio and any use case.

Integrates with the HPE Aruba Networking Private 5G Management Dashboard for multi-tenant, role-based control or the management system of choice using REST APIs for configuration and Prometheus alerts and KPIs for fault and performance management.

Integrates with HPE Aruba Networking Private 5G Voice Services for mission-critical applications such as safety and defense.

## **Choice of Deployment Mode**

HPE Aruba Networking Private 5G Core supports 4G/5G networks that are fully on-premises, in the cloud, or hybrid with the core and RAN deployed at the edge and management in the cloud.

Core can be deployed on two or more hardware appliances for greater resiliency.

Enterprises that lack expertise or resources can opt for managed services via the HPE partner ecosystem.

# HPE Aruba Networking Services

HPE Aruba Networking services simplify and accelerate the network technology lifecycle, enabling your network to scale with better predictability and cost-effectiveness. Whether you operate your own network and need to improve your IT efficiencies, or you want to offload some of the burden, we have the services you need to reach your goals.

Learn more about what HPE Services - Aruba Networking has to offer at: [hpe.com/edge/services](https://hpe.com/edge/services)

## Support Services

Our support portfolio provides the essential support elements as well as proactive and preventive features to help you improve your team's productivity and get the most from your network. Our support customers benefit from faster issue resolution, simplified operations and efficiencies, and reduced network issues.

## Professional Services

With deep intellectual capital and purpose-built tools, our team delivers a range of standard and custom professional services designed to accelerate your value from HPE Aruba Networking technology.

### Project based services include:

- Planning, audit, and assessment
- Architecture review and design
- Deployment, migration, and knowledge transfer

### Annual subscription services include:

- Network optimization
- Intelligent Operations
- Customer Experience Management

Our [Education Services](#) allow your team to come up to speed quickly.

## GreenLake for Networking

Deliver innovative business outcomes by leveraging new ways to consume, deploy and [manage networks](#).

[For additional technical information, available models and options, please reference the QuickSpecs](#)

Visit [HPE.com](https://www.hpe.com)

[Chat now](#)

© Copyright 2026 Hewlett Packard Enterprise Development LP. The information contained herein is subject to change without notice. The only warranties for Hewlett Packard Enterprise products and services are set forth in the express warranty statements accompanying such products and services. Nothing herein should be construed as constituting an additional warranty. Hewlett Packard Enterprise shall not be liable for technical or editorial errors or omissions contained herein.

Parts and Materials: HPE will provide HPE-supported replacement parts and materials required to maintain the covered hardware.

Parts and components that have reached their maximum supported lifetime and/or the maximum usage limitations as set forth in the manufacturer's operating manual, product quick-specs, or the technical product data sheet will not be provided, repaired, or replaced as part of these services.

All third-party marks are property of their respective owners.

Image may differ from the actual product.

[PSN1014769364GREN](#), May, 2026.

HEWLETT PACKARD ENTERPRISE

[hpe.com](https://www.hpe.com)

