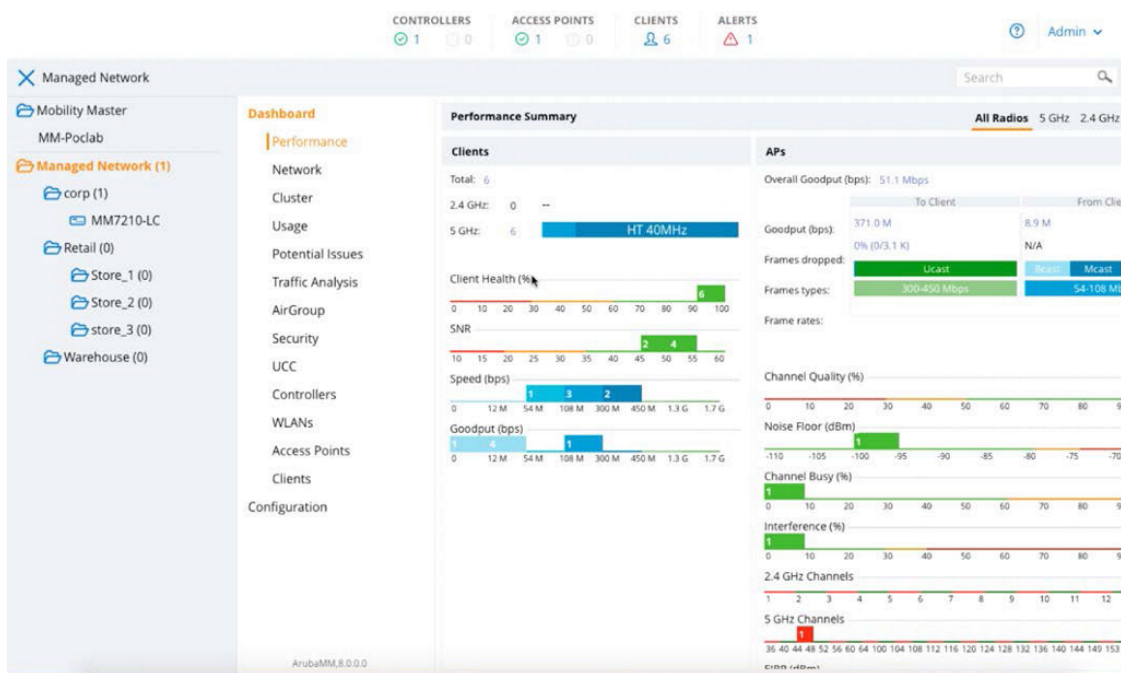


HPE Aruba Networking Mobility Controller Virtual Appliances



Что нового?

- Utilize your existing virtualization infrastructure to deploy enterprise WLAN at scale without purchasing additional hardware.
- Manage up to 16,000 concurrent users and 1,000 access points with the same functionality as the physical mobility controllers.
- Support for Wi-Fi 6 (802.11ax), Wi-Fi 6E, Wi-Fi 7, WPA3, Enhanced Open, and existing standards.
- Easily centralize the configuration of role-based access controls with built-in policy enforcement firewall for Dynamic

Обзор

[HPE Aruba Networking Mobility Controller Virtual Appliances](#) offer the functionality of a hardware controller in a cost-effective virtualized environment. They leverage your existing virtualization infrastructure and offer the same functionality as the physical mobility controllers to deliver network services that maximize Wi-Fi performance.

The HPE Aruba Networking Mobility Controller Virtual Appliance is deployed as a virtual machine (VM), residing with other VMs sharing the same existing virtualization infrastructure for operational saving. Running on HPE Aruba Networking Wireless Operating System (AOS-8), these virtual appliances can be managed by HPE Aruba Networking Mobility Controller Software for higher scale and deployed using Zero Touch Provisioning (ZTP).

Segmentation.

- Includes built-in AI-powered wireless RF optimization and provides seamless L2/L3 roaming for thousands of users or client devices.
- Simplify deployment using Zero Touch Provisioning (ZTP).

Функции

Scalable Performance

Manages up to 16,000 concurrent users and 1,000 access points and offers the same functionality as the physical mobility controllers and can be managed by the HPE Aruba Networking Mobility Conductor Software for higher scale.

HPE Aruba Networking AirMatch automates network-wide RF channels, channel width, and transmits power to enhance the highest density environments.

Seamless Layer 2 and Layer 3 roaming enables users to roam between floors, buildings or across the entire network without any re-authentication, change to their IP address, or loss of firewall state.

As part of a controller cluster managed by the HPE Aruba Networking Mobility Conductor Software, the Mobility Controller Virtual Appliances helps enhance scale, improves reliability, and enables live upgrades to reduce maintenance windows.

Can be installed on VMware ESXi™, Microsoft Hyper-V, and open-source KVM instances.

Enhanced Security

Dynamic Segmentation for granular user, device, and application policies across access points and network switches means there is no need to configure separate VLANs, ACLs, and subnets.

Enabled by the PEF license, wired and wireless user and application traffic can be tunneled to a stateful firewall on the VMC through GRE tunnels for inspection. Policies are then enforced based on user role, device type, application and location.

Application visibility is enabled by the PEF license, with Deep Packet Inspection (DPI) technology evaluating and enhancing performance and quality of service policies for over 3,000 applications.

Support for WPA3 brings stronger encryption and authentication methods, while Enhanced Open brings automatic encryption security to open networks.

Simple and Flexible Deployment

As campus and branch requirements change, additional HPE Aruba Networking Mobility Controller Virtual Appliances, memory, and compute resources can be added.

It simplifies operations by sharing licenses from a global licensing pool.

Zero Touch Provisioning (ZTP) reduces operational costs and avoids provisioning errors.

Технические характеристики

HPE Aruba Networking Mobility Controller Virtual Appliances

Гарантия

Software: 90 days, can be extended with support contract

HPE Aruba Networking Services

HPE Aruba Networking services simplify and accelerate the network technology lifecycle, enabling your network to scale with better predictability and cost-effectiveness. Whether you operate your own network and need to improve your IT efficiencies, or you want to offload some of the burden, we have the services you need to reach your goals.

Learn more about what HPE Services - Aruba Networking has to offer at: hpe.com/edge/services

Support Services

Our support portfolio provides the essential support elements as well as proactive and preventive features to help you improve your team's productivity and get the most from your network. Our support customers benefit from faster issue resolution, simplified operations and efficiencies, and reduced network issues.

Professional Services

With deep intellectual capital and purpose-built tools, our team delivers a range of standard and custom professional services designed to accelerate your value from HPE Aruba Networking technology.

Project based services include:

- Planning, audit, and assessment
- Architecture review and design
- Deployment, migration, and knowledge transfer

Annual subscription services include:

- Network optimization
- Intelligent Operations
- Customer Experience Management

Our [Education Services](#) allow your team to come up to speed quickly.

GreenLake for Networking

Deliver innovative business outcomes by leveraging new ways to consume, deploy and [manage networks](#).

[Для получения дополнительной технической информации, доступных моделей и опций обратитесь к QuickSpecs](#)

Visit HPE.com

[Чат](#)

© Hewlett Packard Enterprise Development LP, 2026 г. Информация в настоящем документе может быть изменена без предварительного уведомления. Гарантийные обязательства для продуктов и услуг Hewlett Packard Enterprise приведены только в условиях явной гарантии, прилагаемой к каждому продукту и услуге. Никакие сведения в данном документе не могут рассматриваться как дополнительные гарантийные обязательства. Hewlett Packard Enterprise не несет ответственности за технические или редакторские ошибки и упущения в данном документе.

Компоненты и материалы: Компания HPE предоставит запасные части и материалы, поддерживаемые HPE, которые требуются для обслуживания оборудования по договору.

Данная услуга не подразумевает предоставление, ремонт или замену деталей и компонентов, которые достигли своего максимального срока службы и (или) лимита использования (согласно данным руководства по эксплуатации, кратким техническим руководствам или технической документации, предоставленной производителем).

Изображение может отличаться от реального изделия.

[PSN1009439095KZRU](#), мая, 2026.

HEWLETT PACKARD ENTERPRISE

[hpe.com](#)

