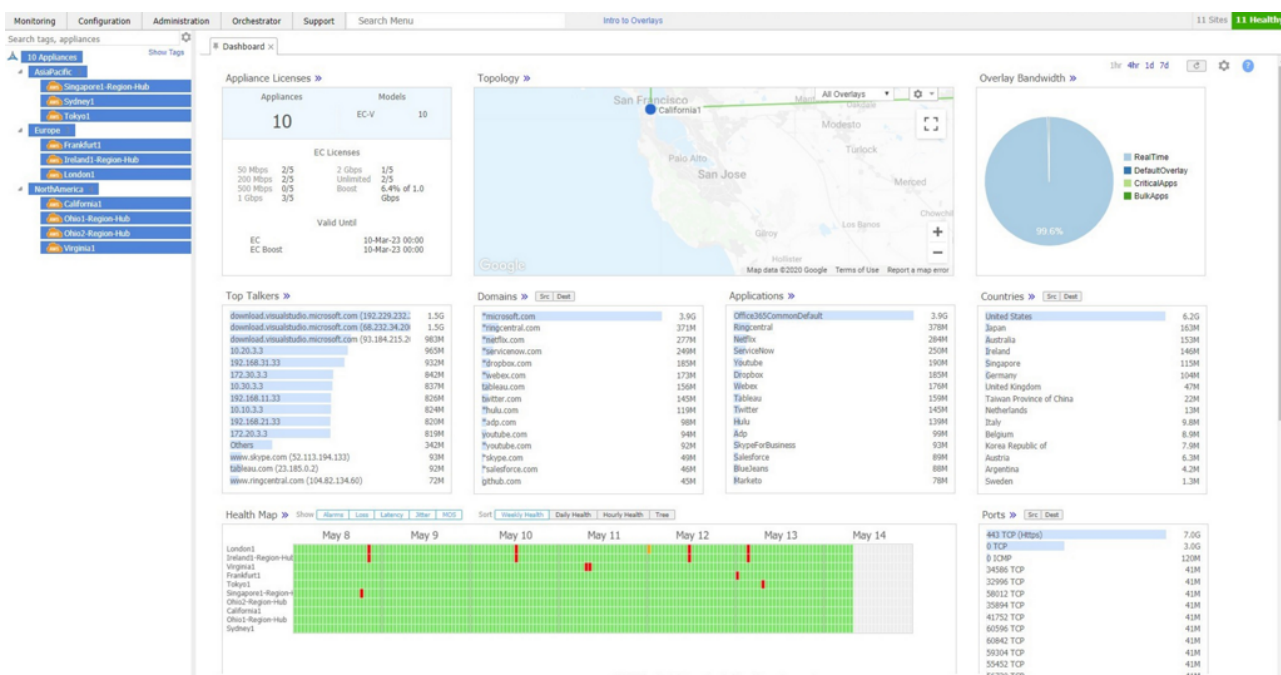


HPE Aruba Networking EdgeConnect Software

HPE Aruba Networking EdgeConnect Orchestrator-AAS S Size US Hosted 1-year Subscription E-STU (JM467AAS)



What's new

- Extra Large subscription for HPE Aruba Networking EdgeConnect SD-WAN Cloud Orchestrator and HPE Aruba Networking EdgeConnect GE Orchestrator

Overview

HPE Aruba Networking EdgeConnect SD-WAN software powers the HPE Aruba Networking EdgeConnect SD-WAN platform. It optimizes application performance and provides advanced security features, while seamlessly integrating with SASE (Secure Access Service Edge).

HPE Aruba Networking EdgeConnect SD-WAN software is available in two subscription tiers: Foundation and Advanced, in either single or multi-year increments and at multiple bandwidth tiers. The Foundation license provides essential SD-WAN feature set while the Advanced license feature is designed for higher performance including all bandwidth tiers, unlimited topology, full access to Virtual Routing and Forwarding (VRFs), Business Intent Overlays (BIOs) and Quality of Service (QoS), enhanced statistics retention, and

AppExpress monitoring and steering. Both offerings include HPE Aruba Networking EdgeConnect Cloud Orchestrator to manage the SD-WAN fabric, paired with advanced next-generation firewall capabilities.

Features

Networking

Business intent overlays: Multiple overlays may be defined to abstract the underlying physical transport services from the virtual overlays, each supporting different Quality of Service (QoS), transport, failover, and security policies.

Path conditioning: This feature provides private-line-like performance over the public internet. It includes techniques to overcome the adverse effects of dropped and outof-order packets that are common with broadband internet and MPLS connections, thus improving application performance.

High availability: Protects from hardware, software and transport failures. High availability (HA) is achieved by providing fault tolerance on both the network side (WAN) and on the equipment side using HA links.

AppExpress: Optimizes user experience for up to 50 business-critical private and software-as-a-service (SaaS) applications. AppExpress exploits SD-WAN path diversity by automatically selecting the best path for each application.

First-packet iQ: Identifies applications on the first packet to deliver trusted SaaS and web traffic directly to the internet while directing unknown or suspicious traffic to the data center firewall, enabling secure internet breakout.

Security

Next-generation firewall: Provides advanced security features such as micro-segmentation and distributed denial-of-service (DDoS) defense, as well as application and user identity awareness. It blocks malware from entering the network based on application, identity and context.

Role-based segmentation: Assigns roles to users and devices and creates role-based policies to micro-segment the network. IT teams can also define zone-based policies by creating secure zones. Moreover, HPE Aruba Networking ClearPass Policy Manager integration provides additional identity context.

DDoS defense: Detects and prevents protocol attacks such as ICMP floods and SYN floods. Using firewall protection profiles, the solution helps strict state handling and limits the number of malicious requests with actions such as rapid aging, drop excess and block source.

Automated orchestration to SSE: Automated orchestration using a drag-and-drop interface to HPE Aruba Networking SSE and third-party security service edge (SSE) solutions to create a seamless secure access service edge (SASE) architecture.

SWG service: HPE Aruba Networking EdgeConnect SD-WAN protects all network devices, including IoT, from web-based threats without the need for an SSE agent. Device traffic is routed to HPE Aruba Networking SSE through a dedicated 10 Mbps SWG bandwidth tunnel.

Advanced security features

IDS/IPS: Integrates a rule-based Intrusion Detection and Prevention System (IDS/IPS). The system can operate either in inline mode or performant mode. Threat events can be sent to an external SIEM such as Splunk to monitor real-time threats.

Adaptive DDoS: Automatically adjust DoS thresholds. Auto rate-limiting regularly calculates a new baseline for DoS thresholds based on network statistics and patterns. Smart Burst automatically allocates unused flow capacity ensuring business continuity during a DDoS attack.

DDoS analytics: Includes a comprehensive set of reports for DoS defense such as threshold violations, flow drops, denied hosts and packet counts, top talkers, and alarms such as exceeded DoS thresholds.

Smart SYN cookie: Adds intelligence to the traditional SYN cookie mechanism, optimizing performance where cookie generation can be resource intensive.

Secure web services: Web classification and reputation (also known as URL filtering) helps organizations block access to harmful, inappropriate, or illegal websites. IP reputation service provides real-time threat intelligence and global visibility into malicious IPs.

WAN Optimization (Optional)

Latency mitigation: TCP and other protocol acceleration techniques are applied to all traffic, reducing effects of latency on application performance and significantly improving application response times across the WAN.

Data reduction: Data compression and deduplication mitigates the repetitive transmission of duplicate data.

HPE Aruba Networking Services

HPE Aruba Networking services simplify and accelerate the network technology lifecycle, enabling your network to scale with better predictability and cost-effectiveness. Whether you operate your own network and need to improve your IT efficiencies, or you want to offload some of the burden, we have the services you need to reach your goals.

Learn more about what HPE Services - Aruba Networking has to offer at: hpe.com/edge/services

Support Services

Our support portfolio provides the essential support elements as well as proactive and preventive features to help you improve your team's productivity and get the most from your network. Our support customers benefit from faster issue resolution, simplified operations and efficiencies, and reduced network issues.

Professional Services

With deep intellectual capital and purpose-built tools, our team delivers a range of standard and custom professional services designed to accelerate your value from HPE Aruba Networking technology.

Project based services include:

- Planning, audit, and assessment
- Architecture review and design
- Deployment, migration, and knowledge transfer

Annual subscription services include:

- Network optimization
- Intelligent Operations
- Customer Experience Management

Our [Education Services](#) allow your team to come up to speed quickly.

GreenLake for Networking

Deliver innovative business outcomes by leveraging new ways to consume, deploy and [manage networks](#).

[For additional technical information, available models and options, please reference the QuickSpecs](#)

Visit [HPE.com](https://www.hpe.com)

[Chat now](#)

© Copyright 2026 Hewlett Packard Enterprise Development LP. The information contained herein is subject to change without notice. The only warranties for Hewlett Packard Enterprise products and services are set forth in the express warranty statements accompanying such products and services. Nothing herein should be construed as constituting an additional warranty. Hewlett Packard Enterprise shall not be liable for technical or editorial errors or omissions contained herein.

Parts and Materials: HPE will provide HPE-supported replacement parts and materials required to maintain the covered hardware.

Parts and components that have reached their maximum supported lifetime and/or the maximum usage limitations as set forth in the manufacturer's operating manual, product quick-specs, or the technical product data sheet will not be provided, repaired, or replaced as part of these services.

Image may differ from the actual product.

[PSN1014659151PHEN](#), May, 2026.

HEWLETT PACKARD ENTERPRISE

[hpe.com](https://www.hpe.com)

