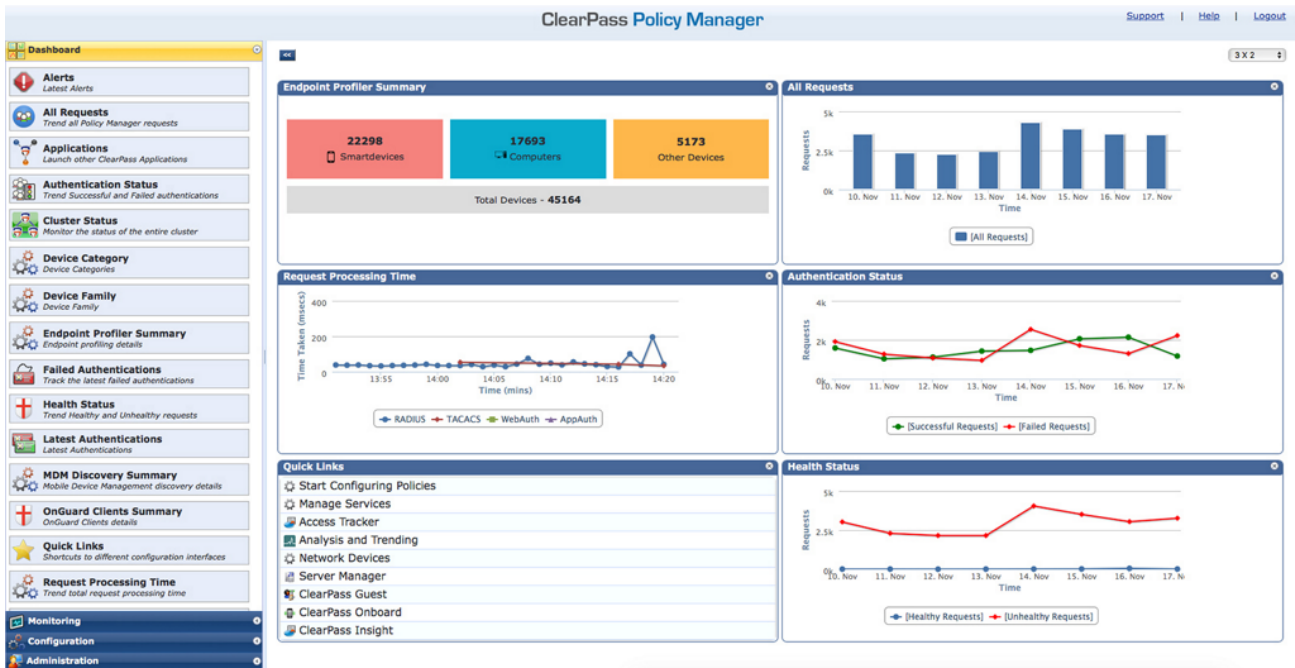


HPE Aruba Networking ClearPass Policy Manager

HPE Aruba Networking ClearPass Access Upgrade License 2500 Concurrent Endpoints E-LTU (R1U47AAE)



What's new

- New Hardware Appliances: N1000
Featuring increased RAM and conversion to SSD with support for serial console communication, ideal for remote data centers.
- New Hardware Appliances: N3000, N3001
Featuring highspeed SSD for better data replication in clustering and increased RAM to support a higher number of concurrent connections.

Overview

The HPE Aruba Networking ClearPass Policy Manager provides role- and device-based network access control for employees, contractors and guests across multi-vendor wired, wireless and VPN infrastructures. With a built-in context-based policy engine, RADIUS, TACACS+ protocol support, device profiling and comprehensive posture assessment, onboarding, and guest access options, HPE Aruba Networking ClearPass Policy Manager is unrivaled as a foundation for network security.

HPE Aruba Networking ClearPass Policy Manager supports enterprise level security with self-service capabilities for end-user convenience. Users can configure their own devices for enterprise use or internet access. This

- Intuitive policy configuration templates and visibility troubleshooting tools.
 - Supports multiple authentication/authorization sources (AD, LDAP, SQL dB) within one service.
 - Self-service device onboarding with built-in certificate authority (CA) for bring your own device (BYOD).
 - Role-based network access enforcement for multi-vendor Wi-Fi, wired and VPN networks with industry-leading performance, scalability, high availability and load balancing.
- comprehensive and scalable policy management platform that goes beyond traditional authentication, authorization and accounting (AAA) solutions to deliver extensive enforcement capabilities for IT-owned and bring-your-own-device (BYOD) security.

Features

Enterprise Level Security for Mobile Environments

HPE Aruba Networking ClearPass Policy Manager is a wired and wireless, multi-vendor policy platform to centrally enforce enterprise-grade access security. Granular policy enforcement is based on a user's role, device type, device health, location, and time of day.

Offers extensive multi-vendor wireless, wired and VPN infrastructure support which enables IT to easily rollout enterprise level security mobility policies across the enterprise.

Deployment scalability supports tens of thousands of devices and authentications which surpasses the capabilities offered by legacy authentication, authorization and accounting (AAA) solutions.

The HPE Aruba Networking ClearPass Policy Manager is available as hardware or as a virtual appliance.

Advanced Policy Management

With HPE Aruba Networking ClearPass Policy Manager, organizations can deploy wired and wireless networking using standards-based 802.1X enforcement for strong authentication.

HPE Aruba Networking ClearPass Guest simplifies workflow processes so that receptionists, employees and other non-IT staff can create temporary guest accounts for WAP2 Wi-Fi and wired internet access.

The optional HPE Aruba Networking ClearPass Onboard Software add-on provides automated provisioning of Windows, Mac OS X, iOS, Android, Chromebook, and Ubuntu devices via a user driven self-guided portal.

HPE Aruba Networking ClearPass OnGuard Software, an optional add-on, leverages persistent and dissolvable agents, to perform advanced endpoint posture assessments over wireless, wired and VPN connections.

Stronger, Together – Security in Depth

With over 140 security technology partners including PaloAlto Networks, Duo and Carbon Black, HPE Aruba Networking ClearPass Policy Manager safeguards your business from the inside, acting against what the perimeter does not see.

Multi-vendor is in our culture. Delivering enterprise infrastructure, securing wired and wireless, mobile and fixed assets, Corporate, IOT and bring your own device (BYOD) environments.

Technical specifications	HPE Aruba Networking ClearPass Access Upgrade License 2500 Concurrent Endpoints E-LTU
Product Number	R1U47AAE
Differentiator	Perpetual license
Certifications	FIPS 140-2 level 1 certificate 4473 Common Criteria NDcPPv2.2e NIAP Common Criteria NDcPPv2.1+AUTHSVR 1.0 VID 11324 IPv6 Ready (including USGv6 r-1)
Warranty	Warranty: 1-year on hardware parts and 90 days on software, both can be extended with support contract. See the warranty duration .
Input voltage	100/240 VAC auto-selecting
Mounting	Rackmount

HPE Aruba Networking Services

HPE Aruba Networking services simplify and accelerate the network technology lifecycle, enabling your network to scale with better predictability and cost-effectiveness. Whether you operate your own network and need to improve your IT efficiencies, or you want to offload some of the burden, we have the services you need to reach your goals.

Learn more about what HPE Services - Aruba Networking has to offer at: hpe.com/edge/services

Support Services

Our support portfolio provides the essential support elements as well as proactive and preventive features to help you improve your team's productivity and get the most from your network. Our support customers benefit from faster issue resolution, simplified operations and efficiencies, and reduced network issues.

Professional Services

With deep intellectual capital and purpose-built tools, our team delivers a range of standard and custom professional services designed to accelerate your value from HPE Aruba Networking technology.

Project based services include:

- Planning, audit, and assessment
- Architecture review and design
- Deployment, migration, and knowledge transfer

Annual subscription services include:

- Network optimization
- Intelligent Operations
- Customer Experience Management

Our [Education Services](#) allow your team to come up to speed quickly.

GreenLake for Networking

Deliver innovative business outcomes by leveraging new ways to consume, deploy and [manage networks](#).

[For additional technical information, available models and options, please reference the QuickSpecs](#)

Visit [HPE.com](https://www.hpe.com)

[Chat now](#)

© Copyright 2026 Hewlett Packard Enterprise Development LP. The information contained herein is subject to change without notice. The only warranties for Hewlett Packard Enterprise products and services are set forth in the express warranty statements accompanying such products and services. Nothing herein should be construed as constituting an additional warranty. Hewlett Packard Enterprise shall not be liable for technical or editorial errors or omissions contained herein.

Parts and Materials: HPE will provide HPE-supported replacement parts and materials required to maintain the covered hardware.

Parts and components that have reached their maximum supported lifetime and/or the maximum usage limitations as set forth in the manufacturer's operating manual, product quick-specs, or the technical product data sheet will not be provided, repaired, or replaced as part of these services.

Image may differ from the actual product.

[PSN1011423233NOEN](#), May, 2026.

HEWLETT PACKARD ENTERPRISE

[hpe.com](https://www.hpe.com)

