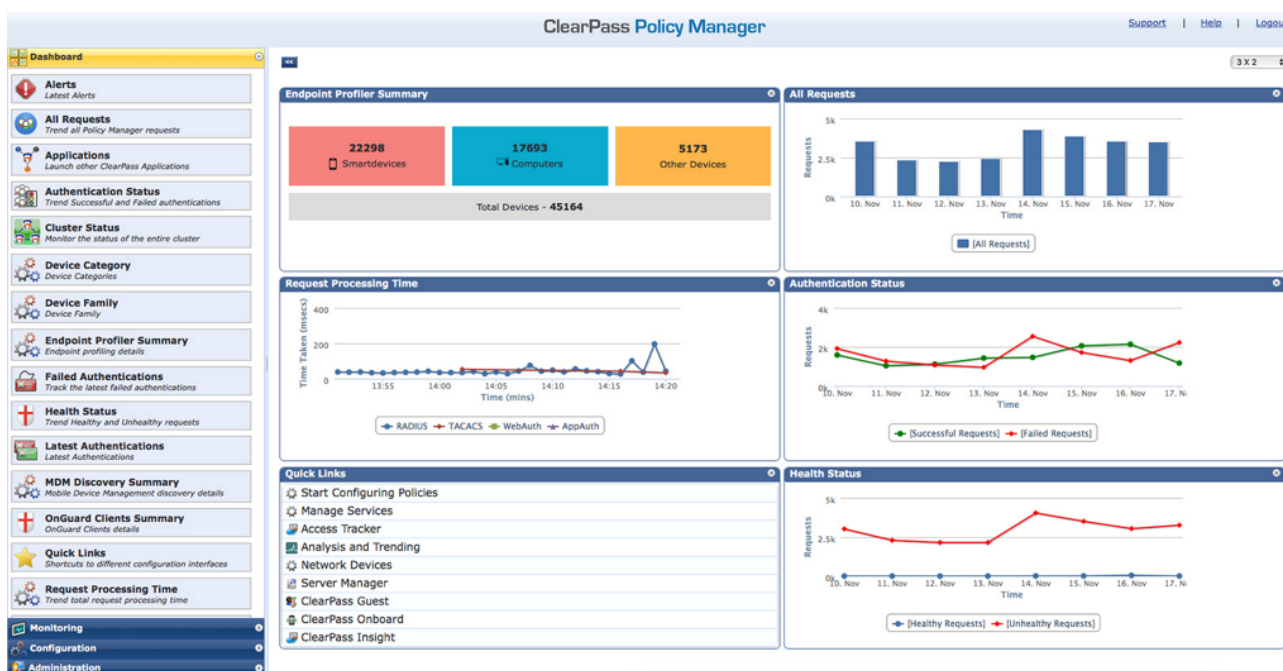


HPE Aruba Networking ClearPass Onboard Software

HPE Aruba Networking ClearPass - Onboard License 100K Users 5-year Subscription E-STU (JZ471AAE)



What's new

- Automated policy management: With HPE Aruba Networking ClearPass Onboard Software, IT can use context collected during onboarding to enforce device type and ownership-based network access policies.
- Flexible workflow options: The onboard configuration process can be managed through IT-enabled and sponsor-required workflows. User authentication can prompt for AD or cloud identity credentials.

Overview

HPE Aruba Networking ClearPass Onboard Software lets BYOD and IT-issued devices connect safely to your network in compliance with security mandates. It automatically configures and provisions mobile devices and enables them to securely connect to enterprise networks.

ClearPass Onboard Software allows users to configure devices for use on secure networks all on their own, enabling full and limited access based on roles, device type, and security posture. Unique device certificates eliminate the need for users to repeatedly enter login credentials throughout the day.

- Customized device provisioning: The administrator portal allows IT to configure device certificates and trust details, network access, VPN, and health checks and authentication protocols for networks.
- Advanced onboarding capabilities: The distribution of published device credentials through a built-in CA of ClearPass Onboard safeguards organizations to adopt BYOD without implementing external CA.
- Revocation of unique certificates: Easy-to-use search and menu-driven capabilities help ensure the rapid revocation and deletion of certificates for specific mobile devices.

Features

Flexible Workflow Options

The HPE Aruba Networking ClearPass Onboard Software configuration process can be managed via sponsor and non-sponsor required workflows.

User authentication can prompt for active directory or social login credentials.

Built-in Certificate Authority For BYOD

HPE Aruba Networking ClearPass Onboard Software Certificate Authority (CA) provides the option to utilize certificate management without the need to make changes to an internal public key infrastructure (PKI) or active directory (AD).

ClearPass Onboard Software generates certificates requested by third-party applications – mobile device management (MDM) or enterprise mobility management (EMM) – through SCEP and EST (RFC 7030) protocols.

Secure Pre-authorized Access Credentials

HPE Aruba Networking ClearPass Onboard Software enables users to self-register and securely onboard multiple devices.

Active Directory and social login credential authentication supported.

HPE Aruba Networking Services

HPE Aruba Networking services simplify and accelerate the network technology lifecycle, enabling your network to scale with better predictability and cost-effectiveness. Whether you operate your own network and need to improve your IT efficiencies, or you want to offload some of the burden, we have the services you need to reach your goals.

Learn more about what HPE Services - Aruba Networking has to offer at: hpe.com/edge/services

Support Services

Our support portfolio provides the essential support elements as well as proactive and preventive features to help you improve your team's productivity and get the most from your network. Our support customers benefit from faster issue resolution, simplified operations and efficiencies, and reduced network issues.

Professional Services

With deep intellectual capital and purpose-built tools, our team delivers a range of standard and custom professional services designed to accelerate your value from HPE Aruba Networking technology.

Project based services include:

- Planning, audit, and assessment
- Architecture review and design
- Deployment, migration, and knowledge transfer

Annual subscription services include:

- Network optimization
- Intelligent Operations
- Customer Experience Management

Our [Education Services](#) allow your team to come up to speed quickly.

GreenLake for Networking

Deliver innovative business outcomes by leveraging new ways to consume, deploy and [manage networks](#).

[For additional technical information, available models and options, please reference the QuickSpecs](#)

Visit [HPE.com](https://www.hpe.com)

[Chat now](#)

© Copyright 2026 Hewlett Packard Enterprise Development LP. The information contained herein is subject to change without notice. The only warranties for Hewlett Packard Enterprise products and services are set forth in the express warranty statements accompanying such products and services. Nothing herein should be construed as constituting an additional warranty. Hewlett Packard Enterprise shall not be liable for technical or editorial errors or omissions contained herein.

Parts and Materials: HPE will provide HPE-supported replacement parts and materials required to maintain the covered hardware.

Parts and components that have reached their maximum supported lifetime and/or the maximum usage limitations as set forth in the manufacturer's operating manual, product quick-specs, or the technical product data sheet will not be provided, repaired, or replaced as part of these services.

Image may differ from the actual product.

[PSN1010354068WWEN](#), June, 2026.

HEWLETT PACKARD ENTERPRISE

[hpe.com](https://www.hpe.com)

