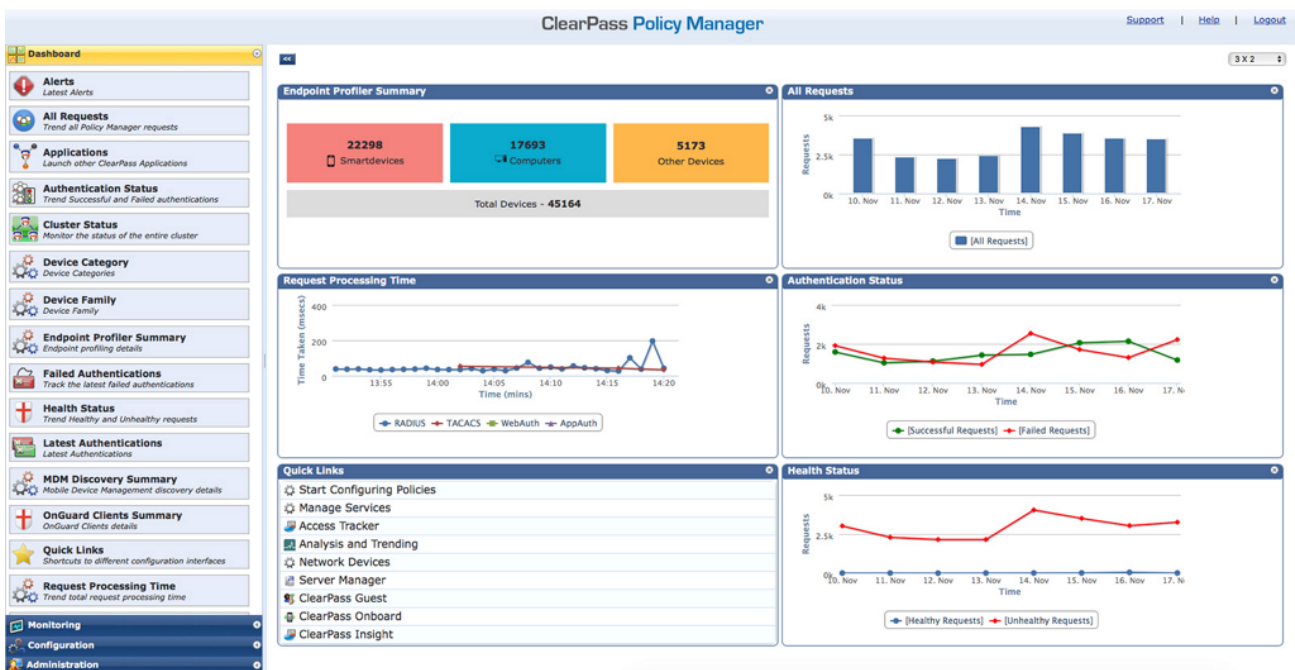


HPE Aruba Networking ClearPass OnGuard Software

HPE Aruba Networking ClearPass - OnGuard License 100K Users 3-year Subscription E-STU (JZ498AAE)



What's new

- Flexible deployment options: ClearPass OnGuard Software can be deployed and configured in a variety of ways including: an agentless configuration, dissolvable agents, or OnGuard agent.
- Automatic remediation: If unhealthy devices do not meet compliance, the user receives a message about the endpoint status and instructions on how to achieve compliance if autoremediation is not used.

Overview

HPE Aruba Networking ClearPass OnGuard Software agents perform advanced endpoint posture assessments on leading computer operating systems to ensure compliance is met before devices connect.

Running on the HPE Aruba Networking ClearPass Policy Manager platform, the advanced [network access control](#) (NAC) framework in ClearPass OnGuard Software offers exceptional safeguards against vulnerabilities. In addition to anti-virus, anti-spyware and personal firewall audits performed by traditional NAC products, ClearPass OnGuard Software agents can perform additional posture and health checks to ensure a greater level of endpoint compliance

- IT-managed and BYOD endpoint compliance OnGuard Persistent and Dissolvable Agents can be used together in environments where endpoints are owned by the organization, employees, and visitors.
- To simplify troubleshooting, endpoint control, and compliance reporting, ClearPass Policy Manager allows IT to centrally manage health-check settings and policies. Complete endpoint visibility:
- Real-time endpoint compliance: Depending on operating system type, ClearPass OnGuard Software performs a range of posture and health checks.

Features

IT-managed and BYOD Endpoint Compliance

HPE Aruba Networking ClearPass OnGuard Software persistent and dissolvable agents can be used together in environments where endpoints are owned by the organization, employees and visitors.

This ensures that all devices are assessed and granted proper privileges before accessing the network.

Automatic Remediation

HPE Aruba Networking ClearPass OnGuard Software sends users instructions on how to achieve compliance when auto-remediation is not used if unhealthy endpoints do not meet compliance requirements.

ClearPass persistent agents provide the same message and remediation capabilities for 802.1X and combined environments.

Complete Endpoint Compliance

HPE Aruba Networking ClearPass OnGuard Software offers the ability to centrally managed health-check settings and policies to simplify troubleshooting, endpoint control and compliance reporting.

Views of ClearPass OnGuard Software activity, including user and device data show information about each device that connects using OnGuard agents.

Technical specifications	HPE Aruba Networking ClearPass - OnGuard License 100K Users 3-year Subscription E-STU
Product Number	JZ498AAE
Differentiator	Electronic license enabling a subscription to ClearPass OnGuard for 3-year, 100,000 endpoints

HPE Aruba Networking Services

HPE Aruba Networking services simplify and accelerate the network technology lifecycle, enabling your network to scale with better predictability and cost-effectiveness. Whether you operate your own network and need to improve your IT efficiencies, or you want to offload some of the burden, we have the services you need to reach your goals.

Learn more about what HPE Services - Aruba Networking has to offer at: hpe.com/edge/services

Support Services

Our support portfolio provides the essential support elements as well as proactive and preventive features to help you improve your team's productivity and get the most from your network. Our support customers benefit from faster issue resolution, simplified operations and efficiencies, and reduced network issues.

Professional Services

With deep intellectual capital and purpose-built tools, our team delivers a range of standard and custom professional services designed to accelerate your value from HPE Aruba Networking technology.

Project based services include:

- Planning, audit, and assessment
- Architecture review and design
- Deployment, migration, and knowledge transfer

Annual subscription services include:

- Network optimization
- Intelligent Operations
- Customer Experience Management

Our [Education Services](#) allow your team to come up to speed quickly.

GreenLake for Networking

Deliver innovative business outcomes by leveraging new ways to consume, deploy and [manage networks](#).

[For additional technical information, available models and options, please reference the QuickSpecs](#)

Visit [HPE.com](https://www.hpe.com)

[Chat now](#)

© Copyright 2026 Hewlett Packard Enterprise Development LP. The information contained herein is subject to change without notice. The only warranties for Hewlett Packard Enterprise products and services are set forth in the express warranty statements accompanying such products and services. Nothing herein should be construed as constituting an additional warranty. Hewlett Packard Enterprise shall not be liable for technical or editorial errors or omissions contained herein.

Parts and Materials: HPE will provide HPE-supported replacement parts and materials required to maintain the covered hardware.

Parts and components that have reached their maximum supported lifetime and/or the maximum usage limitations as set forth in the manufacturer's operating manual, product quick-specs, or the technical product data sheet will not be provided, repaired, or replaced as part of these services.

Image may differ from the actual product.

[PSN1010354151PLEN](#), June, 2026.

HEWLETT PACKARD ENTERPRISE

[hpe.com](https://www.hpe.com)

