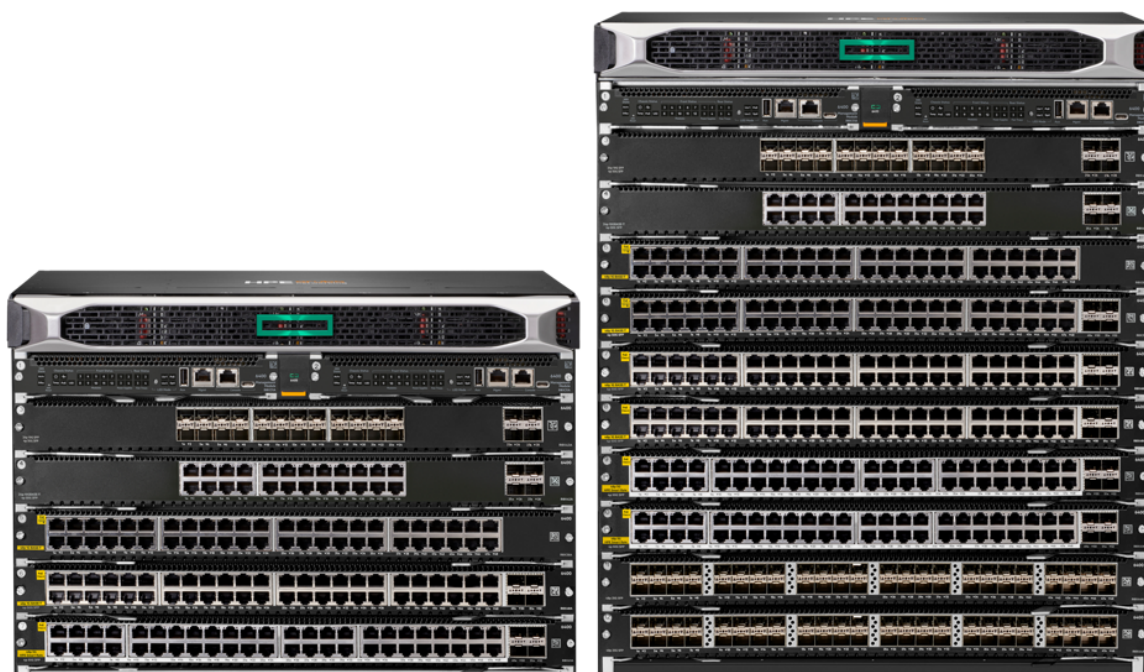


HPE Aruba Networking CX 6400 Switch Series



What's new

- High-performance modular Layer 3 switches with BGP, EVPN, VXLAN, VRF, and OSPF with robust security, MACsec encryption, and QoS while delivering up to 28 Tbps in non-blocking bandwidth
- High availability with industry-leading HPE Aruba Networking Virtual Switching Extension (VSX) and redundant power supplies and fans
- Full density HPE Smart Rate (1/2.5/5GbE) multi-gigabit, 60W PoE, and SFP+ modules
- High-speed, non-blocking 1GbE, 10GbE, 25GbE, 40GbE, and 100GbE with intelligent monitoring, visibility and remediation with the HPE Aruba Networking CX Network Analytics

Overview

The HPE Aruba Networking CX 6400 Switch Series is a modern, flexible, and intelligent family of modular switches ideal for enterprise campus and data center deployments. With a cloud-native design that combines a fully programmable OS with HPE Aruba Networking CX Network Analytics Engine, the CX 6400 series extends industry-leading monitoring and troubleshooting across the network.

Powerful Gen7 ASIC architecture delivers fast, future-ready non-blocking performance. HPE Aruba Networking Virtual Switching Extension (VSX) brings high availability and enables fast, uninterrupted upgrades. Support for HPE Aruba Networking Switch Multi-Edit Software and the HPE Aruba Networking CX Mobile App validates configurations and simplify deployment. This series offers 5 and 10-slot compact chassis, a choice of line rate interfaces including 25GbE, 100GbE, and full-density 60W Power over Ethernet (PoE) with HPE Smart Rate multi-gigabit Ethernet ideal for access, aggregation and core deployments.

Engine

- Manage through single pane of glass with HPE Aruba Networking Central across wired, wireless, and WAN
- Dynamic segmentation enables enhanced security and simple access for users and Internet of Things (IoT) and leverages TLS-encrypted traffic analytics

Features

Automation and analytics

The CX 6400 series delivers unparalleled visibility with built-in analytics for real-time monitoring and troubleshooting to help fix problems faster. The HPE Aruba Networking CX Network Analytics Engine automatically interrogates and analyzes events that can impact network health.

Advanced telemetry and automation provide the ability to easily identify and troubleshoot network, system, application, and security-related issues easily, through the use of Python agents and REST APIs.

The time series database (TSDB) stores configuration and operational state data, making it available to quickly resolve network issues.

High Availability and performance

The HPE Aruba Networking CX 6400 Switch Series uses a fully distributed architecture with Gen7 ASICs that deliver very low latency, increased packet buffering, and adaptive power consumption. All switching and routing are wire-speed to meet the demands of bandwidth-intensive applications.

The CX 6400 series features high-speed, non-blocking 1GbE, 10 GbE, 25GbE, 40GbE, and 100GbE for scalable connectivity.

The ability to maintain a synchronous state across dual control planes allows a simplified carrier-class high-availability solution called HPE Aruba Networking Virtual Switching Extension (VSX) that enables a distributed architecture, which is available during upgrades or control plane events.

High-performance and versatile platform supports non-blocking 1GbE, 10GbE, 25GbE, 40GbE, and 100GbE connections, and high-density connectivity for aggregation with up to 480 ports of HPE Smart Rate multi-gigabit (1/2.5/5GbE) with 60W PoE for a total of 28,880W of PoE.

Smarter segmentation

The HPE Aruba Networking CX 6400 Switch Series supports dynamic segmentation that automatically applies and enforces user, device, and application-aware policies on HPE Aruba Networking wired and wireless infrastructures.

Automated device profiling, role-based access control, and Layer 7 firewall features deliver enhanced visibility and performance for a better overall experience for both IT and end-users alike.

Switch-to-switch tunnels enable scalable multi-tenancy support with VXLAN to VRF mapping, while allowing policy application through user roles.

Automated configuration and management

HPE Aruba Networking Multi-edit Software introduces automation that allows for rapid networkwide changes, and helps ensure policy conformance post network updates. Intelligent capabilities include search, edit, validation (including conformance checking), deployment and audit features.

HPE Aruba Networking Central is an AI-powered cloud and on-premises solution that simplifies operations, optimizes performance, and boosts troubleshooting. HPE Aruba Networking Central manages switching, WLAN, and SD-WAN—and scales from the smallest business to the largest enterprise.

An "easy-to-use" mobile app simplifies connecting and managing CX 6400 switches for any size project. Switch information can also be imported into HPE Aruba Networking Switch MultiEdit Software for simplified configuration management and to continuously validate the conformance of configurations

Technical specifications		HPE Aruba Networking CX 6400 Switch Series	
Power consumption		ROX35A PSU: 1800W at 200–240 VAC, 1100W at 110–127 VAC ROX36A PSU: 3000W at 200–240 VAC, 1500W at 110–127 VAC	
Input voltage		ROX35A and ROX36A PSUs: 110–127/200–240 VAC	
Ports		High speed, non-blocking 1/10/25/40/50/100GbE ports 10 I/O module slots maximum depending on model	
Latency		1G: 5.32 µSec 10G: 1.48 µSec 25G: 2.78 µSec 40G: 1.31 µSec 100G: 1.42 µSec	
Switching capacity		Up to 28 Tbps, depending on model and configuration	
Stacking capabilities		Yes	
Throughput		Up to 20 Bpps, depending on model and configuration	
Memory and processor		<p>CPU Management Module: Quad-core Arm® Cortex™ A72 at 1.8 GHz Line Cards: Dual-core Arm® Cortex™ A72 at 1.8 GHz (ROX38A-ROX45A and ROX38B-ROX40B) Line Cards: Quad-core Arm® Cortex™ A72 at 1.8 GHz (ROX38C-ROX45C, SOE48A, S1T83A)</p> <p>Memory and flash Management Module: 16 GB DDR4 ECC memory; 32 GB eMMC Flash memory Line Cards: 4 GB DDR4 memory (ROX38A-ROX45A and ROX38B-ROX40B) Line Cards: 8 GB DDR4 memory (ROX38C-ROX45C, SOE48A, S1T83A)</p>	
Power supply		Power supply units are not included; order separately. Supports four modular front-serviceable power supplies with removable rear-serviceable power cord inlet adapters. Supported power supplies: ROX35A, ROX36A. PoE available will be dependent on the number of management modules, line cards, fan trays and the number of power supplies used. Power supplies not included; order separately.	
PoE capability		Supports PoE standards IEEE 802.3af, 802.3at, 802.3bt (up to 90W)	
Management features		1 x RJ-45 console port 1 x USB-C console port 1 x OOBM port 1 x USB Type-A host port HPE Aruba Networking Management Software (AirWave) HPE Aruba Networking Central HPE Aruba Networking Switch Multi-Edit Software HPE Aruba Networking CX Mobile App Command-line interface SNMP v2c/v3 RMON	
Operating temperature		32°F to 113°F (0°C to 45°C), up to 5,000 feet 32°F to 104°F (0°C to 40°C), 5,001 to 10,000 feet 1°C de-rating per 1,000 feet above 5,000 feet	

Technical specifications	HPE Aruba Networking CX 6400 Switch Series
Weight	53.5 kg, maximum, depending on model
Product dimensions (metric)	52.88 x 44.26 x 44.85 cm, maximum, depending on model
Warranty	Limited lifetime warranty. See the warranty duration .

SKU comparison

	HPE Aruba Networking CX 6405 v2 Switch (ROX26C)	HPE Aruba Networking CX 6410 v2 Switch (ROX27C)
Differentiator	1 x CX 6405 v2 chassis (ROX24C) 1 x management module (ROX31A) 2 x fan trays (ROX32A); 5 open module slots Supports any of the following line cards in the open slots: ROX38B, ROX39B, ROX40B, ROX41A, ROX42A, ROX43A, ROX44A, ROX45A, ROX38C, ROX39C, ROX40C, ROX41C, ROX42C, ROX43C, ROX44C, ROX45C, SOE48A, S1T83A	1 x 6410 v2 chassis (ROX25C) 1 x management module (ROX31A) 4 x fan trays (ROX32A); 10 open module slots Supports any of the following line cards in the open slots: ROX38B, ROX39B, ROX40B, ROX41A, ROX42A, ROX43A, ROX44A, ROX45A, ROX38C, ROX39C, ROX40C, ROX41C, ROX42C, ROX43C, ROX44C, ROX45C, SOE48A, S1T83A
Power consumption	ROX35A PSU: 1800W at 200–240 VAC, 1100W at 110–127 VAC ROX36A PSU: 3000W at 200–240 VAC, 1500W at 110–127 VAC	ROX35A PSU: 1800W at 200–240 VAC, 1100W at 110–127 VAC ROX36A PSU: 3000W at 200–240 VAC, 1500W at 110–127 VAC
Input voltage	ROX35A and ROX36A PSUs: 110–127/200–240 VAC	ROX35A and ROX36A PSUs: 110–127/200–240 VAC
Ports	High speed, non-blocking 1/10/25/40/50/100GbE ports 10 I/O module slots maximum depending on model	High speed, non-blocking 1/10/25/40/50/100GbE ports 10 I/O module slots maximum depending on model
Latency	1G: 5.32 Sec 10G: 1.48 Sec 25G: 2.78 Sec 40G: 1.31 Sec 100G: 1.42 Sec	1G: 5.32 Sec 10G: 1.48 Sec 25G: 2.78 Sec 40G: 1.31 Sec 100G: 1.42 Sec
Switching capacity	14 Tbps	28 Tbps
Stacking capabilities	Yes	Yes
Throughput	Up to 20 Bpps, depending on model and configuration	Up to 20 Bpps, depending on model and configuration
Memory and processor	CPU Management Module: Quad-core Arm® Cortex™ A72 at 1.8 GHz Line Cards: Dual-core Arm® Cortex™ A72 at 1.8 GHz (ROX38AROX45A and ROX38BROX40B) Line Cards: Quad-core Arm® Cortex™ A72 at 1.8 GHz (ROX38CROX45C, SOE48A, S1T83A) Memory and flash Management Module: 16 GB DDR4 ECC memory; 32 GB eMMC Flash memory Line Cards: 4 GB DDR4 memory (ROX38AROX45A and ROX38BROX40B) Line Cards: 8 GB DDR4 memory (ROX38CROX45C, SOE48A, S1T83A)	CPU Management Module: Quad-core Arm® Cortex™ A72 at 1.8 GHz Line Cards: Dual-core Arm® Cortex™ A72 at 1.8 GHz (ROX38AROX45A and ROX38BROX40B) Line Cards: Quad-core Arm® Cortex™ A72 at 1.8 GHz (ROX38CROX45C, SOE48A, S1T83A) Memory and flash Management Module: 16 GB DDR4 ECC memory; 32 GB eMMC Flash memory Line Cards: 4 GB DDR4 memory (ROX38AROX45A and ROX38BROX40B) Line Cards: 8 GB DDR4 memory (ROX38CROX45C, SOE48A, S1T83A)

	HPE Aruba Networking CX 6405 v2 Switch (ROX26C)	HPE Aruba Networking CX 6410 v2 Switch (ROX27C)
Power supply	Power supply units are not included; order separately. Supports four modular frontserviceable power supplies with removable rearserviceable power cord inlet adapters. Supported power supplies: ROX35A, ROX36A. PoE available will be dependent on the number of management modules, line cards, fan trays and the number of power supplies used. Power supplies not included; order separately.	Power supply units are not included; order separately. Supports four modular frontserviceable power supplies with removable rearserviceable power cord inlet adapters. Supported power supplies: ROX35A, ROX36A. PoE available will be dependent on the number of management modules, line cards, fan trays and the number of power supplies used. Power supplies not included; order separately.
PoE capability	Supports PoE standards IEEE 802.3af, 802.3at, 802.3bt (up to 90W)	Supports PoE standards IEEE 802.3af, 802.3at, 802.3bt (up to 90W)
Management features	<ul style="list-style-type: none"> 1 x RJ45 console port 1 x USBC console port 1 x OOBM port 1 x USB Type-A host port <p>HPE Aruba Networking Management Software (AirWave) HPE Aruba Networking Central HPE Aruba Networking Switch Multi-Edit Software HPE Aruba Networking CX Mobile App Command-line interface SNMP v2c/v3 RMON</p>	<ul style="list-style-type: none"> 1 x RJ45 console port 1 x USBC console port 1 x OOBM port 1 x USB Type-A host port <p>HPE Aruba Networking Management Software (AirWave) HPE Aruba Networking Central HPE Aruba Networking Switch Multi-Edit Software HPE Aruba Networking CX Mobile App Command-line interface SNMP v2c/v3 RMON</p>
Operating temperature	32°F to 113°F (0°C to 45°C), up to 5,000 feet 32°F to 104°F (0°C to 40°C), 5,001 to 10,000 feet 1°C derating per 1,000 feet above 5,000 feet	32°F to 113°F (0°C to 45°C), up to 5,000 feet 32°F to 104°F (0°C to 40°C), 5,001 to 10,000 feet 1°C derating per 1,000 feet above 5,000 feet
Warranty	Limited lifetime warranty. See the warranty duration.	Limited lifetime warranty. See the warranty duration.

HPE Aruba Networking Services

HPE Aruba Networking services simplify and accelerate the network technology lifecycle, enabling your network to scale with better predictability and cost-effectiveness. Whether you operate your own network and need to improve your IT efficiencies, or you want to offload some of the burden, we have the services you need to reach your goals.

Learn more about what HPE Services - Aruba Networking has to offer at: hpe.com/edge/services

Support Services

Our support portfolio provides the essential support elements as well as proactive and preventive features to help you improve your team's productivity and get the most from your network. Our support customers benefit from faster issue resolution, simplified operations and efficiencies, and reduced network issues.

Professional Services

With deep intellectual capital and purpose-built tools, our team delivers a range of standard and custom professional services designed to accelerate your value from HPE Aruba Networking technology.

Project based services include:

- Planning, audit, and assessment
- Architecture review and design
- Deployment, migration, and knowledge transfer

Annual subscription services include:

- Network optimization
- Intelligent Operations
- Customer Experience Management

Our [Education Services](#) allow your team to come up to speed quickly.

GreenLake for Networking

Deliver innovative business outcomes by leveraging new ways to consume, deploy and [manage networks](#).

[For additional technical information, available models and options, please reference the QuickSpecs](#)

Visit [HPE.com](https://www.hpe.com)

[Chat now](#)

© Copyright 2026 Hewlett Packard Enterprise Development LP. The information contained herein is subject to change without notice. The only warranties for Hewlett Packard Enterprise products and services are set forth in the express warranty statements accompanying such products and services. Nothing herein should be construed as constituting an additional warranty. Hewlett Packard Enterprise shall not be liable for technical or editorial errors or omissions contained herein.

Parts and Materials: HPE will provide HPE-supported replacement parts and materials required to maintain the covered hardware.

Parts and components that have reached their maximum supported lifetime and/or the maximum usage limitations as set forth in the manufacturer's operating manual, product quick-specs, or the technical product data sheet will not be provided, repaired, or replaced as part of these services.

Arm is a registered trademark of Arm Limited. All third-party marks are property of their respective owners.

Image may differ from the actual product.

[PSN1012138126DKEN](#), June, 2026.

HEWLETT PACKARD ENTERPRISE

[hpe.com](https://www.hpe.com)

