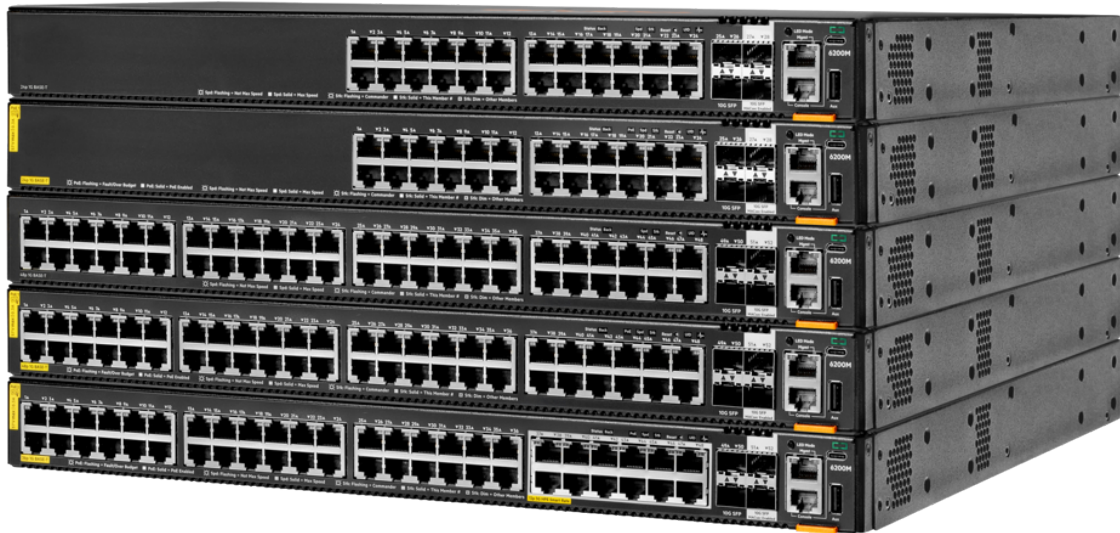


HPE Aruba Networking CX 6200 Switch Series

HPE Aruba Networking CX 6200M 36G 12SR5 Class6 PoE 4SFP+ Switch (R8Q71A)



What's new

- Enterprise-class connectivity with support for ACLs, robust QoS, and common protocols such as static and Access OSPF routing.
- Scalability with 8 member VSF stacking. 24 and 48-port fixed and modular switch models can stack together for up to 384 ports.
- Models include modular switches with 1/10GbE uplinks, LRM, and MACSec 256,

Overview

The HPE Aruba Networking CX 6200 Switch Series is a next-gen family of stackable access switches ideal for enterprise branch offices, campuses, and SMB networks. With a cloud-centric design that combines a fully programmable OS with the HPE Aruba Network Analytics Engine, the HPE Aruba Networking CX 6200 extends industry-leading monitoring and troubleshooting capabilities to the access layer. Support of Aruba NetEdit and the Aruba CX Mobile App verify that configurations are flawless and easy to deploy.

Make your network ready for tomorrow's unpredictable demands with a powerful Aruba Gen7 ASIC architecture to deliver fast, non-blocking performance. Aruba Virtual Stacking Framework (VSF) allows for stacking

fixed switches with either 1/10GbE SFP+ or 1GbE SFP uplinks, and options that support 30W to 60W of PoE per port.

- Intelligent monitoring and visibility via Aruba Network Analytics Engine. Aruba NetEdit support for automation, configuration and verification. One touch deployment using the Aruba CX Mobile App.
- Aruba Dynamic Segmentation enables enhanced security and simple access for users and IoT.
- Flexible, modular switch models support hot-swappable, redundant power supplies and fans for enhanced resiliency.

of up to 8 switches, providing scale and simplified management. This series includes fixed (CX 6200F) and modular (CX 6200M) switches with built-in high speed uplinks and up to 1440W of PoE to support IoT devices such as security cameras and wireless APs.

Features

Automation and Analytics

The HPE Aruba Networking CX 6200 Switch Series delivers unparalleled visibility with built-in analytics for real-time monitoring and troubleshooting to help fix problems faster. The Aruba Network Analytics Engine (NAE) automatically interrogates and analyzes events that can impact network health.

Advanced telemetry and automation provide the ability to easily identify and troubleshoot network, system, application, and security related issues easily through the use of Python agents and REST APIs.

The Time Series Database (TSDB) stores configuration and operational state data, making it available to quickly resolve network issues.

Aruba NetEdit introduces automation that allows for rapid network-wide changes, and ensures policy conformance post network updates. Intelligent capabilities include search, edit, validation (including conformance checking), deployment, and audit features.

The Aruba CX Mobile App simplifies connecting, stacking, and managing HPE Aruba Networking CX 6200 switches. Switch information can be imported into Aruba NetEdit for simplified configuration management and to continuously validate the conformance of configurations anywhere in the network.

Performance and Power

The HPE Aruba Networking CX 6200 Switch Series uses a fully distributed architecture with Aruba Gen7 ASICs that delivers very low latency, increased packet buffering, and adaptive power consumption. All switching and routing are wire-speed to meet the demands of bandwidth-intensive applications.

Aruba Virtual Switching Framework (VSF) allows you to quickly grow your network using high performance front-plane stacking. Create 8 member stacks using built-in SFP+ ports with flexibility to create stacks that span longer distances using long-range transceivers.

Deploy wireless access points and IoT devices with HPE Aruba Networking CX 6200 models that support up to 1440W IEEE 802.3at Class 6 Power over Ethernet for up to 60W per port.

Flexible, modular switch models support hot-swappable, redundant power supplies and fans for enhanced resiliency.

Smarter Segmentation

The HPE Aruba Networking CX 6200 Switch Series supports Aruba Dynamic Segmentation that automatically applies and enforces user, device, and application-aware policies on Aruba wired and wireless infrastructures.

Automated device profiling, role-based access control, and Layer 7 firewall features deliver enhanced visibility and performance for a better overall experience for both IT and end-users alike.

Switch-to-switch tunnels with VXLAN for low-latency and high performance use cases.



Technical specifications

HPE Aruba Networking CX 6200M 36G 12SR5 Class6 PoE 4SFP+ Switch

Product Number	R8Q71A
Ports	<p>36x ports 10/100/1000BASE-T Class 6 PoE Ports, supporting up to 60W per port</p> <p>12x ports SmartRate 1G/2.5G/5G BaseT Class 6 PoE ports supporting up to 60W per port</p> <p>4x 1G/10G SFP ports (2x LRM; 2x LRM/MACSec 256)</p> <p>Supports PoE Standards IEEE 802.3af, 802.3at, 802.3bt (up to 60W)</p> <p>1x RJ-45 Console Port</p> <p>1x USB-C Console Port</p> <p>1x OOBM</p> <p>1x USB Type-A Host port</p>
Memory and processor	Quad Core ARM Cortex™ A72 @ 1.8 GHz
Latency	<p>1 Gbps: 2.28 μSec</p> <p>10 Gbps: 1.46 μSec</p>
Throughput	Up to 130.9 Mpps
Routing/switching capacity	272 Gbps
PoE capability	1440W
Stacking capabilities	8 members
Power supply name	<p>2 field-replaceable, hotswappable power supply slots</p> <p>1 minimum power supply required (ordered separately)</p> <p>Supported PSUs</p> <p>JL086A</p> <p>JL087A</p> <p>Max PoE Power: 1440W</p>
Input voltage	100V-120V/200V-240V
Power consumption	76W at 230 VAC
Product dimensions (metric)	4.39 x 44.247 x 38.38 cm
Weight	6.01 kg



[For additional technical information, available models and options, please reference the QuickSpecs](#)

HPE Aruba Networking Services

HPE Aruba Networking services simplify and accelerate the network technology lifecycle, enabling your network to scale with better predictability and cost-effectiveness. Whether you operate your own network and need to improve your IT efficiencies, or you want to offload some of the burden, we have the services you need to reach your goals.

Learn more about what HPE Services - Aruba Networking has to offer at: arubanetworks.com/services/

Support Services

Our support portfolio provides the essential support elements as well as proactive and preventive features to help you improve your team's productivity and get the most from your network. Our support customers benefit from faster issue resolution, simplified operations and efficiencies, and reduced network issues.

Professional Services

With deep intellectual capital and purpose-built tools, our team delivers a range of standard and custom professional services designed to accelerate your value from HPE Aruba Networking technology.

Project based services include: Annual subscription services include:

- Planning, audit, and assessment
- Architecture review and design
- Deployment, migration, and knowledge transfer
- Network optimization
- Intelligent Operations
- Customer Experience Management

Our [Education Services](#) allow your team to come up to speed quickly.

HPE GreenLake for Networking

Our NaaS solution, HPE Aruba Networking Managed Connectivity services, part of the HPE GreenLake services family, simplifies network operations, accelerates equipment handling, and increases the value of your HPE Aruba Networking network. If you need expert guidance and automation-based operations for your team, please explore the NaaS approach from HPE Aruba Networking [here](#).

**Make the right purchase decision.
Contact our presales specialists.**



Contact us

Visit ArubaNetworks.com

