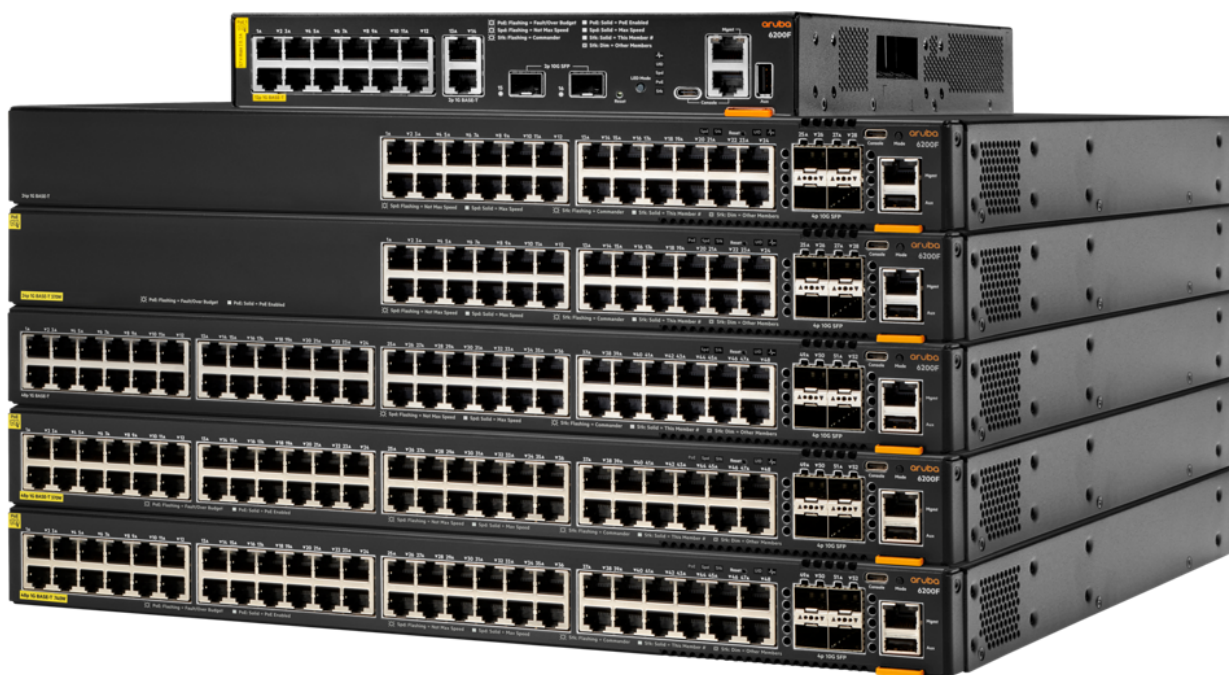


HPE Aruba Networking CX 6200 Switch Series



What's new

- Enterprise-class connectivity with support for access control lists (ACLs), robust quality of service (QoS), and common protocols such as static and access OSPF routing
- Up to 384 ports of scalability with 8-member HPE Aruba Networking Virtual Stacking Framework (VSF) stacking supported for both 24 and 48-port fixed and modular switches through the CX installer app
- Flexible, modular switch models support hot-swappable, redundant power supplies and fans for enhanced resiliency
- Real-time insights and actions through a built-in network analytics engine to securely maintain network

Overview

The HPE Aruba Networking CX 6200 Switch Series is a next-generation family of stackable access switches ideal for enterprise branch offices, campuses, and SMB networks. With a cloud-centric design that combines a fully programmable operating system (OS) with the HPE Aruba Networking CX Network Analytics Engine, this switch family extends industry-leading deployment, monitoring, and troubleshooting to the access layer.

Prepare your network for future demands with a powerful Gen7 ASIC that delivers an AI and Wi-Fi 7 ready, non-blocking performance. HPE Aruba Networking Virtual Stacking Framework (VSF) allows for stacking of up to 8 switches, providing scale and simplified management. This series includes fixed (CX 6200F) and modular (CX 6200M) switches with built-in high-speed uplinks and up to 1440W of PoE to support Internet of Things (IoT) devices such as security cameras and wireless APs.

performance, stability, and security

- Dynamic segmentation enhanced with application-based policy to deliver secure access for users and Internet of Things (IoT)
- HPE Aruba Networking Switch Multi-Edit Software supports for automation, configuration and verification

Features

AI-ready performance and power

The HPE Aruba Networking CX 6200 Switch Series provides Layer 2/3 access switching with high performance, security, and ease of use for latency-sensitive, AI resources at the enterprise edge, SMB, and branch office networks.

A fully distributed architecture with Gen7 ASICs delivers very low latency, increased packet buffering, and efficient power consumption. Switching and routing are wire-speed to meet the demands of bandwidth-intensive workloads.

HPE Aruba Networking Virtual Switching Framework (VSF) allows you to quickly grow your network using high performance front-plane stacking. Create 8 member stacks using built-in SFP+ ports with flexibility to create stacks that span longer distances using long-range transceivers.

Deploy wireless access points and Internet of Things (IoT) devices with CX 6200 models that support up to 1440W IEEE 802.3at Class 6 PoE for up to 60W per port.

Flexible, modular switch models support hot-swappable, redundant power supplies and fans for enhanced resiliency.

Automation and analytics

The HPE Aruba Networking CX 6200 Switch Series delivers visibility and built-in analytics for real-time monitoring and accelerated troubleshooting. The HPE Aruba Networking CX Network Analytics Engine (NAE) automatically interrogates and analyzes events that can impact network health.

Advanced telemetry and automation provide the ability to easily identify and troubleshoot network, system, application, and security-related issues easily through the use of Python® agents and REST APIs.

The time series database (TSDB) stores configuration and operational state data, making it available to quickly resolve network issues.

HPE Aruba Networking Switch Multi-Edit Software introduces automation that allows for rapid network-wide changes, and helps ensure policy conformance post network updates. Intelligent capabilities include search, edit, validation (including conformance checking), deployment, and audit features.

The HPE Aruba Networking CX Mobile App simplifies connecting and stacking this switch series with easy one-touch deployment. Import switch information into HPE Aruba Networking Switch Multi-Edit Software for simplified configuration management and to continual conformance validation.

Simplified configuration and management

The HPE Aruba Networking CX 6200 Switch Series provides flexibility to manage and simplify configurations with HPE Aruba Networking Central, HPE Aruba Networking Switch Multi-Edit Software, easy-to-use GUI, or industry-standard CLI.

HPE Aruba Networking Switch Multi-Edit Software introduces automation that allows for rapid network-wide changes and verifies policy conformance post network updates.

Unified management across wired, wireless, and WAN using HPE Aruba Networking Central.

Reduce manual IT operation tasks around initial deployment or on-going configuration changes to accommodate adds, moves, and changes with colorless ports using local user roles and local MAC authentication (LMA).

Ready for software-defined networking with REST APIs for fine-grained programmability of network tasks.

Smarter segmentation

The HPE Aruba Networking CX 6200 Switch Series supports dynamic segmentation that automatically applies and enforces common and consistent user, device, and application-aware policies on HPE Aruba Networking wired and wireless networks.

Automated device profiling, role-based access control, and Layer 7 firewall features deliver enhanced visibility and performance for a better overall experience for IT and end-users.

Switch-to-switch tunnels with Virtual Extensible Local-Area Networks (VXLAN) for low-latency and high performance use cases.

Reduces time-consuming and error-prone task of adds, moves and changes.

Technical specifications	HPE Aruba Networking CX 6200 Switch Series
Power consumption	Up to 64W depending on model
Input voltage	100V–120V/200V–240V
Ports	48 x 10/100/1000BASE-T ports max. depending on model 4 x 1/10G SFP ports PoE available with select models
Latency	1 Gbps: 2.28 μ Sec 10 Gbps: 1.46 μ Sec
Switching capacity	272 Gbps, maximum depending on model
Stacking capabilities	8-members
Throughput	Up to 202 Mpps, depending on model
Memory and processor	CPU: Quad-core Arm [®] Cortex-A72 at 1.8 GHz Memory: 8 GB DDR4 Flash: 16 GB eMMC
Power supply	Fixed power supply
PoE capability	Up to 740W of Class 4 PoE power, depending on model
Management features	Management flexibility with support for HPE Aruba Networking Central, easy-to-use Web GUI, CLI, and HPE Aruba Networking Switch Multi-Edit Software
Operating temperature	32°F to 113°F (0°C to 45°C) up to 5000 ft derate 1°C for every 1000 ft from 5000 ft to 10,000 ft.
Weight	5.10 kg, max, depending on model
Product dimensions (metric)	4.39 x 44.2 cm x 32.7 cm
Warranty	Limited lifetime warranty . See warranty details.

SKU comparison

	HPE Aruba Networking CX 6200F 12G Class4 PoE 2G/2SFP+ 139W Switch (R8Q72A)	HPE Aruba Networking CX 6200F 24G 4SFP Switch (SOM81A)	HPE Aruba Networking CX 6200F 24G 4SFP+ Switch (JL724A)
Differentiator	Class 4 PoE/PoE+	Non-PoE	Non-PoE
Power consumption	170W at 230 VAC	59W at 230 VAC	59W at 230 VAC
Input voltage	100V-120V/200V-240V	100V-120V/200V-240V	100V-120V/200V-240V
Ports	12 x 10/100/1000BASE-T Class 4 PoE ports, supporting up to 30W per port 2 x 1/10G SFP ports; PHY-less 2 x 1GbE ports Supports PoE standards IEEE 802.3af, 802.3at 1 x USB-C console port 1 x USB Type-A host port 1 x OOBM 1 x RJ-45 console port	24 x 10/100/1000BASE-T ports 4 x 100M/1G SFP ports 1 x USB-C console port 1 x USB Type-A host port 1 x OOBM 1 x RJ-45 console port	24 x 10/100/1000BASE-T ports 4 x 1/10G SFP ports 1 x USB-C console port 1 x USB Type-A host port 1 x OOBM 1 x Bluetooth adapter to be used with CX Mobile app
Latency	1 Gbps: 2.28 Sec 10 Gbps: 1.46 Sec	1 Gbps: 2.28 Sec 10 Gbps: 1.46 Sec	1 Gbps: 2.28 Sec 10 Gbps: 1.46 Sec
Switching capacity	68 Gbps	128 Gbps	128 Gbps
Stacking capabilities	8-members	8-members	8-members
Throughput	Up to 45.1 Mpps	Up to 95.2 Mpps	Up to 95.2 Mpps
Memory and processor	CPU: Quad-core Arm® Cortex-A72 at 1.2 GHz Memory: 8 GB DDR4 Flash: 16 GB eMMC	CPU: Quad-core Arm® Cortex-A72 at 1.8 GHz Memory: 8 GB DDR4 Flash: 16 GB eMMC	CPU: Quad-core Arm® Cortex-A72 at 1.8 GHz Memory: 8 GB DDR4 Flash: 16 GB eMMC
Power supply	Fixed power supply Up to 139W of Class 4 PoE Power	Fixed power supply	Fixed power supply (200W)
PoE capability	139W	Non-PoE model	Non-PoE model
Management features	Management flexibility with support for HPE Aruba Networking Central, easy-to-use Web GUI, CLI, and HPE Aruba Networking Switch Multi-Edit Software	Management flexibility with support for HPE Aruba Networking Central, easy-to-use Web GUI, CLI, and HPE Aruba Networking Switch Multi-Edit Software	Management flexibility with support for HPE Aruba Networking Central, easy-to-use Web GUI, CLI, and HPE Aruba Networking Switch Multi-Edit Software
Operating temperature	32°F to 113°F (0°C to 45°C) up to 5000 ft; derate 1°C for every 1000 ft from 5000 ft to 10,000 ft.	32°F to 113°F (0°C to 45°C) up to 5000 ft; derate 1°C for every 1000 ft from 5000 ft to 10,000 ft.	32°F to 113°F (0°C to 45°C) up to 5000 ft; derate 1°C for every 1000 ft from 5000 ft to 10,000 ft.
Warranty	Limited lifetime warranty. See warranty details.	Limited lifetime warranty. See warranty details.	Limited lifetime warranty. See warranty details.

	HPE Aruba Networking CX 6200F 24G 4SFP+ Switch (JL724B)	HPE Aruba Networking CX 6200F 24G Class-4 PoE 4SFP 370W Switch (SOM82A)	HPE Aruba Networking CX 6200F 24G Class-4 PoE 4SFP+ 370W Switch (JL725B)
Differentiator	Non-PoE	Class 4 PoE/PoE+	Class 4 PoE/PoE+
Power consumption	59W at 230 VAC	65W at 230 VAC	65W at 230 VAC
Input voltage	100V-120V/200V-240V	100V-120V/200V-240V	100V-120V/200V-240V
Ports	24 x 10/100/1000BASE-T ports 4 x 100M/1/10G SFP+ ports 1 x USB-C console port 1 x USB Type-A host port 1 x OOBM 1 x RJ-45 console port	24 x 10/100/1000BASE-T Class 4 PoE ports, supporting up to 30W per port 4 x 100M/1G SFP ports Supports PoE standards IEEE 802.3af, 802.3at 1 x USB-C console port 1 x USB Type-A host port 1 x OOBM 1 x RJ-45 console port	24 x 10/100/1000BASE-T Class 4 PoE ports, supporting up to 30W per port 4 x 100M/1/10G SFP+ ports Supports PoE standards IEEE 802.3af, 802.3at 1 x USB-C console port 1 x USB Type-A host port 1 x OOBM 1 x RJ-45 console port
Latency	1 Gbps: 2.28 Sec 10 Gbps: 1.46 Sec	1 Gbps: 2.28 Sec 10 Gbps: 1.46 Sec	1 Gbps: 2.28 Sec 10 Gbps: 1.46 Sec
Switching capacity	128 Gbps	128 Gbps	128 Gbps
Stacking capabilities	8-members	8-members	8-members
Throughput	Up to 95.2 Mpps	Up to 95.2 Mpps	Up to 95.2 Mpps
Memory and processor	CPU: Quad-core Arm® Cortex-A72 at 1.8 GHz Memory: 8 GB DDR4 Flash: 16 GB eMMC	CPU: Quad-core Arm® Cortex-A72 at 1.8 GHz Memory: 8 GB DDR4 Flash: 16 GB eMMC	CPU: Quad-core Arm® Cortex-A72 at 1.8 GHz Memory: 8 GB DDR4 Flash: 16 GB eMMC
Power supply	Fixed power supply	Fixed power supply Up to 370W of Class 4 PoE Power	Fixed power supply Up to 370W of Class 4 PoE Power
PoE capability	Non-PoE model	370W	370W
Management features	Management flexibility with support for HPE Aruba Networking Central, easy-to-use Web GUI, CLI, and HPE Aruba Networking Switch Multi-Edit Software	Management flexibility with support for HPE Aruba Networking Central, easy-to-use Web GUI, CLI, and HPE Aruba Networking Switch Multi-Edit Software	Management flexibility with support for HPE Aruba Networking Central, easy-to-use Web GUI, CLI, and HPE Aruba Networking Switch Multi-Edit Software
Operating temperature	32°F to 113°F (0°C to 45°C) up to 5000 ft; derate 1°C for every 1000 ft from 5000 ft to 10,000 ft.	32°F to 113°F (0°C to 45°C) up to 5000 ft; derate 1°C for every 1000 ft from 5000 ft to 10,000 ft.	32°F to 113°F (0°C to 45°C) up to 5000 ft; derate 1°C for every 1000 ft from 5000 ft to 10,000 ft.
Warranty	Limited lifetime warranty. See warranty details.	Limited lifetime warranty. See warranty details.	Limited lifetime warranty. See warranty details.

	HPE Aruba Networking CX 6200F 24G Class4 PoE 4SFP+ 370W Switch (JL725A)	HPE Aruba Networking CX 6200F 48G 4SFP Switch (SOM83A)	HPE Aruba Networking CX 6200F 48G 4SFP+ Switch (JL726B)
Differentiator	Class 4 PoE/PoE+	Non-PoE	Non-PoE
Power consumption	65W at 230 VAC	68W at 230 VAC	68W at 230 VAC
Input voltage	100V-120V/200V-240V	100V-120V/200V-240V	100V-120V/200V-240V
Ports	24 x 10/100/1000BASE-T Class 4 PoE ports 4 x 1/10G SFP ports Supports PoE standards IEEE 802.3af, 802.3at 1 x USB-C console port 1 x USB Type-A host port 1 x OOBM 1 x Bluetooth adapter to be used with CX Mobile app	48 x 10/100/1000BASE-T ports 4 x 100M/1G SFP ports 1 x USB-C console port 1 x USB Type-A host port 1 x OOBM 1 x RJ-45 console port	48 x 10/100/1000BASE-T ports 4 x 100M/1/10G SFP+ ports 1 x USB-C console port 1 x USB Type-A host port 1 x OOBM 1 x RJ-45 console port
Latency	1 Gbps: 2.28 Sec 10 Gbps: 1.46 Sec	1 Gbps: 2.28 Sec 10 Gbps: 1.46 Sec	1 Gbps: 2.28 Sec 10 Gbps: 1.46 Sec
Switching capacity	128 Gbps	176 Gbps	176 Gbps
Stacking capabilities	8-members	8-members	8-members
Throughput	Up to 95.2 Mpps	Up to 130.9 Mpps	Up to 130.9 Mpps
Memory and processor	CPU: Quad-core Arm® Cortex-A72 at 1.8 GHz Memory: 8 GB DDR4 Flash: 16 GB eMMC	CPU: Quad-core Arm® Cortex-A72 at 1.8 GHz Memory: 8 GB DDR4 Flash: 16 GB eMMC	CPU: Quad-core Arm® Cortex-A72 at 1.8 GHz Memory: 8 GB DDR4 Flash: 16 GB eMMC
Power supply	Fixed power supply (500W) Up to 370W of Class 4 PoE Power	Fixed power supply	Fixed power supply
PoE capability	370W	Non-PoE model	Non-PoE model
Management features	Management flexibility with support for HPE Aruba Networking Central, easy-to-use Web GUI, CLI, and HPE Aruba Networking Switch Multi-Edit Software	Management flexibility with support for HPE Aruba Networking Central, easy-to-use Web GUI, CLI, and HPE Aruba Networking Switch Multi-Edit Software	Management flexibility with support for HPE Aruba Networking Central, easy-to-use Web GUI, CLI, and HPE Aruba Networking Switch Multi-Edit Software
Operating temperature	32°F to 113°F (0°C to 45°C) up to 5000 ft; derate 1°C for every 1000 ft from 5000 ft to 10,000 ft.	32°F to 113°F (0°C to 45°C) up to 5000 ft; derate 1°C for every 1000 ft from 5000 ft to 10,000 ft.	32°F to 113°F (0°C to 45°C) up to 5000 ft; derate 1°C for every 1000 ft from 5000 ft to 10,000 ft.
Warranty	Limited lifetime warranty. See warranty details.	Limited lifetime warranty. See warranty details.	Limited lifetime warranty. See warranty details.

	HPE Aruba Networking CX 6200F 48G 4SFP+ Switch (JL726A)	HPE Aruba Networking CX 6200F 48G Class-4 PoE 4SFP 370W Switch (SOM84A)	HPE Aruba Networking CX 6200F 48G Class-4 PoE 4SFP 740W Switch (SOM85A)
Differentiator	Non-PoE	Class 4 PoE/PoE+	Class 4 PoE/PoE+
Power consumption	68W at 230 VAC	76W at 230 VAC	76W at 230 VAC
Input voltage	100V-120V/200V-240V	100V-120V/200V-240V	100V-120V/200V-240V
Ports	48 x 10/100/1000BASE-T ports 4 x 1/10G SFP ports 1 x USB-C console port 1 x USB Type-A host port 1 x OOBM 1 x Bluetooth adapter to be used with CX Mobile app	48 x 10/100/1000BASE-T Class 4 PoE ports, supporting up to 30W per port 4 x 100M/1G SFP ports Supports PoE standards IEEE 802.3af, 802.3at 1 x USB-C console port 1 x USB Type-A host port 1 x OOBM 1 x RJ-45 console port	48 x 10/100/1000BASE-T Class 4 PoE ports, supporting up to 30W per port 4 x 100M/1G SFP ports Supports PoE standards IEEE 802.3af, 802.3at 1 x USB-C console port 1 x USB Type-A host port 1 x OOBM 1 x RJ-45 console port
Latency	1 Gbps: 2.28 Sec 10 Gbps: 1.46 Sec	1 Gbps: 2.28 Sec 10 Gbps: 1.46 Sec	1 Gbps: 2.28 Sec 10 Gbps: 1.46 Sec
Switching capacity	176 Gbps	176 Gbps	176 Gbps
Stacking capabilities	8-members	8-members	8-members
Throughput	Up to 130.9 Mpps	Up to 130.9 Mpps	Up to 130.9 Mpps
Memory and processor	CPU: Quad-core Arm® Cortex-A72 at 1.8 GHz Memory: 8 GB DDR4 Flash: 16 GB eMMC	CPU: Quad-core Arm® Cortex-A72 at 1.8 GHz Memory: 8 GB DDR4 Flash: 16 GB eMMC	CPU: Quad-core Arm® Cortex-A72 at 1.8 GHz Memory: 8 GB DDR4 Flash: 16 GB eMMC
Power supply	Fixed power supply (200W)	Fixed power supply Up to 370W of Class 4 PoE Power	Fixed power supply Up to 740W of Class 4 PoE Power
PoE capability	Non-PoE model	370W	740W
Management features	Management flexibility with support for HPE Aruba Networking Central, easy-to-use Web GUI, CLI, and HPE Aruba Networking Switch Multi-Edit Software	Management flexibility with support for HPE Aruba Networking Central, easy-to-use Web GUI, CLI, and HPE Aruba Networking Switch Multi-Edit Software	Management flexibility with support for HPE Aruba Networking Central, easy-to-use Web GUI, CLI, and HPE Aruba Networking Switch Multi-Edit Software
Operating temperature	32°F to 113°F (0°C to 45°C) up to 5000 ft; derate 1°C for every 1000 ft from 5000 ft to 10,000 ft.	32°F to 113°F (0°C to 45°C) up to 5000 ft; derate 1°C for every 1000 ft from 5000 ft to 10,000 ft.	32°F to 113°F (0°C to 45°C) up to 5000 ft; derate 1°C for every 1000 ft from 5000 ft to 10,000 ft.
Warranty	Limited lifetime warranty. See warranty details.	Limited lifetime warranty. See warranty details.	Limited lifetime warranty. See warranty details.

	HPE Aruba Networking CX 6200F 48G Class-4 PoE 4SFP+ 370W Switch (JL727B)	HPE Aruba Networking CX 6200F 48G Class-4 PoE 4SFP+ 740W Switch (JL728B)	HPE Aruba Networking CX 6200F 48G Class4 PoE 4SFP+ 370W Switch (JL727A)
Differentiator	Class 4 PoE/PoE+	Class 4 PoE/PoE+	Class 4 PoE/PoE+
Power consumption	76W at 230 VAC	76W at 230 VAC	76W at 230 VAC
Input voltage	100V-120V/200V-240V	100V-120V/200V-240V	100V-120V/200V-240V
Ports	<p>48 x 10/100/1000BASE-T Class 4 PoE ports, supporting up to 30W per port</p> <p>4 x 100M/1/10G SFP+ ports</p> <p>Supports PoE standards IEEE 802.3af, 802.3at</p> <p>1 x USB-C console port</p> <p>1 x USB Type-A host port</p> <p>1 x OOBM</p> <p>1 x RJ-45 console port</p>	<p>48 x 10/100/1000BASE-T Class 4 PoE ports, supporting up to 30W per port</p> <p>4 x 100M/1/10G SFP+ ports</p> <p>Supports PoE standards IEEE 802.3af, 802.3at</p> <p>1 x USB-C console port</p> <p>1 x USB Type-A host port</p> <p>1 x OOBM</p> <p>1 x RJ-45 console port</p>	<p>48 x 10/100/1000BASE-T Class 4 PoE ports</p> <p>4 x 1/10G SFP ports</p> <p>Supports PoE standards IEEE 802.3af, 802.3at</p> <p>1 x USB-C console port</p> <p>1 x USB Type-A host port</p> <p>1 x OOBM</p> <p>1 x Bluetooth adapter to be used with CX Mobile app</p>
Latency	1 Gbps: 2.28 Sec 10 Gbps: 1.46 Sec	1 Gbps: 2.28 Sec 10 Gbps: 1.46 Sec	1 Gbps: 2.28 Sec 10 Gbps: 1.46 Sec
Switching capacity	176 Gbps	176 Gbps	176 Gbps
Stacking capabilities	8-members	8-members	8-members
Throughput	Up to 130.9 Mpps	Up to 130.9 Mpps	Up to 130.9 Mpps
Memory and processor	CPU: Quad-core Arm® Cortex-A72 at 1.8 GHz Memory: 8 GB DDR4 Flash: 16 GB eMMC	CPU: Quad-core Arm® Cortex-A72 at 1.8 GHz Memory: 8 GB DDR4 Flash: 16 GB eMMC	CPU: Quad-core Arm® Cortex-A72 at 1.8 GHz Memory: 8 GB DDR4 Flash: 16 GB eMMC
Power supply	Fixed power supply Up to 370W of Class 4 PoE Power	Fixed power supply Up to 740W of Class 4 PoE Power	Fixed power supply (500W) Up to 370W of Class 4 PoE Power
PoE capability	370W	740W	370W
Management features	Management flexibility with support for HPE Aruba Networking Central, easy-to-use Web GUI, CLI, and HPE Aruba Networking Switch Multi-Edit Software	Management flexibility with support for HPE Aruba Networking Central, easy-to-use Web GUI, CLI, and HPE Aruba Networking Switch Multi-Edit Software	Management flexibility with support for HPE Aruba Networking Central, easy-to-use Web GUI, CLI, and HPE Aruba Networking Switch Multi-Edit Software
Operating temperature	32°F to 113°F (0°C to 45°C) up to 5000 ft; derate 1°C for every 1000 ft from 5000 ft to 10,000 ft.	32°F to 113°F (0°C to 45°C) up to 5000 ft; derate 1°C for every 1000 ft from 5000 ft to 10,000 ft.	32°F to 113°F (0°C to 45°C) up to 5000 ft; derate 1°C for every 1000 ft from 5000 ft to 10,000 ft.
Warranty	Limited lifetime warranty. See warranty details.	Limited lifetime warranty. See warranty details.	Limited lifetime warranty. See warranty details.

	HPE Aruba Networking CX 6200F 48G Class4 PoE 4SFP+ 740W Switch (JL728A)	HPE Aruba Networking CX 6200M 24G 4SFP+ Switch (R8Q67A)	HPE Aruba Networking CX 6200M 24G Class4 PoE 4SFP+ Switch (R8Q68A)
Differentiator	Class 4 PoE/PoE+	Non-PoE	Class 4 PoE/PoE+
Power consumption	76W at 230 VAC	75W at 230 VAC	76W at 230 VAC
Input voltage	100V-120V/200V-240V	100V-120V/200V-240V	100V-120V/200V-240V
Ports	48 x 10/100/1000BASE-T Class 4 PoE ports 4 x 1/10G SFP ports Supports PoE standards IEEE 802.3af, 802.3at 1 x USB-C console port 1 x USB Type-A host port 1 x OOBM 1 x Bluetooth adapter to be used with CX Mobile app	24 x 10/100/1000BASE-T ports 4 x 1/10G SFP ports (2 x LRM; 2 x LRM/MACSec 256) 1 x USB-C console port 1 x USB Type-A host port 1 x OOBM 1 x RJ-45 console port	24 x 10/100/1000BASE-T Class 4 PoE ports, supporting up to 30W per port 4 x 1/10G SFP ports (2 x LRM; 2 x LRM/MACSec 256) Supports PoE standards IEEE 802.3af, 802.3at 1 x USB-C console port 1 x USB Type-A host port 1 x OOBM 1 x RJ-45 console port
Latency	1 Gbps: 2.28 Sec 10 Gbps: 1.46 Sec	1 Gbps: 2.28 Sec 10 Gbps: 1.46 Sec	1 Gbps: 2.28 Sec 10 Gbps: 1.46 Sec
Switching capacity	176 Gbps	128 Gbps	128 Gbps
Stacking capabilities	8-members	8-members	8-members
Throughput	Up to 130.9 Mpps	Up to 95.2 Mpps	Up to 95.2 Mpps
Memory and processor	CPU: Quad-core Arm® Cortex-A72 at 1.8 GHz Memory: 8 GB DDR4 Flash: 16 GB eMMC	CPU: Quad-core Arm® Cortex-A72 at 1.8 GHz Memory: 8 GB DDR4 Flash: 16 GB eMMC	CPU: Quad-core Arm® Cortex-A72 at 1.8 GHz Memory: 8 GB DDR4 Flash: 16 GB eMMC
Power supply	Fixed power supply (950W) Up to 740W of Class 4 PoE Power	2 field-replaceable, hotswappable power supply slots 1 minimum power supply required (ordered separately) Supports JL085A PSU	2 field-replaceable, hotswappable power supply slots 1 minimum power supply required (ordered separately) Supported PSUs JL086A JL087A Max PoE Power: 740W
PoE capability	740W	Non-PoE model	740W
Management features	Management flexibility with support for HPE Aruba Networking Central, easy-to-use Web GUI, CLI, and HPE Aruba Networking Switch Multi-Edit Software	Management flexibility with support for HPE Aruba Networking Central, easy-to-use Web GUI, CLI, and HPE Aruba Networking Switch Multi-Edit Software	Management flexibility with support for HPE Aruba Networking Central, easy-to-use Web GUI, CLI, and HPE Aruba Networking Switch Multi-Edit Software
Operating temperature	32°F to 113°F (0°C to 45°C) up to 5000 ft; derate 1°C for every 1000 ft from 5000 ft to 10,000 ft.	32°F to 113°F (0°C to 45°C) up to 5000 ft; derate 1°C for every 1000 ft from 5000 ft to 10,000 ft. Can support excursion to 131°F (55°C) for short periods of time.	32°F to 113°F (0°C to 45°C) up to 5000 ft; derate 1°C for every 1000 ft from 5000 ft to 10,000 ft. Can support excursion to 131°F (55°C) for short periods of time.
Warranty	Limited lifetime warranty. See warranty details.	Limited lifetime warranty. See warranty details.	Limited lifetime warranty. See warranty details.

	HPE Aruba Networking CX 6200M 36G 12SR5 Class6 PoE 4SFP+ Switch (R8Q71A)	HPE Aruba Networking CX 6200M 48G 4SFP+ Switch (R8Q69A)	HPE Aruba Networking CX 6200M 48G Class4 PoE 4SFP+ Switch (R8Q70A)
Differentiator	Class 4 PoE/PoE+	Non-PoE	Class 4 PoE/PoE+
Power consumption	76W at 230 VAC	75W at 230 VAC	76W at 230 VAC
Input voltage	100V-120V/200V-240V	100V-120V/200V-240V	100V-120V/200V-240V
Ports	<p>36 x 10/100/1000BASE-T Class 6 PoE ports, supporting up to 60W per port 12 x HPE Smart Rate 1/2.5/5G BaseT Class 6 PoE ports supporting up to 60W per port 4 x 1/10G SFP ports (2 x LRM; 2 x LRM/MACSec 256) Supports PoE standards IEEE 802.3af, 802.3at, 802.3bt (up to 60W)</p> <p>1 x USB-C console port 1 x USB Type-A host port 1 x OOBM 1 x RJ-45 console port</p>	<p>48 x 10/100/1000BASE-T ports 4 x 1/10G SFP ports (2 x LRM; 2 x LRM/MACSec 256)</p> <p>1 x USB-C console port 1 x USB Type-A host port 1 x OOBM 1 x RJ-45 console port</p>	<p>48 x 10/100/1000BASE-T Class 4 PoE ports, supporting up to 30W per port 4 x 1/10G SFP ports (2 x LRM; 2 x LRM/MACSec 256) Supports PoE standards IEEE 802.3af, 802.3at</p> <p>1 x USB-C console port 1 x USB Type-A host port 1 x OOBM 1 x RJ-45 console port</p>
Latency	1 Gbps: 2.28 Sec 10 Gbps: 1.46 Sec	1 Gbps: 2.28 Sec 10 Gbps: 1.46 Sec	1 Gbps: 2.28 Sec 10 Gbps: 1.46 Sec
Switching capacity	272 Gbps	176 Gbps	176 Gbps
Stacking capabilities	8-members	8-members	8-members
Throughput	Up to 130.9 Mpps	Up to 130.9 Mpps	Up to 130.9 Mpps
Memory and processor	CPU: Quad-core Arm® Cortex-A72 at 1.8 GHz Memory: 8 GB DDR4 Flash: 16 GB eMMC	CPU: Quad-core Arm® Cortex-A72 at 1.8 GHz Memory: 8 GB DDR4 Flash: 16 GB eMMC	CPU: Quad-core Arm® Cortex-A72 at 1.8 GHz Memory: 8 GB DDR4 Flash: 16 GB eMMC
Power supply	2 field-replaceable, hotswappable power supply slots 1 minimum power supply required (ordered separately) Supported PSUs JL086A JL087A Max PoE Power: 1440W	2 field-replaceable, hotswappable power supply slots 1 minimum power supply required (ordered separately) Supports JL085A PSU	2 field-replaceable, hotswappable power supply slots 1 minimum power supply required (ordered separately) Supported PSUs JL086A JL087A Max PoE Power: 1440W
PoE capability	1440W	Non-PoE model	1440W
Management features	Management flexibility with support for HPE Aruba Networking Central, easy-to-use Web GUI, CLI, and HPE Aruba Networking Switch Multi-Edit Software	Management flexibility with support for HPE Aruba Networking Central, easy-to-use Web GUI, CLI, and HPE Aruba Networking Switch Multi-Edit Software	Management flexibility with support for HPE Aruba Networking Central, easy-to-use Web GUI, CLI, and HPE Aruba Networking Switch Multi-Edit Software

	HPE Aruba Networking CX 6200M 36G 12SR5 Class6 PoE 4SFP+ Switch (R8Q71A)	HPE Aruba Networking CX 6200M 48G 4SFP+ Switch (R8Q69A)	HPE Aruba Networking CX 6200M 48G Class4 PoE 4SFP+ Switch (R8Q70A)
Operating temperature	32°F to 113°F (0°C to 45°C) up to 5000 ft; derate 1°C for every 1000 ft from 5000 ft to 10,000 ft. Can support excursion to 131°F (55°C) for short periods of time.	32°F to 113°F (0°C to 45°C) up to 5000 ft; derate 1°C for every 1000 ft from 5000 ft to 10,000 ft. Can support excursion to 131°F (55°C) for short periods of time.	32°F to 113°F (0°C to 45°C) up to 5000 ft; derate 1°C for every 1000 ft from 5000 ft to 10,000 ft. Can support excursion to 131°F (55°C) for short periods of time.
Warranty	Limited lifetime warranty. See warranty details.	Limited lifetime warranty. See warranty details.	Limited lifetime warranty. See warranty details.

HPE Aruba Networking Services

HPE Aruba Networking services simplify and accelerate the network technology lifecycle, enabling your network to scale with better predictability and cost-effectiveness. Whether you operate your own network and need to improve your IT efficiencies, or you want to offload some of the burden, we have the services you need to reach your goals.

Learn more about what HPE Services - Aruba Networking has to offer at: hpe.com/edge/services

Support Services

Our support portfolio provides the essential support elements as well as proactive and preventive features to help you improve your team's productivity and get the most from your network. Our support customers benefit from faster issue resolution, simplified operations and efficiencies, and reduced network issues.

Professional Services

With deep intellectual capital and purpose-built tools, our team delivers a range of standard and custom professional services designed to accelerate your value from HPE Aruba Networking technology.

Project based services include:

- Planning, audit, and assessment
- Architecture review and design
- Deployment, migration, and knowledge transfer

Annual subscription services include:

- Network optimization
- Intelligent Operations
- Customer Experience Management

Our [Education Services](#) allow your team to come up to speed quickly.

GreenLake for Networking

Deliver innovative business outcomes by leveraging new ways to consume, deploy and [manage networks](#).

[For additional technical information, available models and options, please reference the QuickSpecs](#)

Visit [HPE.com](https://www.hpe.com)

[Chat now](#)

© Copyright 2026 Hewlett Packard Enterprise Development LP. The information contained herein is subject to change without notice. The only warranties for Hewlett Packard Enterprise products and services are set forth in the express warranty statements accompanying such products and services. Nothing herein should be construed as constituting an additional warranty. Hewlett Packard Enterprise shall not be liable for technical or editorial errors or omissions contained herein.

Parts and Materials: HPE will provide HPE-supported replacement parts and materials required to maintain the covered hardware.

Parts and components that have reached their maximum supported lifetime and/or the maximum usage limitations as set forth in the manufacturer's operating manual, product quick-specs, or the technical product data sheet will not be provided, repaired, or replaced as part of these services.

Arm is a registered trademark of Arm Limited. Python® is a registered trademark of the Python Software Foundation. Bluetooth is a trademark owned by its proprietor and used by Hewlett Packard Enterprise under license.

Image may differ from the actual product.

[PSN1012684094VNEN](#), June, 2026.

HEWLETT PACKARD ENTERPRISE

[hpe.com](https://www.hpe.com)

