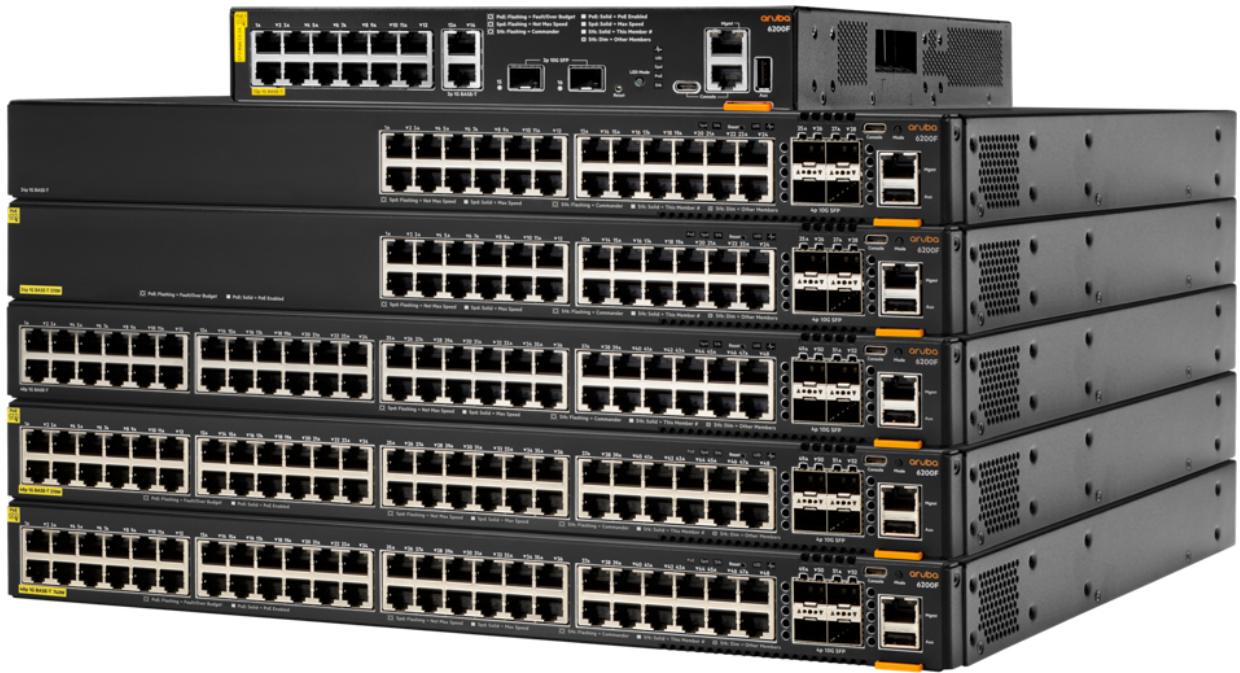


# HPE Aruba Networking CX 6200 Switch Series



## 新增内容

企业级连接，支持访问控制列表 (ACL)、强大的服务质量 (QoS) 和各种常用协议，例如静态和访问 OSPF 路由

通过 CX 安装程序应用程序，支持 8 成员 HPE Aruba 网络虚拟堆叠框架 (VSF) 堆叠，最多可扩展至 384 个端口，适用于 24 端口和 48 端口固定式和模块化交换机。

灵活的模块化交换机型号支持热插拔、冗余电源和风扇，以增强可靠性。

通过内置的网络分析引擎提供实时洞察和行动，以安全地维护网络性能、稳定性和安全性。

动态分段结合基于应用的策略，为用户和物联网 (IoT) 提供安全访问

## 概述

HPE Aruba Networking CX 6200 系列交换机是新一代可堆叠接入交换机，非常适合企业分支机构、园区和中小企业网络。该交换机系列采用以云为中心的设计，将完全可编程的操作系统 (OS) 与 HPE Aruba Networking CX 网络分析引擎相结合，将业界领先的部署、监控和故障排除功能扩展到接入层。

使用功能强大的 Gen7 ASIC 为您的网络做好准备，以满足未来的需求，该 ASIC 可提供 AI 和 Wi-Fi 7 就绪、无阻塞的性能。HPE Aruba 网络虚拟堆叠框架 (VSF) 允许堆叠多达 8 台交换机，从而提供可扩展性和简化的管理。该系列产品包括固定式 (CX 6200F) 和模块化 (CX 6200M) 交换机，内置高速上行链路，最高支持 1440W PoE，可支持物联网 (IoT) 设备，例如安全摄像头和无线 AP。

## 功能

### AI 就绪性能和功率

HPE Aruba Networking CX 6200 系列交换机为企业边缘、中小企业和分支机构网络中对延迟敏感的 AI 资源提供高性能、安全性和易用性的 2/3 层接入交换。

采用 Gen7 ASIC 的全分布式架构可实现极低的延迟、更高的数据包缓冲能力和高效的功耗。交换和路由速度达到线速，以满足带宽密集型工作负载的需求。

时间序列数据库 (TSDB) 会存储配置和操作状态数据，有助于快速解决网络问题。

使用支持高达 1440W IEEE 802.3at 6 类 PoE（每个端口最高 60W）的 CX 6200 型号部署无线接入点和物联网 (IoT) 设备。

弹性模块化交换机型号支持热插拔、冗余电源和风扇，可显著增强恢复能力。

### 自动化与分析

HPE Aruba Networking CX 6200 交换机系列采用全分布式架构和 Aruba Gen7 ASIC，延迟非常低，同时可改善数据包缓冲和自适应功耗调节功能。各种交换和路由速度均可达到有线速度，能够满足带宽密集型应用的要求。

高级遥测和自动化功能使得用户能够通过使用 Python 代理和 REST API 轻松识别和排除网络、系统、应用程序和安全相关问题。

时间序列数据库 (TSDB) 会存储配置和操作状态数据，有助于快速解决网络问题。

HPE Aruba 网络交换机多编辑软件引入了自动化功能，可实现全网快速更改，并有助于确保网络更新后策略的一致性。智能功能包括搜索、编辑、验证（包括一致性检查）、部署和审计功能。

HPE Aruba Networking CX 移动应用通过简单的一键式部署简化了此交换机系列的连接和堆叠。将交换机信息导入 HPE Aruba Networking Switch Multi-Edit Software，可实现简化配置管理及持续合规性验证。

### 简化配置和管理

HPE Aruba Networking CX 6200 系列交换机提供灵活的管理和简化配置方式，可通过 HPE Aruba Networking Central、HPE Aruba Networking Switch Multi-Edit 软件、易于使用的 GUI 或行业标准的 CLI 进行管理。

自动化设备剖析、基于角色的访问控制和第 7 层防火墙功能可增强可见性和性能，改善 IT 和终端用户等的整体使用体验。

交换机-交换机隧道搭配 VXLAN 可实现低延迟和高性能用例。

通过无色端口使用本地用户角色和本地 MAC 身份验证 (LMA) 完成添加、移动和变更，减少初始部署或持续配置变更方面的手动 IT 操作任务。

采用 REST API，具备精细的网络任务可编程功能，可实现软件定义网络。

### 分段更智能

HPE Aruba Networking CX 6200 交换机系列支持动态网络分段功能，可在 HPE Aruba Networking 有线和无线网络自动应用和实施常见和一致的用户、设备和应用感知策略。

自动化设备分析、基于角色的访问控制和第 7 层防火墙功能可增强可见性和性能，改善 IT 和终端用户的整体使用体验。

交换机-交换机隧道搭配虚拟可扩展局域网 (VXLAN) 可实现低延迟和高性能用例。

减少耗时且易出错的添加、迁移和更改任务。

技术规格	HPE Aruba Networking CX 6200 Switch Series
功耗	高达 64 瓦，具体取决于机型
输入电压	100V 120V/200V 240V
端口	上限 48 个 10/100/1000BASE-T 端口，具体取决于机型； 4 个 1/10G SFP 端口， 部分机型支持 PoE
延迟时间	1 Gbps: 2.28 $\mu$ Sec, 10 Gbps: 1.46 $\mu$ Sec
交换容量	上限 272 Gbps，具体取决于机型
堆叠功能	8 个成员
吞吐量	高达 202 Mpps，具体取决于机型
内存和处理器	中央处理器：四核 Arm® Cortex-A72 处理器，主频 1.8 GHz 记忆：8 GB DDR4 闪存：16 GB eMMC
电源名称	固定电源
PoE 功能	第 4 类 PoE 功率高达 740 瓦，具体取决于机型
管理特性	管理灵活，支持 HPE Aruba Networking Central、易于使用的 Web GUI、CLI 和 HPE Aruba Networking Switch Multi-Edit Software
重量	上限 5.10 千克，具体取决于机型
产品尺寸（公制）	4.39 x 44.2 x 32.7 厘米
保修	有限终身 <a href="#">保修</a> 。查看保修详情。

## SKU 对比

	HPE Aruba Networking CX 6200F 12G Class4 PoE 2G/2SFP+ 139W Switch (R8Q72A)	HPE Aruba Networking CX 6200F 24G 4SFP Switch (S0M81A)	HPE Aruba Networking CX 6200F 24G 4SFP+ Switch (JL724A)
差异	Class 4 PoE (PoE+)	非 PoE	非 PoE
功耗	170 瓦 (230 伏交流电)	59 瓦 (230 伏交流电)	59 瓦 (230 伏交流电)
输入电压	100V 120V/200V 240V	100V 120V/200V 240V	100V 120V/200V 240V
端口	12个10/100/1000BASE-T 4类PoE端口, 支持每个端口最高30瓦 2个1/10GSFP端口;无PHY 2个1GbE端口 支持 PoE 标准 IEEE 802.3af、802.3at  1 个 USB-C 控制台端口 1 x USB Type-A 主机端口 1 x OOBM 1 个 RJ-45 控制台端口	24个10/100/1000BASE-T端口 4个100M/1GSFP端口  1 个 USB-C 控制台端口 1 x USB Type-A 主机端口 1 x OOBM 1 个 RJ-45 控制台端口	24个10/100/1000BASE-T端口 4个1/10G的SFP端口  1 个 USB-C 控制台端口 1 x USB Type-A 主机端口 1 x OOBM 1 x 蓝牙适配器, 用于 CX Mobile 应用
延迟时间	1 Gbps: 2.28 $\mu$ Sec, 10 Gbps: 1.46 $\mu$ Sec	1 Gbps: 2.28 $\mu$ Sec, 10 Gbps: 1.46 $\mu$ Sec	1 Gbps: 2.28 $\mu$ Sec, 10 Gbps: 1.46 $\mu$ Sec
交换容量	68 Gbps	128 Gbps	128 Gbps
堆叠功能	8 个成员	8 个成员	8 个成员
吞吐量	高达 45.1 Mpps	高达 95.2 Mpps	高达 95.2 Mpps
内存和处理器	CPU: 四核Arm Cortex-A72, 频率为1.2 GHz 记忆: 8GB DDR4 闪存: 16 GB eMMC	中央处理器: 四核 Arm Cortex-A72 处理器, 主频 1.8 GHz 记忆: 8 GB DDR4 闪存: 16 GB eMMC	中央处理器: 四核 Arm Cortex-A72 处理器, 主频 1.8 GHz 记忆: 8 GB DDR4 闪存: 16 GB eMMC
电源名称	固定电源, 高达 139 瓦的 Class 4 PoE 电源	固定电源	固定电源 (200 瓦)
PoE 功能	139 瓦	非 PoE 机型	非 PoE 机型
管理特性	管理灵活, 支持 HPE Aruba Networking Central、易于使用的 Web GUI、CLI 和 HPE Aruba Networking Switch Multi-Edit Software	管理灵活, 支持 HPE Aruba Networking Central、易于使用的 Web GUI、CLI 和 HPE Aruba Networking Switch Multi-Edit Software	管理灵活, 支持 HPE Aruba Networking Central、易于使用的 Web GUI、CLI 和 HPE Aruba Networking Switch Multi-Edit Software
重量	5.09 千克	上限 5.10 千克, 具体取决于机型	4.36 千克
产品尺寸 (公制)	4.39 x 44.247 x 32.54 厘米	4.39 x 44.2 x 32.7 厘米	4.39 x 44.2 x 32.7 厘米
保修	有限终身保修。查看保修详情。	有限终身保修。查看保修详情。	有限终身保修。查看保修详情。

	HPE Aruba Networking CX 6200F 24G 4SFP+ Switch (JL724B)	HPE Aruba Networking CX 6200F 24G Class-4 PoE 4SFP 370W Switch (S0M82A)	HPE Aruba Networking CX 6200F 24G Class-4 PoE 4SFP+ 370W Switch (JL725B)
差异	非 PoE	Class 4 PoE (PoE+)	Class 4 PoE (PoE+)
功耗	59 瓦 (230 伏交流电)	65 瓦 (230 伏交流电)	65 瓦 (230 伏交流电)
输入电压	100V 120V/200V 240V	100V 120V/200V 240V	100V 120V/200V 240V
端口	24个10/100/1000BASE-T端口 4个100M/1/10G SFP+ 端口  1个USB-C 控制台端口 1x USB Type-A 主机端口 1x OOBM 1个RJ-45 控制台端口	24个10/100/1000BASE-T 4类PoE端口, 支持每个端口最高30瓦 4个100M/1GSFP端口 支持 PoE 标准 IEEE 802.3af、802.3at  1个USB-C 控制台端口 1x USB Type-A 主机端口 1x OOBM 1个RJ-45 控制台端口	24个10/100/1000BASE-T 4类PoE端口, 支持每个端口最高30瓦 4个100M/1/10G SFP+ 端口 支持 PoE 标准 IEEE 802.3af、802.3at  1个USB-C 控制台端口 1x USB Type-A 主机端口 1x OOBM 1个RJ-45 控制台端口
延迟时间	1 Gbps: 2.28 μSec, 10 Gbps: 1.46 μSec	1 Gbps: 2.28 μSec, 10 Gbps: 1.46 μSec	1 Gbps: 2.28 μSec, 10 Gbps: 1.46 μSec
交换容量	128 Gbps	128 Gbps	128 Gbps
堆叠功能	8 个成员	8 个成员	8 个成员
吞吐量	高达 95.2 Mpps	高达 95.2 Mpps	高达 95.2 Mpps
内存和处理器	中央处理器: 四核 Arm Cortex-A72 处理器, 主频 1.8 GHz 记忆: 8 GB DDR4 闪光: 16 GB eMMC	中央处理器: 四核 Arm Cortex-A72 处理器, 主频 1.8 GHz 记忆: 8 GB DDR4 闪光: 16 GB eMMC	中央处理器: 四核 Arm Cortex-A72 处理器, 主频 1.8 GHz 记忆: 8 GB DDR4 闪光: 16 GB eMMC
电源名称	固定电源	固定电源, 高达 370 瓦的 Class 4 PoE 电源	固定电源, 高达 370 瓦的 Class 4 PoE 电源
PoE 功能	非 PoE 机型	370 瓦	370 瓦
管理特性	管理灵活, 支持 HPE Aruba Networking Central、易于使用的 Web GUI、CLI 和 HPE Aruba Networking Switch Multi-Edit Software	管理灵活, 支持 HPE Aruba Networking Central、易于使用的 Web GUI、CLI 和 HPE Aruba Networking Switch Multi-Edit Software	管理灵活, 支持 HPE Aruba Networking Central、易于使用的 Web GUI、CLI 和 HPE Aruba Networking Switch Multi-Edit Software
重量	上限 5.10 千克, 具体取决于机型	上限 5.10 千克, 具体取决于机型	上限 5.10 千克, 具体取决于机型
产品尺寸 (公制)	4.39 x 44.2 x 32.7 厘米	4.39 x 44.2 x 32.7 厘米	4.39 x 44.2 x 32.7 厘米
保修	有限终身保修。查看保修详情。	有限终身保修。查看保修详情。	有限终身保修。查看保修详情。

	HPE Aruba Networking CX 6200F 24G Class4 PoE 4SFP+ 370W Switch (JL725A)	HPE Aruba Networking CX 6200F 48G 4SFP Switch (S0M83A)	HPE Aruba Networking CX 6200F 48G 4SFP+ Switch (JL726A)
差异	Class 4 PoE (PoE+)	非 PoE	非 PoE
功耗	65 瓦 (230 伏交流电)	68 瓦 (230 伏交流电)	68 瓦 (230 伏交流电)
输入电压	100V 120V/200V 240V	100V 120V/200V 240V	100V 120V/200V 240V
端口	24个10/100/1000BASE-T 4类PoE端口 4个1/10G的SFP端口 支持 PoE 标准 IEEE 802.3af、802.3at  1 个 USB-C 控制台端口 1 x USB Type-A 主机端口 1 x OOBM 1 x 蓝牙适配器, 用于 CX Mobile 应用	48 个 10/100/1000BASE-T 端口 4个100M/1GSFP端口  1 个 USB-C 控制台端口 1 x USB Type-A 主机端口 1 x OOBM 1 个 RJ-45 控制台端口	48 个 10/100/1000BASE-T 端口 4个1/10G的SFP端口  1 个 USB-C 控制台端口 1 x USB Type-A 主机端口 1 x OOBM 1 x 蓝牙适配器, 用于 CX Mobile 应用
延迟时间	1 Gbps: 2.28 μSec, 10 Gbps: 1.46 μSec	1 Gbps: 2.28 μSec, 10 Gbps: 1.46 μSec	1 Gbps: 2.28 μSec, 10 Gbps: 1.46 μSec
交换容量	128 Gbps	176 Gbps	176 Gbps
堆叠功能	8 个成员	8 个成员	8 个成员
吞吐量	高达 95.2 Mpps	高达 130.9 Mpps	高达 130.9 Mpps
内存和处理器	中央处理器: 四核 Arm Cortex-A72 处理器, 主频 1.8 GHz 记忆: 8 GB DDR4 闪光: 16 GB eMMC	中央处理器: 四核 Arm Cortex-A72 处理器, 主频 1.8 GHz 记忆: 8 GB DDR4 闪光: 16 GB eMMC	中央处理器: 四核 Arm Cortex-A72 处理器, 主频 1.8 GHz 记忆: 8 GB DDR4 闪光: 16 GB eMMC
电源名称	固定电源 (500 瓦), 高达 370 瓦的 Class 4 PoE 电源	固定电源	固定电源 (200 瓦)
PoE 功能	370 瓦	非 PoE 机型	非 PoE 机型
管理特性	管理灵活, 支持 HPE Aruba Networking Central、易于使用的 Web GUI、CLI 和 HPE Aruba Networking Switch Multi-Edit Software	管理灵活, 支持 HPE Aruba Networking Central、易于使用的 Web GUI、CLI 和 HPE Aruba Networking Switch Multi-Edit Software	管理灵活, 支持 HPE Aruba Networking Central、易于使用的 Web GUI、CLI 和 HPE Aruba Networking Switch Multi-Edit Software
重量	4.90 千克	上限 5.10 千克, 具体取决于机型	4.45 千克
产品尺寸 (公制)	4.39 x 44.2 x 32.7 厘米	4.39 x 44.2 x 32.7 厘米	4.39 x 44.2 x 32.7 厘米
保修	有限终身保修。查看保修详情。	有限终身保修。查看保修详情。	有限终身保修。查看保修详情。

	HPE Aruba Networking CX 6200F 48G 4SFP+ Switch (JL726B)	HPE Aruba Networking CX 6200F 48G Class-4 PoE 4SFP 370W Switch (S0M84A)	HPE Aruba Networking CX 6200F 48G Class-4 PoE 4SFP 740W Switch (S0M85A)
差异	非 PoE	Class 4 PoE (PoE+)	Class 4 PoE (PoE+)
功耗	68 瓦 (230 伏交流电)	76 瓦 (230 伏交流电)	76 瓦 (230 伏交流电)
输入电压	100V 120V/200V 240V	100V 120V/200V 240V	100V 120V/200V 240V
端口	48 个 10/100/1000BASE-T 端口 4 个 100M/1/10G SFP+ 端口  1 个 USB-C 控制台端口 1 x USB Type-A 主机端口 1 x OOBM 1 个 RJ-45 控制台端口	48 个 10/100/1000BASE-T 类 4 级 PoE 端口, 支持每个端口最高 30 瓦 4 个 100M/1GSFP 端口 支持 PoE 标准 IEEE 802.3af、802.3at  1 个 USB-C 控制台端口 1 x USB Type-A 主机端口 1 x OOBM 1 个 RJ-45 控制台端口	48 个 10/100/1000BASE-T 类 4 级 PoE 端口, 支持每个端口最高 30 瓦 4 个 100M/1GSFP 端口 支持 PoE 标准 IEEE 802.3af、802.3at  1 个 USB-C 控制台端口 1 x USB Type-A 主机端口 1 x OOBM 1 个 RJ-45 控制台端口
延迟时间	1 Gbps: 2.28 μSec, 10 Gbps: 1.46 μSec	1 Gbps: 2.28 μSec, 10 Gbps: 1.46 μSec	1 Gbps: 2.28 μSec, 10 Gbps: 1.46 μSec
交换容量	176 Gbps	176 Gbps	176 Gbps
堆叠功能	8 个成员	8 个成员	8 个成员
吞吐量	高达 130.9 Mpps	高达 130.9 Mpps	高达 130.9 Mpps
内存和处理器	中央处理器: 四核 Arm Cortex-A72 处理器, 主频 1.8 GHz 记忆: 8 GB DDR4 闪光: 16 GB eMMC	中央处理器: 四核 Arm Cortex-A72 处理器, 主频 1.8 GHz 记忆: 8 GB DDR4 闪光: 16 GB eMMC	中央处理器: 四核 Arm Cortex-A72 处理器, 主频 1.8 GHz 记忆: 8 GB DDR4 闪光: 16 GB eMMC
电源名称	固定电源	固定电源, 高达 370 瓦的 Class 4 PoE 电源	固定电源, 高达 740 瓦的 Class 4 PoE 电源
PoE 功能	非 PoE 机型	370 瓦	740 瓦
管理特性	管理灵活, 支持 HPE Aruba Networking Central、易于使用的 Web GUI、CLI 和 HPE Aruba Networking Switch Multi-Edit Software	管理灵活, 支持 HPE Aruba Networking Central、易于使用的 Web GUI、CLI 和 HPE Aruba Networking Switch Multi-Edit Software	管理灵活, 支持 HPE Aruba Networking Central、易于使用的 Web GUI、CLI 和 HPE Aruba Networking Switch Multi-Edit Software
重量	上限 5.10 千克, 具体取决于机型	上限 5.10 千克, 具体取决于机型	上限 5.10 千克, 具体取决于机型
产品尺寸 (公制)	4.39 x 44.2 x 32.7 厘米	4.39 x 44.2 x 32.7 厘米	4.39 x 44.2 x 32.7 厘米
保修	有限终身保修。查看保修详情。	有限终身保修。查看保修详情。	有限终身保修。查看保修详情。

	HPE Aruba Networking CX 6200F 48G Class-4 PoE 4SFP+ 370W Switch (JL727B)	HPE Aruba Networking CX 6200F 48G Class-4 PoE 4SFP+ 740W Switch (JL728B)	HPE Aruba Networking CX 6200F 48G Class4 PoE 4SFP+ 370W Switch (JL727A)
差异	Class 4 PoE (PoE+)	Class 4 PoE (PoE+)	Class 4 PoE (PoE+)
功耗	76 瓦 (230 伏交流电)	76 瓦 (230 伏交流电)	76 瓦 (230 伏交流电)
输入电压	100V 120V/200V 240V	100V 120V/200V 240V	100V 120V/200V 240V
端口	48个10/100/1000BASE-T类4级PoE端口，支持每个端口最高30瓦 4个100M/1/10G SFP+ 端口支持 PoE 标准 IEEE 802.3af、802.3at  1个USB-C 控制台端口 1x USB Type-A 主机端口 1x OOBM 1个RJ-45 控制台端口	48个10/100/1000BASE-T类4级PoE端口，支持每个端口最高30瓦 4个100M/1/10G SFP+ 端口支持 PoE 标准 IEEE 802.3af、802.3at  1个USB-C 控制台端口 1x USB Type-A 主机端口 1x OOBM 1个RJ-45 控制台端口	48个10/100/1000BASE-T 4类PoE端口 4个1/10G的SFP端口 支持 PoE 标准 IEEE 802.3af、802.3at  1个USB-C 控制台端口 1x USB Type-A 主机端口 1x OOBM 1x 蓝牙适配器，用于 CX Mobile 应用
延迟时间	1 Gbps: 2.28 μSec, 10 Gbps: 1.46 μSec	1 Gbps: 2.28 μSec, 10 Gbps: 1.46 μSec	1 Gbps: 2.28 μSec, 10 Gbps: 1.46 μSec
交换容量	176 Gbps	176 Gbps	176 Gbps
堆叠功能	8 个成员	8 个成员	8 个成员
吞吐量	高达 130.9 Mpps	高达 130.9 Mpps	高达 130.9 Mpps
内存和处理器	中央处理器：四核 Arm Cortex-A72 处理器，主频 1.8 GHz 记忆：8 GB DDR4 闪光：16 GB eMMC	中央处理器：四核 Arm Cortex-A72 处理器，主频 1.8 GHz 记忆：8 GB DDR4 闪光：16 GB eMMC	中央处理器：四核 Arm Cortex-A72 处理器，主频 1.8 GHz 记忆：8 GB DDR4 闪光：16 GB eMMC
电源名称	固定电源， 高达 370 瓦的 Class 4 PoE 电源	固定电源， 高达 740 瓦的 Class 4 PoE 电源	固定电源 (500 瓦)， 高达 370 瓦的 Class 4 PoE 电源
PoE 功能	370 瓦	740 瓦	370 瓦
管理特性	管理灵活，支持 HPE Aruba Networking Central、易于使用的 Web GUI、CLI 和 HPE Aruba Networking Switch Multi-Edit Software	管理灵活，支持 HPE Aruba Networking Central、易于使用的 Web GUI、CLI 和 HPE Aruba Networking Switch Multi-Edit Software	管理灵活，支持 HPE Aruba Networking Central、易于使用的 Web GUI、CLI 和 HPE Aruba Networking Switch Multi-Edit Software
重量	上限 5.10 千克，具体取决于机型	上限 5.10 千克，具体取决于机型	5.05 千克
产品尺寸 (公制)	4.39 x 44.2 x 32.7 厘米	4.39 x 44.2 x 32.7 厘米	4.39 x 44.2 x 32.7 厘米
保修	有限终身保修。查看保修详情。	有限终身保修。查看保修详情。	有限终身保修。查看保修详情。

	HPE Aruba Networking CX 6200F 48G Class4 PoE 4SFP+ 740W Switch (JL728A)	HPE Aruba Networking CX 6200M 24G 4SFP+ Switch (R8Q67A)	HPE Aruba Networking CX 6200M 24G Class4 PoE 4SFP+ Switch (R8Q68A)
差异	Class 4 PoE (PoE+)	非 PoE	Class 4 PoE (PoE+)
功耗	76 瓦 (230 伏交流电)	75 瓦 (230 伏交流电)	76 瓦 (230 伏交流电)
输入电压	100V 120V/200V 240V	100V 120V/200V 240V	100V 120V/200V 240V
端口	48个10/100/1000BASE-T 4类PoE端口 4个1/10G的SFP端口 支持 PoE 标准 IEEE 802.3af、802.3at  1 个 USB-C 控制台端口 1 x USB Type-A 主机端口 1 x OOBM 1 x 蓝牙适配器, 用于 CX Mobile 应用	24个10/100/1000BASE-T端口 4个1/10GSFP端口 (2个 LRM;2个LRM/MACSec 256)  1 个 USB-C 控制台端口 1 x USB Type-A 主机端口 1 x OOBM 1 个 RJ-45 控制台端口	24个10/100/1000BASE-T 4类PoE端口, 支持每个端口最高30瓦 4个1/10GSFP端口 (2个 LRM;2个LRM/MACSec 256) 支持 PoE 标准 IEEE 802.3af、802.3at  1 个 USB-C 控制台端口 1 x USB Type-A 主机端口 1 x OOBM 1 个 RJ-45 控制台端口
延迟时间	1 Gbps: 2.28 μSec, 10 Gbps: 1.46 μSec	1 Gbps: 2.28 μSec, 10 Gbps: 1.46 μSec	1 Gbps: 2.28 μSec, 10 Gbps: 1.46 μSec
交换容量	176 Gbps	128 Gbps	128 Gbps
堆叠功能	8 个成员	8 个成员	8 个成员
吞吐率	高达 130.9 Mpps	高达 95.2 Mpps	高达 95.2 Mpps
内存和处理器	中央处理器: 四核 Arm Cortex-A72 处理器, 主频 1.8 GHz 记忆: 8 GB DDR4 闪光: 16 GB eMMC	中央处理器: 四核 Arm Cortex-A72 处理器, 主频 1.8 GHz 记忆: 8 GB DDR4 闪光: 16 GB eMMC	中央处理器: 四核 Arm Cortex-A72 处理器, 主频 1.8 GHz 记忆: 8 GB DDR4 闪光: 16 GB eMMC
电源名称	固定电源 (950 瓦), 高达 740 瓦的 Class 4 PoE 电源	2 个支持现场更换的可热交换电源插槽; 至少需要 1 个电源 (单独订购); 支持 JL085A PSU	2个可现场更换、可热插拔电源插槽 1个最低电源需求 (另购) 支持的电源 JL086A JL087A 最大PoE功率: 740瓦
PoE 功能	740 瓦	非 PoE 机型	740 瓦
管理特性	管理灵活, 支持 HPE Aruba Networking Central、易于使用的 Web GUI、CLI 和 HPE Aruba Networking Switch Multi-Edit Software	管理灵活, 支持 HPE Aruba Networking Central、易于使用的 Web GUI、CLI 和 HPE Aruba Networking Switch Multi-Edit Software	管理灵活, 支持 HPE Aruba Networking Central、易于使用的 Web GUI、CLI 和 HPE Aruba Networking Switch Multi-Edit Software
重量	5.10 千克	6.01 千克	6.01 千克
产品尺寸 (公制)	4.39 x 44.2 x 32.7 厘米	4.39 x 44.247 x 38.38 厘米	4.39 x 44.247 x 38.38 厘米
保修	有限终身保修。查看保修详情。	有限终身保修。查看保修详情。	有限终身保修。查看保修详情。

	HPE Aruba Networking CX 6200M 36G 12SR5 Class6 PoE 4SFP+ Switch (R8Q71A)	HPE Aruba Networking CX 6200M 48G 4SFP+ Switch (R8Q69A)	HPE Aruba Networking CX 6200M 48G Class4 PoE 4SFP+ Switch (R8Q70A)
差异	Class 4 PoE (PoE+)	非 PoE	Class 4 PoE (PoE+)
功耗	76 瓦 (230 伏交流电)	75 瓦 (230 伏交流电)	76 瓦 (230 伏交流电)
输入电压	100V 120V/200V 240V	100V 120V/200V 240V	100V 120V/200V 240V
端口	36个10/100/1000BASE-T类6级PoE端口, 支持每个端口最高60瓦 12个HPE Smart Rate 1/2.5/5G BaseT Class 6 PoE端口, 支持每个端口最高60瓦 4个1/10GSFP端口 (2个LRM;2个LRM/MACSec 256) 支持 PoE 标准 IEEE 802.3af、802.3at、802.3bt (最高 60W)  1 个 USB-C 控制台端口 1 x USB Type-A 主机端口 1 x OOBM 1 个 RJ-45 控制台端口	48 个 10/100/1000BASE-T 端口 4个1/10GSFP端口 (2个LRM;2个LRM/MACSec 256)  1 个 USB-C 控制台端口 1 x USB Type-A 主机端口 1 x OOBM 1 个 RJ-45 控制台端口	48个10/100/1000BASE-T类4级PoE端口, 支持每个端口最高30瓦 4个1/10GSFP端口 (2个LRM;2个LRM/MACSec 256) 支持 PoE 标准 IEEE 802.3af、802.3at  1 个 USB-C 控制台端口 1 x USB Type-A 主机端口 1 x OOBM 1 个 RJ-45 控制台端口
延迟时间	1 Gbps: 2.28 $\mu$ Sec, 10 Gbps: 1.46 $\mu$ Sec	1 Gbps: 2.28 $\mu$ Sec, 10 Gbps: 1.46 $\mu$ Sec	1 Gbps: 2.28 $\mu$ Sec, 10 Gbps: 1.46 $\mu$ Sec
交换容量	272 Gbps	176 Gbps	176 Gbps
堆叠功能	8 个成员	8 个成员	8 个成员
吞吐量	高达 130.9 Mpps	高达 130.9 Mpps	高达 130.9 Mpps
内存和处理器	中央处理器: 四核 Arm Cortex-A72 处理器, 主频 1.8 GHz 记忆: 8 GB DDR4 闪光: 16 GB eMMC	中央处理器: 四核 Arm Cortex-A72 处理器, 主频 1.8 GHz 记忆: 8 GB DDR4 闪光: 16 GB eMMC	中央处理器: 四核 Arm Cortex-A72 处理器, 主频 1.8 GHz 记忆: 8 GB DDR4 闪光: 16 GB eMMC
电源名称	2个可现场更换、可热插拔电源插槽 1个最低电源需求 (另购) 支持的电源 JL086A JL087A 最大PoE功率: 1440W	2 个支持现场更换的可热交换电源插槽; 至少需要 1 个电源 (单独订购); 支持 JL085A PSU	2个可现场更换、可热插拔电源插槽 1个最低电源需求 (另购) 支持的电源 JL086A JL087A 最大PoE功率: 1440W
PoE 功能	1440 瓦	非 PoE 机型	1440 瓦
管理特性	管理灵活, 支持 HPE Aruba Networking Central、易于使用的 Web GUI、CLI 和 HPE Aruba Networking Switch Multi-Edit Software	管理灵活, 支持 HPE Aruba Networking Central、易于使用的 Web GUI、CLI 和 HPE Aruba Networking Switch Multi-Edit Software	管理灵活, 支持 HPE Aruba Networking Central、易于使用的 Web GUI、CLI 和 HPE Aruba Networking Switch Multi-Edit Software
重量	6.01 千克	6.01 千克	6.01 千克
产品尺寸 (公制)	4.39 x 44.247 x 38.38 厘米	4.39 x 44.247 x 38.38 厘米	4.39 x 44.247 x 38.38 厘米
保修	有限终身保修。查看保修详情。	有限终身保修。查看保修详情。	有限终身保修。查看保修详情。

## 相关选项

可用选项如下:

SKU	描述
<b>适配器</b>	
S1H23A	HPE Aruba Networking CX Switch Bluetooth Adapter
<b>HPE Aruba Networking 软件</b>	
JL639AAE	HPE Aruba Networking NetEdit Single Node 1yr Subscription E-STU
JL640AAE	HPE Aruba Networking NetEdit Single Node 3yr Subscription E-STU
<b>交换机</b>	
JL258A	HPE Aruba Networking 2930F 8G PoE+ 2SFP+ Switch
JL693A	HPE Aruba Networking 2930F 12G PoE+ 2G/2SFP+ Switch
<b>安装工具包</b>	
J9583B	HPE Aruba Networking X414 1U Universal 4-post Rack Mount Kit
<b>收发器</b>	
J4860D	HPE Aruba Networking 1G SFP LC LH 70km SMF Transceiver
JL746A	HPE Aruba Networking 1G SFP LC LX 10km SMF TAA Transceiver
J4859D	HPE Aruba Networking 1G SFP LC LX 10km SMF Transceiver
JL745A	HPE Aruba Networking 1G SFP LC SX 500m MMF TAA Transceiver
J4858D	HPE Aruba Networking 1G SFP LC SX 500m OM2 MMF Transceiver
JL747B	HPE Aruba Networking 1G SFP RJ45 100m Cat5e TAA Transceiver
J8177E	HPE Aruba Networking 1G SFP RJ45 100m Cat5e Transceiver
JL747A	HPE Aruba Networking 1G SFP RJ45 T 100m Cat5e TAA Transceiver
S2P32A	HPE Aruba Networking 10G ER SFP+ LC 40km SMF C-Class Transceiver
S2P31A	HPE Aruba Networking 10G LR SFP+ LC 10km SMF C-Class Transceiver
J9153D	HPE Aruba Networking 10G SFP+ LC ER 40km SMF Transceiver
JL749A	HPE Aruba Networking 10G SFP+ LC LR 10km SMF TAA Transceiver
J9151E	HPE Aruba Networking 10G SFP+ LC LR 10km SMF Transceiver
J9152D	HPE Aruba Networking 10G SFP+ LC LRM 220m OM2 MMF Transceiver
JL748A	HPE Aruba Networking 10G SFP+ LC SR 300m MMF TAA Transceiver
J9150D	HPE Aruba Networking 10G SFP+ LC SR 300m OM3 MMF Transceiver
J9281D	HPE Aruba Networking 10G SFP+ to SFP+ 1m Direct Attach Copper Cable
J9283D	HPE Aruba Networking 10G SFP+ to SFP+ 3m Direct Attach Copper Cable

R9X54A	HPE Aruba Networking 10G SMF Simplex LC BiDi 40km-Downstream 1330/1270 Transceiver
R9X55A	HPE Aruba Networking 10G SMF Simplex LC BiDi 40km-Upstream 1270/1330 Transceiver
S2P30A	HPE Aruba Networking 10G SR SFP+ LC 400m OM4 MMF C-Class Transceiver
JL563C	HPE Aruba Networking 10GBASE-T SFP+ RJ45 30m Cat6A Transceiver
J9054D	HPE Aruba Networking 100M SFP LC FX 2km MMF Transceiver

### 电源管理选件

JL085A	HPE Aruba Networking X371 12VDC 250W 100-240VAC Power Supply
JL086A	HPE Aruba Networking X372 54VDC 680W 100-240VAC Power Supply
JL087A	HPE Aruba Networking X372 54VDC 1050W 110-240VAC Power Supply

### 私有云和混合云

R6U98AAE	HPE Aruba Networking Central On-Premises Switch Class2 Advanced 1-year Subscription E-STU
R6U99AAE	HPE Aruba Networking Central On-Premises Switch Class2 Advanced 3-year Subscription E-STU
R6V00AAE	HPE Aruba Networking Central On-Premises Switch Class2 Advanced 5-year Subscription E-STU
R6V01AAE	HPE Aruba Networking Central On-Premises Switch Class2 Advanced 7-year Subscription E-STU
R6V02AAE	HPE Aruba Networking Central On-Premises Switch Class2 Advanced 10-year Subscription E-STU
JZ530AAE	HPE Aruba Networking Central Switch Class2 Advanced 1-year Subscription E-STU
JZ531AAE	HPE Aruba Networking Central Switch Class2 Advanced 3-year Subscription E-STU
JZ532AAE	HPE Aruba Networking Central Switch Class2 Advanced 5-year Subscription E-STU
JZ533AAE	HPE Aruba Networking Central Switch Class2 Advanced 7-year Subscription E-STU
JZ534AAE	HPE Aruba Networking Central Switch Class2 Advanced 10-year Subscription E-STU
Q9Y73AAE	HPE Aruba Networking Central Switch Class-2 Foundation 1 year Subscription E-STU
Q9Y74AAE	HPE Aruba Networking Central Switch Class-2 Foundation 3 year Subscription E-STU
Q9Y75AAE	HPE Aruba Networking Central Switch Class-2 Foundation 5 year Subscription E-STU
Q9Y76AAE	HPE Aruba Networking Central Switch Class-2 Foundation 7 year Subscription E-STU
Q9Y77AAE	HPE Aruba Networking Central Switch Class-2 Foundation 10 year Subscription E-STU
R6U78AAE	HPE Aruba Networking Central on Prem Switch Class-2 Foundation 1 year Subscription E-STU
R6U79AAE	HPE Aruba Networking Central on Prem Switch Class-2 Foundation 3 year Subscription E-STU
R6U80AAE	HPE Aruba Networking Central on Prem Switch Class-2 Foundation 5 year Subscription E-STU
R6U81AAE	HPE Aruba Networking Central on Prem Switch Class-2 Foundation 7 year Subscription E-STU
R6U82AAE	HPE Aruba Networking Central on Prem Switch Class-2 Foundation 10 year Subscription E-STU

### 线缆套件

R8Q73A	HPE Aruba Networking CX 6200F 12-port Cable Guard
R9J32A	HPE Aruba Networking USB-A reversible to USB-C PC-to-Switch 3m Cable
R9J33A	HPE Aruba Networking USB-C to USB-C PC-to-Switch 3m Cable
R9G48B	HPE Aruba Networking USBA-RJ45 PC-to-Switch PIN6TX-3RX 2.5m Cable

R8Z87A	HPE Aruba Networking USB-A-RJ45 PIN3TX-6RX 2.5m Cable
--------	---

JL448A	HPE Aruba Networking X2C2 RJ45 to DB9 Console Cable
--------	---

## 风扇选件

JL669B	HPE Aruba Networking X751 Front to Back Fan Tray
--------	--

## 相关服务

以下服务适用于这些系列:

SKU	描述
<b>技术服务</b>	
H92N7E	HPE Aruba Networking 1Y 24x7 Technical Support 6200F 12G SVC
H90J3E	HPE Aruba Networking 1Y 24x7 Technical Support 6200M 24G PoE SVC
H89V2E	HPE Aruba Networking 1Y 24x7 Technical Support 6200M 24G SVC
H91Z6E	HPE Aruba Networking 1Y 24x7 Technical Support 6200M 36G PoE SVC
H91L5E	HPE Aruba Networking 1Y 24x7 Technical Support 6200M 48G PoE SVC
H90X4E	HPE Aruba Networking 1Y 24x7 Technical Support 6200M 48G SVC
H92V0E	HPE Aruba Networking 1Y 24x7 Technical Support Volume Tier 26200F 12G SVC
H90Q6E	HPE Aruba Networking 1Y 24x7 Technical Support Volume Tier 26200M 24G PoE SVC
H90B5E	HPE Aruba Networking 1Y 24x7 Technical Support Volume Tier 26200M 24G SVC
H92F9E	HPE Aruba Networking 1Y 24x7 Technical Support Volume Tier 26200M 36G PoE SVC
H91S8E	HPE Aruba Networking 1Y 24x7 Technical Support Volume Tier 26200M 48G PoE SVC
H91D7E	HPE Aruba Networking 1Y 24x7 Technical Support Volume Tier 26200M 48G SVC
H92Q0E	HPE Aruba Networking 3Y 24x7 Technical Support 6200F 12G SVC
H90K6E	HPE Aruba Networking 3Y 24x7 Technical Support 6200M 24G PoE SVC
H89W5E	HPE Aruba Networking 3Y 24x7 Technical Support 6200M 24G SVC
H92A9E	HPE Aruba Networking 3Y 24x7 Technical Support 6200M 36G PoE SVC
H91M8E	HPE Aruba Networking 3Y 24x7 Technical Support 6200M 48G PoE SVC
H90Y7E	HPE Aruba Networking 3Y 24x7 Technical Support 6200M 48G SVC
H92W5E	HPE Aruba Networking 3Y 24x7 Technical Support Volume Tier 26200F 12G SVC
H90S1E	HPE Aruba Networking 3Y 24x7 Technical Support Volume Tier 26200M 24G PoE SVC
H90D0E	HPE Aruba Networking 3Y 24x7 Technical Support Volume Tier 26200M 24G SVC
H92H4E	HPE Aruba Networking 3Y 24x7 Technical Support Volume Tier 26200M 36G PoE SVC
H91U3E	HPE Aruba Networking 3Y 24x7 Technical Support Volume Tier 26200M 48G PoE SVC
H91F2E	HPE Aruba Networking 3Y 24x7 Technical Support Volume Tier 26200M 48G SVC

H92S6E	HPE Aruba Networking 5Y 24x7 Technical Support 6200F 12G SVC
H90N2E	HPE Aruba Networking 5Y 24x7 Technical Support 6200M 24G PoE SVC
H89Z1E	HPE Aruba Networking 5Y 24x7 Technical Support 6200M 24G SVC
H92D5E	HPE Aruba Networking 5Y 24x7 Technical Support 6200M 36G PoE SVC
H91Q4E	HPE Aruba Networking 5Y 24x7 Technical Support 6200M 48G PoE SVC
H91B3E	HPE Aruba Networking 5Y 24x7 Technical Support 6200M 48G SVC
H92Z5E	HPE Aruba Networking 5Y 24x7 Technical Support Volume Tier 26200F 12G SVC
H90V1E	HPE Aruba Networking 5Y 24x7 Technical Support Volume Tier 26200M 24G PoE SVC
H90G0E	HPE Aruba Networking 5Y 24x7 Technical Support Volume Tier 26200M 24G SVC
H92L4E	HPE Aruba Networking 5Y 24x7 Technical Support Volume Tier 26200M 36G PoE SVC
H91X3E	HPE Aruba Networking 5Y 24x7 Technical Support Volume Tier 26200M 48G PoE SVC
H91J2E	HPE Aruba Networking 5Y 24x7 Technical Support Volume Tier 26200M 48G SVC
H8XE6E	HPE Aruba Networking 6xxx and 8xxx Install Chassis Switch SVC
H92N1E	HPE Aruba Networking Foundational Care 1Y 4HR Exch 6200F 12G SVC
HR0V9E	HPE Aruba Networking Foundational Care 1Y 4HR Exch 6200F 24G POE Switch SVC
HR0G8E	HPE Aruba Networking Foundational Care 1Y 4HR Exch 6200F 24G Switch SVC
HL2L0E	HPE Aruba Networking Foundational Care 1Y 4HR Exch 6200F 48G 740 POE Switch SVC
HL2B5E	HPE Aruba Networking Foundational Care 1Y 4HR Exch 6200F 48G POE Switch SVC
HR1E4E	HPE Aruba Networking Foundational Care 1Y 4HR Exch 6200F 48G Switch SVC
H90H7E	HPE Aruba Networking Foundational Care 1Y 4HR Exch 6200M 24G PoE SVC
H89U6E	HPE Aruba Networking Foundational Care 1Y 4HR Exch 6200M 24G SVC
H91Z0E	HPE Aruba Networking Foundational Care 1Y 4HR Exch 6200M 36G PoE SVC
H91K9E	HPE Aruba Networking Foundational Care 1Y 4HR Exch 6200M 48G PoE SVC
H90W8E	HPE Aruba Networking Foundational Care 1Y 4HR Exch 6200M 48G SVC
H92U5E	HPE Aruba Networking Foundational Care 1Y 4HR Exch Vol T1 6200F 12G SVC
HL1V5E	HPE Aruba Networking Foundational Care 1Y 4HR Exch Vol T1 6200F 24G POE Switch SVC
HR0P2E	HPE Aruba Networking Foundational Care 1Y 4HR Exch Vol T1 6200F 24G Switch SVC
HL2S4E	HPE Aruba Networking Foundational Care 1Y 4HR Exch Vol T1 6200F 48G 740 POE Switch SVC
HR1Q7E	HPE Aruba Networking Foundational Care 1Y 4HR Exch Vol T1 6200F 48G POE Switch SVC
HL1Z4E	HPE Aruba Networking Foundational Care 1Y 4HR Exch Vol T1 6200F 48G Switch SVC
H90Q1E	HPE Aruba Networking Foundational Care 1Y 4HR Exch Vol T1 6200M 24G PoE SVC
H90B0E	HPE Aruba Networking Foundational Care 1Y 4HR Exch Vol T1 6200M 24G SVC
H92F4E	HPE Aruba Networking Foundational Care 1Y 4HR Exch Vol T1 6200M 36G PoE SVC
H91S3E	HPE Aruba Networking Foundational Care 1Y 4HR Exch Vol T1 6200M 48G PoE SVC
H91D2E	HPE Aruba Networking Foundational Care 1Y 4HR Exch Vol T1 6200M 48G SVC
H92U6E	HPE Aruba Networking Foundational Care 1Y 4HR Exch Vol T2 6200F 12G SVC

HL1V6E	HPE Aruba Networking Foundational Care 1Y 4HR Exch Vol T2 6200F 24G POE Switch SVC
HR0P3E	HPE Aruba Networking Foundational Care 1Y 4HR Exch Vol T2 6200F 24G Switch SVC
HL2S5E	HPE Aruba Networking Foundational Care 1Y 4HR Exch Vol T2 6200F 48G 740 POE Switch SVC
HR1Q8E	HPE Aruba Networking Foundational Care 1Y 4HR Exch Vol T2 6200F 48G POE Switch SVC
HL1Z5E	HPE Aruba Networking Foundational Care 1Y 4HR Exch Vol T2 6200F 48G Switch SVC
H90Q2E	HPE Aruba Networking Foundational Care 1Y 4HR Exch Vol T2 6200M 24G PoE SVC
H90B1E	HPE Aruba Networking Foundational Care 1Y 4HR Exch Vol T2 6200M 24G SVC
H92F5E	HPE Aruba Networking Foundational Care 1Y 4HR Exch Vol T2 6200M 36G PoE SVC
H91S4E	HPE Aruba Networking Foundational Care 1Y 4HR Exch Vol T2 6200M 48G PoE SVC
H91D3E	HPE Aruba Networking Foundational Care 1Y 4HR Exch Vol T2 6200M 48G SVC
H92N5E	HPE Aruba Networking Foundational Care 1Y 4HR Onsite 6200F 12G SVC
HR0W3E	HPE Aruba Networking Foundational Care 1Y 4HR Onsite 6200F 24G POE Switch SVC
HR0H2E	HPE Aruba Networking Foundational Care 1Y 4HR Onsite 6200F 24G Switch SVC
HL2L4E	HPE Aruba Networking Foundational Care 1Y 4HR Onsite 6200F 48G 740 POE Switch SVC
HL2B9E	HPE Aruba Networking Foundational Care 1Y 4HR Onsite 6200F 48G POE Switch SVC
HR1E8E	HPE Aruba Networking Foundational Care 1Y 4HR Onsite 6200F 48G Switch SVC
H90J1E	HPE Aruba Networking Foundational Care 1Y 4HR Onsite 6200M 24G PoE SVC
H89V0E	HPE Aruba Networking Foundational Care 1Y 4HR Onsite 6200M 24G SVC
H91Z4E	HPE Aruba Networking Foundational Care 1Y 4HR Onsite 6200M 36G PoE SVC
H91L3E	HPE Aruba Networking Foundational Care 1Y 4HR Onsite 6200M 48G PoE SVC
H90X2E	HPE Aruba Networking Foundational Care 1Y 4HR Onsite 6200M 48G SVC
HR0W4E	HPE Aruba Networking Foundational Care 1Y 4HR Onsite CDMR 6200F 24G POE Switch SVC
HR0H3E	HPE Aruba Networking Foundational Care 1Y 4HR Onsite CDMR 6200F 24G Switch SVC
HL2L5E	HPE Aruba Networking Foundational Care 1Y 4HR Onsite CDMR 6200F 48G 740 POE Switch SVC
HL2C0E	HPE Aruba Networking Foundational Care 1Y 4HR Onsite CDMR 6200F 48G POE Switch SVC
HR1E9E	HPE Aruba Networking Foundational Care 1Y 4HR Onsite CDMR 6200F 48G Switch SVC
HR0W2E	HPE Aruba Networking Foundational Care 1Y 4HR Onsite HW Only 6200F 24G POE Switch SVC
HR0H1E	HPE Aruba Networking Foundational Care 1Y 4HR Onsite HW Only 6200F 24G Switch SVC
HL2L3E	HPE Aruba Networking Foundational Care 1Y 4HR Onsite HW Only 6200F 48G 740 POE Switch SVC
HL2B8E	HPE Aruba Networking Foundational Care 1Y 4HR Onsite HW Only 6200F 48G POE Switch SVC
HR1E7E	HPE Aruba Networking Foundational Care 1Y 4HR Onsite HW Only 6200F 48G Switch SVC
H92N4E	HPE Aruba Networking Foundational Care 1Y 4HR Onsite Hardware Only 6200F 12G SVC
H90J0E	HPE Aruba Networking Foundational Care 1Y 4HR Onsite Hardware Only 6200M 24G PoE SVC
H89U9E	HPE Aruba Networking Foundational Care 1Y 4HR Onsite Hardware Only 6200M 24G SVC
H91Z3E	HPE Aruba Networking Foundational Care 1Y 4HR Onsite Hardware Only 6200M 36G PoE SVC
H91L2E	HPE Aruba Networking Foundational Care 1Y 4HR Onsite Hardware Only 6200M 48G PoE SVC

H90X1E	HPE Aruba Networking Foundational Care 1Y 4HR Onsite Hardware Only 6200M 48G SVC
H92N6E	HPE Aruba Networking Foundational Care 1Y 24x7 CDMR 6200F 12G SVC
H90J2E	HPE Aruba Networking Foundational Care 1Y 24x7 CDMR 6200M 24G PoE SVC
H89V1E	HPE Aruba Networking Foundational Care 1Y 24x7 CDMR 6200M 24G SVC
H91Z5E	HPE Aruba Networking Foundational Care 1Y 24x7 CDMR 6200M 36G PoE SVC
H91L4E	HPE Aruba Networking Foundational Care 1Y 24x7 CDMR 6200M 48G PoE SVC
H90X3E	HPE Aruba Networking Foundational Care 1Y 24x7 CDMR 6200M 48G SVC
H73N7E	HPE Aruba Networking Foundational Care 1Y CTR 6200F 24G PoE SFP+ SVC
H70V2E	HPE Aruba Networking Foundational Care 1Y CTR 6200F 24G PoE SVC
H72Z6E	HPE Aruba Networking Foundational Care 1Y CTR 6200F 24G SFP+ SVC
H70G0E	HPE Aruba Networking Foundational Care 1Y CTR 6200F 24G SVC
H71X4E	HPE Aruba Networking Foundational Care 1Y CTR 6200F 48G PoE 370W SVC
H72L5E	HPE Aruba Networking Foundational Care 1Y CTR 6200F 48G PoE 740W SVC
H74Q9E	HPE Aruba Networking Foundational Care 1Y CTR 6200F 48G PoE SFP+ 370W SVC
H74B8E	HPE Aruba Networking Foundational Care 1Y CTR 6200F 48G SFP+ SVC
H71J3E	HPE Aruba Networking Foundational Care 1Y CTR 6200F 48G SVC
H73N8E	HPE Aruba Networking Foundational Care 1Y CTR CDMR 6200F 24G PoE SFP+ SVC
H70V3E	HPE Aruba Networking Foundational Care 1Y CTR CDMR 6200F 24G PoE SVC
H72Z7E	HPE Aruba Networking Foundational Care 1Y CTR CDMR 6200F 24G SFP+ SVC
H70G1E	HPE Aruba Networking Foundational Care 1Y CTR CDMR 6200F 24G SVC
H71X5E	HPE Aruba Networking Foundational Care 1Y CTR CDMR 6200F 48G PoE 370W SVC
H72L6E	HPE Aruba Networking Foundational Care 1Y CTR CDMR 6200F 48G PoE 740W SVC
H74R0E	HPE Aruba Networking Foundational Care 1Y CTR CDMR 6200F 48G PoE SFP+ 370W SVC
H74B9E	HPE Aruba Networking Foundational Care 1Y CTR CDMR 6200F 48G SFP+ SVC
H71J4E	HPE Aruba Networking Foundational Care 1Y CTR CDMR 6200F 48G SVC
H92N2E	HPE Aruba Networking Foundational Care 1Y NBD 6200F 12G SVC
H90H8E	HPE Aruba Networking Foundational Care 1Y NBD 6200M 24G PoE SVC
H89U7E	HPE Aruba Networking Foundational Care 1Y NBD 6200M 24G SVC
H91Z1E	HPE Aruba Networking Foundational Care 1Y NBD 6200M 36G PoE SVC
H91L0E	HPE Aruba Networking Foundational Care 1Y NBD 6200M 48G PoE SVC
H90W9E	HPE Aruba Networking Foundational Care 1Y NBD 6200M 48G SVC
H92N3E	HPE Aruba Networking Foundational Care 1Y NBD CDMR 6200F 12G SVC
H90H9E	HPE Aruba Networking Foundational Care 1Y NBD CDMR 6200M 24G PoE SVC
H89U8E	HPE Aruba Networking Foundational Care 1Y NBD CDMR 6200M 24G SVC
H91Z2E	HPE Aruba Networking Foundational Care 1Y NBD CDMR 6200M 36G PoE SVC
H91L1E	HPE Aruba Networking Foundational Care 1Y NBD CDMR 6200M 48G PoE SVC

H90X0E	HPE Aruba Networking Foundational Care 1Y NBD CDMR 6200M 48G SVC
H92M9E	HPE Aruba Networking Foundational Care 1Y NBD Exch 6200F 12G SVC
HR0V7E	HPE Aruba Networking Foundational Care 1Y NBD Exch 6200F 24G POE Switch SVC
H73M8E	HPE Aruba Networking Foundational Care 1Y NBD Exch 6200F 24G PoE SFP+ SVC
H70U3E	HPE Aruba Networking Foundational Care 1Y NBD Exch 6200F 24G PoE SVC
H72Y7E	HPE Aruba Networking Foundational Care 1Y NBD Exch 6200F 24G SFP+ SVC
H70F1E	HPE Aruba Networking Foundational Care 1Y NBD Exch 6200F 24G SVC
HR0G6E	HPE Aruba Networking Foundational Care 1Y NBD Exch 6200F 24G Switch SVC
HL2K8E	HPE Aruba Networking Foundational Care 1Y NBD Exch 6200F 48G 740 POE Switch SVC
HL2B3E	HPE Aruba Networking Foundational Care 1Y NBD Exch 6200F 48G POE Switch SVC
H71W5E	HPE Aruba Networking Foundational Care 1Y NBD Exch 6200F 48G PoE 370W SVC
H72K6E	HPE Aruba Networking Foundational Care 1Y NBD Exch 6200F 48G PoE 740W SVC
H74Q0E	HPE Aruba Networking Foundational Care 1Y NBD Exch 6200F 48G PoE SFP+ 370W SVC
H81X1E	HPE Aruba Networking Foundational Care 1Y NBD Exch 6200F 48G PoE SFP+ 740W SVC
H74A9E	HPE Aruba Networking Foundational Care 1Y NBD Exch 6200F 48G SFP+ SVC
H71H4E	HPE Aruba Networking Foundational Care 1Y NBD Exch 6200F 48G SVC
HR1E2E	HPE Aruba Networking Foundational Care 1Y NBD Exch 6200F 48G Switch SVC
H90H5E	HPE Aruba Networking Foundational Care 1Y NBD Exch 6200M 24G PoE SVC
H89U4E	HPE Aruba Networking Foundational Care 1Y NBD Exch 6200M 24G SVC
H91Y8E	HPE Aruba Networking Foundational Care 1Y NBD Exch 6200M 36G PoE SVC
H91K7E	HPE Aruba Networking Foundational Care 1Y NBD Exch 6200M 48G PoE SVC
H90W6E	HPE Aruba Networking Foundational Care 1Y NBD Exch 6200M 48G SVC
HR0V8E	HPE Aruba Networking Foundational Care 1Y NBD Exch HW Only 6200F 24G POE Switch SVC
HR0G7E	HPE Aruba Networking Foundational Care 1Y NBD Exch HW Only 6200F 24G Switch SVC
HL2K9E	HPE Aruba Networking Foundational Care 1Y NBD Exch HW Only 6200F 48G 740 POE Switch SVC
HL2B4E	HPE Aruba Networking Foundational Care 1Y NBD Exch HW Only 6200F 48G POE Switch SVC
HR1E3E	HPE Aruba Networking Foundational Care 1Y NBD Exch HW Only 6200F 48G Switch SVC
H92N0E	HPE Aruba Networking Foundational Care 1Y NBD Exch Hardware Only 6200F 12G SVC
H73M9E	HPE Aruba Networking Foundational Care 1Y NBD Exch Hardware Only 6200F 24G PoE SFP+ SVC
H70U4E	HPE Aruba Networking Foundational Care 1Y NBD Exch Hardware Only 6200F 24G PoE SVC
H72Y8E	HPE Aruba Networking Foundational Care 1Y NBD Exch Hardware Only 6200F 24G SFP+ SVC
H70F2E	HPE Aruba Networking Foundational Care 1Y NBD Exch Hardware Only 6200F 24G SVC
H71W6E	HPE Aruba Networking Foundational Care 1Y NBD Exch Hardware Only 6200F 48G PoE 370W SVC
H72K7E	HPE Aruba Networking Foundational Care 1Y NBD Exch Hardware Only 6200F 48G PoE 740W SVC
H74Q1E	HPE Aruba Networking Foundational Care 1Y NBD Exch Hardware Only 6200F 48G PoE SFP+ 370W SVC

H81X2E	HPE Aruba Networking Foundational Care 1Y NBD Exch Hardware Only 6200F 48G PoE SFP+ 740W SVC
H74B0E	HPE Aruba Networking Foundational Care 1Y NBD Exch Hardware Only 6200F 48G SFP+ SVC
H71H5E	HPE Aruba Networking Foundational Care 1Y NBD Exch Hardware Only 6200F 48G SVC
H90H6E	HPE Aruba Networking Foundational Care 1Y NBD Exch Hardware Only 6200M 24G PoE SVC
H89U5E	HPE Aruba Networking Foundational Care 1Y NBD Exch Hardware Only 6200M 24G SVC
H91Y9E	HPE Aruba Networking Foundational Care 1Y NBD Exch Hardware Only 6200M 36G PoE SVC
H91K8E	HPE Aruba Networking Foundational Care 1Y NBD Exch Hardware Only 6200M 48G PoE SVC
H90W7E	HPE Aruba Networking Foundational Care 1Y NBD Exch Hardware Only 6200M 48G SVC
H92U1E	HPE Aruba Networking Foundational Care 1Y NBD Exch Vol T1 6200F 12G SVC
HL1V1E	HPE Aruba Networking Foundational Care 1Y NBD Exch Vol T1 6200F 24G POE Switch SVC
H73U0E	HPE Aruba Networking Foundational Care 1Y NBD Exch Vol T1 6200F 24G PoE SFP+ SVC
H71A5E	HPE Aruba Networking Foundational Care 1Y NBD Exch Vol T1 6200F 24G PoE SVC
H73E9E	HPE Aruba Networking Foundational Care 1Y NBD Exch Vol T1 6200F 24G SFP+ SVC
H70M3E	HPE Aruba Networking Foundational Care 1Y NBD Exch Vol T1 6200F 24G SVC
HR0N8E	HPE Aruba Networking Foundational Care 1Y NBD Exch Vol T1 6200F 24G Switch SVC
HL2S0E	HPE Aruba Networking Foundational Care 1Y NBD Exch Vol T1 6200F 48G 740 POE Switch SVC
HR1Q3E	HPE Aruba Networking Foundational Care 1Y NBD Exch Vol T1 6200F 48G POE Switch SVC
H72C7E	HPE Aruba Networking Foundational Care 1Y NBD Exch Vol T1 6200F 48G PoE 370W SVC
H72R8E	HPE Aruba Networking Foundational Care 1Y NBD Exch Vol T1 6200F 48G PoE 740W SVC
H74W2E	HPE Aruba Networking Foundational Care 1Y NBD Exch Vol T1 6200F 48G PoE SFP+ 370W SVC
H82D3E	HPE Aruba Networking Foundational Care 1Y NBD Exch Vol T1 6200F 48G PoE SFP+ 740W SVC
H74H1E	HPE Aruba Networking Foundational Care 1Y NBD Exch Vol T1 6200F 48G SFP+ SVC
H71P6E	HPE Aruba Networking Foundational Care 1Y NBD Exch Vol T1 6200F 48G SVC
HL1Z0E	HPE Aruba Networking Foundational Care 1Y NBD Exch Vol T1 6200F 48G Switch SVC
H90P7E	HPE Aruba Networking Foundational Care 1Y NBD Exch Vol T1 6200M 24G PoE SVC
H90A6E	HPE Aruba Networking Foundational Care 1Y NBD Exch Vol T1 6200M 24G SVC
H92F0E	HPE Aruba Networking Foundational Care 1Y NBD Exch Vol T1 6200M 36G PoE SVC
H91R9E	HPE Aruba Networking Foundational Care 1Y NBD Exch Vol T1 6200M 48G PoE SVC
H91C8E	HPE Aruba Networking Foundational Care 1Y NBD Exch Vol T1 6200M 48G SVC
H92U2E	HPE Aruba Networking Foundational Care 1Y NBD Exch Vol T2 6200F 12G SVC
HL1V2E	HPE Aruba Networking Foundational Care 1Y NBD Exch Vol T2 6200F 24G POE Switch SVC
H73U1E	HPE Aruba Networking Foundational Care 1Y NBD Exch Vol T2 6200F 24G PoE SFP+ SVC
H71A6E	HPE Aruba Networking Foundational Care 1Y NBD Exch Vol T2 6200F 24G PoE SVC
H73F0E	HPE Aruba Networking Foundational Care 1Y NBD Exch Vol T2 6200F 24G SFP+ SVC
H70M4E	HPE Aruba Networking Foundational Care 1Y NBD Exch Vol T2 6200F 24G SVC

HR0N9E	HPE Aruba Networking Foundational Care 1Y NBD Exch Vol T2 6200F 24G Switch SVC
HL2S1E	HPE Aruba Networking Foundational Care 1Y NBD Exch Vol T2 6200F 48G 740 POE Switch SVC
HR1Q4E	HPE Aruba Networking Foundational Care 1Y NBD Exch Vol T2 6200F 48G POE Switch SVC
H72C8E	HPE Aruba Networking Foundational Care 1Y NBD Exch Vol T2 6200F 48G PoE 370W SVC
H72R9E	HPE Aruba Networking Foundational Care 1Y NBD Exch Vol T2 6200F 48G PoE 740W SVC
H74W3E	HPE Aruba Networking Foundational Care 1Y NBD Exch Vol T2 6200F 48G PoE SFP+ 370W SVC
H82D4E	HPE Aruba Networking Foundational Care 1Y NBD Exch Vol T2 6200F 48G PoE SFP+ 740W SVC
H74H2E	HPE Aruba Networking Foundational Care 1Y NBD Exch Vol T2 6200F 48G SFP+ SVC
H71P7E	HPE Aruba Networking Foundational Care 1Y NBD Exch Vol T2 6200F 48G SVC
HL1Z1E	HPE Aruba Networking Foundational Care 1Y NBD Exch Vol T2 6200F 48G Switch SVC
H90P8E	HPE Aruba Networking Foundational Care 1Y NBD Exch Vol T2 6200M 24G PoE SVC
H90A7E	HPE Aruba Networking Foundational Care 1Y NBD Exch Vol T2 6200M 24G SVC
H92F1E	HPE Aruba Networking Foundational Care 1Y NBD Exch Vol T2 6200M 36G PoE SVC
H91S0E	HPE Aruba Networking Foundational Care 1Y NBD Exch Vol T2 6200M 48G PoE SVC
H91C9E	HPE Aruba Networking Foundational Care 1Y NBD Exch Vol T2 6200M 48G SVC
HR0W0E	HPE Aruba Networking Foundational Care 1Y NBD Onsite 6200F 24G POE Switch SVC
HR0G9E	HPE Aruba Networking Foundational Care 1Y NBD Onsite 6200F 24G Switch SVC
HL2L1E	HPE Aruba Networking Foundational Care 1Y NBD Onsite 6200F 48G 740 POE Switch SVC
HL2B6E	HPE Aruba Networking Foundational Care 1Y NBD Onsite 6200F 48G POE Switch SVC
HR1E5E	HPE Aruba Networking Foundational Care 1Y NBD Onsite 6200F 48G Switch SVC
HR0W1E	HPE Aruba Networking Foundational Care 1Y NBD Onsite CDMR 6200F 24G POE Switch SVC
HR0H0E	HPE Aruba Networking Foundational Care 1Y NBD Onsite CDMR 6200F 24G Switch SVC
HL2L2E	HPE Aruba Networking Foundational Care 1Y NBD Onsite CDMR 6200F 48G 740 POE Switch SVC
HL2B7E	HPE Aruba Networking Foundational Care 1Y NBD Onsite CDMR 6200F 48G POE Switch SVC
HR1E6E	HPE Aruba Networking Foundational Care 1Y NBD Onsite CDMR 6200F 48G Switch SVC
H92P2E	HPE Aruba Networking Foundational Care 3Y 4HR Exch 6200F 12G SVC
HR0X0E	HPE Aruba Networking Foundational Care 3Y 4HR Exch 6200F 24G POE Switch SVC
HR0H9E	HPE Aruba Networking Foundational Care 3Y 4HR Exch 6200F 24G Switch SVC
HL2M1E	HPE Aruba Networking Foundational Care 3Y 4HR Exch 6200F 48G 740 POE Switch SVC
HL2C6E	HPE Aruba Networking Foundational Care 3Y 4HR Exch 6200F 48G POE Switch SVC
HR1F5E	HPE Aruba Networking Foundational Care 3Y 4HR Exch 6200F 48G Switch SVC
H90J8E	HPE Aruba Networking Foundational Care 3Y 4HR Exch 6200M 24G PoE SVC
H89V7E	HPE Aruba Networking Foundational Care 3Y 4HR Exch 6200M 24G SVC
H92A1E	HPE Aruba Networking Foundational Care 3Y 4HR Exch 6200M 36G PoE SVC
H91M0E	HPE Aruba Networking Foundational Care 3Y 4HR Exch 6200M 48G PoE SVC
H90X9E	HPE Aruba Networking Foundational Care 3Y 4HR Exch 6200M 48G SVC

H92V9E	HPE Aruba Networking Foundational Care 3Y 4HR Exch Vol T1 6200F 12G SVC
HR0Z1E	HPE Aruba Networking Foundational Care 3Y 4HR Exch Vol T1 6200F 24G POE Switch SVC
HR0Q6E	HPE Aruba Networking Foundational Care 3Y 4HR Exch Vol T1 6200F 24G Switch SVC
HL2T8E	HPE Aruba Networking Foundational Care 3Y 4HR Exch Vol T1 6200F 48G 740 POE Switch SVC
HR1S1E	HPE Aruba Networking Foundational Care 3Y 4HR Exch Vol T1 6200F 48G POE Switch SVC
HR1H6E	HPE Aruba Networking Foundational Care 3Y 4HR Exch Vol T1 6200F 48G Switch SVC
H90R5E	HPE Aruba Networking Foundational Care 3Y 4HR Exch Vol T1 6200M 24G PoE SVC
H90C4E	HPE Aruba Networking Foundational Care 3Y 4HR Exch Vol T1 6200M 24G SVC
H92G8E	HPE Aruba Networking Foundational Care 3Y 4HR Exch Vol T1 6200M 36G PoE SVC
H91T7E	HPE Aruba Networking Foundational Care 3Y 4HR Exch Vol T1 6200M 48G PoE SVC
H91E6E	HPE Aruba Networking Foundational Care 3Y 4HR Exch Vol T1 6200M 48G SVC
H92W0E	HPE Aruba Networking Foundational Care 3Y 4HR Exch Vol T2 6200F 12G SVC
HR0Z2E	HPE Aruba Networking Foundational Care 3Y 4HR Exch Vol T2 6200F 24G POE Switch SVC
HR0Q7E	HPE Aruba Networking Foundational Care 3Y 4HR Exch Vol T2 6200F 24G Switch SVC
HL2T9E	HPE Aruba Networking Foundational Care 3Y 4HR Exch Vol T2 6200F 48G 740 POE Switch SVC
HR1S2E	HPE Aruba Networking Foundational Care 3Y 4HR Exch Vol T2 6200F 48G POE Switch SVC
HR1H7E	HPE Aruba Networking Foundational Care 3Y 4HR Exch Vol T2 6200F 48G Switch SVC
H90R6E	HPE Aruba Networking Foundational Care 3Y 4HR Exch Vol T2 6200M 24G PoE SVC
H90C5E	HPE Aruba Networking Foundational Care 3Y 4HR Exch Vol T2 6200M 24G SVC
H92G9E	HPE Aruba Networking Foundational Care 3Y 4HR Exch Vol T2 6200M 36G PoE SVC
H91T8E	HPE Aruba Networking Foundational Care 3Y 4HR Exch Vol T2 6200M 48G PoE SVC
H91E7E	HPE Aruba Networking Foundational Care 3Y 4HR Exch Vol T2 6200M 48G SVC
H92P8E	HPE Aruba Networking Foundational Care 3Y 4HR Onsite 6200F 12G SVC
HR0X6E	HPE Aruba Networking Foundational Care 3Y 4HR Onsite 6200F 24G POE Switch SVC
HR0J5E	HPE Aruba Networking Foundational Care 3Y 4HR Onsite 6200F 24G Switch SVC
HL2M7E	HPE Aruba Networking Foundational Care 3Y 4HR Onsite 6200F 48G 740 POE Switch SVC
HL2D2E	HPE Aruba Networking Foundational Care 3Y 4HR Onsite 6200F 48G POE Switch SVC
HR1G1E	HPE Aruba Networking Foundational Care 3Y 4HR Onsite 6200F 48G Switch SVC
H90K4E	HPE Aruba Networking Foundational Care 3Y 4HR Onsite 6200M 24G PoE SVC
H89W3E	HPE Aruba Networking Foundational Care 3Y 4HR Onsite 6200M 24G SVC
H92A7E	HPE Aruba Networking Foundational Care 3Y 4HR Onsite 6200M 36G PoE SVC
H91M6E	HPE Aruba Networking Foundational Care 3Y 4HR Onsite 6200M 48G PoE SVC
H90Y5E	HPE Aruba Networking Foundational Care 3Y 4HR Onsite 6200M 48G SVC
HR0X7E	HPE Aruba Networking Foundational Care 3Y 4HR Onsite CDMR 6200F 24G POE Switch SVC
HR0J6E	HPE Aruba Networking Foundational Care 3Y 4HR Onsite CDMR 6200F 24G Switch SVC
HL2M8E	HPE Aruba Networking Foundational Care 3Y 4HR Onsite CDMR 6200F 48G 740 POE Switch SVC

HL2D3E	HPE Aruba Networking Foundational Care 3Y 4HR Onsite CDMR 6200F 48G POE Switch SVC
HR1G2E	HPE Aruba Networking Foundational Care 3Y 4HR Onsite CDMR 6200F 48G Switch SVC
HR0X5E	HPE Aruba Networking Foundational Care 3Y 4HR Onsite HW Only 6200F 24G POE Switch SVC
HR0J4E	HPE Aruba Networking Foundational Care 3Y 4HR Onsite HW Only 6200F 24G Switch SVC
HL2M6E	HPE Aruba Networking Foundational Care 3Y 4HR Onsite HW Only 6200F 48G 740 POE Switch SVC
HL2D1E	HPE Aruba Networking Foundational Care 3Y 4HR Onsite HW Only 6200F 48G POE Switch SVC
HR1G0E	HPE Aruba Networking Foundational Care 3Y 4HR Onsite HW Only 6200F 48G Switch SVC
H92P7E	HPE Aruba Networking Foundational Care 3Y 4HR Onsite Hardware Only 6200F 12G SVC
H90K3E	HPE Aruba Networking Foundational Care 3Y 4HR Onsite Hardware Only 6200M 24G PoE SVC
H89W2E	HPE Aruba Networking Foundational Care 3Y 4HR Onsite Hardware Only 6200M 24G SVC
H92A6E	HPE Aruba Networking Foundational Care 3Y 4HR Onsite Hardware Only 6200M 36G PoE SVC
H91M5E	HPE Aruba Networking Foundational Care 3Y 4HR Onsite Hardware Only 6200M 48G PoE SVC
H90Y4E	HPE Aruba Networking Foundational Care 3Y 4HR Onsite Hardware Only 6200M 48G SVC
H92P9E	HPE Aruba Networking Foundational Care 3Y 24x7 CDMR 6200F 12G SVC
H90K5E	HPE Aruba Networking Foundational Care 3Y 24x7 CDMR 6200M 24G PoE SVC
H89W4E	HPE Aruba Networking Foundational Care 3Y 24x7 CDMR 6200M 24G SVC
H92A8E	HPE Aruba Networking Foundational Care 3Y 24x7 CDMR 6200M 36G PoE SVC
H91M7E	HPE Aruba Networking Foundational Care 3Y 24x7 CDMR 6200M 48G PoE SVC
H90Y6E	HPE Aruba Networking Foundational Care 3Y 24x7 CDMR 6200M 48G SVC
H73Q0E	HPE Aruba Networking Foundational Care 3Y CTR 6200F 24G PoE SFP+ SVC
H70W5E	HPE Aruba Networking Foundational Care 3Y CTR 6200F 24G PoE SVC
H73A9E	HPE Aruba Networking Foundational Care 3Y CTR 6200F 24G SFP+ SVC
H70H3E	HPE Aruba Networking Foundational Care 3Y CTR 6200F 24G SVC
H71Y7E	HPE Aruba Networking Foundational Care 3Y CTR 6200F 48G PoE 370W SVC
H72M8E	HPE Aruba Networking Foundational Care 3Y CTR 6200F 48G PoE 740W SVC
H74S2E	HPE Aruba Networking Foundational Care 3Y CTR 6200F 48G PoE SFP+ 370W SVC
H74D1E	HPE Aruba Networking Foundational Care 3Y CTR 6200F 48G SFP+ SVC
H71K6E	HPE Aruba Networking Foundational Care 3Y CTR 6200F 48G SVC
H73Q1E	HPE Aruba Networking Foundational Care 3Y CTR CDMR 6200F 24G PoE SFP+ SVC
H70W6E	HPE Aruba Networking Foundational Care 3Y CTR CDMR 6200F 24G PoE SVC
H73B0E	HPE Aruba Networking Foundational Care 3Y CTR CDMR 6200F 24G SFP+ SVC
H70H4E	HPE Aruba Networking Foundational Care 3Y CTR CDMR 6200F 24G SVC
H71Y8E	HPE Aruba Networking Foundational Care 3Y CTR CDMR 6200F 48G PoE 370W SVC
H72M9E	HPE Aruba Networking Foundational Care 3Y CTR CDMR 6200F 48G PoE 740W SVC
H74S3E	HPE Aruba Networking Foundational Care 3Y CTR CDMR 6200F 48G PoE SFP+ 370W SVC
H74D2E	HPE Aruba Networking Foundational Care 3Y CTR CDMR 6200F 48G SFP+ SVC

H71K7E	HPE Aruba Networking Foundational Care 3Y CTR CDMR 6200F 48G SVC
H92P3E	HPE Aruba Networking Foundational Care 3Y NBD 6200F 12G SVC
H90J9E	HPE Aruba Networking Foundational Care 3Y NBD 6200M 24G PoE SVC
H89V8E	HPE Aruba Networking Foundational Care 3Y NBD 6200M 24G SVC
H92A2E	HPE Aruba Networking Foundational Care 3Y NBD 6200M 36G PoE SVC
H91M1E	HPE Aruba Networking Foundational Care 3Y NBD 6200M 48G PoE SVC
H90Y0E	HPE Aruba Networking Foundational Care 3Y NBD 6200M 48G SVC
H92P4E	HPE Aruba Networking Foundational Care 3Y NBD CDMR 6200F 12G SVC
H90K0E	HPE Aruba Networking Foundational Care 3Y NBD CDMR 6200M 24G PoE SVC
H89V9E	HPE Aruba Networking Foundational Care 3Y NBD CDMR 6200M 24G SVC
H92A3E	HPE Aruba Networking Foundational Care 3Y NBD CDMR 6200M 36G PoE SVC
H91M2E	HPE Aruba Networking Foundational Care 3Y NBD CDMR 6200M 48G PoE SVC
H90Y1E	HPE Aruba Networking Foundational Care 3Y NBD CDMR 6200M 48G SVC
H92P1E	HPE Aruba Networking Foundational Care 3Y NBD Exch 6200F 12G SVC
HR0W9E	HPE Aruba Networking Foundational Care 3Y NBD Exch 6200F 24G POE Switch SVC
H73P0E	HPE Aruba Networking Foundational Care 3Y NBD Exch 6200F 24G PoE SFP+ SVC
H70V5E	HPE Aruba Networking Foundational Care 3Y NBD Exch 6200F 24G PoE SVC
H72Z9E	HPE Aruba Networking Foundational Care 3Y NBD Exch 6200F 24G SFP+ SVC
H70G3E	HPE Aruba Networking Foundational Care 3Y NBD Exch 6200F 24G SVC
HR0H8E	HPE Aruba Networking Foundational Care 3Y NBD Exch 6200F 24G Switch SVC
HL2M0E	HPE Aruba Networking Foundational Care 3Y NBD Exch 6200F 48G 740 POE Switch SVC
HL2C5E	HPE Aruba Networking Foundational Care 3Y NBD Exch 6200F 48G POE Switch SVC
H71X7E	HPE Aruba Networking Foundational Care 3Y NBD Exch 6200F 48G PoE 370W SVC
H72L8E	HPE Aruba Networking Foundational Care 3Y NBD Exch 6200F 48G PoE 740W SVC
H74R2E	HPE Aruba Networking Foundational Care 3Y NBD Exch 6200F 48G PoE SFP+ 370W SVC
H81Y3E	HPE Aruba Networking Foundational Care 3Y NBD Exch 6200F 48G PoE SFP+ 740W SVC
H74C1E	HPE Aruba Networking Foundational Care 3Y NBD Exch 6200F 48G SFP+ SVC
H71J6E	HPE Aruba Networking Foundational Care 3Y NBD Exch 6200F 48G SVC
HR1F4E	HPE Aruba Networking Foundational Care 3Y NBD Exch 6200F 48G Switch SVC
H90J7E	HPE Aruba Networking Foundational Care 3Y NBD Exch 6200M 24G PoE SVC
H89V6E	HPE Aruba Networking Foundational Care 3Y NBD Exch 6200M 24G SVC
H92A0E	HPE Aruba Networking Foundational Care 3Y NBD Exch 6200M 36G PoE SVC
H91L9E	HPE Aruba Networking Foundational Care 3Y NBD Exch 6200M 48G PoE SVC
H90X8E	HPE Aruba Networking Foundational Care 3Y NBD Exch 6200M 48G SVC
HR0W8E	HPE Aruba Networking Foundational Care 3Y NBD Exch HW Only 6200F 24G POE Switch SVC
HR0H7E	HPE Aruba Networking Foundational Care 3Y NBD Exch HW Only 6200F 24G Switch SVC

HL2L9E	HPE Aruba Networking Foundational Care 3Y NBD Exch HW Only 6200F 48G 740 POE Switch SVC
HL2C4E	HPE Aruba Networking Foundational Care 3Y NBD Exch HW Only 6200F 48G POE Switch SVC
HR1F3E	HPE Aruba Networking Foundational Care 3Y NBD Exch HW Only 6200F 48G Switch SVC
H92P0E	HPE Aruba Networking Foundational Care 3Y NBD Exch Hardware Only 6200F 12G SVC
H73N9E	HPE Aruba Networking Foundational Care 3Y NBD Exch Hardware Only 6200F 24G PoE SFP+ SVC
H70V4E	HPE Aruba Networking Foundational Care 3Y NBD Exch Hardware Only 6200F 24G PoE SVC
H72Z8E	HPE Aruba Networking Foundational Care 3Y NBD Exch Hardware Only 6200F 24G SFP+ SVC
H70G2E	HPE Aruba Networking Foundational Care 3Y NBD Exch Hardware Only 6200F 24G SVC
H71X6E	HPE Aruba Networking Foundational Care 3Y NBD Exch Hardware Only 6200F 48G PoE 370W SVC
H72L7E	HPE Aruba Networking Foundational Care 3Y NBD Exch Hardware Only 6200F 48G PoE 740W SVC
H74R1E	HPE Aruba Networking Foundational Care 3Y NBD Exch Hardware Only 6200F 48G PoE SFP+ 370W SVC
H81Y2E	HPE Aruba Networking Foundational Care 3Y NBD Exch Hardware Only 6200F 48G PoE SFP+ 740W SVC
H74C0E	HPE Aruba Networking Foundational Care 3Y NBD Exch Hardware Only 6200F 48G SFP+ SVC
H71J5E	HPE Aruba Networking Foundational Care 3Y NBD Exch Hardware Only 6200F 48G SVC
H90J6E	HPE Aruba Networking Foundational Care 3Y NBD Exch Hardware Only 6200M 24G PoE SVC
H89V5E	HPE Aruba Networking Foundational Care 3Y NBD Exch Hardware Only 6200M 24G SVC
H91Z9E	HPE Aruba Networking Foundational Care 3Y NBD Exch Hardware Only 6200M 36G PoE SVC
H91L8E	HPE Aruba Networking Foundational Care 3Y NBD Exch Hardware Only 6200M 48G PoE SVC
H90X7E	HPE Aruba Networking Foundational Care 3Y NBD Exch Hardware Only 6200M 48G SVC
H92V5E	HPE Aruba Networking Foundational Care 3Y NBD Exch Vol T1 6200F 12G SVC
HR0Y7E	HPE Aruba Networking Foundational Care 3Y NBD Exch Vol T1 6200F 24G POE Switch SVC
H73V4E	HPE Aruba Networking Foundational Care 3Y NBD Exch Vol T1 6200F 24G PoE SFP+ SVC
H71B9E	HPE Aruba Networking Foundational Care 3Y NBD Exch Vol T1 6200F 24G PoE SVC
H73G3E	HPE Aruba Networking Foundational Care 3Y NBD Exch Vol T1 6200F 24G SFP+ SVC
H70N8E	HPE Aruba Networking Foundational Care 3Y NBD Exch Vol T1 6200F 24G SVC
HR0Q2E	HPE Aruba Networking Foundational Care 3Y NBD Exch Vol T1 6200F 24G Switch SVC
HL2T4E	HPE Aruba Networking Foundational Care 3Y NBD Exch Vol T1 6200F 48G 740 POE Switch SVC
HR1R7E	HPE Aruba Networking Foundational Care 3Y NBD Exch Vol T1 6200F 48G POE Switch SVC
H72E1E	HPE Aruba Networking Foundational Care 3Y NBD Exch Vol T1 6200F 48G PoE 370W SVC
H72T2E	HPE Aruba Networking Foundational Care 3Y NBD Exch Vol T1 6200F 48G PoE 740W SVC
H74X6E	HPE Aruba Networking Foundational Care 3Y NBD Exch Vol T1 6200F 48G PoE SFP+ 370W SVC
H82E7E	HPE Aruba Networking Foundational Care 3Y NBD Exch Vol T1 6200F 48G PoE SFP+ 740W SVC
H74J5E	HPE Aruba Networking Foundational Care 3Y NBD Exch Vol T1 6200F 48G SFP+ SVC
H71R0E	HPE Aruba Networking Foundational Care 3Y NBD Exch Vol T1 6200F 48G SVC
HL2A4E	HPE Aruba Networking Foundational Care 3Y NBD Exch Vol T1 6200F 48G Switch SVC

H90R1E	HPE Aruba Networking Foundational Care 3Y NBD Exch Vol T1 6200M 24G PoE SVC
H90C0E	HPE Aruba Networking Foundational Care 3Y NBD Exch Vol T1 6200M 24G SVC
H92G4E	HPE Aruba Networking Foundational Care 3Y NBD Exch Vol T1 6200M 36G PoE SVC
H91T3E	HPE Aruba Networking Foundational Care 3Y NBD Exch Vol T1 6200M 48G PoE SVC
H91E2E	HPE Aruba Networking Foundational Care 3Y NBD Exch Vol T1 6200M 48G SVC
H92V6E	HPE Aruba Networking Foundational Care 3Y NBD Exch Vol T2 6200F 12G SVC
HR0Y8E	HPE Aruba Networking Foundational Care 3Y NBD Exch Vol T2 6200F 24G POE Switch SVC
H73V5E	HPE Aruba Networking Foundational Care 3Y NBD Exch Vol T2 6200F 24G PoE SFP+ SVC
H71C0E	HPE Aruba Networking Foundational Care 3Y NBD Exch Vol T2 6200F 24G PoE SVC
H73G4E	HPE Aruba Networking Foundational Care 3Y NBD Exch Vol T2 6200F 24G SFP+ SVC
H70N9E	HPE Aruba Networking Foundational Care 3Y NBD Exch Vol T2 6200F 24G SVC
HR0Q3E	HPE Aruba Networking Foundational Care 3Y NBD Exch Vol T2 6200F 24G Switch SVC
HL2T5E	HPE Aruba Networking Foundational Care 3Y NBD Exch Vol T2 6200F 48G 740 POE Switch SVC
HR1R8E	HPE Aruba Networking Foundational Care 3Y NBD Exch Vol T2 6200F 48G POE Switch SVC
H72E2E	HPE Aruba Networking Foundational Care 3Y NBD Exch Vol T2 6200F 48G PoE 370W SVC
H72T3E	HPE Aruba Networking Foundational Care 3Y NBD Exch Vol T2 6200F 48G PoE 740W SVC
H74X7E	HPE Aruba Networking Foundational Care 3Y NBD Exch Vol T2 6200F 48G PoE SFP+ 370W SVC
H82E8E	HPE Aruba Networking Foundational Care 3Y NBD Exch Vol T2 6200F 48G PoE SFP+ 740W SVC
H74J6E	HPE Aruba Networking Foundational Care 3Y NBD Exch Vol T2 6200F 48G SFP+ SVC
H71R1E	HPE Aruba Networking Foundational Care 3Y NBD Exch Vol T2 6200F 48G SVC
HL2A5E	HPE Aruba Networking Foundational Care 3Y NBD Exch Vol T2 6200F 48G Switch SVC
H90R2E	HPE Aruba Networking Foundational Care 3Y NBD Exch Vol T2 6200M 24G PoE SVC
H90C1E	HPE Aruba Networking Foundational Care 3Y NBD Exch Vol T2 6200M 24G SVC
H92G5E	HPE Aruba Networking Foundational Care 3Y NBD Exch Vol T2 6200M 36G PoE SVC
H91T4E	HPE Aruba Networking Foundational Care 3Y NBD Exch Vol T2 6200M 48G PoE SVC
H91E3E	HPE Aruba Networking Foundational Care 3Y NBD Exch Vol T2 6200M 48G SVC
HR0X1E	HPE Aruba Networking Foundational Care 3Y NBD Onsite 6200F 24G POE Switch SVC
HR0J0E	HPE Aruba Networking Foundational Care 3Y NBD Onsite 6200F 24G Switch SVC
HL2M2E	HPE Aruba Networking Foundational Care 3Y NBD Onsite 6200F 48G 740 POE Switch SVC
HL2C7E	HPE Aruba Networking Foundational Care 3Y NBD Onsite 6200F 48G POE Switch SVC
HR1F6E	HPE Aruba Networking Foundational Care 3Y NBD Onsite 6200F 48G Switch SVC
HR0X2E	HPE Aruba Networking Foundational Care 3Y NBD Onsite CDMR 6200F 24G POE Switch SVC
HR0J1E	HPE Aruba Networking Foundational Care 3Y NBD Onsite CDMR 6200F 24G Switch SVC
HL2M3E	HPE Aruba Networking Foundational Care 3Y NBD Onsite CDMR 6200F 48G 740 POE Switch SVC
HL2C8E	HPE Aruba Networking Foundational Care 3Y NBD Onsite CDMR 6200F 48G POE Switch SVC
HR1F7E	HPE Aruba Networking Foundational Care 3Y NBD Onsite CDMR 6200F 48G Switch SVC

H92P6E	HPE Aruba Networking Foundational Care 3Y SBD Onsite 6200F 12G SVC
HR0X4E	HPE Aruba Networking Foundational Care 3Y SBD Onsite 6200F 24G POE Switch SVC
HR0J3E	HPE Aruba Networking Foundational Care 3Y SBD Onsite 6200F 24G Switch SVC
HL2M5E	HPE Aruba Networking Foundational Care 3Y SBD Onsite 6200F 48G 740 POE Switch SVC
HL2D0E	HPE Aruba Networking Foundational Care 3Y SBD Onsite 6200F 48G POE Switch SVC
HR1F9E	HPE Aruba Networking Foundational Care 3Y SBD Onsite 6200F 48G Switch SVC
H90K2E	HPE Aruba Networking Foundational Care 3Y SBD Onsite 6200M 24G PoE SVC
H89W1E	HPE Aruba Networking Foundational Care 3Y SBD Onsite 6200M 24G SVC
H92A5E	HPE Aruba Networking Foundational Care 3Y SBD Onsite 6200M 36G PoE SVC
H91M4E	HPE Aruba Networking Foundational Care 3Y SBD Onsite 6200M 48G PoE SVC
H90Y3E	HPE Aruba Networking Foundational Care 3Y SBD Onsite 6200M 48G SVC
H92R8E	HPE Aruba Networking Foundational Care 5Y 4HR Exch 6200F 12G SVC
HL1S8E	HPE Aruba Networking Foundational Care 5Y 4HR Exch 6200F 24G POE Switch SVC
HR0L5E	HPE Aruba Networking Foundational Care 5Y 4HR Exch 6200F 24G Switch SVC
HL2P7E	HPE Aruba Networking Foundational Care 5Y 4HR Exch 6200F 48G 740 POE Switch SVC
HL2F2E	HPE Aruba Networking Foundational Care 5Y 4HR Exch 6200F 48G POE Switch SVC
HL1W7E	HPE Aruba Networking Foundational Care 5Y 4HR Exch 6200F 48G Switch SVC
H90M4E	HPE Aruba Networking Foundational Care 5Y 4HR Exch 6200M 24G PoE SVC
H89Y3E	HPE Aruba Networking Foundational Care 5Y 4HR Exch 6200M 24G SVC
H92C7E	HPE Aruba Networking Foundational Care 5Y 4HR Exch 6200M 36G PoE SVC
H91P6E	HPE Aruba Networking Foundational Care 5Y 4HR Exch 6200M 48G PoE SVC
H91A5E	HPE Aruba Networking Foundational Care 5Y 4HR Exch 6200M 48G SVC
H92Y9E	HPE Aruba Networking Foundational Care 5Y 4HR Exch Vol T1 6200F 12G SVC
HR1C1E	HPE Aruba Networking Foundational Care 5Y 4HR Exch Vol T1 6200F 24G POE Switch SVC
HR0T6E	HPE Aruba Networking Foundational Care 5Y 4HR Exch Vol T1 6200F 24G Switch SVC
HR1U4E	HPE Aruba Networking Foundational Care 5Y 4HR Exch Vol T1 6200F 48G 740 POE Switch SVC
HL2H7E	HPE Aruba Networking Foundational Care 5Y 4HR Exch Vol T1 6200F 48G POE Switch SVC
HR1L6E	HPE Aruba Networking Foundational Care 5Y 4HR Exch Vol T1 6200F 48G Switch SVC
H90U5E	HPE Aruba Networking Foundational Care 5Y 4HR Exch Vol T1 6200M 24G PoE SVC
H90F4E	HPE Aruba Networking Foundational Care 5Y 4HR Exch Vol T1 6200M 24G SVC
H92K8E	HPE Aruba Networking Foundational Care 5Y 4HR Exch Vol T1 6200M 36G PoE SVC
H91W7E	HPE Aruba Networking Foundational Care 5Y 4HR Exch Vol T1 6200M 48G PoE SVC
H91H6E	HPE Aruba Networking Foundational Care 5Y 4HR Exch Vol T1 6200M 48G SVC
H92Z0E	HPE Aruba Networking Foundational Care 5Y 4HR Exch Vol T2 6200F 12G SVC
HR1C2E	HPE Aruba Networking Foundational Care 5Y 4HR Exch Vol T2 6200F 24G POE Switch SVC
HR0T7E	HPE Aruba Networking Foundational Care 5Y 4HR Exch Vol T2 6200F 24G Switch SVC

HR1U5E	HPE Aruba Networking Foundational Care 5Y 4HR Exch Vol T2 6200F 48G 740 POE Switch SVC
HL2H8E	HPE Aruba Networking Foundational Care 5Y 4HR Exch Vol T2 6200F 48G POE Switch SVC
HR1L7E	HPE Aruba Networking Foundational Care 5Y 4HR Exch Vol T2 6200F 48G Switch SVC
H90U6E	HPE Aruba Networking Foundational Care 5Y 4HR Exch Vol T2 6200M 24G PoE SVC
H90F5E	HPE Aruba Networking Foundational Care 5Y 4HR Exch Vol T2 6200M 24G SVC
H92K9E	HPE Aruba Networking Foundational Care 5Y 4HR Exch Vol T2 6200M 36G PoE SVC
H91W8E	HPE Aruba Networking Foundational Care 5Y 4HR Exch Vol T2 6200M 48G PoE SVC
H91H7E	HPE Aruba Networking Foundational Care 5Y 4HR Exch Vol T2 6200M 48G SVC
H92S4E	HPE Aruba Networking Foundational Care 5Y 4HR Onsite 6200F 12G SVC
HL1T4E	HPE Aruba Networking Foundational Care 5Y 4HR Onsite 6200F 24G POE Switch SVC
HR0M1E	HPE Aruba Networking Foundational Care 5Y 4HR Onsite 6200F 24G Switch SVC
HL2Q3E	HPE Aruba Networking Foundational Care 5Y 4HR Onsite 6200F 48G 740 POE Switch SVC
HR1N6E	HPE Aruba Networking Foundational Care 5Y 4HR Onsite 6200F 48G POE Switch SVC
HL1X3E	HPE Aruba Networking Foundational Care 5Y 4HR Onsite 6200F 48G Switch SVC
H90N0E	HPE Aruba Networking Foundational Care 5Y 4HR Onsite 6200M 24G PoE SVC
H89Y9E	HPE Aruba Networking Foundational Care 5Y 4HR Onsite 6200M 24G SVC
H92D3E	HPE Aruba Networking Foundational Care 5Y 4HR Onsite 6200M 36G PoE SVC
H91Q2E	HPE Aruba Networking Foundational Care 5Y 4HR Onsite 6200M 48G PoE SVC
H91B1E	HPE Aruba Networking Foundational Care 5Y 4HR Onsite 6200M 48G SVC
HL1T5E	HPE Aruba Networking Foundational Care 5Y 4HR Onsite CDMR 6200F 24G POE Switch SVC
HR0M2E	HPE Aruba Networking Foundational Care 5Y 4HR Onsite CDMR 6200F 24G Switch SVC
HL2Q4E	HPE Aruba Networking Foundational Care 5Y 4HR Onsite CDMR 6200F 48G 740 POE Switch SVC
HR1N7E	HPE Aruba Networking Foundational Care 5Y 4HR Onsite CDMR 6200F 48G POE Switch SVC
HL1X4E	HPE Aruba Networking Foundational Care 5Y 4HR Onsite CDMR 6200F 48G Switch SVC
HL1T3E	HPE Aruba Networking Foundational Care 5Y 4HR Onsite HW Only 6200F 24G POE Switch SVC
HR0M0E	HPE Aruba Networking Foundational Care 5Y 4HR Onsite HW Only 6200F 24G Switch SVC
HL2Q2E	HPE Aruba Networking Foundational Care 5Y 4HR Onsite HW Only 6200F 48G 740 POE Switch SVC
HR1N5E	HPE Aruba Networking Foundational Care 5Y 4HR Onsite HW Only 6200F 48G POE Switch SVC
HL1X2E	HPE Aruba Networking Foundational Care 5Y 4HR Onsite HW Only 6200F 48G Switch SVC
H92S3E	HPE Aruba Networking Foundational Care 5Y 4HR Onsite Hardware Only 6200F 12G SVC
H90M9E	HPE Aruba Networking Foundational Care 5Y 4HR Onsite Hardware Only 6200M 24G PoE SVC
H89Y8E	HPE Aruba Networking Foundational Care 5Y 4HR Onsite Hardware Only 6200M 24G SVC
H92D2E	HPE Aruba Networking Foundational Care 5Y 4HR Onsite Hardware Only 6200M 36G PoE SVC
H91Q1E	HPE Aruba Networking Foundational Care 5Y 4HR Onsite Hardware Only 6200M 48G PoE SVC
H91B0E	HPE Aruba Networking Foundational Care 5Y 4HR Onsite Hardware Only 6200M 48G SVC
H92S5E	HPE Aruba Networking Foundational Care 5Y 24x7 CDMR 6200F 12G SVC

H90N1E	HPE Aruba Networking Foundational Care 5Y 24x7 CDMR 6200M 24G PoE SVC
H89Z0E	HPE Aruba Networking Foundational Care 5Y 24x7 CDMR 6200M 24G SVC
H92D4E	HPE Aruba Networking Foundational Care 5Y 24x7 CDMR 6200M 36G PoE SVC
H91Q3E	HPE Aruba Networking Foundational Care 5Y 24x7 CDMR 6200M 48G PoE SVC
H91B2E	HPE Aruba Networking Foundational Care 5Y 24x7 CDMR 6200M 48G SVC
H73S6E	HPE Aruba Networking Foundational Care 5Y CTR 6200F 24G PoE SFP+ SVC
H70Z1E	HPE Aruba Networking Foundational Care 5Y CTR 6200F 24G PoE SVC
H73D5E	HPE Aruba Networking Foundational Care 5Y CTR 6200F 24G SFP+ SVC
H70K9E	HPE Aruba Networking Foundational Care 5Y CTR 6200F 24G SVC
H72B3E	HPE Aruba Networking Foundational Care 5Y CTR 6200F 48G PoE 370W SVC
H72Q4E	HPE Aruba Networking Foundational Care 5Y CTR 6200F 48G PoE 740W SVC
H74U8E	HPE Aruba Networking Foundational Care 5Y CTR 6200F 48G PoE SFP+ 370W SVC
H74F7E	HPE Aruba Networking Foundational Care 5Y CTR 6200F 48G SFP+ SVC
H71N2E	HPE Aruba Networking Foundational Care 5Y CTR 6200F 48G SVC
H73S7E	HPE Aruba Networking Foundational Care 5Y CTR CDMR 6200F 24G PoE SFP+ SVC
H70Z2E	HPE Aruba Networking Foundational Care 5Y CTR CDMR 6200F 24G PoE SVC
H73D6E	HPE Aruba Networking Foundational Care 5Y CTR CDMR 6200F 24G SFP+ SVC
H70L0E	HPE Aruba Networking Foundational Care 5Y CTR CDMR 6200F 24G SVC
H72B4E	HPE Aruba Networking Foundational Care 5Y CTR CDMR 6200F 48G PoE 370W SVC
H72Q5E	HPE Aruba Networking Foundational Care 5Y CTR CDMR 6200F 48G PoE 740W SVC
H74U9E	HPE Aruba Networking Foundational Care 5Y CTR CDMR 6200F 48G PoE SFP+ 370W SVC
H74F8E	HPE Aruba Networking Foundational Care 5Y CTR CDMR 6200F 48G SFP+ SVC
H71N3E	HPE Aruba Networking Foundational Care 5Y CTR CDMR 6200F 48G SVC
H92R9E	HPE Aruba Networking Foundational Care 5Y NBD 6200F 12G SVC
H90M5E	HPE Aruba Networking Foundational Care 5Y NBD 6200M 24G PoE SVC
H89Y4E	HPE Aruba Networking Foundational Care 5Y NBD 6200M 24G SVC
H92C8E	HPE Aruba Networking Foundational Care 5Y NBD 6200M 36G PoE SVC
H91P7E	HPE Aruba Networking Foundational Care 5Y NBD 6200M 48G PoE SVC
H91A6E	HPE Aruba Networking Foundational Care 5Y NBD 6200M 48G SVC
H92S0E	HPE Aruba Networking Foundational Care 5Y NBD CDMR 6200F 12G SVC
H90M6E	HPE Aruba Networking Foundational Care 5Y NBD CDMR 6200M 24G PoE SVC
H89Y5E	HPE Aruba Networking Foundational Care 5Y NBD CDMR 6200M 24G SVC
H92C9E	HPE Aruba Networking Foundational Care 5Y NBD CDMR 6200M 36G PoE SVC
H91P8E	HPE Aruba Networking Foundational Care 5Y NBD CDMR 6200M 48G PoE SVC
H91A7E	HPE Aruba Networking Foundational Care 5Y NBD CDMR 6200M 48G SVC
H92R7E	HPE Aruba Networking Foundational Care 5Y NBD Exch 6200F 12G SVC

HL1S7E	HPE Aruba Networking Foundational Care 5Y NBD Exch 6200F 24G POE Switch SVC
H73R6E	HPE Aruba Networking Foundational Care 5Y NBD Exch 6200F 24G PoE SFP+ SVC
H70Y1E	HPE Aruba Networking Foundational Care 5Y NBD Exch 6200F 24G PoE SVC
H73C5E	HPE Aruba Networking Foundational Care 5Y NBD Exch 6200F 24G SFP+ SVC
H70J9E	HPE Aruba Networking Foundational Care 5Y NBD Exch 6200F 24G SVC
HR0L4E	HPE Aruba Networking Foundational Care 5Y NBD Exch 6200F 24G Switch SVC
HL2P6E	HPE Aruba Networking Foundational Care 5Y NBD Exch 6200F 48G 740 POE Switch SVC
HL2F1E	HPE Aruba Networking Foundational Care 5Y NBD Exch 6200F 48G POE Switch SVC
H72A3E	HPE Aruba Networking Foundational Care 5Y NBD Exch 6200F 48G PoE 370W SVC
H72P4E	HPE Aruba Networking Foundational Care 5Y NBD Exch 6200F 48G PoE 740W SVC
H74T8E	HPE Aruba Networking Foundational Care 5Y NBD Exch 6200F 48G PoE SFP+ 370W SVC
H82A9E	HPE Aruba Networking Foundational Care 5Y NBD Exch 6200F 48G PoE SFP+ 740W SVC
H74E7E	HPE Aruba Networking Foundational Care 5Y NBD Exch 6200F 48G SFP+ SVC
H71M2E	HPE Aruba Networking Foundational Care 5Y NBD Exch 6200F 48G SVC
HL1W6E	HPE Aruba Networking Foundational Care 5Y NBD Exch 6200F 48G Switch SVC
H90M3E	HPE Aruba Networking Foundational Care 5Y NBD Exch 6200M 24G PoE SVC
H89Y2E	HPE Aruba Networking Foundational Care 5Y NBD Exch 6200M 24G SVC
H92C6E	HPE Aruba Networking Foundational Care 5Y NBD Exch 6200M 36G PoE SVC
H91P5E	HPE Aruba Networking Foundational Care 5Y NBD Exch 6200M 48G PoE SVC
H91A4E	HPE Aruba Networking Foundational Care 5Y NBD Exch 6200M 48G SVC
HL1S6E	HPE Aruba Networking Foundational Care 5Y NBD Exch HW Only 6200F 24G POE Switch SVC
HR0L3E	HPE Aruba Networking Foundational Care 5Y NBD Exch HW Only 6200F 24G Switch SVC
HL2P5E	HPE Aruba Networking Foundational Care 5Y NBD Exch HW Only 6200F 48G 740 POE Switch SVC
HL2F0E	HPE Aruba Networking Foundational Care 5Y NBD Exch HW Only 6200F 48G POE Switch SVC
HL1W5E	HPE Aruba Networking Foundational Care 5Y NBD Exch HW Only 6200F 48G Switch SVC
H92R6E	HPE Aruba Networking Foundational Care 5Y NBD Exch Hardware Only 6200F 12G SVC
H73R5E	HPE Aruba Networking Foundational Care 5Y NBD Exch Hardware Only 6200F 24G PoE SFP+ SVC
H70Y0E	HPE Aruba Networking Foundational Care 5Y NBD Exch Hardware Only 6200F 24G PoE SVC
H73C4E	HPE Aruba Networking Foundational Care 5Y NBD Exch Hardware Only 6200F 24G SFP+ SVC
H70J8E	HPE Aruba Networking Foundational Care 5Y NBD Exch Hardware Only 6200F 24G SVC
H72A2E	HPE Aruba Networking Foundational Care 5Y NBD Exch Hardware Only 6200F 48G PoE 370W SVC
H72P3E	HPE Aruba Networking Foundational Care 5Y NBD Exch Hardware Only 6200F 48G PoE 740W SVC
H74T7E	HPE Aruba Networking Foundational Care 5Y NBD Exch Hardware Only 6200F 48G PoE SFP+ 370W SVC
H82A8E	HPE Aruba Networking Foundational Care 5Y NBD Exch Hardware Only 6200F 48G PoE SFP+ 740W SVC
H74E6E	HPE Aruba Networking Foundational Care 5Y NBD Exch Hardware Only 6200F 48G SFP+ SVC

H71M1E	HPE Aruba Networking Foundational Care 5Y NBD Exch Hardware Only 6200F 48G SVC
H90M2E	HPE Aruba Networking Foundational Care 5Y NBD Exch Hardware Only 6200M 24G PoE SVC
H89Y1E	HPE Aruba Networking Foundational Care 5Y NBD Exch Hardware Only 6200M 24G SVC
H92C5E	HPE Aruba Networking Foundational Care 5Y NBD Exch Hardware Only 6200M 36G PoE SVC
H91P4E	HPE Aruba Networking Foundational Care 5Y NBD Exch Hardware Only 6200M 48G PoE SVC
H91A3E	HPE Aruba Networking Foundational Care 5Y NBD Exch Hardware Only 6200M 48G SVC
H92Y5E	HPE Aruba Networking Foundational Care 5Y NBD Exch Vol T1 6200F 12G SVC
HR1B7E	HPE Aruba Networking Foundational Care 5Y NBD Exch Vol T1 6200F 24G POE Switch SVC
H73Y4E	HPE Aruba Networking Foundational Care 5Y NBD Exch Vol T1 6200F 24G PoE SFP+ SVC
H71E9E	HPE Aruba Networking Foundational Care 5Y NBD Exch Vol T1 6200F 24G PoE SVC
H73K3E	HPE Aruba Networking Foundational Care 5Y NBD Exch Vol T1 6200F 24G SFP+ SVC
H70R8E	HPE Aruba Networking Foundational Care 5Y NBD Exch Vol T1 6200F 24G SVC
HR0T2E	HPE Aruba Networking Foundational Care 5Y NBD Exch Vol T1 6200F 24G Switch SVC
HR1U0E	HPE Aruba Networking Foundational Care 5Y NBD Exch Vol T1 6200F 48G 740 POE Switch SVC
HL2H3E	HPE Aruba Networking Foundational Care 5Y NBD Exch Vol T1 6200F 48G POE Switch SVC
H72H1E	HPE Aruba Networking Foundational Care 5Y NBD Exch Vol T1 6200F 48G PoE 370W SVC
H72W2E	HPE Aruba Networking Foundational Care 5Y NBD Exch Vol T1 6200F 48G PoE 740W SVC
H81U6E	HPE Aruba Networking Foundational Care 5Y NBD Exch Vol T1 6200F 48G PoE SFP+ 370W SVC
H82H7E	HPE Aruba Networking Foundational Care 5Y NBD Exch Vol T1 6200F 48G PoE SFP+ 740W SVC
H74M5E	HPE Aruba Networking Foundational Care 5Y NBD Exch Vol T1 6200F 48G SFP+ SVC
H71U0E	HPE Aruba Networking Foundational Care 5Y NBD Exch Vol T1 6200F 48G SVC
HR1L2E	HPE Aruba Networking Foundational Care 5Y NBD Exch Vol T1 6200F 48G Switch SVC
H90U1E	HPE Aruba Networking Foundational Care 5Y NBD Exch Vol T1 6200M 24G PoE SVC
H90F0E	HPE Aruba Networking Foundational Care 5Y NBD Exch Vol T1 6200M 24G SVC
H92K4E	HPE Aruba Networking Foundational Care 5Y NBD Exch Vol T1 6200M 36G PoE SVC
H91W3E	HPE Aruba Networking Foundational Care 5Y NBD Exch Vol T1 6200M 48G PoE SVC
H91H2E	HPE Aruba Networking Foundational Care 5Y NBD Exch Vol T1 6200M 48G SVC
H92Y6E	HPE Aruba Networking Foundational Care 5Y NBD Exch Vol T2 6200F 12G SVC
HR1B8E	HPE Aruba Networking Foundational Care 5Y NBD Exch Vol T2 6200F 24G POE Switch SVC
H73Y5E	HPE Aruba Networking Foundational Care 5Y NBD Exch Vol T2 6200F 24G PoE SFP+ SVC
H71F0E	HPE Aruba Networking Foundational Care 5Y NBD Exch Vol T2 6200F 24G PoE SVC
H73K4E	HPE Aruba Networking Foundational Care 5Y NBD Exch Vol T2 6200F 24G SFP+ SVC
H70R9E	HPE Aruba Networking Foundational Care 5Y NBD Exch Vol T2 6200F 24G SVC
HR0T3E	HPE Aruba Networking Foundational Care 5Y NBD Exch Vol T2 6200F 24G Switch SVC
HR1U1E	HPE Aruba Networking Foundational Care 5Y NBD Exch Vol T2 6200F 48G 740 POE Switch SVC
HL2H4E	HPE Aruba Networking Foundational Care 5Y NBD Exch Vol T2 6200F 48G POE Switch SVC

H72H2E	HPE Aruba Networking Foundational Care 5Y NBD Exch Vol T2 6200F 48G PoE 370W SVC
H72W3E	HPE Aruba Networking Foundational Care 5Y NBD Exch Vol T2 6200F 48G PoE 740W SVC
H81U7E	HPE Aruba Networking Foundational Care 5Y NBD Exch Vol T2 6200F 48G PoE SFP+ 370W SVC
H82H8E	HPE Aruba Networking Foundational Care 5Y NBD Exch Vol T2 6200F 48G PoE SFP+ 740W SVC
H74M6E	HPE Aruba Networking Foundational Care 5Y NBD Exch Vol T2 6200F 48G SFP+ SVC
H71U1E	HPE Aruba Networking Foundational Care 5Y NBD Exch Vol T2 6200F 48G SVC
HR1L3E	HPE Aruba Networking Foundational Care 5Y NBD Exch Vol T2 6200F 48G Switch SVC
H90U2E	HPE Aruba Networking Foundational Care 5Y NBD Exch Vol T2 6200M 24G PoE SVC
H90F1E	HPE Aruba Networking Foundational Care 5Y NBD Exch Vol T2 6200M 24G SVC
H92K5E	HPE Aruba Networking Foundational Care 5Y NBD Exch Vol T2 6200M 36G PoE SVC
H91W4E	HPE Aruba Networking Foundational Care 5Y NBD Exch Vol T2 6200M 48G PoE SVC
H91H3E	HPE Aruba Networking Foundational Care 5Y NBD Exch Vol T2 6200M 48G SVC
HL1S9E	HPE Aruba Networking Foundational Care 5Y NBD Onsite 6200F 24G POE Switch SVC
HR0L6E	HPE Aruba Networking Foundational Care 5Y NBD Onsite 6200F 24G Switch SVC
HL2P8E	HPE Aruba Networking Foundational Care 5Y NBD Onsite 6200F 48G 740 POE Switch SVC
HR1N1E	HPE Aruba Networking Foundational Care 5Y NBD Onsite 6200F 48G POE Switch SVC
HL1W8E	HPE Aruba Networking Foundational Care 5Y NBD Onsite 6200F 48G Switch SVC
HL1T0E	HPE Aruba Networking Foundational Care 5Y NBD Onsite CDMR 6200F 24G POE Switch SVC
HR0L7E	HPE Aruba Networking Foundational Care 5Y NBD Onsite CDMR 6200F 24G Switch SVC
HL2P9E	HPE Aruba Networking Foundational Care 5Y NBD Onsite CDMR 6200F 48G 740 POE Switch SVC
HR1N2E	HPE Aruba Networking Foundational Care 5Y NBD Onsite CDMR 6200F 48G POE Switch SVC
HL1W9E	HPE Aruba Networking Foundational Care 5Y NBD Onsite CDMR 6200F 48G Switch SVC
H92S2E	HPE Aruba Networking Foundational Care 5Y SBD Onsite 6200F 12G SVC
HL1T2E	HPE Aruba Networking Foundational Care 5Y SBD Onsite 6200F 24G POE Switch SVC
HR0L9E	HPE Aruba Networking Foundational Care 5Y SBD Onsite 6200F 24G Switch SVC
HL2Q1E	HPE Aruba Networking Foundational Care 5Y SBD Onsite 6200F 48G 740 POE Switch SVC
HR1N4E	HPE Aruba Networking Foundational Care 5Y SBD Onsite 6200F 48G POE Switch SVC
HL1X1E	HPE Aruba Networking Foundational Care 5Y SBD Onsite 6200F 48G Switch SVC
H90M8E	HPE Aruba Networking Foundational Care 5Y SBD Onsite 6200M 24G PoE SVC
H89Y7E	HPE Aruba Networking Foundational Care 5Y SBD Onsite 6200M 24G SVC
H92D1E	HPE Aruba Networking Foundational Care 5Y SBD Onsite 6200M 36G PoE SVC
H91Q0E	HPE Aruba Networking Foundational Care 5Y SBD Onsite 6200M 48G PoE SVC
H91A9E	HPE Aruba Networking Foundational Care 5Y SBD Onsite 6200M 48G SVC
HR0W5E	HPE Aruba Networking Software+Technical Support 1Y 6200F 24G POE Switch SVC
HR0H4E	HPE Aruba Networking Software+Technical Support 1Y 6200F 24G Switch SVC
HL2L6E	HPE Aruba Networking Software+Technical Support 1Y 6200F 48G 740 POE Switch SVC

HL2C1E	HPE Aruba Networking Software+Technical Support 1Y 6200F 48G POE Switch SVC
HR1F0E	HPE Aruba Networking Software+Technical Support 1Y 6200F 48G Switch SVC
HL1W0E	HPE Aruba Networking Software+Technical Support 1Y Vol T2 6200F 24G POE Switch SVC
HR0P7E	HPE Aruba Networking Software+Technical Support 1Y Vol T2 6200F 24G Switch SVC
HL2S9E	HPE Aruba Networking Software+Technical Support 1Y Vol T2 6200F 48G 740 POE Switch SVC
HR1R2E	HPE Aruba Networking Software+Technical Support 1Y Vol T2 6200F 48G POE Switch SVC
HL1Z9E	HPE Aruba Networking Software+Technical Support 1Y Vol T2 6200F 48G Switch SVC
HR0X8E	HPE Aruba Networking Software+Technical Support 3Y 6200F 24G POE Switch SVC
HR0J7E	HPE Aruba Networking Software+Technical Support 3Y 6200F 24G Switch SVC
HL2M9E	HPE Aruba Networking Software+Technical Support 3Y 6200F 48G 740 POE Switch SVC
HL2D4E	HPE Aruba Networking Software+Technical Support 3Y 6200F 48G POE Switch SVC
HR1G3E	HPE Aruba Networking Software+Technical Support 3Y 6200F 48G Switch SVC
HR0Z7E	HPE Aruba Networking Software+Technical Support 3Y Vol T2 6200F 24G POE Switch SVC
HR0R2E	HPE Aruba Networking Software+Technical Support 3Y Vol T2 6200F 24G Switch SVC
HL2U4E	HPE Aruba Networking Software+Technical Support 3Y Vol T2 6200F 48G 740 POE Switch SVC
HL2F3E	HPE Aruba Networking Software+Technical Support 3Y Vol T2 6200F 48G POE Switch SVC
HR1J2E	HPE Aruba Networking Software+Technical Support 3Y Vol T2 6200F 48G Switch SVC
HL1T6E	HPE Aruba Networking Software+Technical Support 5Y 6200F 24G POE Switch SVC
HR0M3E	HPE Aruba Networking Software+Technical Support 5Y 6200F 24G Switch SVC
HL2Q5E	HPE Aruba Networking Software+Technical Support 5Y 6200F 48G 740 POE Switch SVC
HR1N8E	HPE Aruba Networking Software+Technical Support 5Y 6200F 48G POE Switch SVC
HL1X5E	HPE Aruba Networking Software+Technical Support 5Y 6200F 48G Switch SVC
HR1C7E	HPE Aruba Networking Software+Technical Support 5Y Vol T2 6200F 24G POE Switch SVC
HR0U2E	HPE Aruba Networking Software+Technical Support 5Y Vol T2 6200F 24G Switch SVC
HR1V0E	HPE Aruba Networking Software+Technical Support 5Y Vol T2 6200F 48G 740 POE Switch SVC
HL2J3E	HPE Aruba Networking Software+Technical Support 5Y Vol T2 6200F 48G POE Switch SVC
HR1M2E	HPE Aruba Networking Software+Technical Support 5Y Vol T2 6200F 48G Switch SVC

## HPE Aruba Networking 服务

HPE Aruba Networking 服务可以简化并加速网络技术生命周期管理，让网络能够灵活扩展，同时进一步提高可预测性和成本效益。无论您是希望进行自有网络的运维并提高 IT 效率，还是想减轻一些负担，我们总能提供所需服务，助您达成所愿。

如需了解更多有关 HPE Services - Aruba Networking 的信息，请访问：[hpe.com/edge/services](https://hpe.com/edge/services)

### 支持服务

我们的支持产品组合除了提供基础性支持服务外，也提供主动式和预防性功能，有助于提高团队的生产力并充分发挥网络的价值。我们的支持客户获益良多，比如快速解决问题、简化运维、提高效率和减少网络问题。

### 专业服务

得益于深厚的知识资本和多种专用工具，我们的团队提供一系列标准和定制专业服务，助您快速发挥 HPE Aruba Networking 技术的价值。

#### 基于项目的服务包括：

- 规划、审计和评估
- 架构审查和设计
- 部署、迁移和知识传授

#### 年度订阅服务包括：

- 网络优化
- 智能运维
- 客户体验管理

### HPE GreenLake for Networking

我们的 NaaS 解决方案是 HPE GreenLake 服务系列的一部分，可简化网络运营、加速设备处理并提高 HPE Aruba 网络解决方案的价值。如果您的团队需要专家指导和基于自动化的操作，请通过 [HPE GreenLake for Networking](#) 探索我们的 NaaS 方法

[有关其他技术信息，可用的型号和选项，请参阅QuickSpecs](#)

访问 [HPE.com](https://www.hpe.com)

## [立即聊天](#)

版权所有 2026 慧与发展有限合伙企业。本文所含信息如有更改，恕不另行通知。Hewlett Packard Enterprise 产品与服务的全部保修条件在此类产品和服务附带的明确保修声明中均已列明。本文中的任何信息均不构成额外的保修条款。Hewlett Packard Enterprise 对本文档包含的技术性或编辑性错误或遗漏之处不承担任何责任。

部件和材料：慧与将提供慧与支持的必要更换部件和材料，以对服务覆盖的硬件进行维护。

对于达到制造商使用手册、产品规格概述或技术产品数据表中所列的最长支持使用寿命和/或最大使用量限制的部件和组件，将不作为这些服务的一部分来提供、维修或更换。

Arm 是 Arm Limited 的注册商标。Python 是 Python 软件基金会的注册商标。蓝牙商标归其所有者所有，HPE 经授权使用。

图像可能与实物有所不同。

[PSN1012684094CNZH](#), 六月, 2026.

HEWLETT PACKARD ENTERPRISE

[hpe.com](https://www.hpe.com)

