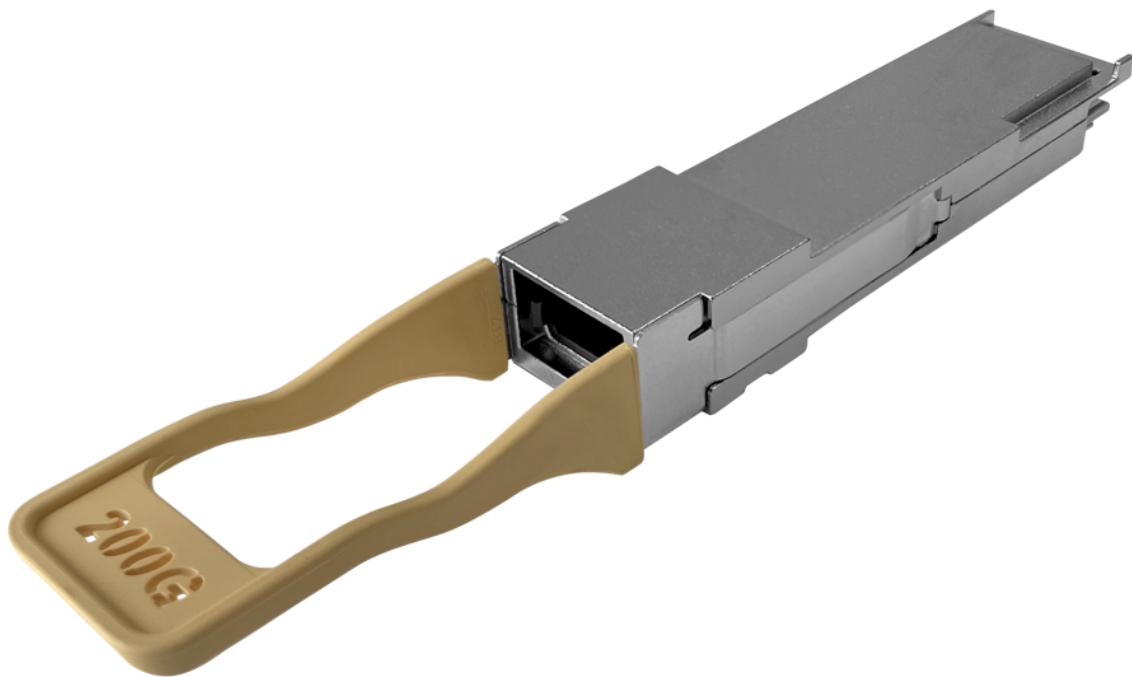


HPE Networking Transceiver Options

HPE Aruba Networking 200G SR4 QSFP56 MPO12 100m MMF Transceiver (S4B43A)



Overview

Technical specifications	HPE Aruba Networking 200G SR4 QSFP56 MPO12 100m MMF Transceiver
Product Number	S4B43A
Type	QSFP56
Maximum distance	100 m
Product dimensions	1.3 x 1.8 x 11.9 cm
Weight	63.5 gm

HPE Aruba Networking Services

HPE Aruba Networking services simplify and accelerate the network technology lifecycle, enabling your network to scale with better predictability and cost-effectiveness. Whether you operate your own network and need to improve your IT efficiencies, or you want to offload some of the burden, we have the services you need to reach your goals.

Learn more about what HPE Services - Aruba Networking has to offer at: hpe.com/edge/services

Support Services

Our support portfolio provides the essential support elements as well as proactive and preventive features to help you improve your team's productivity and get the most from your network. Our support customers benefit from faster issue resolution, simplified operations and efficiencies, and reduced network issues.

Professional Services

With deep intellectual capital and purpose-built tools, our team delivers a range of standard and custom professional services designed to accelerate your value from HPE Aruba Networking technology.

Project based services include:

- Planning, audit, and assessment
- Architecture review and design
- Deployment, migration, and knowledge transfer

Annual subscription services include:

- Network optimization
- Intelligent Operations
- Customer Experience Management

Our [Education Services](#) allow your team to come up to speed quickly.

HPE GreenLake for Networking

Our NaaS solution, is part of the HPE GreenLake services family, and simplifies network operations, accelerates equipment handling, and increases the value of your HPE Aruba Networking solution. If you need expert guidance and automation-based operations for your team, please explore our NaaS approach through HPE GreenLake for Networking.

[For additional technical information, available models and options, please reference the QuickSpecs](#)

Visit [HPE.com](https://www.hpe.com)

[Chat now](#)

© Copyright 2026 Hewlett Packard Enterprise Development LP. The information contained herein is subject to change without notice. The only warranties for Hewlett Packard Enterprise products and services are set forth in the express warranty statements accompanying such products and services. Nothing herein should be construed as constituting an additional warranty. Hewlett Packard Enterprise shall not be liable for technical or editorial errors or omissions contained herein.

Parts and Materials: HPE will provide HPE-supported replacement parts and materials required to maintain the covered hardware.

Parts and components that have reached their maximum supported lifetime and/or the maximum usage limitations as set forth in the manufacturer's operating manual, product quick-specs, or the technical product data sheet will not be provided, repaired, or replaced as part of these services.

Image may differ from the actual product.

[PSN1014866416DKEN](#), March, 2026.

HEWLETT PACKARD ENTERPRISE

[hpe.com](https://www.hpe.com)

