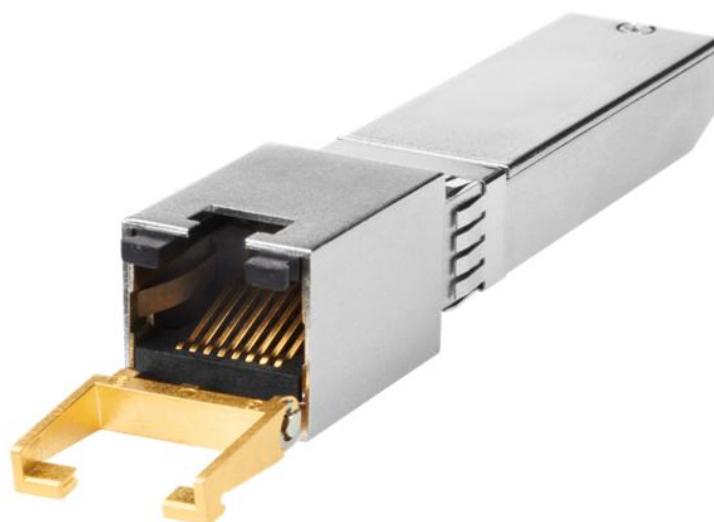


HPE 10GBase-T SFP+ Transceiver (813874-B21)



Overview

Can data center save costs by using low-cost RJ45 copper cables for 10GbE connection? The Transceptor SFP+ HPE 10GBase-T can convert a 10 Gb SFP+ port on an Hewlett Packard Enterprise switch to a 10GBase-T connection. It is specifically designed for high speed communication links that require 10 Gigabit Ethernet over Cat 6a/7 cable. This SFP+ transceiver offers 10 Gb/s communication over RJ45 copper cables.

Features

Features

Supports links up to 30 m using Cat 6a/7 cable.

Converts SFP+ to RJ45 connector
Low EMI emissions.
IEEE 802.3az compliant.
Low power consumption (2.5 W @ 30 m).

Technical specifications

HPE 10GBase-T SFP+ Transceiver

Product Number	813874-B21
Ports	1 10-GbE SFP+ port Duplex: full only
Connector type	RJ45
Transceiver form factor	10GBase-T
Product dimensions (imperial)	2.8(d) x 0.53(w) x 0.55(h) in. (7.11 x 1.35 x 1.40 cm)



[For additional technical information, available models and options, please reference the QuickSpecs](#)

HPE Services

No matter where you are in your transformation journey, you can count on HPE Services to deliver the expertise you need when, where and how you need it. From strategy and planning to deployment, ongoing operations and beyond, our experts can help you realize your digital ambitions.

Consulting services

Experts can help you map out your path to hybrid cloud and optimize your operations.

Managed services

HPE runs your IT operations, giving you unified control, so can focus on innovation.

Operational services

Optimize your entire IT environment and drive innovation. Manage day-to-day IT operational tasks while freeing up valuable time and resources.

- HPE Complete Care Service: a modular service designed to help optimize your entire IT environment and achieve agreed upon IT outcomes and business goals. All delivered by an assigned team of HPE experts.
- HPE Tech Care Service: the operational service experience for HPE products. The service provides access to product specific experts, an AI driven digital experience, and general technical guidance to help reduce risk and search for ways to do things better.

Lifecycle Services

Address your specific IT deployment project needs with tailored project management and deployment services.

HPE Education Services

Training and certification designed for IT and business professionals across all industries. Create learning paths to expand proficiency in a specific subject. Schedule training in a way that works best for your business with flexible continuous learning options.

The [Defective Media Retention \(DMR\)](#) service feature option applies only to Disk or eligible SSD/Flash Drives replaced by Hewlett Packard Enterprise due to malfunction. [Comprehensive Defective Material Retention \(CDMR\)](#) allows you to keep all data retentive components.

HPE GreenLake

[HPE GreenLake edge-to-cloud platform](#) is HPE's market-leading as-a-Service offering that brings the cloud experience to apps and data everywhere – data centers, multi-clouds, and edges – with one unified operating model, on premises, fully managed in a pay per use model.

If you are looking for more services, like **IT financing solutions**, please explore them [here](#).

Explore **HPE GreenLake**

Make the right purchase decision.
Contact our presales specialists.

[Chat online](#)



Chat now (sales)



Call now



Buy now



Share now



Get updates

**Hewlett Packard
Enterprise**

© Copyright 2023 Hewlett Packard Enterprise Development LP. The information contained herein is subject to change without notice. The only warranties for Hewlett Packard Enterprise products and services are set forth in the express warranty statements accompanying such products and services. Nothing herein should be construed as constituting an additional warranty. Hewlett Packard Enterprise shall not be liable for technical or editorial errors or omissions contained herein.

Parts and Materials: HPE will provide HPE-supported replacement parts and materials required to maintain the covered hardware.

Parts and components that have reached their maximum supported lifetime and/or the maximum usage limitations as set forth in the manufacturer's operating manual, product quick-specs, or the technical product data sheet will not be provided, repaired, or replaced as part of these services.

Image may differ from the actual product
[PSN8689430UKEN](#), December, 2023.