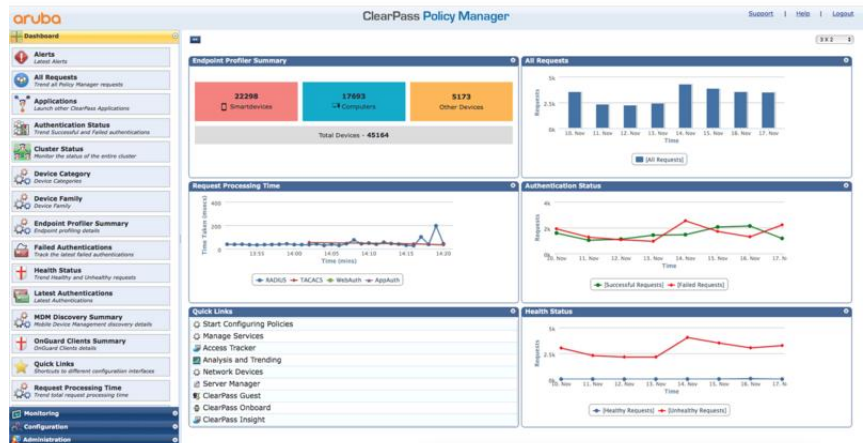


ARUBA CLEARPASS ONGUARD SOFTWARE

Aruba Software



OVERVIEW

Aruba ClearPass OnGuard Software agents perform advanced endpoint posture assessments on leading computer operating systems to ensure compliance is met before devices connect.

Running on the Aruba ClearPass Policy Manager platform, the advanced network access control (NAC) framework in ClearPass OnGuard offers exceptional safeguards against vulnerabilities. In addition to anti-virus, anti-spyware and personal firewall audits performed by traditional NAC products, OnGuard agents can perform additional posture and health

checks to ensure a greater level of endpoint compliance

FEATURES

IT-managed and BYOD Endpoint Compliance

Aruba ClearPass OnGuard Software persistent and dissolvable agents can be used together in environments where endpoints are owned by the organization, employees and visitors.

This ensures that all devices are assessed and granted proper privileges before accessing the network.

Automatic Remediation

Aruba ClearPass OnGuard Software sends users instructions on how to achieve compliance when auto-remediation is not used if unhealthy endpoints do not meet compliance requirements.

ClearPass persistent agents provide the same message and remediation capabilities for 802.1X and combined environments.

Complete Endpoint Compliance

Aruba ClearPass OnGuard Software offers the ability to centrally managed health-check settings and policies to simplify troubleshooting, endpoint control and compliance reporting.

Views of ClearPass OnGuard activity, including user and device data show information about each device that connects using OnGuard agents.

Technical specifications

Aruba ClearPass OnGuard Software

Support infrastructure vendors

ClearPass OnGuard supports the following antivirus versions: ;Avast (latest version)
AVG (latest version)
COMODO
Kaspersky: IS-11 and above
McAfee
Microsoft Forefront Endpoint Protection-2008
Microsoft Security Essentials
Microsoft Windows Firewall
Trend Micro
Windows Defender Firewall

Supported operating systems

Microsoft - Support for Windows 7 and above
Apple - Support for Mac OS X 10.7 and above
Linux - Support for Red Hat Enterprise Linux 4 and above, Ubuntu 12.x LTS and 14.x LTS,
Community Enterprise Operating System (CentOS) 4 and above, Fedora Core 5 and above, and
SUSE Linux 10.x

Differentiator

In addition to anti-virus, anti-spyware and personal firewall audits performed by traditional NAC products, Aruba OnGuard Software agents perform advanced posture assessments for Windows endpoints, such as the handling of peer to peer applications, VM applications and USB storage devices, with optional automatic remediation for the OnGuard persistent and MS/Linux NAP agents.
The Policy Manager can also take action using periodic information from the agent to perform post-authentication checks

Warranty

90 days- Extended with support contract

For additional technical information, available models and options, please reference the [QuickSpecs](#)

ARUBA GLOBAL SERVICES

Aruba Global Services simplifies and accelerates the network technology lifecycle, enabling your network to scale with better predictability and cost-effectiveness. Whether you operate your own network and need to improve your IT efficiencies or you want to offload some of the burden, we have the services you need to reach your goals.

Learn more about what Aruba Global Services has to offer at: arubanetworks.com/services/



Support Services from Aruba

Support services reduce complexity and increase your team's productivity, ensuring you keep pace with technology advances and software releases, and obtain break-fix support required to keep your network running. Access to premium services means you have the right help at the right time.

Professional Services from Aruba

With deep intellectual capital and purpose-built tools, our team delivers a range of standard and custom professional services designed to accelerate your value from Aruba technology.

QuickStart Services include:

- Planning, audit and assessment
- Architecture review and design
- Deployment, migration, and knowledge transfer

Proactive Engineering Services include:

- Intelligent Operations
- Customer Experience Management
- Network optimization

Our **Education Services** allow your team to come up to speed quickly.

Aruba Network as-a-Service (NaaS)

Our NaaS solution, Aruba Managed Connectivity Services, part of the HPE GreenLake services family, simplifies network operations, accelerates equipment handling, and increases the value of your Aruba network. If you need expert guidance and automation-based operations for your team, please explore the NaaS approach from Aruba [here](#).

Make the right purchase decision.
Contact our presales specialists.



Chat now (sales)



Buy now



Share now



Get updates

© Copyright 2022 Hewlett Packard Enterprise Development LP. The information contained herein is subject to change without notice. The only warranties for Hewlett Packard Enterprise products and services are set forth in the express warranty statements accompanying such products and services. Nothing herein should be construed as constituting an additional warranty. Hewlett Packard Enterprise shall not be liable for technical or editorial errors or omissions contained herein.

Parts and Materials: HPE will provide HPE-supported replacement parts and materials required to maintain the covered hardware.

Parts and components that have reached their maximum supported lifetime and/or the maximum usage limitations as set forth in the manufacturer's operating manual, product quick-specs, or the technical product data sheet will not be provided, repaired, or replaced as part of these services.

Image may differ from the actual product
[PSN1009648564PLEN](#), July, 2022.