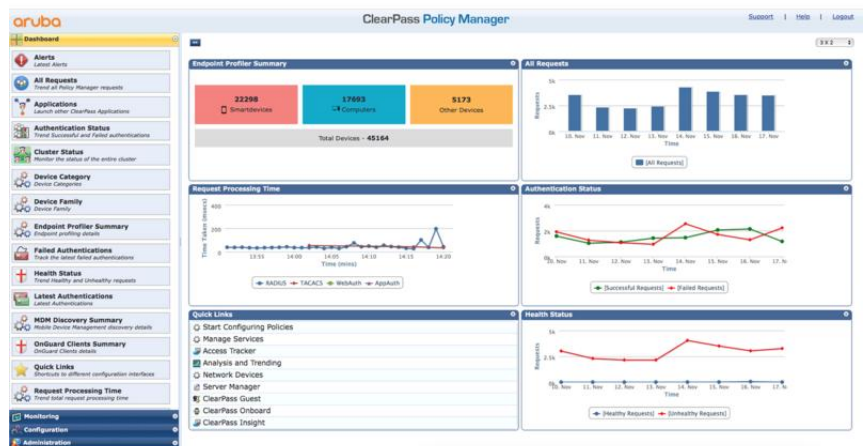


# ARUBA CLEARPASS GUEST SOFTWARE

Aruba Software



## OVERVIEW

Aruba ClearPass Guest Software is a scalable, easy-to-use visitor management solution that delivers secure automated guest access workflows for visitors, contractors, shoppers and partners on wireless and wired networks using any type of mobile device.

ClearPass Guest supports hundreds to thousands of guests, while reducing the threats associated with unauthorized guest access. ClearPass Guest operates on the ClearPass Policy Manager platform, which offers a core set of authentication, authorization, accounting, profiling of devices, reporting and policy

enforcement capabilities.

## FEATURES

### Highly Customizable Guest Portals

Aruba ClearPass Guest Software provides customizable logins with the ability to display the latest corporate branding, messaging and promotional offers.

Data entry field customization allows for capturing additional information about guests, support for rotating background images and a variety of built-in remediation pages allow full portal customization for a variety of business uses.

Logos, visual imagery and optional advertisements provide an opportunity to extend company messaging and promotional offers.

### Advanced Social Logins

Aruba ClearPass Guest Software delivers functionality that enables retailers and public venues to gather valuable demographics about guests that opt-in to guest Wi-Fi using Facebook, Twitter and other social media credentials.

### Third-Party Integration

Aruba ClearPass Guest Software automates the generation of guest credentials by integration with leading property management, patient management and other third party systems.

Some of the leading third party system are: Micros OPERA PMS, Protel PMS, Silverbyte Optima PMS, Agilysis Visual One PMS and more.

### Role-based Policy Enforcement

Aruba ClearPass Guest Software provides customized guest credentials and access privileges to enforce bandwidth limits, access to specific resources and length of connection.

MAC caching can be also be used to ensure that guests are not repeatedly asked to enter login and passwords each time they re-connect to the guest network for a set period of time.

## Technical specifications

## Aruba ClearPass Guest Software

---

### Support infrastructure vendors

Automate the generation of guest credentials by integrating ClearPass Guest with leading property management, patient management and other third-party systems such as: Micros OPERA PMS, Protel PMS, Silverbyte Optima PMS, Agilysis Visual One PMS, and more.

---

### Differentiator

Aruba ClearPass Guest Software operates on the ClearPass Policy Manager platform, which offers a core set of authentication, authorization, accounting, profiling of devices, reporting and policy enforcement capabilities. This ensures that the platforms scalability, redundancy, management and reporting features can be leveraged for guest and any employee-based policy enforcement needs.

---

### Warranty

90 days - Extended with support contract

---

For additional technical information, available models and options, please reference the [QuickSpecs](#)

## ARUBA GLOBAL SERVICES

Aruba Global Services simplifies and accelerates the network technology lifecycle, enabling your network to scale with better predictability and cost-effectiveness. Whether you operate your own network and need to improve your IT efficiencies or you want to offload some of the burden, we have the services you need to reach your goals.

Learn more about what Aruba Global Services has to offer at: [arubanetworks.com/services/](https://arubanetworks.com/services/)



### Support Services from Aruba

Support services reduce complexity and increase your team's productivity, ensuring you keep pace with technology advances and software releases, and obtain break-fix support required to keep your network running. Access to premium services means you have the right help at the right time.

### Professional Services from Aruba

With deep intellectual capital and purpose-built tools, our team delivers a range of standard and custom professional services designed to accelerate your value from Aruba technology.

**QuickStart Services** include:

- Planning, audit and assessment
- Architecture review and design
- Deployment, migration, and knowledge transfer

**Proactive Engineering Services** include:

- Intelligent Operations
- Customer Experience Management
- Network optimization

Our **Education Services** allow your team to come up to speed quickly.

### Aruba Network as-a-Service (NaaS)

Our NaaS solution, Aruba Managed Connectivity Services, part of the HPE GreenLake services family, simplifies network operations, accelerates equipment handling, and increases the value of your Aruba network. If you need expert guidance and automation-based operations for your team, please explore the NaaS approach from Aruba [here](#).

Make the right purchase decision. Contact our presales specialists.



Chat now (sales)



Call now



Share now



Get updates

© Copyright 2022 Hewlett Packard Enterprise Development LP. The information contained herein is subject to change without notice. The only warranties for Hewlett Packard Enterprise products and services are set forth in the express warranty statements accompanying such products and services. Nothing herein should be construed as constituting an additional warranty. Hewlett Packard Enterprise shall not be liable for technical or editorial errors or omissions contained herein.

Parts and Materials: HPE will provide HPE-supported replacement parts and materials required to maintain the covered hardware.

Parts and components that have reached their maximum supported lifetime and/or the maximum usage limitations as set forth in the manufacturer's operating manual, product quick-specs, or the technical product data sheet will not be provided, repaired, or replaced as part of these services.

Image may differ from the actual product [PSN1009437130IDEN](#), July, 2022.