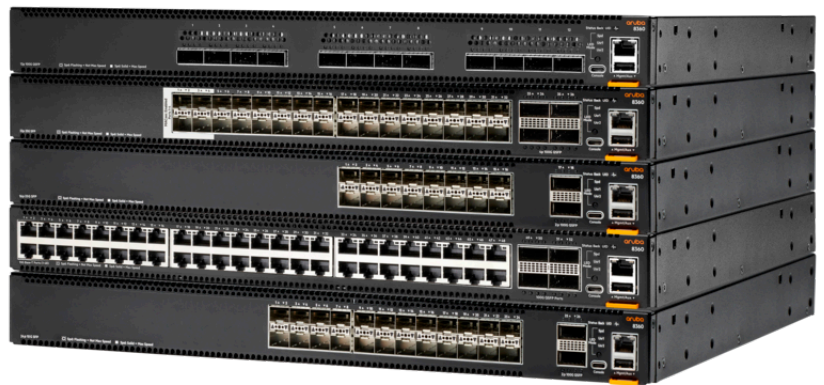


ARUBA 8360-12C PORT TO POWER 3 FANS 2 PSU BUNDLE (JL708A)

Fixed Port L3 Managed Ethernet Switches



WHAT'S NEW

- Provides a unified operating model (AOS-CX) from wired campus networks to emerging edge and distributed 10/25/40/100GbE connected data centers, server racks and wiring closets.
- Supports API-driven based, software-defined orchestration with Aruba Fabric Composer.
- Supports MACsec to enable secured

OVERVIEW

The Aruba CX 8360 Switch Series is a modern, intelligent family of high-performance 1/10/25/40/100 GbE switches designed both for enterprise campus cores and data centers needing top-of-rack server connectivity and scale-out, rack-rack, spine, and leaf fabric topology aggregation. The Aruba CX 8360 Switch Series offers a flexible and innovative solution for addressing the application, security, and scalability demands of emerging end-to-end, enterprise edge-

10 and 25GbE connectivity in untrusted environments.

- Intelligent monitoring and visibility with Aruba Network Analytics Engine.
- High availability with VSX redundancy, and redundant power supplies and fans.
- Advanced Layer 2/3 feature set includes BGP, OSPF, VRF, VxLAN, RoCEv2, and IPv6 at no additional software license cost.

cloud network connectivity requirements. The Aruba CX 8360 Switch Series simplifies campus core and data center network and IT operations through a combination of cutting-edge hardware, a cloud-native operating system, and intuitive software-defined orchestration tools. By providing intelligent automation, distributed analytics, and always-on infrastructure, customers can simplify operations, improve IT efficiency, and enable always-on network availability.

FEATURES

High-speed Fully Distributed Architecture

The Aruba CX 8360 Switch Series offers multi-terabit switching capacity with line rate Gigabit Ethernet to meet the demands of bandwidth-intensive applications.

Wire speed, line rate connectivity, and flexibility for 1/10/25GbE (SFP/SFP+/SFP28) and 40/100 GbE (QSFP+/QSFP28) featured in a compact 1U form factor.

4x10Gbps and 4x25Gbps break out from 40/100G ports offers advanced flexibility in connectivity and aggregation.

MACsec support enables secured connectivity at 10 and 25GbE speeds in untrusted environments.

Investment protection allows customers to migrate from older 1GbE/10GbE to faster 25GbE, or 10GbE/40GbE uplinks to 100GbE ports.

Simplified IT Operations

The Aruba CX 8360 Switch Series simplifies network design and operations for both campus and emerging enterprise edge data centers by offering a consistent, cloud-native architecture and operating model that spans switching platforms and deployment domains.

Aruba AOS-CX end-to-end operating system enables a consistent operator experience across the network with full automation, security, and visibility. Tight integration into other 3rd party management stacks (HCI and Virtualized) for a seamless configuration and operational experience.

Aruba AOS-CX provides an always-on, resilient network operating system and infrastructure that automatically isolates software failures and provides for non-disruptive recovery.

Aruba Virtual Switching Extension (VSX) provides a redundant architecture in both hardware and software to facilitate no downtime—even during upgrades—across campus and data center networks.

Accelerated Service Provisioning

The Aruba CX 8360 Switch Series speeds infrastructure provisioning with software-defined fabric automation and orchestration.

REST APIs and Python scripting provide fine-grained programmability. Microservices architecture enables full integration with other workflow systems and services.

Aruba NetEdit empowers IT teams to orchestrate configuration changes across multiple switches using intelligent automation and analytics, verifying service rollouts are consistent, conformant, and error-free.

Supports API-driven based, software-defined orchestration with Aruba Fabric Composer to simplify and accelerates leaf-spine network fabric provisioning across rack-scale compute and storage infrastructure.

Increased Visibility and Control

The Aruba CX 8360 Switch Series provides real-time, network-wide visibility with analytics in every switch. Troubleshoot and fix problems faster with Aruba IOPs by automatically detecting and dynamically solving network issues before your business is impacted.

Integrated Network Analytics Engine (NAE) performs intelligent monitoring, detects problems in real time, and analyzes trends to help predict or even avoid future security and performance issues.

Support for VMware® NSX seamlessly bridges physical and virtual infrastructure, delivering unprecedented performance, agility, and security for data center networks.

When used with Aruba Fabric Composer, administrators gain end-to-end network visibility between virtual machines, port groups, vSwitches, physical NICs, and how they are all connected to Aruba CX switch ports. This greatly simplifies troubleshooting of connectivity and performance problems.

Technical specifications

Aruba 8360-12C Port to Power 3 Fans 2 PSU Bundle

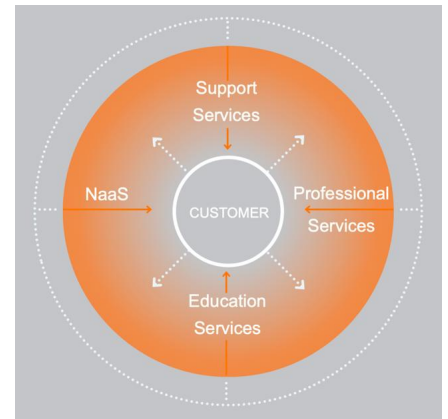
Product Number	JL708A
Differentiator	Modern, intelligent, high-performance switch designed for enterprise campus cores and data centers needing top-of-rack server connectivity and scale-out, rack-rack, spine, and leaf fabric topology aggregation. Flexible and innovative approach to addressing the application, security, and scalability demands of emerging end-to-end, enterprise edge-cloud network connectivity requirements. This model has 12x 40GbE/100GbE. Port-to-power airflow.
Ports	12 ports of 40GbE/100GbE (QSFP+/QSFP28) (optional 4x10G/25G breakout cables supported)
Memory and processor	1.8 GHz 4-core 64-bit 16GB RAM, 32GB Flash/Storage
Latency	1µs
Throughput	2,000 Mpps
Routing/switching capacity	2.4Tbps, maximum, depending on model
Input voltage	100-127 and 200-240 VAC
Power Consumption	550W, maximum
Product Dimensions (metric)	44.0 x 442.5 x 406.4 mm
Weight	8.01 kg

For additional technical information, available models and options, please reference the [QuickSpecs](#)

ARUBA GLOBAL SERVICES

Aruba Global Services simplifies and accelerates the network technology lifecycle, enabling your network to scale with better predictability and cost-effectiveness. Whether you operate your own network and need to improve your IT efficiencies or you want to offload some of the burden, we have the services you need to reach your goals.

Learn more about what Aruba Global Services has to offer at: arubanetworks.com/services/



Support Services from Aruba

Support services reduce complexity and increase your team's productivity, ensuring you keep pace with technology advances and software releases, and obtain break-fix support required to keep your network running. Access to premium services means you have the right help at the right time.

Professional Services from Aruba

With deep intellectual capital and purpose-built tools, our team delivers a range of standard and custom professional services designed to accelerate your value from Aruba technology.

QuickStart Services include:

- Planning, audit and assessment
- Architecture review and design
- Deployment, migration, and knowledge transfer

Proactive Engineering Services include:

- Intelligent Operations
- Customer Experience Management
- Network optimization

Our **Education Services** allow your team to come up to speed quickly.

Aruba Network as-a-Service (NaaS)

Our NaaS solution, Aruba Managed Connectivity Services, part of the HPE GreenLake services family, simplifies network operations, accelerates equipment handling, and increases the value of your Aruba network. If you need expert guidance and automation-based operations for your team, please explore the NaaS approach from Aruba [here](#).

Make the right purchase decision. Contact our presales specialists.

[Find a partner](#)



Chat now (sales)



Call now



Buy now



Share now



Get updates

aruba
a Hewlett Packard
Enterprise company

© Copyright 2022 Hewlett Packard Enterprise Development LP. The information contained herein is subject to change without notice. The only warranties for Hewlett Packard Enterprise products and services are set forth in the express warranty statements accompanying such products and services. Nothing herein should be construed as constituting an additional warranty. Hewlett Packard Enterprise shall not be liable for technical or editorial errors or omissions contained herein.

Parts and Materials: HPE will provide HPE-supported replacement parts and materials required to maintain the covered hardware.

Parts and components that have reached their maximum supported lifetime and/or the maximum usage limitations as set forth in the manufacturer's operating manual, product quick-specs, or the technical product data sheet will not be provided, repaired, or replaced as part of these services.

Image may differ from the actual product
[PSN1013094474TREN](#), September, 2022.