



At a glance

HPE GreenLake

come C

king

al

switching, W

WAN

ture for cam

h networks

ation, and

king Products

Services

Cloud

se

oud experien

for vms, containers and

bare metal in your priva

environment.

**HPE** aruba  
networking

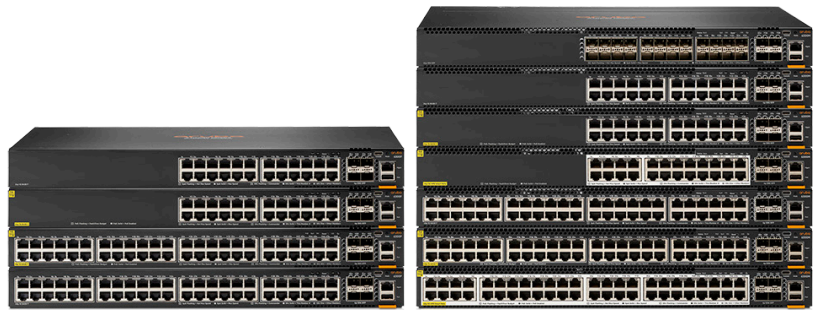
# Why upgrade to the HPE Aruba Networking CX 6300 Switch Series

HPE GreenLake



### Why choose the HPE Aruba Networking CX 6300?

- **Future ready:** Seamlessly supports Wi-Fi 6 and IoT with Smart Rate multi-gigabit and 60W PoE ports.
- **Flexible:** Mix modular and fixed models in single stack that spans across campuses and sites.
- **Superior performance:** Built-in wire speed 10GbE/25GbE/50GbE uplinks for demanding environments.
- **Real-time insights:** Automated analytics for rapid troubleshooting and resolution.
- **Resiliency:** Built-in high availability with VSF stacking and Always-On PoE.
- **Simple, secure, and scalable segmentation:** Automated, unified role-based policies for users, IoT and devices with HPE Aruba Networking Dynamic Segmentation.
- **Fully manageable:** Flexibility to manage and simplify configurations with HPE Aruba Networking Central, HPE Aruba Networking Switch Multi-Edit Software, easy to use Web GUI or industry standard CLI.
- **Simplified IT operations:** Common AOS-CX operating system used across the HPE Aruba Networking CX portfolio provides a more consistent, more efficient operator experience.



**Figure 1.** HPE Aruba Networking CX 6300 Switch Series

Is your enterprise network ready to quickly and safely connect new IoT devices, powerful enough to handle new traffic loads and smart enough to help IT more efficiently operate, manage, and secure the network?

**Prepare your network with a switch that is ready to handle it all — the HPE Aruba Networking CX 6300 Switch Series is a modern, flexible, and intelligent family of stackable switches ideal for enterprise network access, aggregation, core, and data center top of rack (ToR) deployments.**

A powerful architecture supports scalable, non-blocking performance for future-proofing your network for tomorrow's unpredictable demands. This series has built-in high-speed uplinks and includes models with 24 SFP+ ports and full density 60W PoE with multi-gigabit Ethernet for a high performance, IoT and Wi-Fi 6 ready network.

The HPE Aruba Networking CX 6300 switches are built using a cloud-native design and a modern operating system built on a microservices architecture to automate and simplify IT operations. AOS-CX delivers network-wide analytics and full programmability to enable complete network assurance. Easy-to-use configuration tools enable error-free installs while monitoring and analytics capabilities across the network provide operators with immediate troubleshooting and insights. And the CX 6300 provides lasting value and simplifies ownership with no switch software licensing and a Limited Lifetime Warranty.



## HPE Aruba Networking switch comparison

Category	Feature	HPE Aruba Networking 2930M	HPE Aruba Networking 3810M	HPE Aruba Networking CX 6300	Upgrade benefit
<b>Platform</b>	Deployment Model	Access	Access Aggregation	Access Aggregation	<b>Simplicity of a single operating system, from edge access to data center</b>
	Operating System	AOS-Switch	AOS-Switch	Cloud-native AOS-CX	
	Microservices-based Architecture	–	–	Yes	
	ASIC	HPE Aruba Networking Gen6	HPE Aruba Networking Gen6	HPE Aruba Networking Gen7 with Virtual Output Queuing (VOQ)	
	Network State & Time Series Database	–	–	Yes	
<b>Scale, performance, flexibility</b>	Switching Capacity	320 Gbps	480 Gbps	880 Gbps	<b>Future-proof networking with on-demand growth</b>
	Smart Rate (1/2.5/5GbE)	Up to 28 ports	Up to 12 ports	Up to 48 ports	
	10G	Up to 4 ports	Up to 24 ports	Up to 28 ports	
	25G	–	–	4 built-in 1/10/25/ 50G <sup>1</sup> combo ports	
	40G	Up to 1 port	Up to 2 ports	–	
	50G	–	–	4 built-in 1/10/25/ 50G <sup>1</sup> combo ports	
	PoE Power	30W per port Up to 1440W	30W per port Up to 1440W	60W per port Up to 2880W	
<b>High availability</b>	Hot-swappable power supplies and fans	Yes	Yes	Yes	<b>High availability from edge access to the core</b>
	Stacking	Backplane (10)	Backplane (10)	VSF stacking (10)	
	Always-on PoE	–	–	Yes	
<b>Segmentation</b>	HPE Aruba Networking Dynamic Segmentation	Yes	Yes	Yes	<b>Unified role-based security from edge access to the core</b>
	VXLAN (with MP-BGP EVPN)	–	–	Yes	

<sup>1</sup> 50G capability is for use with 50G DACs for both interconnect and VSF stacking. 50G transceiver capability enabled by future software release.



Category	Feature	HPE Aruba Networking 2930M	HPE Aruba Networking 3810M	HPE Aruba Networking CX 6300	Upgrade benefit
<b>Analytics and automation</b>	Programmability	Limited	Limited	Complete REST APIs	<b>Visibility and analytics at edge access for simplified operations and troubleshooting</b>
	Distributed analytics	–	–	Yes, NAE embedded analytics in each switch	
<b>Management</b>	CLI	Yes	Yes	Yes	<b>Simplified network wide management</b>
	Web GUI	Yes	Yes	Yes	
	Advanced Configuration	–	–	HPE Aruba Networking Central Multi-editor, HPE Aruba Networking Switch Multi-Edit Software	
	Cloud-based Management	HPE Aruba Networking Central	HPE Aruba Networking Central	HPE Aruba Networking Central	
<b>Licensing and warranty</b>	Licensing and Subscription	No software feature licensing or subscription required			<b>TCO value with no hidden costs</b>
	Warranty	Limited Lifetime Warranty— <a href="#">warranty information</a>			

**Why choose HPE Aruba Networking CX switches?**

The nature of business is changing—collaborative work environments, non-routine schedules, and a workforce that expects to work anytime, anywhere. As a result, organizations are adjusting their physical and technology designs to accommodate this change, and HPE Aruba Networking switches are optimized for this new digital workplace. HPE Aruba Networking switches deliver wireless integration, security, performance and value through innovative technologies that form the wired network foundation for enterprises, SMBs and branch offices.

**Customer first customer last support**

When your network is important to your business, then your business needs the backing of [HPE Aruba Networking Support Services](#). Partner with HPE Aruba Networking product experts to increase your team productivity, keep pace with technology advances and software releases and obtain break-fix support. Our Foundation Care for HPE Aruba Networking support services include priority access to HPE Aruba Networking Technical Assistance Center (TAC) engineers 24x7x365, flexible hardware and onsite support options and total coverage for HPE Aruba Networking products.

**Network migration services**

HPE Aruba Networking offers industry-leading global high touch [Professional Network Services](#) for network design, installation and enablement services. Work with our team of HPE Aruba Networking experts and partners that have in-depth technical know-how to accelerate and simplify your migration to AOS-CX.



## At a glance

### Become an expert on CX

[HPE Aruba Networking Education Services](#) offers comprehensive training and certification programs from fundamental to advanced levels to give you the skills to fully utilize the power of AOS-CX.

For more information on HPE Aruba Networking CX access switches and the CX6300, please visit:

[arubanetworks.com/products/switches/](https://arubanetworks.com/products/switches/)

Make the right purchase decision.  
Contact our presales specialists.



Contact us

Visit [ArubaNetworks.com](https://ArubaNetworks.com)

