



The superior choice for connected learning



With HPE Juniper Networking, driven by HPE Mist AI, our wired and wireless network solutions provide your district with exceptional student, educator, and device experiences across traditional, remote, and hybrid instructional models.

Top 10 reasons why

1 Maximizes learning outcomes through great user experiences

The first and only solution that measures the experience of every student and educator, every minute to make it proactively better for all.

2 Future-proofs your district with a modern network architecture

The only solution providing weekly feature updates—with no downtime or the complexities of upgrading controllers or access points in controller-based architectures.

3 Adds bench strength to IT team

Let the Marvis AI Assistant do the heavy work of locating and troubleshooting problems quickly so IT can solve issues fast and stay ahead of trouble.

4 Stops chasing IT ghosts

HPE patented, dynamic packet capture technology captures packets automatically when an issue occurs.

5 Keeps learning going with the only AI-Native network management

HPE Juniper Networking powerful AI-Native networking tools deliver end-to-end insights for monitoring, troubleshooting, and streamlining operations and support.

6 Set up personal Wi-Fi space for educators and learners

Give educators control of their classroom with per-user, pre-shared keys. You can enable security at scale, while using the same SSID to establish Wi-Fi bubbles for classrooms, users, or IoT devices.

7 The network takes care of itself

Automated radio management and AI-driven, self-healing help maintain a great user experience, reducing the number of support help tickets typically associated with legacy school networks.

8 Speeds error-free network provisioning

Using 100% API-driven automation, all devices and connected clients are automatically detected and configured for faster processes, minimizing human errors.

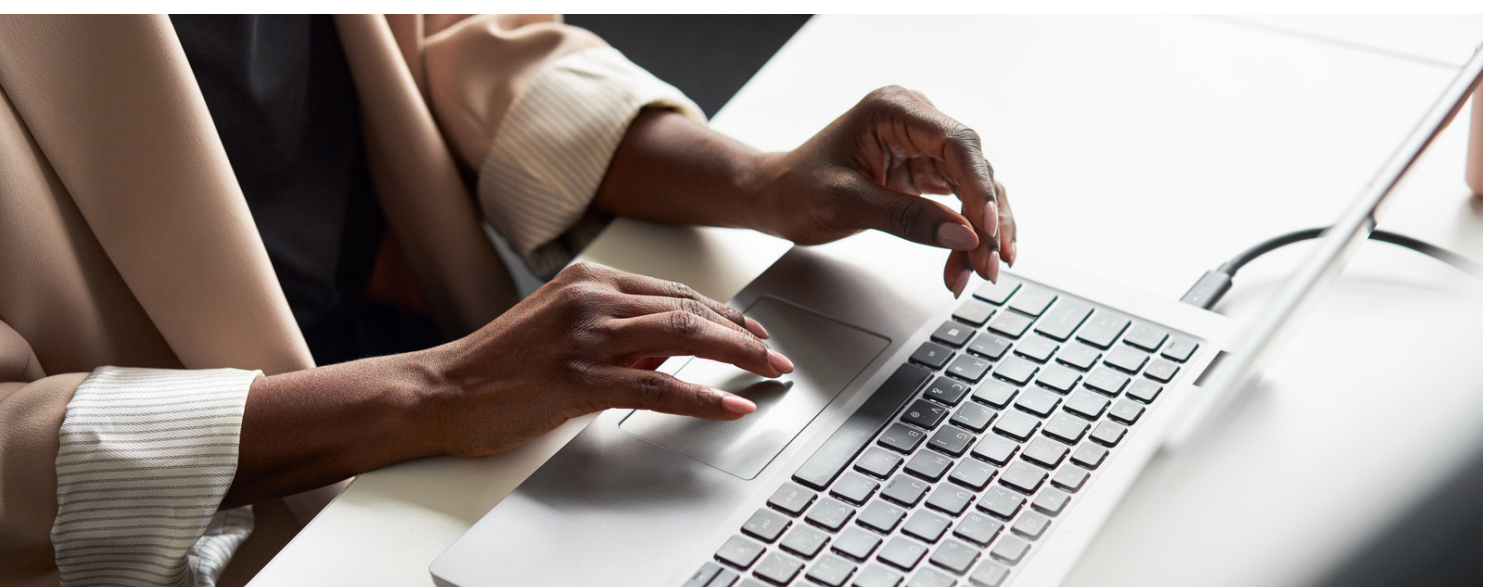
9 Enhances digital experiences with location-based services

Location-based services can be turned on with optional software subscriptions through the integrated, patented Bluetooth antenna arrays in HPE Juniper Networking access points to avoid battery-operated beacons.

10 Lowest TCO

Unlike traditional, controller-based architectures, K-12 districts with Juniper Wireless Deployment Services realize:

- faster network deployments
- fewer trouble tickets
- faster mean time to repair
- easier and more cost-efficient operations



Visit [HPE.com](https://www.hpe.com)

Want to know more about what analysts are saying about HPE Juniper Networking enterprise wired and wireless LAN infrastructure? Read the [2024 Gartner® Magic Quadrant™ for Enterprise Wired and Wireless LAN Infrastructure report](#).

[Chat now](#)

© Copyright 2026 Hewlett Packard Enterprise Development LP. The information contained herein is subject to change without notice. The only warranties Hewlett Packard Enterprise products and services are set forth in the express warranty statements accompanying such products and services. Nothing herein should be construed as constituting an additional warranty. Hewlett Packard Enterprise shall not be liable for technical or editorial errors or omissions contained herein.

Bluetooth is a trademark owned by its proprietor and used by Hewlett Packard Enterprise under license. All third-party marks are property of their respective owners.

a00151415ENW

HEWLETT PACKARD ENTERPRISE

[hpe.com](https://www.hpe.com)

