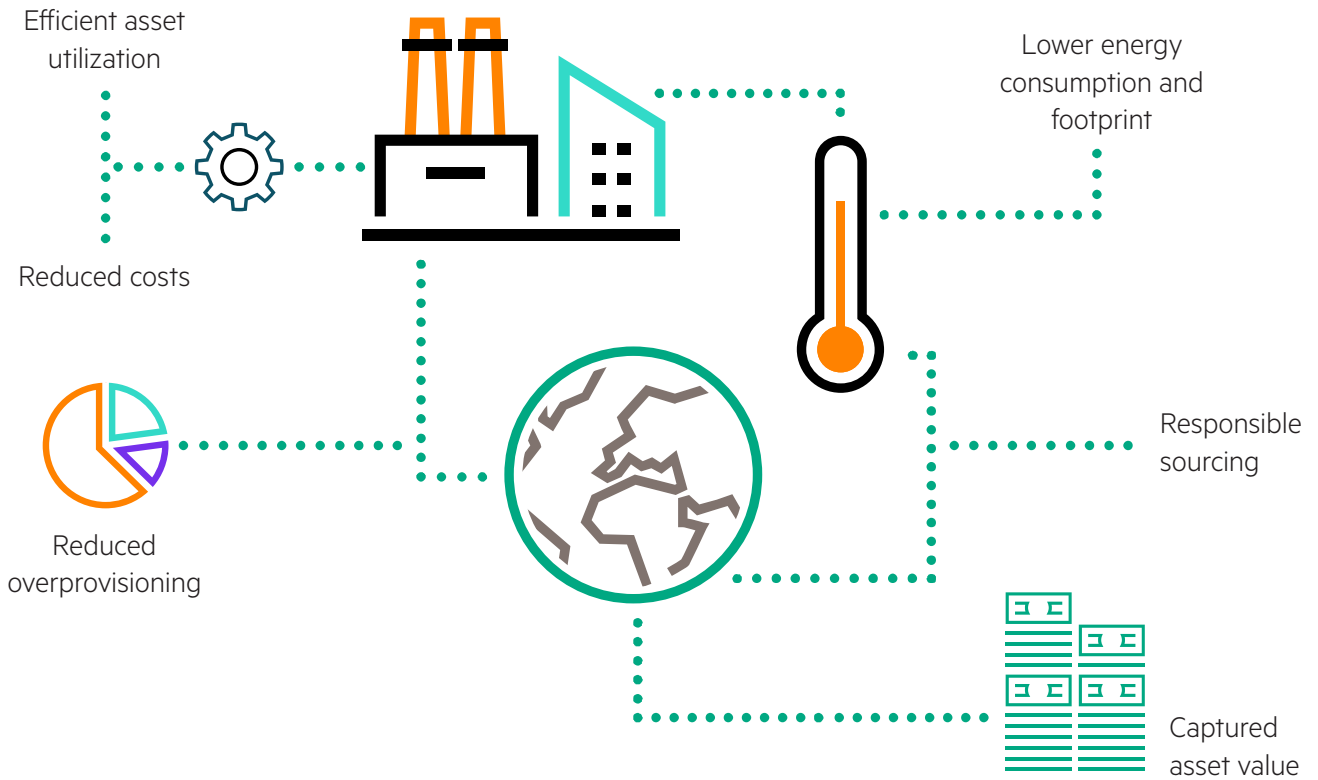


Sustainability as a catalyst

Helping you achieve business outcomes with sustainable IT solutions

Organizations leverage sustainability as a catalyst for brand differentiation, game-changing optimization and smarter economics.

How sustainability leadership benefits you



Pathways to sustainability

We meet our customers wherever they are on their journey to advance their sustainability agenda—very often connected to [digital transformation](#) and data-first modernization initiatives—with pathways to:

- Sustainable transformation with expertise and design**
Experts help you look across your hybrid estate to identify inefficiencies—and the needs for every workload with efficiency and optimization the goal as we look for opportunities to advance your sustainability goals, reduce footprints and energy consumption and costs too.
- Operational efficiency and visibility**
Solutions and technology that deliver cost savings, efficiency gains and reduce the environmental impact of IT by enabling organizations to flexibly scale their IT to meet their needs, thereby improving utilization levels and avoiding the waste of overprovisioning.
- Full asset lifecycle management**
Managing the asset lifecycle holistically is key to implementing sustainable IT. We help organizations extend the useful life of tech assets, upcycle what they don't need, and infuse capital back to help fund their transformation and other strategic initiatives.

\$10M in energy costs saved by a single customer as a result of HPE Pointnext Services	3M assets returned to our Technology Renewal Centers
	85% given a new life

HPE GreenLake achieves a more than 30% ¹ reduction in energy costs when a CAPEX model and HPE GreenLake are compared over a 5-year lifecycle.	The HPE Apollo 2000 enables up to 50% ² infrastructure saving compared to 1P/2P rack servers and provides up to 54% ³ higher efficiency than other 4-node systems.	HPE Financial Services, has provided more than \$500M ⁴ infused back into our customers budget from upcycling and accelerated migration programs.
---	--	---

HPE quick facts

- \$500M** returned via HPE Accelerated Migration and HPE Asset Upcycling Services last year⁶
- 6000+** patents with low-carbon applications since 2000, including photonics and non-volatile memory⁵
- ~50%** of our products have sustainability and IT efficiency attributes⁸
- 80** locations with HPE return and recycling programs⁷
- 1st** IT company to set science-based climate targets across our value chain⁹

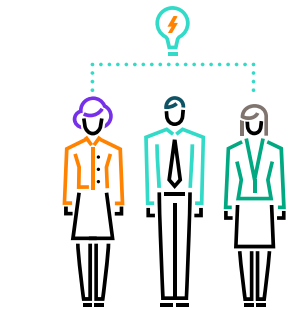
Why HPE?

HPE's 30-year history of leadership is unmatched by our competitors, including industry-first standards, targets, and coalitions.

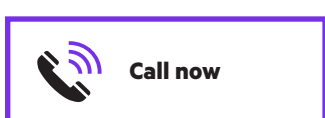
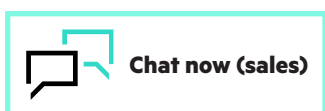
We maintain industry leadership on the highest trusted ratings and rankings.

In 2021:

- EcoVadis Platinum
- Dow Jones Sustainability World Index
- Ethisphere World's Most Ethical Companies



Make the right purchase decision. Contact our presales specialists.



Learn more at hpe.com/info/sustainable-it



¹ Reference Guide: Energy Cost Savings of HPE GreenLake Versus Traditional CAPEX Purchase Methodology, 2021
² SPEC and SPECpower_ssj are registered trademarks of the Standard Performance Evaluation Corporation (SPEC); all rights reserved. see [spec.org](https://www.spec.org) as of March 15, 2021; 4-, 3-, 2-node configurations and 4-, 3-, 2-node 2-processor configurations for the overall, Linux®, and Windows categories.
³ Annual energy cost and rack space calculated based on performance envelope of a 42U rack populated with HPE ProLiant XL225n Gen10 Plus servers running at 100% versus the energy and rack space required by competitor products to achieve the same performance. Average price for kWh = \$0.0693.
^{4, 5, 6, 7, 8, 9} Based on internal calculations.
 © Copyright 2023 Hewlett Packard Enterprise Development LP. The information contained herein is subject to change without notice. The only warranties for Hewlett Packard Enterprise products and services are set forth in the express warranty statements accompanying such products and services. Nothing herein should be construed as constituting an additional warranty. Hewlett Packard Enterprise shall not be liable for technical or editorial errors or omissions contained herein.
 Linux is the registered trademark of Linus Torvalds in the U.S. and other countries. Windows is either a registered trademark or trademark of Microsoft Corporation in the United States and/or other countries. All third-party marks are property of their respective owners.
 a00102272ENW, Rev. 4