

# Mitigating risk with a managed security solution from HPE Managed Services





## HPE Managed Security from HPE Managed Services, part of a complete security, risk, and compliance portfolio

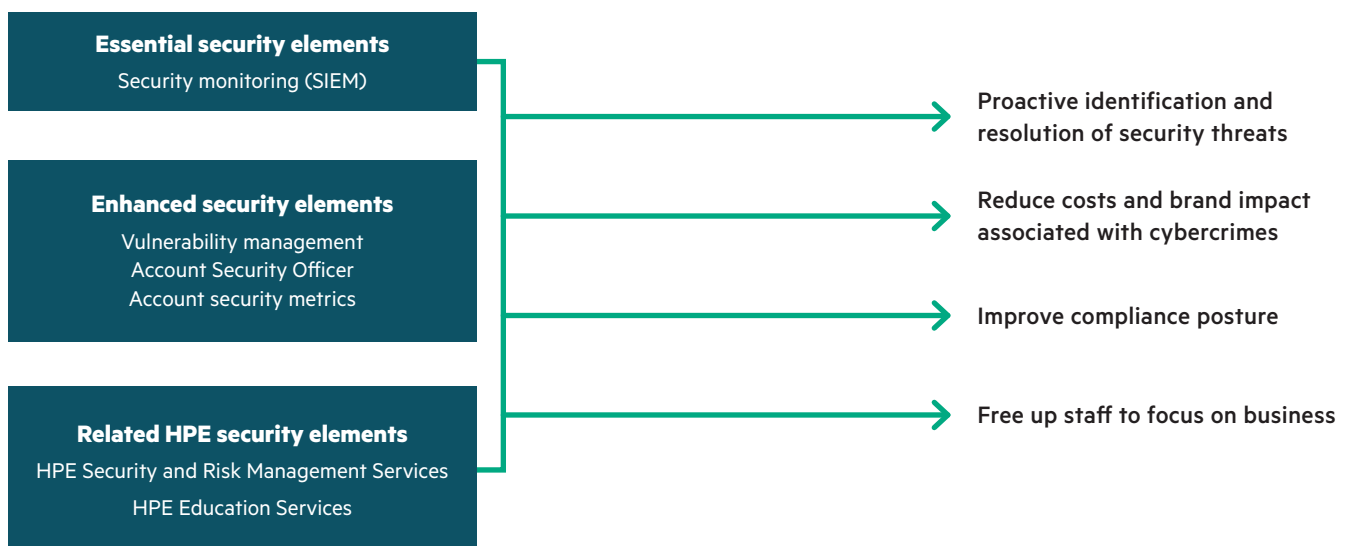
HPE Managed Security enhances the HPE Managed Services customer environment by offering services that include security monitoring, vulnerability management, security hardening with the attention and accountability of an Account Security Officer.

### Managing organizational risk with managed services providers

Despite efforts to prevent, identify, and contain data breaches and cybersecurity incidents, security gaps in your IT infrastructure may be preventing you from quickly detecting attacks and breaches. These incidents can cause reputational damage, lost business, regulatory penalties, civil lawsuits, unplanned downtime, and loss of critical information, resulting in potentially large financial costs.

Even with increasing awareness of these risks, and an associated increase in security- and compliance-related spending, managing IT security still presents an array of challenges, including skills gaps, siloed tools, complexity, and lack of automation. And these challenges only grow when you consider outsourcing operations to a third-party service provider: because while operations can be outsourced, the organizational risks of security and compliance failure can't be.

## HPE Managed Services: Managed Security

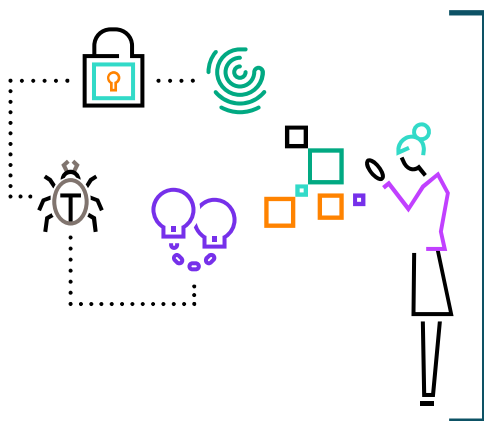






## Reduce your organizational risk with HPE Managed Security

HPE Managed Security is an essential addition to an HPE Managed Services engagement. It helps protect you from risks to your outsourced resources by delivering security expertise and experience, simplified processes, and a holistic management solution — all aimed at reducing organizational risk. Services include:



**Security monitoring:** End-to-end security incident management monitored by HPE security analysts that delivers security operations center (SOC) activities, including incident detection, response, containment, recovery, and post incident analysis and follow-up actions. To ensure that security incidents are identified and remediated swiftly, a log collection facility stores and correlates all incident logs that can be shared upon request with your SOC.

**Vulnerability management:** With industry-leading scanning technology and supported by robust security management processes, detected security vulnerabilities are identified, assessed, prioritized, and remediated in a timely manner. Regularly scheduled and ad hoc, on-demand scanning and vulnerability metrics are shared on a quarterly basis.

**Security hardening:** At the forefront of reducing the attack surface and mitigating security risk is the secure configuration of platforms. This service ensures that platforms are configured to meet HPE security best practices by providing HPE Managed Services with a baseline secure configuration that will provide high quality telemetry into your SOC platform, as well as a more secure configuration for your on-premises equipment.

**Account Security Officer (ASO):** The ASO is assigned as a service and is responsible for maintaining the relationship between your organization (including your SOC) and HPE with respect to security and regulatory requirements, audit governance, and risk management. The ASO is also responsible for maintaining the Security Handbook that includes guidelines on mutually agreed upon security processes and an incident response plan.



## Managed risk and peace of mind

The Ponemon Institute describes an IT security gap as the “inability of an organization’s people, processes, and technologies to keep up with a constantly changing threat landscape.”<sup>1</sup>

With HPE Managed Security from HPE Managed Services, you’ll have the people, processes, and technology you need to help identify and mitigate security threats. And with our long history of managed services experience, the capability to deliver end-to-end security management, and recent innovations in remote infrastructure management, you’ll have the confidence of knowing the security of your data, applications, and infrastructure are in capable hands.

## Closing the IT Security Gap

In June 2020, HPE sponsored a study on Closing the IT Security Gap conducted by Ponemon Institute. Of the 4,189 IT and IT security practitioners in three regions and ten countries who were surveyed:

- **61%** indicated they believe attacks that have reached inside the network have potential to do the greatest damage.
- Just **35%** have confidence that attacks inside the IT infrastructure can be detected quickly before they break out and cause a cybersecurity breach resulting in data stolen, modified, or viewed by unauthorized entities.
- Only **29%** of executives say they are highly effective in Closing the IT Security Gap.

According to respondents, compromised legitimate users and negligent users pose the greatest inside threat to the IT infrastructure.

## Security management you can trust

Although cybersecurity has long been a permanent feature, and cost, of doing business, many organizations are not fully prepared to meet the challenges that come with data breaches and the disruptive downtime, loss of revenue, and massive reputational damage they can cause. The Managed Security service from HPE Managed Services can help you mitigate this risk by proactively lifting the operational burden of cybersecurity off your shoulders while giving you peace of mind knowing your assets are safe and secure.

## A complete security, risk, and compliance portfolio

Managed Security is one of a portfolio of services from HPE Managed Services that help identify and remediate IT security gaps and provide ongoing monitoring and management. The security, risk, and compliance portfolio also includes:

**Managed IT Compliance:** Track compliance of more than 1,500 controls with an enterprise-wide view of regulatory and governance compliance from a single dashboard, while business event monitoring alerts you when key rule violations are detected in your multi-cloud environment.

**Managed Disaster Recovery:** Easily and quickly recover your data in the event of a disaster with dependable, reliable managed disaster recovery services. Streamline data protection with policy-based automation, built-in encryption, and ultra-efficient data reduction technology.

**Managed Backup:** Align data backups with your operational needs across data centers, clouds, and SaaS vendors. Simplify the management of your backups with an approach designed to meet your business recovery SLAs.

**Software Asset Management (SAM):** This software asset management and license optimization solution analyzes inventory, application usage, purchase order data, license entitlements, and contract terms to monitor/govern license under- and over-use and optimize license consumption.

<sup>1</sup> Download the HPE-sponsored Ponemon Institute **Closing the IT Security Gap** report at [hpe.com/us/en/resources/servers/ponemon-it-security-report.html](https://hpe.com/us/en/resources/servers/ponemon-it-security-report.html)



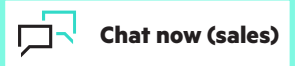
### **Advisory and Professional Services (A&PS):**

- Security Analysis and Roadmap Service
- Vulnerability Analysis Service (Penetration Testing)
- Transformation Workshops
- Backup Recovery Impact Analysis
- Disaster Recovery Technical Analysis
- Security Compliance Assessment
- Security Education Programs
- ISO 22301 Business Continuity Management



## **Learn more at**

[HPE.com/management-services](https://hpe.com/management-services)



© Copyright 2023 Hewlett Packard Enterprise Development LP. The information contained herein is subject to change without notice. The only warranties for Hewlett Packard Enterprise products and services are set forth in the express warranty statements accompanying such products and services. Nothing herein should be construed as constituting an additional warranty. Hewlett Packard Enterprise shall not be liable for technical or editorial errors or omissions contained herein.

a00107277ENW, Rev. 3