



HPE Mist and E-Rate

Maximize your E-Rate project with AI-native network digital learning



For K-12 education, the digital transformation is critically dependent on scalable, secure, reliable broadband connections. Unfortunately, weak, complex, and difficult to manage networks threaten this transition. For students and educators experiencing dropped or poor connections, digital learning and online assessments can suffer, causing learning outcomes to not be met. For many district network administrators, overly complex workflows and tools that focus primarily on network health rather than the end-user experience make troubleshooting and resolving these access issues exceedingly difficult.

AI-native digital learning-ready networks from HPE

Thankfully, districts no longer need to compromise nor invest valuable school district and E-Rate funds in networks built on outdated architectures. Unique to the industry, the HPE Networking AI-Native Platform addresses and greatly enhances E-Rate infrastructure projects with a modern, scalable, secure, and reliable network built with an integrated solution stack from HPE. By empowering IT team members with proactive

operations, the solution automatically identifies and fixes wired/wireless/device problems using machine learning. E-Rate applicants can now benefit from HPE:

- Proven and trusted enterprise-class, automated, and self-forming switch fabrics
- HPE Mist wireless LAN solution, the first cloud-based WLAN that leverages AI and machine learning to make Wi-Fi predictable, reliable, and measurable to ensure a great digital learning experience
- Reduced complexity, simplifying network operational and management workflow for the IT staff

Whether your district is planning an E-Rate Category One project that requires upgrading network equipment to boost broadband connection capacity, or an E-Rate Category Two project to modernize your data distribution, wireless data distribution, and data protection infrastructure, HPE has the right E-Rate-eligible solutions to fulfill the needs of institutions ranging from single-school campuses to large school districts. HPE Juniper Networking E-Rate-eligible solutions are also easy on the applicant's budget, offering lower estimated five-year TCO than the leading competitive brand.

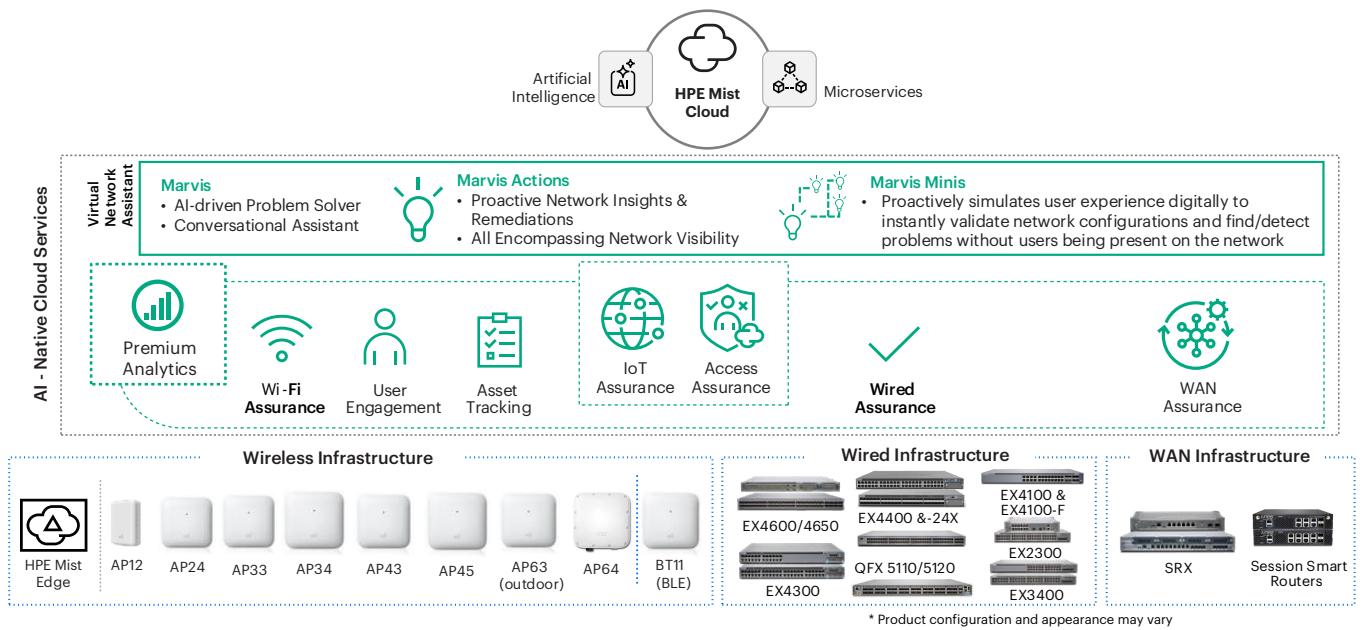


Figure 1. The HPE Mist digital learning network solution

Network switches

Juniper EX Series Switches: Designed for the converged school district campus and data center to address demands for high availability, unified communications, and virtualization, EX Series switches are cloud-ready, and they offer high-performance, scalable, fixed-configuration 1GbE, and multigigabit platforms. The fixed configuration 10GbE aggregation switches are ideal for high-density campus deployments, and the modular core switches are optimized for high-density, mission-critical applications. With the EX Series, wired access networks don't have to be complex and difficult to manage. Network administrators can easily onboard, configure, and manage the switches and operate campus fabrics at scale with HPE Mist platform cloud. When the EX Series is combined with the HPE Juniper Networking Wi-Fi portfolio for a unified wired and wireless solution, driven by HPE Mist AI, school districts gain simple and secure connectivity at scale. HPE Juniper Networking solutions reduce network complexities while addressing scalability by managing multiple devices as one. School districts can design end-to-end campus fabric architectures using Virtual Chassis technology or open, standards-based Ethernet VPN-Virtual Extensible LAN (EVPN-VXLAN) to avoid costly rip-and-replace upgrades.



* Product configuration and appearance may vary



* Product configuration and appearance may vary

Juniper QFX Series Switches: QFX Series Switches, ideally suited for district traffic aggregation points and data centers, improve the efficiency of district fiber networks by aggregating traffic for WAN and internet access transport. The QFX5100 line of Switches consists of scalable Layer 2/Layer 3 switches that are optimized for application delivery and contain a powerful feature set for virtualized data centers. The QFX10000 line of Switches offers a highly scalable, high-density network foundation for supporting today's most demanding data center and cloud environments, including midsize to large data centers, private clouds, and public clouds.



Junos operating system: All HPE switches, security platforms, and routers run Junos OS—the networking operating system that defines carrier-grade. With best-in-class protocol support, Junos OS offers the most flexible and capable CLI, including automation capabilities, open programmability for automation, and extensive libraries for Ansible, Python, Ruby, PowerShell, and others. Every HPE device with Junos OS includes configuration management. For example, the district’s network administrator can work on the switching infrastructure during the school day, writing configurations and testing, then when ready, “commit” the changes to the devices. This can even be done safely during the day since the device will not accept an incorrectly formed configuration. Junos OS can automatically recover in the event of a fat-fingered IP address or similar human error. With other network operating systems, such errors would result in significant downtime and be difficult to diagnose and resolve, often requiring a device reboot. Each HPE device holds up to 50 previous configurations and the district gets a full audit trail of changes made for easy comparison and for rollback to a previous configuration if needed for resolving problems quickly.

Wireless access points



* Product configuration and appearance may vary

Juniper Series of High-Performance Access Points: Designed for the demands of digital learning, HPE makes Wi-Fi predictable, reliable, and measurable by providing unprecedented visibility into the user experience. Wi-Fi, Bluetooth Low Energy (BLE), and IoT are merged with our enterprise-grade access points. They work in conjunction with the HPE Mist platform cloud and HPE Mist AI so school districts can easily customize Wi-Fi service levels, easily provide guest services, quickly identify compliant and noncompliant devices for assessment readiness, replace frustrating, time-consuming manual IT tasks with proactive automation, gain insights through detailed analytics, and leverage location-based services to support functions such as contact tracing and locating valuable assets.

HPE Mist AI and cloud services



HPE Mist AI and Cloud Family of Services: District network administrators save time and money with faster problem resolution and fewer on-site campus visits. Educators, students, and staff benefit from a network infrastructure that is more predictable, reliable, and measurable. HPE Mist AI uses a combination of artificial intelligence, machine learning, and data science techniques to optimize user experiences and simplify operations across the wireless access, wired access, and SD-WAN domains. Key capabilities include automated event correlation, root cause identification, Self-Driving Network operations, network assurance, and proactive anomaly detection.

Additionally available are

- **Marvis AI Assistant**, the first virtual network assistant purpose-built with HPE Mist AI for enterprise WLANs, LANs, and WANs. It fundamentally transforms network operations from reactive troubleshooting to proactive remediation through self-driving actions.
- **Juniper Access Assurance** cloud service delivers zero trust, identity-based network access control in a flexible yet simple policy framework for onboarding guest, IoT, BYOD, and corporate devices.
- **Juniper Premium Analytics**, **Juniper User Engagement**, **Juniper Asset Visibility**, and **IoT Assurance**

Routers



* Product configuration and appearance may vary

Juniper MX Series Universal Routing Platforms: The HPE portfolio of high-performance, software-centric physical and virtual routers delivers all of the performance, features, and functionality school district applications need, including private WAN for multisite connectivity through a private backbone; data center interconnect for connecting multiple data centers for disaster recovery; geo clustering and virtualization; and internet edge to act as the school district's internet gateway.

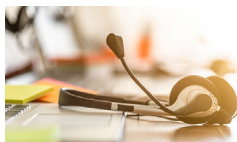
Security







* Product configuration and appearance may vary

Juniper SRX Series Firewalls: SRX Series Firewalls¹ are rightsized for multiple district applications. These next-generation firewalls¹ reduce risk of attack and safeguard users, applications, and devices through identity-based policies, microsegmentation, VPN connectivity, and validated threat prevention. SRX Series Firewalls also help districts achieve compliance certification for the Children's Internet Protection Act (CIPA) and the Family Educational Rights and Privacy Act (FERPA).

Maintenance



Juniper Care Services: This comprehensive and flexible portfolio of support services delivers mission-critical support for HPE hardware and software products around the clock, 365 days a year. Tailored offerings help keep your network running reliably, reduce network risk, decrease operational costs, and protect network investment.

<p>"Wired Assurance and Wi-Fi Assurance are compelling. Having wired and wireless all in one dashboard makes it easier for our support technicians because they have a single place to find and troubleshoot a problem..."</p>  <p>Ashland School District <i>inspiring learning for life</i></p> <p>- Steve Mitzel, Director of IT</p>	<p>"We chose Mist because of the visibility into the user experience. Before Mist, our network engineers were always chasing ghosts in the wireless. Now, Mist provides visibility so we can see what the issue is. Mist is tremendous for troubleshooting."</p>  <p>COPPELL INDEPENDENT SCHOOL DISTRICT <i>Empowering Educational Excellence</i></p> <p>- Stephen McGilvray, Executive Director of Technology</p>
<p>"Wireless needs to be like the lights, always on and always perfect. That's how our Mist Wi-Fi is. The Marvis Actions dashboard has even diagnosed issues for us with our LAN where a VLAN tag configuration was missing from one of our core switches. We are excited about how AI is transforming our IT operations and student experiences."</p>  <p>Wadsworth City Schools</p> <p>- Phil Luthman, Director of Technology</p>	<p>"It used to take hours or days tracing data and doing manual packet captures to fix wireless issues. Now solving client issues takes just minutes with Mist. In addition, with a single glance I can see exactly what level of service we are delivering to every student, teacher, administrator, and guest. We really value this new level of visibility into the user experience."</p>  <p>NORTH CANTON CITY SCHOOLS</p> <p>- John Fano, System Admin at NCCS</p>

¹Firewall services and firewall components are E-Rate eligible. Security services beyond basic stateful firewall such as UTM, intrusion prevention system (IPS), application security, and advanced threat prevention (ATP) are not considered E-Rate eligible.

Simplify your E-Rate project

Several special E-Rate offerings from HPE are now available to applicants to build their E-Rate network infrastructure project. These special offerings represent many of the most popular solutions adopted by K-12 customers. All these offers are E-Rate eligible with the wired and wireless offerings summarized below with the exception where the offerings tabulated on Tables 2, 3, and 4, which include Marvis AI Assistant. These offerings are partially, but mostly, eligible. E-Rate eligibility factors for these SKUs can be obtained from the HPE Juniper Networking Products and Services E-Rate Eligibility guide hpe.net/content/dam/www/assets/faqs/us/en/products-and-services-e-rate-eligibility.pdf.

Offering	E-Rate product type	See table
EX Series Ethernet Switches with 3-Year Next-Day Support	Switch	1
Juniper EX Wired Assurance/VNA Switch Bundles	Switch	2
Juniper EX E-Rate Flex Term	Licenses	3
HPE Juniper Networking Juniper access point E-Rate Bundles	Access Point	4

EX Series Ethernet Switches with 3-Year Next-Day Support

Table 1 provides a list of available EX Series Ethernet Switches bundles that when ordered includes the EX-Switch base system with three-years of next-day support services.

Table 1. EX Series Ethernet Switches with 3-Year Next-Day Support Services

Family	Part number	Description
	B-EX2300-24P-EDU	EX2300-24P eRate Bundle with 3YR Next Day Support Services
	B-EX2300-24T-EDU	EX2300-24T eRate Bundle with 3YR Next Day Support Service
	B-EX2300-48P-EDU	EX2300-48P eRate Bundle with 3YR Next Day Support Services
	B-EX2300-48PV-EDU	EX2300-48P-VC eRate Bundle with 3YR Next Day Support Services
EX2300 Ethernet Switchest	B-EX2300-48T-EDU	EX2300-48T eRate Bundle with 3YR Next Day Support Services
	B-EX2300-C12P-EDU	EX2300-C-12P eRate Bundle with 3YR Next Day Support Services
	B-EX2300-C12PV-EDU	EX2300-C-12P-VC eRate Bundle with 3YR Next Day Support Services
	B-EX2300-C12T-EDU	EX2300-C-12T eRate Bundle with 3YR Next Day Support Services
	B-EX2300-24MP-EDU	EX2300-24MP eRate Bundle with 3YR Next Day Support Services
	B-EX2300-48MP-EDU	EX2300-48MP eRate Bundle with 3YR Next Day Support Services
	B-EX3400-24P-EDU	EX3400-24P eRate Bundle with 3YR Next Day Support Services
EX3400 Ethernet Switches	B-EX3400-24T-EDU	EX3400-24T eRate Bundle with 3YR Next Day Support Services
	B-EX3400-48P-EDU	EX3400-48P eRate Bundle with 3YR Next Day Support Services
	B-EX3400-48P-EDU	EX3400-48P eRate Bundle with 3YR Next Day Support Services

Table 1. EX Series Ethernet Switches with 3-Year Next-Day Support Services (continued)

Family	Part number	Description
EX4100 Ethernet Switches	B-EX4100-24MP-EDU	EX4100-24MP eRate Bundle with 3YR Next Day Support Services
	B-EX4100-24P-EDU	EX4100-24P eRate Bundle with 3YR Next Day Support Services
	B-EX4100-24T-D-EDU	EX4100-24T-DC eRate Bundle with 3YR Next Day Support Services
	B-EX4100-24T-EDU	EX4100-24T eRate Bundle with 3YR Next Day Support Services
	B-EX4100-48MP-EDU	EX4100-48MP eRate Bundle with 3YR Next Day Support Services
	B-EX4100-48P-EDU	EX4100-48P eRate Bundle with 3YR Next Day Support Services
	B-EX4100-48T-A-EDU	EX4100-48T-AFI eRate Bundle with 3YR Next Day Support Services
	B-EX4100-48T-D-EDU	EX4100-48T-DC eRate Bundle with 3YR Next Day Support Services
	B-EX4100-48T-EDU	EX4100-48T eRate Bundle with 3YR Next Day Support Services
	B-EX4100-F-12P-EDU	EX4100-F-12P eRate Bundle with 3YR Next Day Support Services
	B-EX4100-F-12T-EDU	EX4100-F-12T eRate Bundle with 3YR Next Day Support Services
	B-EX4100-F-24P-EDU	EX4100-F-24P eRate Bundle with 3YR Next Day Support Services
	B-EX4100-F-24T-EDU	EX4100-F-24T eRate Bundle with 3YR Next Day Support Services
	B-EX4100-F-48P-EDU	EX4100-F-48P eRate Bundle with 3YR Next Day Support Services
B-EX4100-F-48T-EDU	EX4100-F-48T eRate Bundle with 3YR Next Day Support Services	
EX4300 Ethernet Switches	B-EX4300-32F-EDU	EX4300-32F eRate Bundle with 3YR Next Day Support Services
	B-EX4300-48MP-EDU	EX4300-48MP eRate Bundle with 3 Year Next Day Support Services
EX4400 Ethernet Switches	B-EX440024MP-EDU	EX4400-24MP eRate Bundle with 3YR Next Day Support Services
	B-EX440024P-EDU	EX4400-24P eRate Bundle with 3YR Next Day Support Services
	B-EX440024T-EDU	EX4400-24T eRate Bundle with 3YR Next Day Support Services
	B-EX440024TA-EDU	EX4400-24T-AFI eRate Bundle with 3YR Next Day Support Services
	B-EX440024TD-EDU	EX4400-24T-DC eRate Bundle with 3YR Next Day Support Services
	B-EX4424TDA-EDU	EX4400-24T-DC-AFI eRate Bundle with 3YR Next Day Support Services
	B-EX440024X-EDU	EX4400-24X ERATE BUNDLE WITH 3YR ND
	B-EX440024XA-EDU	EX4400-24X-AFI ERATE BUNDLE WITH 3YR ND
	B-EX440024XD-EDU	EX4400-24X-DC ERATE BUNDLE WITH 3YR ND
	B-EX440024XDA-EDU	EX4400-24X-DC-AFI ERATE BUNDLE WITH 3YR ND
	B-EX440048F-EDU	EX4400-48F eRate Bundle with 3YR Next Day Support Services
	B-EX440048FA-EDU	EX4400-48F-AFI eRate Bundle with 3YR Next Day Support Services
	B-EX440048FD-EDU	EX4400-48F-DC eRate Bundle with 3YR Next Day Support Services

Table 1. EX Series Ethernet Switches with 3-Year Next-Day Support Services (continued)

Family	Part number	Description
	B-EX4448FDA-EDU	EX4400-48F-DC-AFI eRate Bundle with 3YR Next Day Support Services
	B-EX440048MP-EDU	EX4400-48MP eRate Bundle with 3YR Next Day Support Services
	B-EX440048P-EDU	EX4400-48P eRate Bundle with 3YR Next Day Support Services
	B-EX440048T-EDU	EX4400-48T eRate Bundle with 3YR Next Day Support Services
	B-EX440048TA-EDU	EX4400-48T-AFI eRate Bundle with 3YR Next Day Support Services
	B-EX440048TD-EDU	EX4400-48T-DC eRate Bundle with 3YR Next Day Support Services
	B-EX4448TDA-EDU	EX4400-48T-DC-AFI eRate Bundle with 3YR Next Day Support Services
EX4600 Ethernet Switches	B-EX4600-40FI-EDU	EX4600-40F-AFI E-Rate Bundle with 3-Year Next-Day Support Services
	B-EX4600-40FO-EDU	EX4600-40F-AFO E-Rate Bundle with 3-Year Next-Day Support Services
	B-EX465048AI-EDU	EX4650-48Y-AFI E-Rate Bundle with 3-Year Next Day Support Services
EX4650 Ethernet Switches	B-EX4650AO-EDU	EX4650-48Y-AFO E-Rate Bundle with 3-Year Next Day Support Services
	B-EX4650DAI-EDU	EX4650-48Y-DC-AFI E-Rate Bundle with 3-Year Next Day Support Services
	B-EX4650DAO-EDU	EX4650-48Y-DC-AFO E-Rate Bundle with 3-Year Next Day Support Services

Table 1 notes: For the switches listed in Table 1, to continue the same support level after year three, Juniper Care Next-Day Delivery Service is available for purchase which is partially E-Rate eligible under Category 2 Basic Maintenance of Internal Connections (BMIC). Alternately, Juniper Care Core is available, which is 100% E-Rate eligible under BMIC. Enhanced Limited Lifetime Warranty (ELLW) terms are detailed at www.hpe.net/support/warranty/990240.pdf.

Juniper EX Wired Assurance/VNA Switch bundles

Table 2 provides a list of available part numbers for the EX-Series Wired Assurance/VNA Switches. When ordered, these switch bundles provides a corresponding EX Series Ethernet base switch hardware, support, and Wired Assurance and Marvis AI Assistant HPE Mist cloud service subscription. They are available in three- or five-year terms.

Table 2. EX Series Wired Assurance/VNA Switches, three- and five-year terms

Family	Three-year term		Five-year term	
	Part number	Description	Part number	Description
EX2300 Ethernet Switches	B-EX230024MP-3M2-E	EX230024MP ERATE MIST 2S LIC & SUP 3YR	B-EX230024MP-5M2-E	EX230024MP ERATE MIST 2S LIC & SUP 5YR
	B-EX230024P-3M2-E	EX230024P ERATE MIST 2S LIC & SUP 3YR	B-EX230024P-5M2-E	EX230024P ERATE MIST 2S LIC & SUP 5YR
	B-EX230024T-3M2-E	EX230024T ERATE MIST 2S LIC & SUP 3YR	B-EX230024T-5M2-E	EX230024T ERATE MIST 2S LIC & SUP 5YR
	B-EX230048MP-3M2-E	EX230048MP ERATE MIST 2S LIC & SUP 3YR	B-EX230048MP-5M2-E	EX230048MP ERATE MIST 2S LIC & SUP 5YR
	B-EX230048P-3M2-E	EX230048P ERATE MIST 2S LIC & SUP 3YR	B-EX230048P-5M2-E	EX230048P ERATE MIST 2S LIC & SUP 5YR
	B-EX230048T-3M2-E	EX230048T ERATE MIST 2S LIC & SUP 3YR	B-EX230048T-5M2-E	EX230048T ERATE MIST 2S LIC & SUP 5YR
	B-EX2300C12P-3M2-E	EX2300C12P ERATE MIST 2S LIC & SUP 3YR	B-EX2300C12P-5M2-E	EX2300C12P ERATE MIST 2S LIC & SUP 5YR
	B-EX2300C12T-3M2-E	EX2300C12T ERATE MIST 2S LIC & SUP 3YR	B-EX2300C12T-5M2-E	EX2300C12T ERATE MIST 2S LIC & SUP 5YR
EX3400 Ethernet Switches	B-EX340024P-3M2-E	EX340024P ERATE MIST 2S LIC & SUP 3YR	B-EX340024P-5M2-E	EX340024P ERATE MIST 2S LIC & SUP 5YR
	B-EX340024T-3M2-E	EX340024T ERATE MIST 2S LIC & SUP 3YR	B-EX340024T-5M2-E	EX340024T ERATE MIST 2S LIC & SUP 5YR
	B-EX340048P-3M2-E	EX340048P ERATE MIST 2S LIC & SUP 3YR	B-EX340048P-5M2-E	EX340048P ERATE MIST 2S LIC & SUP 5YR
	B-EX340048T-3M2-E	EX340048T ERATE MIST 2S LIC & SUP 3YR	B-EX340048T-5M2-E	EX340048T ERATE MIST 2S LIC & SUP 5YR
EX4300 Ethernet Switches	B-EX430032F-3M2-E	EX430032F ERATE MIST 2S LIC & SUP 3YR	B-EX430032F-5M2-E	EX430032F ERATE MIST 2S LIC & SUP 5YR
	B-EX430048MP-3M2-E	EX430048MP ERATE MIST 2S LIC & SUP 3YR	B-EX430048MP-5M2-E	EX430048MP ERATE MIST 2S LIC & SUP 5YR
EX4400 Ethernet Switches	B-EX440024MP-3M2	EX440024MP ERATE MIST 2S LIC & SUP 3YR	B-EX440024MP-5M2	EX440024MP ERATE MIST 2S LIC & SUP 5YR
	B-EX440024P-3M2-E	EX440024P ERATE MIST 2S LIC & SUP 3YR	B-EX440024P-5M2-E	EX440024P ERATE MIST 2S LIC & SUP 5YR
	B-EX440024T-3M2-E	EX440024T ERATE MIST 2S LIC & SUP 3YR	B-EX440024T-5M2-E	EX440024T ERATE MIST 2S LIC & SUP 5YR

Table 2. EX Series Wired Assurance/VNA Switches, three- and five-year terms (continued)

Family	Three-year term		Five-year term	
	Part number	Description	Part number	Description
EX4400 Ethernet Switches	B-EX440024TA-3M2-E	EX440024TA ERATE MIST 2S LIC & SUP 3YR	B-EX440024TA-5M2-E	EX440024TA ERATE MIST 2S LIC & SUP 5YR
	B-EX440024TD-3M2-E	EX440024TD ERATE MIST 2S LIC & SUP 3YR	B-EX440024TD-5M2-E	EX440024TD ERATE MIST 2S LIC & SUP 5YR
	B-EX4424TDA-3M2-E	EX440024TDA ERATE MIST 2S LIC & SUP 3YR	B-EX4424TDA-5M2-E	EX440024TDA ERATE MIST 2S LIC & SUP 5YR
	B-EX440048F-3M2-E	EX440048F ERATE MIST 2S LIC & SUP 3YR	B-EX440048F-5M2-E	EX440048F ERATE MIST 2S LIC & SUP 5YR
	B-EX440048FA-3M2-E	EX440048FA ERATE MIST 2S LIC & SUP 3YR	B-EX440048FA-5M2-E	EX440048FA ERATE MIST 2S LIC & SUP 5YR
	B-EX440048FD-3M2-E	EX440048FD ERATE MIST 2S LIC & SUP 3YR	B-EX440048FD-5M2-E	EX440048FD ERATE MIST 2S LIC & SUP 5YR
	B-EX4448FDA-3M2-E	EX440048FDA ERATE MIST 2S LIC & SUP 3YR	B-EX4448FDA-5M2-E	EX440048FDA ERATE MIST 2S LIC & SUP 5YR
	B-EX440048MP-3M2	EX440048MP ERATE MIST 2S LIC & SUP 3YR	B-EX440048MP-5M2	EX440048MP ERATE MIST 2S LIC & SUP 5YR
	B-EX440048P-3M2-E	EX440048P ERATE MIST 2S LIC & SUP 3YR	B-EX440048P-5M2-E	EX440048P ERATE MIST 2S LIC & SUP 5YR
	B-EX440048T-3M2-E	EX440048T ERATE MIST 2S LIC & SUP 3YR	B-EX440048T-5M2-E	EX440048T ERATE MIST 2S LIC & SUP 5YR
	B-EX440048TA-3M2-E	EX440048TA ERATE MIST 2S LIC & SUP 3YR	B-EX440048TA-5M2-E	EX440048TA ERATE MIST 2S LIC & SUP 5YR
	B-EX440048TD-3M2-E	EX440048TD ERATE MIST 2S LIC & SUP 3YR	B-EX440048TD-5M2-E	EX440048TD ERATE MIST 2S LIC & SUP 5YR
B-EX4448TDA-3M2-E	EX440048TDA ERATE MIST 2S LIC & SUP 3YR	B-EX4448TDA-5M2-E	EX440048TDA ERATE MIST 2S LIC & SUP 5YR	
EX4600 Ethernet Switches	B-EX460040FI-3M2-E	EX460040FAFI ERATE MIST 2S LIC & SUP 3YR	B-EX460040FI-5M2-E	EX460040FAFI ERATE MIST 2S LIC & SUP 5YR
	B-EX460040FO-3M2-E	EX460040FAFO ERATE MIST 2S LIC & SUP 3YR	B-EX460040FO-5M2-E	EX460040FAFO ERATE MIST 2S LIC & SUP 5YR
EX4650 Ethernet Switches	B-EX465048AI-3M2-E	EX465048AI ERATE MIST 2S LIC & SUP 3YR	B-EX465048AI-5M2-E	EX465048AI ERATE MIST 2S LIC & SUP 5YR
	B-EX4650AO-3M2-E	EX4650AO ERATE MIST 2S LIC & SUP 3YR	B-EX4650AO-5M2-E	EX4650AO ERATE MIST 2S LIC & SUP 5YR
	B-EX4650DAI-3M2-E	EX4650DAI ERATE MIST 2S LIC & SUP 3YR	B-EX4650DAI-5M2-E	EX4650DAI ERATE MIST 2S LIC & SUP 5YR
	B-EX4650DAO-3M2-E	EX4650DAO ERATE MIST 2S LIC & SUP 3YR	B-EX4650DAO-5M2-E	EX4650DAO ERATE MIST 2S LIC & SUP 5YR

Juniper EX E-Rate Flex Term Licenses

Table 3 provides a list of available Juniper EX E-Rate Flex Term Licenses. They provide a common, simple, and flexible licensing model for separately ordered EX Series switches, enabling the selection of features based on the needs of the applicant's network. When ordered for a corresponding Juniper EX switch base system hardware, Juniper EX E-Rate Flex Term Licenses includes the combination of the following 3 capabilities:

1. Standard, Advanced, or Premium tiered Junos OS features.
2. A single HPE Mist Service (Wired Assurance) or two HPE Mist Services (Wired Assurance + Marvis AI Assistant (VNA)) options.
3. CORE, Next Day or Same Day support options.

These switch licenses are offered as a one-, three-, five-, or seven-year term and are switch class based, determined by the number of access ports on the switch. Class 1 (C1) switches have 12 ports, Class 2 (C2) switches have 24 Ports, and Class 3 (C3) switches have 32 or 48 Ports. Seven-year term licenses are only applicable to EX4100, EX4400, and EX4650 Series switches.

Table 3. Juniper EX E-Rate Flex Term Licenses

EX SW Standard + Wired Assurance				Applicable EX switch product lines
1 Year	3 Year	5 Year	7 Year*	1, 3, and 5 Year EX Flex Term Licenses applicable to the following EX switch product lines. 7 Year EX Flex Term Licenses only applicable to EX4100, EX4400, and EX4650 product lines
CORE Service				
S-EX-S-C1-1M1-C-E	S-EX-S-C1-3M1-C-E	S-EX-S-C1-5M1-C-E	S-EX-S-C1-7M1-C-E	12-port EX2300, EX4100
S-EX-S-C2-1M1-C-E	S-EX-S-C2-3M1-C-E	S-EX-S-C2-5M1-C-E	S-EX-S-C2-7M1-C-E	24-port EX2300, EX3400, EX4100, EX4300, EX4400
S-EX-S-C3-1M1-C-E	S-EX-S-C3-3M1-C-E	S-EX-S-C3-5M1-C-E	S-EX-S-C3-7M1-C-E	EX4300-32F, 48-port EX2300, EX3400, EX4100, EX4300, EX4400
S-EX-S-C3-1M146C-E	S-EX-S-C3-3M146C-E	S-EX-S-C3-5M146C-E	S-EX-S-C3-7M146C-E	EX4600, EX4650
Next Day Service				
S-EX-S-C1-1M1-N-E	S-EX-S-C1-3M1-N-E	S-EX-S-C1-5M1-N-E	S-EX-S-C1-7M1-N-E	12-port EX2300, EX4100
S-EX-S-C2-1M1-N-E	S-EX-S-C2-3M1-N-E	S-EX-S-C2-5M1-N-E	S-EX-S-C2-7M1-N-E	24-port EX2300, EX3400, EX4100, EX4300, EX4400
S-EX-S-C3-1M1-N-E	S-EX-S-C3-3M1-N-E	S-EX-S-C3-5M1-N-E	S-EX-S-C3-7M1-N-E	EX4300-32F, 48-port EX2300, EX3400, EX4100, EX4300, EX4400
S-EX-S-C3-1M146N-E	S-EX-S-C3-3M146N-E	S-EX-S-C3-5M146N-E	S-EX-S-C3-7M146N-E	EX4600, EX4650
Same Day Service				
S-EX-S-C1-1M1-S-E	S-EX-S-C1-3M1-S-E	S-EX-S-C1-5M1-S-E	S-EX-S-C1-7M1-S-E	12-port EX2300, EX4100
S-EX-S-C2-1M1-S-E	S-EX-S-C2-3M1-S-E	S-EX-S-C2-5M1-S-E	S-EX-S-C2-7M1-S-E	24-port EX2300, EX3400, EX4100, EX4300, EX4400

Table 3. Juniper EX E-Rate Flex Term Licenses (continued)

EX SW Standard + Wired Assurance				Applicable EX switch product lines
S-EX-S-C3-1M1-S-E	S-EX-S-C3-3M1-S-E	S-EX-S-C3-5M1-S-E	S-EX-S-C3-7M1-S-E	EX4300-32F, 48-port EX2300. EX3400, EX4100, EX4300, EX4400
S-EX-S-C3-1M146S-E	S-EX-S-C3-3M146S-E	S-EX-S-C3-5M146S-E	S-EX-S-C3-7M146S-E	EX4600, EX4650

EX SW Standard + Wired Assurance + VNA				Applicable EX switch product lines
1 Year	3 Year	5 Year	7 Year*	1, 3, and 5 Year EX Flex Term Licenses applicable to the following EX switch product lines. 7 Year EX Flex Term Licenses only applicable to EX4100, EX4400, and EX4650 product lines
CORE Service				
S-EX-S-C1-1M2-C-E	S-EX-S-C1-3M2-C-E	S-EX-S-C1-5M2-C-E	S-EX-S-C1-7M2-C-E	12-port EX2300, EX4100
S-EX-S-C2-1M2-C-E	S-EX-S-C2-3M2-C-E	S-EX-S-C2-5M2-C-E	S-EX-S-C2-7M2-C-E	24-port EX2300, EX3400, EX4100, EX4300, EX4400
S-EX-S-C3-1M2-C-E	S-EX-S-C3-3M2-C-E	S-EX-S-C3-5M2-C-E	S-EX-S-C3-7M2-C-E	EX4300-32F, 48-port EX2300. EX3400, EX4100, EX4300, EX4400
S-EX-S-C3-1M246C-E	S-EX-S-C3-3M246C-E	S-EX-S-C3-5M246C-E	S-EX-S-C3-7M246C-E	EX4600, EX4650
Next Day Service				
S-EX-S-C1-1M2-N-E	S-EX-S-C1-3M2-N-E	S-EX-S-C1-5M2-N-E	S-EX-S-C1-7M2-N-E	12-port EX2300, EX4100
S-EX-S-C2-1M2-N-E	S-EX-S-C2-3M2-N-E	S-EX-S-C2-5M2-N-E	S-EX-S-C2-7M2-N-E	24-port EX2300, EX3400, EX4100, EX4300, EX4400
S-EX-S-C3-1M2-N-E	S-EX-S-C3-3M2-N-E	S-EX-S-C3-5M2-N-E	S-EX-S-C3-7M2-N-E	EX4300-32F, 48-port EX2300. EX3400, EX4100, EX4300, EX4400
S-EX-S-C3-1M246N-E	S-EX-S-C3-3M246N-E	S-EX-S-C3-5M246N-E	S-EX-S-C3-7M246N-E	EX4600, EX4650
Same Day Service				
S-EX-S-C1-1M2-S-E	S-EX-S-C1-3M2-S-E	S-EX-S-C1-5M2-S-E	S-EX-S-C1-7M2-S-E	12-port EX2300, EX4100
S-EX-S-C2-1M2-S-E	S-EX-S-C2-3M2-S-E	S-EX-S-C2-5M2-S-E	S-EX-S-C2-7M2-S-E	24-port EX2300, EX3400, EX4100, EX4300, EX4400
S-EX-S-C3-1M2-S-E	S-EX-S-C3-3M2-S-E	S-EX-S-C3-5M2-S-E	S-EX-S-C3-7M2-S-E	EX4300-32F, 48-port EX2300. EX3400, EX4100, EX4300, EX4400
S-EX-S-C3-1M246S-E	S-EX-S-C3-3M246S-E	S-EX-S-C3-5M246S-E	S-EX-S-C3-7M246S-E	EX4600, EX4650

Table 3. Juniper EX E-Rate Flex Term Licenses (continued)

EX SW Advanced + Wired Assurance				Applicable EX switch product lines
1 Year	3 Year	5 Year	7 Year*	1, 3, and 5 Year EX Flex Term Licenses applicable to the following EX switch product lines. 7 Year EX Flex Term Licenses only applicable to EX4100, EX4400, and EX4650 product lines
CORE Service				
S-EX-A-C1-1M1-C-E	S-EX-A-C1-3M1-C-E	S-EX-A-C1-5M1-C-E	S-EX-A-C1-7M1-C-E	12-port EX2300, EX4100
S-EX-A-C2-1M1-C-E	S-EX-A-C2-3M1-C-E	S-EX-A-C2-5M1-C-E	S-EX-A-C2-7M1-C-E	24-port EX2300, EX3400, EX4100, EX4300, EX4400
S-EX-A-C3-1M1-C-E	S-EX-A-C3-3M1-C-E	S-EX-A-C3-5M1-C-E	S-EX-A-C3-7M1-C-E	EX4300-32F, 48-port EX2300. EX3400, EX4100, EX4300, EX4400
Next Day Service				
S-EX-A-C1-1M1-N-E	S-EX-A-C1-3M1-N-E	S-EX-A-C1-5M1-N-E	S-EX-A-C1-7M1-N-E	12-port EX2300, EX4100
S-EX-A-C2-1M1-N-E	S-EX-A-C2-3M1-N-E	S-EX-A-C2-5M1-N-E	S-EX-A-C2-7M1-N-E	24-port EX2300, EX3400, EX4100, EX4300, EX4400
S-EX-A-C3-1M1-N-E	S-EX-A-C3-3M1-N-E	S-EX-A-C3-5M1-N-E	S-EX-A-C3-7M1-N-E	EX4300-32F, 48-port EX2300. EX3400, EX4100, EX4300, EX4400
Same Day Service				
S-EX-A-C1-1M1-S-E	S-EX-A-C1-3M1-S-E	S-EX-A-C1-5M1-S-E	S-EX-A-C1-7M1-S-E	12-port EX2300, EX4100
S-EX-A-C2-1M1-S-E	S-EX-A-C2-3M1-S-E	S-EX-A-C2-5M1-S-E	S-EX-A-C2-7M1-S-E	24-port EX2300, EX3400, EX4100, EX4300, EX4400
S-EX-A-C3-1M1-S-E	S-EX-A-C3-3M1-S-E	S-EX-A-C3-5M1-S-E	S-EX-A-C3-7M1-S-E	EX4300-32F, 48-port EX2300. EX3400, EX4100, EX4300, EX4400
EX SW Advanced + Wired Assurance + VNA				Applicable EX switch product lines
1 Year	3 Year	5 Year	7 Year*	1, 3, and 5 Year EX Flex Term Licenses applicable to the following EX switch product lines. 7 Year EX Flex Term Licenses only applicable to EX4100, EX4400, and EX4650 product lines
CORE Service				
S-EX-A-C1-1M2-C-E	S-EX-A-C1-3M2-C-E	S-EX-A-C1-5M2-C-E	S-EX-A-C1-7M2-C-E	12-port EX2300, EX4100
S-EX-A-C2-1M2-C-E	S-EX-A-C2-3M2-C-E	S-EX-A-C2-5M2-C-E	S-EX-A-C2-7M2-C-E	24-port EX2300, EX3400, EX4100, EX4300, EX4400
S-EX-A-C3-1M2-C-E	S-EX-A-C3-3M2-C-E	S-EX-A-C3-5M2-C-E	S-EX-A-C3-7M2-C-E	EX4300-32F, 48-port EX2300. EX3400, EX4100, EX4300, EX4400

Table 3. Juniper EX E-Rate Flex Term Licenses (continued)

EX SW Advanced + Wired Assurance + VNA				Applicable EX switch product lines
Next Day Service				
S-EX-A-C1-1M2-N-E	S-EX-A-C1-3M2-N-E	S-EX-A-C1-5M2-N-E	S-EX-A-C1-7M2-N-E	12-port EX2300, EX4100
S-EX-A-C2-1M2-N-E	S-EX-A-C2-3M2-N-E	S-EX-A-C2-5M2-N-E	S-EX-A-C2-7M2-N-E	24-port EX2300, EX3400, EX4100, EX4300, EX4400
S-EX-A-C3-1M2-N-E	S-EX-A-C3-3M2-N-E	S-EX-A-C3-5M2-N-E	S-EX-A-C3-7M2-N-E	EX4300-32F, 48-port EX2300. EX3400, EX4100, EX4300, EX4400
Same Day Service				
S-EX-A-C1-1M2-S-E	S-EX-A-C1-3M2-S-E	S-EX-A-C1-5M2-S-E	S-EX-A-C1-7M2-S-E	12-port EX2300, EX4100
S-EX-A-C2-1M2-S-E	S-EX-A-C2-3M2-S-E	S-EX-A-C2-5M2-S-E	S-EX-A-C2-7M2-S-E	24-port EX2300, EX3400, EX4100, EX4300, EX4400
S-EX-A-C3-1M2-S-E	S-EX-A-C3-3M2-S-E	S-EX-A-C3-5M2-S-E	S-EX-A-C3-7M2-S-E	EX4300-32F, 48-port EX2300. EX3400, EX4100, EX4300, EX4400
EX SW Premium + Wired Assurance				Applicable EX switch product lines
1 Year	3 Year	5 Year	7 Year*	1, 3, and 5 Year EX Flex Term Licenses applicable to the following EX switch product lines. 7 Year EX Flex Term Licenses only applicable to EX4100, EX4400, and EX4650 product lines
CORE Service				
S-EX-P-C1-1M1-C-E	S-EX-P-C1-3M1-C-E	S-EX-P-C1-5M1-C-E	S-EX-P-C1-7M1-C-E	12-Port EX4100
S-EX-P-C2-1M1-C-E	S-EX-P-C2-3M1-C-E	S-EX-P-C2-5M1-C-E	S-EX-P-C2-7M1-C-E	24-port EX2300, EX3400, EX4100, EX4300, EX4400
S-EX-P-C3-1M1-C-E	S-EX-P-C3-3M1-C-E	S-EX-P-C3-5M1-C-E	S-EX-P-C3-7M1-C-E	EX4300-32F, 48-port EX2300. EX3400, EX4100, EX4300, EX4400
Next Day Service				
S-EX-P-C1-1M1-N-E	S-EX-P-C1-3M1-N-E	S-EX-P-C1-5M1-N-E	S-EX-P-C1-7M1-N-E	12-Port EX4100
S-EX-P-C2-1M1-N-E	S-EX-P-C2-3M1-N-E	S-EX-P-C2-5M1-N-E	S-EX-P-C2-7M1-N-E	24-port EX2300, EX3400, EX4100, EX4300, EX4400
S-EX-P-C3-1M1-N-E	S-EX-P-C3-3M1-N-E	S-EX-P-C3-5M1-N-E	S-EX-P-C3-7M1-N-E	EX4300-32F, 48-port EX2300. EX3400, EX4100, EX4300, EX4400
Same Day Service				
S-EX-P-C1-1M1-S-E	S-EX-P-C1-3M1-S-E	S-EX-P-C1-5M1-S-E	S-EX-P-C1-7M1-S-E	12-Port EX4100
S-EX-P-C2-1M1-S-E	S-EX-P-C2-3M1-S-E	S-EX-P-C2-5M1-S-E	S-EX-P-C2-7M1-S-E	24-port EX2300, EX3400, EX4100, EX4300, EX4400
S-EX-P-C3-1M1-S-E	S-EX-P-C3-3M1-S-E	S-EX-P-C3-5M1-S-E	S-EX-P-C3-7M1-S-E	EX4300-32F, 48-port EX2300. EX3400, EX4100, EX4300, EX4400

Table 3. Juniper EX E-Rate Flex Term Licenses (continued)

EX SW Premium + Wired Assurance + VNA				Applicable EX switch product lines
1 Year	3 Year	5 Year	7 Year*	1, 3, and 5 Year EX Flex Term Licenses applicable to the following EX switch product lines. 7 Year EX Flex Term Licenses only applicable to EX4100, EX4400, and EX4650 product lines
CORE Service				
S-EX-P-C1-1M2-C-E	S-EX-P-C1-3M2-C-E	S-EX-P-C1-5M2-C-E	S-EX-P-C1-7M2-C-E	12-Port EX4100
S-EX-P-C2-1M2-C-E	S-EX-P-C2-3M2-C-E	S-EX-P-C2-5M2-C-E	S-EX-P-C2-7M2-C-E	24-port EX2300, EX3400, EX4100, EX4300, EX4400
S-EX-P-C3-1M2-C-E	S-EX-P-C3-3M2-C-E	S-EX-P-C3-5M2-C-E	S-EX-P-C3-7M2-C-E	EX4300-32F, 48-port EX2300. EX3400, EX4100, EX4300, EX4400
Next Day Service				
S-EX-P-C1-1M2-N-E	S-EX-P-C1-3M2-N-E	S-EX-P-C1-5M2-N-E	S-EX-P-C1-7M2-N-E	12-Port EX4100
S-EX-P-C2-1M2-N-E	S-EX-P-C2-3M2-N-E	S-EX-P-C2-5M2-N-E	S-EX-P-C2-7M2-N-E	24-port EX2300, EX3400, EX4100, EX4300, EX4400
S-EX-P-C3-1M2-N-E	S-EX-P-C3-3M2-N-E	S-EX-P-C3-5M2-N-E	S-EX-P-C3-7M2-N-E	EX4300-32F, 48-port EX2300. EX3400, EX4100, EX4300, EX4400
Same Day Service				
S-EX-P-C1-1M2-S-E	S-EX-P-C1-3M2-S-E	S-EX-P-C1-5M2-S-E	S-EX-P-C1-7M2-S-E	12-Port EX4100
S-EX-P-C2-1M2-S-E	S-EX-P-C2-3M2-S-E	S-EX-P-C2-5M2-S-E	S-EX-P-C2-7M2-S-E	24-port EX2300, EX3400, EX4100, EX4300, EX4400
S-EX-P-C3-1M2-S-E	S-EX-P-C3-3M2-S-E	S-EX-P-C3-5M2-S-E	S-EX-P-C3-7M2-S-E	EX4300-32F, 48-port EX2300. EX3400, EX4100, EX4300, EX4400

HPE Networking HPE access point E-Rate Bundles

Table 4 provides a list of available HPE Networking HPE access point E-Rate bundles. When ordered, these bundles include the access point hardware, support and 1 or 2 HPE Mist cloud subscription (Wi-Fi Assurance, Marvis AI Assistant) available in a one-, three-, or five-year license term.

Table 4. HPE Networking access point E-Rate bundles

Family	1 HPE Mist Service: Wi-Fi Assurance		2 HPE Mist Services: Wi-Fi Assurance and Marvis AI Assistant	
	Part number	Description	Part number	Description
AP12	B-AP12-1S-1Y-E	Erate,MIST AP12 AP BUNDLE,1Y 1SVC SUB	B-AP12-2S-1Y-E	Erate,MIST AP12 AP BUNDLE,1Y 2SVC SUB
	B-AP12-1S-3Y-E	Erate,MIST AP12 AP BUNDLE,3Y 1SVC SUB	B-AP12-2S-3Y-E	Erate,MIST AP12 AP BUNDLE,3Y 2SVC SUB
	B-AP12-1S-5Y-E	Erate,MIST AP12 AP BUNDLE,5Y 1SVC SUB	B-AP12-2S-5Y-E	Erate,MIST AP12 AP BUNDLE,5Y 2SVC SUB
AP24	B-AP24-1S-1Y-E	Erate,MIST AP24 AP BUNDLE, 1Y 1SVC SUB	B-AP24-2S-1Y-E	Erate,MIST AP24 AP BUNDLE, 1Y 2SVC SUB
	B-AP24-1S-3Y-E	Erate,MIST AP24 AP BUNDLE, 3Y 1SVC SUB	B-AP24-2S-3Y-E	Erate,MIST AP24 AP BUNDLE, 3Y 2SVC SUB
	B-AP24-1S-5Y-E	Erate,MIST AP24 AP BUNDLE, 5Y 1SVC SUB	B-AP24-2S-5Y-E	Erate,MIST AP24 AP BUNDLE, 5Y 2SVC SUB
AP32	B-AP32-1S-1Y-E	Erate,MIST AP32 AP BUNDLE,1Y 1SVC SUB	B-AP32-2S-1Y-E	Erate,MIST AP32 AP BUNDLE,1Y 2SVC SUB
	B-AP32-1S-3Y-E	Erate,MIST AP32 AP BUNDLE,3Y 1SVC SUB	B-AP32-2S-3Y-E	Erate,MIST AP32 AP BUNDLE,3Y 2SVC SUB
	B-AP32-1S-5Y-E	Erate,MIST AP32 AP BUNDLE,5Y 1SVC SUB	B-AP32-2S-5Y-E	Erate,MIST AP32 AP BUNDLE,5Y 2SVC SUB
AP32E	B-AP32E-1S-1Y-E	Erate,MIST AP32E AP BUNDLE,1Y 1SVC SUB	B-AP32E-2S-1Y-E	Erate,MIST AP32E AP BUNDLE,1Y 2SVC SUB
	B-AP32E-1S-3Y-E	Erate,MIST AP32E AP BUNDLE,3Y 1SVC SUB	B-AP32E-2S-3Y-E	Erate,MIST AP32E AP BUNDLE,3Y 2SVC SUB
	B-AP32E-1S-5Y-E	Erate,MIST AP32E AP BUNDLE,5Y 1SVC SUB	B-AP32E-2S-5Y-E	Erate,MIST AP32E AP BUNDLE,5Y 2SVC SUB
AP33	B-AP33-1S-1Y-E	Erate,MIST AP33 AP BUNDLE,1Y 1SVC SUB	B-AP33-2S-1Y-E	Erate,MIST AP33 AP BUNDLE,1Y 2SVC SUB
	B-AP33-1S-3Y-E	Erate,MIST AP33 AP BUNDLE,3Y 1SVC SUB	B-AP33-2S-3Y-E	Erate,MIST AP33 AP BUNDLE,3Y 2SVC SUB
	B-AP33-1S-5Y-E	Erate,MIST AP33 AP BUNDLE,5Y 1SVC SUB	B-AP33-2S-5Y-E	Erate,MIST AP33 AP BUNDLE,5Y 2SVC SUB

Table4. HPE Networking access point E-Rate bundles (continued)

Family	1 HPE Mist Service: Wi-Fi Assurance		2 HPE Mist Services: Wi-Fi Assurance and Marvis AI Assistant	
	Part number	Description	Part number	Description
AP34	B-AP34-1S-1Y-E	Erate,MIST AP34 AP BUNDLE,1Y 1SVC SUB	B-AP34-2S-1Y-E	Erate,MIST AP34 AP BUNDLE,1Y 2SVC SUB
	B-AP34-1S-3Y-E	Erate,MIST AP34 AP BUNDLE,3Y 1SVC SUB	B-AP34-2S-3Y-E	Erate,MIST AP34 AP BUNDLE,3Y 2SVC SUB
	B-AP34-1S-5Y-E	Erate,MIST AP34 AP BUNDLE,5Y 1SVC SUB	B-AP34-2S-5Y-E	Erate,MIST AP34 AP BUNDLE,5Y 2SVC SUB
AP43	B-AP43-1S-1Y-E	Erate,MIST AP43 AP BUNDLE,1Y 1SVC SUB	B-AP43-2S-1Y-E	Erate,MIST AP43 AP BUNDLE,1Y 2SVC SUB
	B-AP43-1S-3Y-E	Erate,MIST AP43 AP BUNDLE,3Y 1SVC SUB	B-AP43-2S-3Y-E	Erate,MIST AP43 AP BUNDLE,3Y 2SVC SUB
	B-AP43-1S-5Y-E	Erate,MIST AP43 AP BUNDLE,5Y 1SVC SUB	B-AP43-2S-5Y-E	Erate,MIST AP43 AP BUNDLE,5Y 2SVC SUB
AP43E	B-AP43E-1S-1Y-E	Erate,MIST AP43E AP BUNDLE,1Y 1SVC SUB	B-AP43E-2S-1Y-E	Erate,MIST AP43E AP BUNDLE,1Y 2SVC SUB
	B-AP43E-1S-3Y-E	Erate,MIST AP43E AP BUNDLE,3Y 1SVC SUB	B-AP43E-2S-3Y-E	Erate,MIST AP43E AP BUNDLE,3Y 2SVC SUB
	B-AP43E-1S-5Y-E	Erate,MIST AP43E AP BUNDLE,5Y 1SVC SUB	B-AP43E-2S-5Y-E	Erate,MIST AP43E AP BUNDLE,5Y 2SVC SUB
AP45	B-AP45-1S-1Y-E	Erate,MIST AP45 AP BUNDLE,1Y 1SVC SUB	B-AP45-2S-1Y-E	Erate,MIST AP45 AP BUNDLE,1Y 2SVC SUB
	B-AP45-1S-3Y-E	Erate,MIST AP45 AP BUNDLE,3Y 1SVC SUB	B-AP45-2S-3Y-E	Erate,MIST AP45 AP BUNDLE,3Y 2SVC SUB
	B-AP45-1S-5Y-E	Erate,MIST AP45 AP BUNDLE,5Y 1SVC SUB	B-AP45-2S-5Y-E	Erate,MIST AP45 AP BUNDLE,5Y 2SVC SUB
AP45E	B-AP45E-1S-1Y-E	Erate,MIST AP45E AP BUNDLE,1Y 1SVC SUB	B-AP45E-2S-1Y-E	Erate,MIST AP45E AP BUNDLE,1Y 2SVC SUB
	B-AP45E-1S-3Y-E	Erate,MIST AP45E AP BUNDLE,3Y 1SVC SUB	B-AP45E-2S-3Y-E	Erate,MIST AP45E AP BUNDLE,3Y 2SVC SUB
	B-AP45E-1S-5Y-E	Erate,MIST AP45E AP BUNDLE,5Y 1SVC SUB	B-AP45E-2S-5Y-E	Erate,MIST AP45E AP BUNDLE,5Y 2SVC SUB
AP63	B-AP63-1S-1Y-E	Erate,MIST AP63 AP BUNDLE,1Y 1SVC SUB	B-AP63-2S-1Y-E	Erate,MIST AP63 AP BUNDLE,1Y 2SVC SUB
	B-AP63-1S-3Y-E	Erate,MIST AP63 AP BUNDLE,3Y 1SVC SUB	B-AP63-2S-3Y-E	Erate,MIST AP63 AP BUNDLE,3Y 2SVC SUB
	B-AP63-1S-5Y-E	Erate,MIST AP63 AP BUNDLE,5Y 1SVC SUB	B-AP63-2S-5Y-E	Erate,MIST AP63 AP BUNDLE,5Y 2SVC SUB

Table 4. HPE Networking access point E-Rate bundles (continued)

Family	1 HPE Mist Service: Wi-Fi Assurance		2 HPE Mist Services: Wi-Fi Assurance and Marvis AI Assistant	
	Part number	Description	Part number	Description
AP63E	B-AP63E-1S-1Y-E	Erate,MIST AP63E AP BUNDLE,1Y 1SVC SUB	B-AP63E-2S-1Y-E	Erate,MIST AP63E AP BUNDLE,1Y 2SVC SUB
	B-AP63E-1S-3Y-E	Erate,MIST AP63E AP BUNDLE,3Y 1SVC SUB	B-AP63E-2S-3Y-E	Erate,MIST AP63E AP BUNDLE,3Y 2SVC SUB
	B-AP63E-1S-5Y-E	Erate,MIST AP63E AP BUNDLE,5Y 1SVC SUB	B-AP63E-2S-5Y-E	Erate,MIST AP63E AP BUNDLE,5Y 2SVC SUB
AP64	B-AP64-1S-1Y-E	Erate,MIST AP64 AP BUNDLE,1Y 1SVC SUB	B-AP64-2S-1Y-E	Erate,MIST AP64 AP BUNDLE,1Y 2SVC SUB
	B-AP64-1S-3Y-E	Erate,MIST AP64 AP BUNDLE,3Y 1SVC SUB	B-AP64-2S-3Y-E	Erate,MIST AP64 AP BUNDLE,3Y 2SVC SUB
	B-AP64-1S-5Y-E	Erate,MIST AP64 AP BUNDLE,5Y 1SVC SUB	B-AP64-2S-5Y-E	Erate,MIST AP64 AP BUNDLE,5Y 2SVC SUB

Table 4 Notes: Wi-Fi Assurance is E-Rate eligible under internal connections. Marvis AI Assistant is not E-Rate eligible under internal connections. HPE Mist Wireless Gigabit and Multigigabit Wi-Fi Access Point with Support and Cloud Subscription includes the Wi-Fi access point hardware, cloud subscription license, 24x7 technical support, unlimited access to all new cloud features and product documentation, and is available in 1-year, 3-year, or 5-year license terms. AP33, AP43, AP43E, AP45, AP63, and AP63E support dynamic virtual Bluetooth LE (vBLE) antenna array. AP12, AP24, AP32, AP32E, AP34, and AP64 support 2.4 GHz BLE with Omni Antenna. For use cases requiring 7-year terms, separately quote the access point hardware and SUB-1S-7Y-E or SUB-2S-7Y-E subscription.

Summary

Improving student achievement and outcomes while equipping students with 21st century skills is key to the education industry’s digital transformation. The digital curriculum is driving unprecedented demand for bandwidth and connecting soaring numbers of learning devices. With HPE E-Rate-eligible offerings, schools and libraries now have attractive options for delivering an extraordinary learning experience to students while creating cutting-edge connected classrooms for educators and staff, deploying reliable networks that offer more scalability, better security, less complexity, and lower TCO.

Next Steps

Contact your HPE representative or HPE partner to learn how we can help your school, school district, or library improve your broadband connections for digital learning, protect your network investments, and provide an attractive option for your E-Rate infrastructure project. Visit the HPE E-Rate Resource Center at hpe.net/e-rate to learn more.

Visit [HPE.com](https://www.hpe.com)

About HPE

HPE is a leader in essential enterprise technology, bringing together the power of AI, cloud, and networking to help organizations achieve more. As pioneers of possibility, our innovation and expertise advance the way people live and work. We empower our customers across industries to optimize operational performance, transform data into foresight, and maximize their impact. Unlock your boldest ambitions, with HPE. Discover more at [HPE.com](https://www.hpe.com)



[Chat now](#)

© Copyright 2026 Hewlett Packard Enterprise Development LP. The information contained herein is subject to change without notice. The only warranties Hewlett Packard Enterprise products and services are set forth in the express warranty statements accompanying such products and services. Nothing herein should be construed as constituting an additional warranty. Hewlett Packard Enterprise shall not be liable for technical or editorial errors or omissions contained herein.

Bluetooth is a trademark owned by its proprietor and used by Hewlett Packard Enterprise under license. PowerShell is either a registered trademark or trademark of Microsoft Corporation in the United States and/or other countries. All third-party marks are property of their respective owners.

a00151403ENW

HEWLETT PACKARD ENTERPRISE

[hpe.com](https://www.hpe.com)

