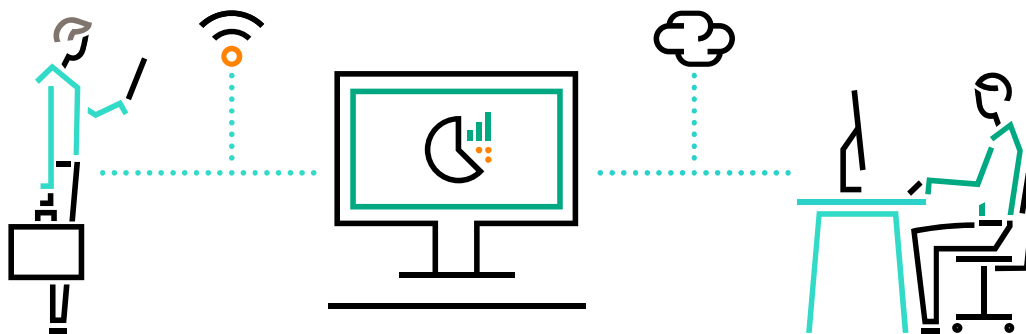


# HPE MISSION-CRITICAL SOLUTIONS FOR SAP HANA THROUGH THE VOICE OF OUR CUSTOMERS

Based on research by TechValidate\*

To be successful, enterprises migrating to SAP HANA® look for the best migration partner. Many of them trusted HPE—#1 system vendor for SAP HANA—and through the voice of their business and technology professionals recognized the value of HPE mission-critical solutions.



## HPE MISSION-CRITICAL SOLUTIONS FOR SAP HANA CUSTOMER SATISFACTION RATING

A System Administrator at a large enterprise telecommunications services company would be very likely to recommend HPE mission-critical solutions for SAP HANA for this reason:

“HPE mission-critical solutions for SAP HANA translates into a fast response, responsible approach.”

Source: System Administrator, Large Enterprise Telecommunications Services Company



TechValidate  
by SurveyMonkey

Validated Published: May, 19, 2020 TVID: 34D-09C-32D

Based on a response of 9 to the question “On a scale of 0-10, how likely would you be to recommend HPE mission-critical solutions for SAP HANA?”

Source: [techvalidate.com/tvid/34D-09C-32D](https://techvalidate.com/tvid/34D-09C-32D)

## HPE MISSION-CRITICAL SOLUTIONS FOR SAP HANA CUSTOMER SATISFACTION RATING

A Chief Technology Officer at a medium enterprise engineering company would be very likely to recommend HPE mission-critical solutions for SAP HANA for this reason:

“HPE mission-critical solutions for SAP HANA mean high availability and rugged solutions.”

Source: Chief Technology Officer, Medium Enterprise Engineering Company

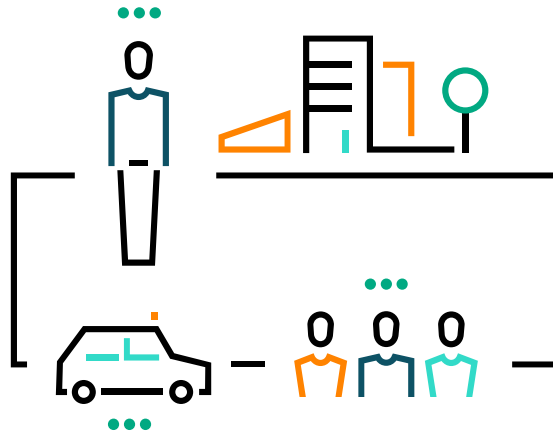


TechValidate  
by SurveyMonkey

Validated Published: May, 19, 2020 TVID: 986-190-B0B

Based on a response of 9 to the question “On a scale of 0-10, how likely would you be to recommend HPE mission-critical solutions for SAP HANA?”

Source: [techvalidate.com/tvid/986-190-B0B](https://techvalidate.com/tvid/986-190-B0B)



HPE MISSION-CRITICAL SOLUTIONS FOR SAP HANA CUSTOMER TESTIMONIAL

“ With HPE mission-critical solutions, our migration from SAP to SAP HANA was a success. Productivity increased by 110%. All the infrastructure is HPE, and we are very happy with the solution

— System Administrator, Medium Enterprise Health Care Company

Source: System Administrator, Medium Enterprise Health Care Company



TechValidate  
by SurveyMonkey

Validated Published: May, 19, 2020 TVID: 864-D27-827

Source: [techvalidate.com/tvid/864-D27-827](https://techvalidate.com/tvid/864-D27-827)

HPE MISSION-CRITICAL SOLUTIONS FOR SAP HANA CUSTOMER TESTIMONIAL

“ Application and the database running on HPE mission-critical solutions for SAP HANA remain stable and without shutdowns attributable to infrastructure failures. All maintenance activities are completed successfully and without affecting the customer.

— Maria Chatelain, Operations Manager, DXC Technology

Source: Maria Chatelain, Operations Manager, DXC Technology



TechValidate  
by SurveyMonkey

Validated Published: May, 19, 2020 TVID: 5EB-788-0F2

Source: [techvalidate.com/tvid/5EB-788-0F2](https://techvalidate.com/tvid/5EB-788-0F2)

HPE MISSION-CRITICAL SOLUTIONS FOR SAP HANA CUSTOMER SATISFACTION RATING

Maria Chatelain, an Operations Manager at DXC Technology, would be very likely to recommend HPE mission-critical solutions for SAP HANA for this reason:

“ I recommend services for SAP HANA offered by HPE Pointnext Services, which provides excellent support and commitment to the customer.

Source: Maria Chatelain, Operations Manager, DXC Technology



TechValidate  
by SurveyMonkey

Validated Published: May, 19, 2020 TVID: A05-792-EF7

Based on a response of 10 to the question "On a scale of 0-10, how likely would you be to recommend HPE mission-critical solutions for SAP HANA?"

Source: [techvalidate.com/tvid/A05-792-EF7](https://techvalidate.com/tvid/A05-792-EF7)



HPE MISSION-CRITICAL SOLUTIONS FOR SAP HANA CUSTOMER SATISFACTION RATING

Romulo Luis, an Infrastructure Engineer at Ministry of Finance KSA, would be very likely to recommend HPE mission-critical solutions for SAP HANA for this reason:

“ HPE mission-critical solutions for SAP HANA has excellent performance.

Source: Romulo Luis, Infrastructure Engineer, Ministry of Finance KSA



TechValidate

Validated Published: May 19, 2020 TVID: 6C3-60E-782

Based on a response of 10 to the question "On a scale of 0-10, how likely would you be to recommend HPE mission-critical solutions for SAP HANA?"

Source: [techvalidate.com/tvid/6C3-60E-782](https://techvalidate.com/tvid/6C3-60E-782)

HPE MISSION-CRITICAL SOLUTIONS FOR SAP HANA CUSTOMER SATISFACTION RATING

Sakthi C., an Infrastructure Engineer at Tata Consultancy Services Limited, would be very likely to recommend HPE mission-critical solutions for SAP HANA for this reason:

“ HPE mission-critical solutions for SAP HANA is easy and simple to use at Enterprise level.

Source: Sakthi C., Infrastructure Engineer, Tata Consultancy Services Limited



TechValidate

Validated Published: May 19, 2020 TVID: E05-C97-DC8

Based on a response of 10 to the question "On a scale of 0-10, how likely would you be to recommend HPE mission-critical solutions for SAP HANA?"

Source: [techvalidate.com/tvid/E05-C97-DC8](https://techvalidate.com/tvid/E05-C97-DC8)

HPE MISSION-CRITICAL SOLUTIONS FOR SAP HANA CUSTOMER SATISFACTION RATING

A System Administrator at a Global 500 automotive & transport company would be very likely to recommend HPE mission-critical solutions for SAP HANA for this reason:

“ HPE mission-critical solutions for SAP HANA has been helping us with critical issues in a very professional and speedy manner.

Source: System Administrator, Global 500 Automotive & Transport Company



TechValidate

Validated Published: May 19, 2020 TVID: 2D2-29B-5EA

Based on a response of 9 to the question "On a scale of 0-10, how likely would you be to recommend HPE mission-critical solutions for SAP HANA?"

Source: [techvalidate.com/tvid/2D2-29B-5EA](https://techvalidate.com/tvid/2D2-29B-5EA)

HPE MISSION-CRITICAL SOLUTIONS FOR SAP HANA CUSTOMER SATISFACTION RATING

An IT Architect at a medium enterprise energy & utilities company would be likely to recommend HPE mission-critical solutions for SAP HANA for this reason:

“ HPE support for SAP HANA deployments is far better in terms of response time and quality – especially no finger-pointing.

Source: IT Architect, Medium Enterprise Energy & Utilities Company



TechValidate

Validated Published: May 19, 2020 TVID: 2B0-EBB-3C9

Based on a response of 8 to the question "On a scale of 0-10, how likely would you be to recommend HPE mission-critical solutions for SAP HANA?"

Source: [techvalidate.com/tvid/2B0-EBB-3C9](https://techvalidate.com/tvid/2B0-EBB-3C9)

HPE MISSION-CRITICAL SOLUTIONS FOR SAP HANA CUSTOMER SATISFACTION RATING

An Infrastructure Engineer at a Global 500 automotive & transport company would be very likely to recommend HPE mission-critical solutions for SAP HANA for this reason:

“ Great experience with HPE solutions for SAP HANA at my customer. The Center of Excellence team is always there to provide excellent support.

Source: Infrastructure Engineer, Global 500 Automotive & Transport Company



TechValidate

Validated Published: May 19, 2020 TVID: 3B4-917-D3E

Based on a response of 10 to the question "On a scale of 0-10, how likely would you be to recommend HPE mission-critical solutions for SAP HANA?"

Source: [techvalidate.com/tvid/3B4-917-D3E](https://techvalidate.com/tvid/3B4-917-D3E)

HPE MISSION-CRITICAL SOLUTIONS FOR SAP HANA CUSTOMER TESTIMONIAL

“ Migrating to HPE mission-critical solutions has boosted our system performance, and it becomes very flexible for handling system maintenance issues and operation.

— Razibur Rahman, Head ERP Administration, Berger Paints Bangladesh

Source: Razibur Rahman, Head ERP Administration, Berger Paints Bangladesh



TechValidate

Validated Published: May 19, 2020 TVID: 017-0B2-763

Source: [techvalidate.com/tvid/017-0B2-763](https://techvalidate.com/tvid/017-0B2-763)





HPE MISSION-CRITICAL SOLUTIONS FOR SAP HANA CUSTOMER REVIEW



4/5 Stars

Would you recommend HPE mission-critical solutions for SAP HANA, and if so, why?

“ Yes, it’s a very good support team with different levels of experience that can help us on issues that we can’t take care of ourselves.

Source: System Administrator, Global 500 Automotive & Transport Company



TechValidate

Validated Published: May, 19, 2020 TVID: 964-CA6-583

Source: [techvalidate.com/tvid/964-CA6-583](https://techvalidate.com/tvid/964-CA6-583)

HPE MISSION-CRITICAL SOLUTIONS FOR SAP HANA CUSTOMER REVIEW



4/5 Stars

Please describe how your organization uses HPE mission-critical solutions infrastructure for SAP HANA.

“ Critical for business SAP ERP / BW / SCM on HANA solutions are running 24/7 on the HPE mission-critical platform.

Would you recommend HPE mission-critical solutions for SAP HANA, and if so, why?

“ Yes, I would like to recommend HPE mission-critical solutions for SAP HANA, especially for scale-up solutions since HPE have the capability of scalability, proven record of performance, reliability and flexibility on system operation.

Source: Razibur Rahman, Head ERP Administration, Berger Paints Bangladesh



TechValidate

Validated Published: May, 19, 2020 TVID: 31A-00E-49D

Source: [techvalidate.com/tvid/31A-00E-49D](https://techvalidate.com/tvid/31A-00E-49D)

Library of stats & charts

Library of mini case studies

Library of Testimonials

Library of Reviews



Find full library of HPE Mission-Critical Solutions for SAP HANA Proof Points in a single repository:  
[techvalidate.com/portals/hpe-mcs-sap-hana-collections-of-proof-points-oct-2019](https://techvalidate.com/portals/hpe-mcs-sap-hana-collections-of-proof-points-oct-2019)

Based on research by TechValidate, a third party customer research platform.

If you have questions about usage, contact the [TechValidate team](#).

## LEARN MORE AT

[HPE Mission-Critical Solutions for SAP HANA Proof Points Library](#)

Make the right purchase decision.  
Contact our presales specialists.



Chat



Email



Call



Get updates

© Copyright 2020 Hewlett Packard Enterprise Development LP. The information contained herein is subject to change without notice. The only warranties for Hewlett Packard Enterprise products and services are set forth in the express warranty statements accompanying such products and services. Nothing herein should be construed as constituting an additional warranty. Hewlett Packard Enterprise shall not be liable for technical or editorial errors or omissions contained herein.

SAP HANA is a trademark or registered trademark of SAP SE (or an SAP affiliate company) in Germany and other countries. All third-party marks are property of their respective owners.

a00095780ENW, June 2020, Rev. 1

  
**Hewlett Packard  
Enterprise**