

### Overview

#### HPE G2 Advanced Series Racks

HPE G2 Advanced Series Racks are designed for low-to-medium density IT configurations deployed in a diverse set of environments – from the data closet to the data center. Following EIA-310 specifications for 19-inch racks, G2 Advanced Racks are designed specifically to support a wide range of HPE IT equipment (servers, storage, and networking), as well as the entire portfolio HPE Rack and Power Infrastructure solutions (PDU, UPS and KVM).

All HPE G2 Advanced Series Racks are supported with a 10 year limited warranty that provides either repair or complete replacement of the rack. Offering this industry-leading warranty requires a highly reliable and durable design that includes features such as a fully-welded, roll-form rack design, heavy-gauge rails, and heavy-duty castors that can support a static load of up to 3000 lbs. Additionally, select shock pallet models include packaging specifically designed to support the shipment of pre-configured racks with up to 2,250 lbs. of It equipment.

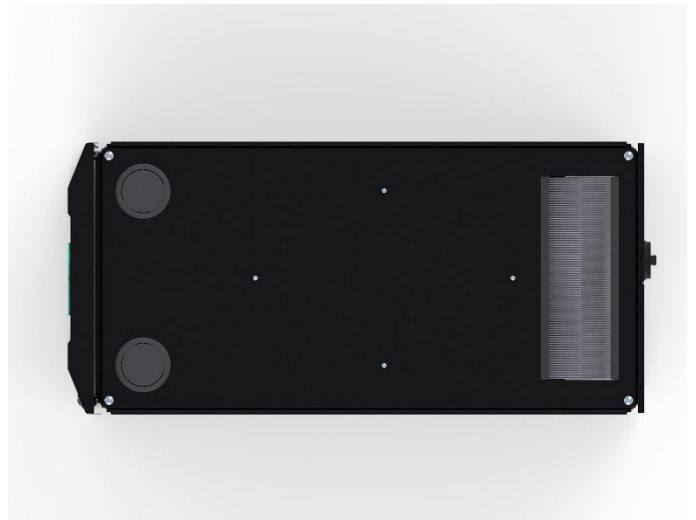
The G2 Advanced Series Rack portfolio includes a wide range of rack models covering a variety of heights, widths, and depths. To simplify purchasing and installation, all rack models include locking side panels and baying kits. Additionally, HPE offers a large portfolio of rack accessories that support airflow management, cable management, and added rack stability.



Overview



P9K07A



P9K09A



## Standard Features

### HPE G2 Advanced Series Rack Models

Review the following details to better understand the different rack models that are offered in the HPE G2 Advanced Series rack portfolio.

#### Pallet Rack

Standard pallet and packaging for racks that will be configured on-site.

#### Shock Pallet

Pallet and packaging designed to support racks that will be shipped directly to the data center fully configured.

- Can support up to 2,250 lbs. of IT equipment during shipment
- Packaging includes integrated ramp to simplify rack deployment
- Must be selected when requesting HPE Factory Express Services

#### Network Racks

Designed to support dense Networking equipment configurations, or the integration of Networking, Server, and Storage equipment into a single industry standard 19" rack.

- Front and rear vertical EIA rails are moved back 75mm to facilitate front to rear cabling
- Include additional bristle covered cable access slots in the front and top of the rack to prevent the mixing of hot and cold air and to allow pass-through for large cable connectors and bundles

---

## HPE G2 Advanced Series Racks

### 600mm Wide G2 Advanced Series Rack Models

HPE 22U 600mmx1075mm G2 Kitted Advanced Pallet Rack with Side Panels and Baying	P9K03A
HPE 22U 600mmx1075mm G2 Kitted Advanced Shock Rack with Side Panels and Baying	P9K04A
HPE 42U 600mmx1075mm G2 Kitted Advanced Pallet Rack with Side Panels and Baying	P9K07A
HPE 42U 600mmx1075mm G2 Kitted Advanced Shock Rack with Side Panels and Baying	P9K08A

### Additional HPE G2 Advanced Series Rack models

#### 600mm Wide G2 Advanced Series Rack Models

HPE 36U 600mmx1075mm G2 Kitted Advanced Pallet Rack with Side Panels and Baying	P9K05A
HPE 36U 600mmx1075mm G2 Kitted Advanced Shock Rack with Side Panels and Baying	P9K06A
HPE 42U 600mmx1200mm G2 Kitted Advanced Pallet Rack with Side Panels and Baying	P9K09A
HPE 42U 600mmx1200mm G2 Kitted Advanced Shock Rack with Side Panels and Baying	P9K10A

#### 800mm Wide G2 Advanced Series Rack Models

HPE 42U 800mmx1200mm G2 Kitted Advanced Pallet Rack with Side Panels and Baying	P9K15A
---	--------

#### G2 Advanced Series Network Rack Models

---



## Standard Features

HPE G2 Advanced Series Racks						
600mm Wide G2 Advanced Series Rack Models						
Model	Rack Height	Rack Weight (without packaging)	Shipping Weight (with packaging)	Static Load (without packaging)	Dynamic Load (Rolling) (without packaging)	Dynamic Load (Shipping)
P9K03A	22U	173.06 lb (78.50 kg)	202.83 lb (92.00 kg)	3,000 lb (1,360.78 kg)	2500 lb (1133.98 kg)	-
P9K04A	22U	173.06 lb (78.50 kg)	376.99 lb (171.00 kg)	3,000 lb (1,360.78 kg)	2500 lb (1133.98 kg)	2250 lb (1020.56 kg)
P9K07A	42U	281.09 lb (127.50 kg)	310.85 lb (141.00 kg)	3,000 lb (1,360.78 kg)	2500 lb (1133.98 kg)	-
P9K08A	42U	281.09 lb (127.50 kg)	485.02 lb (220.00 kg)	3,000 lb (1,360.78 kg)	2500 lb (1133.98 kg)	2250 lb (1020.56 kg)
P9K05A	36U	255.74 lb (116.00 kg)	285.50 lb (129.50 kg)	3,000 lb (1,360.78 kg)	2500 lb (1133.98 kg)	-
P9K06A	36U	255.74 lb (116.00 kg)	459.66 lb (208.50 kg)	3,000 lb (1,360.78 kg)	2500 lb (1133.98 kg)	2250 lb (1020.56 kg)
P9K09A	42U	310.85 lb (141.00 kg)	342.802 lb (155.50 kg)	3,000 lb (1,360.78 kg)	2500 lb (1133.98 kg)	-
P9K10A	42U	310.85 lb (141.00 kg)	531.31 lb (241.00 kg)	3,000 lb (1,360.78 kg)	2500 lb (1133.98 kg)	2250 lb (1020.56 kg)
P9K19A	48U	141.50 lb (311.95 kg)	341.72 lb (155.00 kg)	3,000 lb (1,360.78 kg)	2500 lb (1133.98 kg)	-
HPE G2 Advanced Series Racks						
800mm Wide G2 Advanced Series Rack Models						
Model	Rack Height	Rack Weight (without packaging)	Shipping Weight (with packaging)	Static Load (without packaging)	Dynamic Load (Rolling) (without packaging)	Dynamic Load (Shipping)
P9K11A	42U	346.35 lb (157.10 kg)	376.11 lb (170.60 kg)	3,000 lb (1,360.78 kg)	2500 lb (1133.98 kg)	-
P9K12A	42U	346.35 lb (157.10 kg)	550.27 lb (249.60 kg)	3,000 lb (1,360.78 kg)	2500 lb (1133.98 kg)	2250 lb (1020.56 kg)
P9K15A	42U	362.66 lb (164.50 kg)	394.63 lb (179.00 kg)	3,000 lb (1,360.78 kg)	2500 lb (1133.98 kg)	-
P9K16A	42U	362.66 lb (164.50 kg)	583.12 lb (264.50 kg)	3,000 lb (1,360.78 kg)	2500 lb (1133.98 kg)	2250 lb (1020.56 kg)
P9K21A	48U	363.76 lb (165.00 kg)	393.53 lb (178.50 kg)	3,000 lb (1,360.78 kg)	2500 lb (1133.98 kg)	2250 lb (1020.56 kg)
HPE G2 Advanced Series Racks						
G2 Advanced Series Network Rack Models						
Model	Rack Height	Rack Weight (without packaging)	Shipping Weight (with packaging)	Static Load (without packaging)	Dynamic Load (Rolling) (without packaging)	Dynamic Load (Shipping)
P9K17A	42U	346.35 lb (157.10 kg)	376.11 lb (170.60 kg)	3,000 lb (1,360.78 kg)	2500 lb (1133.98 kg)	-
P9K18A	42U	362.66 lb (164.50 kg)	583.12 lb (264.50 kg)	3,000 lb (1,360.78 kg)	2500 lb (1133.98 kg)	2250 lb (1020.56 kg)

---

## Standard Features

### What's Included With Rack?

- Complete set of 4-piece locking side panels
  - Baying kit
  - Hardware Kit (including key to front and rear doors)
  - Support documentation
- 

### Compatibility

- Designed to EIA-310 specifications for industry standard racks
  - Designed for HPE IT solutions
  - Integration with HPE rack and power infrastructure solutions
  - Include adjustable EIA rails
- 

### Reliability/ Durability

- 10 year limited warranty. Hardware replacement and repair is available for ten years from date of purchase.
  - Proven frame design, heavy-gauge mounting rails, and heavy-duty casters can support up to 3000 lbs. static loads and up to 2250 lbs. dynamic (rolling) loads
  - Highest levels of ship-load testing to ensure a dynamic load of up to 2250 lbs. when selecting a shock pallet rack option
  - Fully welded, roll form rack frame
  - High-strength steel side bracing
- 

### Usability/ Management

- Industry's widest range of enclosure sizes with rack depths of 42-inches or greater
  - Side panels and baying kit included with all G2 Advanced Series rack models
  - Multiple 800mm wide rack models including Network rack models available
  - Includes either 2 (1075mm models) or 4 (1200mm models) integrated and adjustable full-height PDU Mounting Trays in each rack to support PDU and cable management accessories
  - 80% front-door airflow perforation
  - Removal and reversible rack canopy with pre-installed brush strips capable of supporting easy pass-through of large cables and connectors
  - Enhanced front and rear door cabling channels
  - Redesigned bottom area designed for unobstructed access to data center floor
  - Depth adjustable, side EIA mounting rails designed to support front-to-back cabling
  - Flush-mounted, locking 2-piece side panels
  - Quick release front and rear doors
  - Wide array of rack accessories for airflow management, cable management, stabilization, and safety/security
  - Eyebolt support integrated into enclosure frame
  - Configuration services through HPE Factory Express
- 

### Safety/Security

- Industry standard lock panel on the front and rear doors capable of supporting a wide range of third-party electronic locking/security solutions
  - Flush-mounted side panels that support rack baying when installed
  - Optional electrical grounding covering frame and components
  - Single key access for front doors, rear doors, and side panels
- 



## Standard Features

### Industry Standards Compliance

- EIA
  - Type A cabinet per section 4.1.1
  - UL/CES Certification
  - Yes
  - WEEE
  - Yes
  - RoHS compliant
  - Yes
  - TAA compliant
  - Compliant for all rack models sold in North America
- 



## Service and Support

### HPE Services

No matter where you are in your digital transformation journey, you can count on HPE Services to deliver the expertise you need when, where and how you need it. From planning to deployment, ongoing operations and beyond, our experts can help you realize your digital ambitions.

<https://www.hpe.com/services>

---

### Consulting Services

No matter where you are in your journey to hybrid cloud, experts can help you map out your next steps. From determining what workloads should live where, to handling governance and compliance, to managing costs, our experts can help you optimize your operations.

<https://www.hpe.com/services/consulting>

---

### HPE Managed Services

HPE runs your IT operations, providing services that monitor, operate, and optimize your infrastructure and applications, delivered consistently and globally to give you unified control and let you focus on innovation.

[HPE Managed Services | HPE](#)

---

### Operational services

Optimize your entire IT environment and drive innovation. Manage day-to-day IT operational tasks while freeing up valuable time and resources. Meet service-level targets and business objectives with features designed to drive better business outcomes.

<https://www.hpe.com/services/operational>

---

### HPE Complete Care Service

HPE Complete Care Service is a modular, edge-to-cloud IT environment service designed to help optimize your entire IT environment and achieve agreed upon IT outcomes and business goals through a personalized experience. All delivered by an assigned team of HPE Services experts. HPE Complete Care Service provides:

- A complete coverage approach -- edge to cloud
- An assigned HPE team
- Modular and fully personalized engagement
- Enhanced Incident Management experience with priority access
- Digitally enabled and AI driven customer experience

<https://www.hpe.com/services/complecare>

---

### HPE Tech Care Service

HPE Tech Care Service is the operational support service experience for HPE products. The service goes beyond traditional support by providing access to product specific experts, an AI driven digital experience, and general technical guidance to not only reduce risk but constantly search for ways to do things better. HPE Tech Care Service delivers a customer-centric, AI driven, and digitally enabled customer experience to move your business forward. HPE Tech Care Service is available in three response levels. Basic, which provides 9x5 business hour availability and a 2-hour response time. Essential which provides a 15-minute response time 24x7 for most enterprise level customers, and Critical which includes a 6-hour repair commitment where available and outage management response for severity 1 incidents.

<https://www.hpe.com/services/techcare>

---



## Service and Support

### HPE Lifecycle Services

HPE Lifecycle Services provide a variety of options to help maintain your HPE systems and solutions at all stages of the product lifecycle. A few popular examples include:

- Lifecycle Install and Startup Services: Various levels for physical installation and power on, remote access setup, installation and startup, and enhanced installation services with the operating system.
- HPE Firmware Update Analysis Service: Recommendations for firmware revision levels for selected HPE products, taking into account the relevant revision dependencies within your IT environment.
- HPE Firmware Update Implementation Service: Implementation of firmware updates for selected HPE server, storage, and solution products, taking into account the relevant revision dependencies within your IT environment.
- Implementation assistance services: Highly trained technical service specialists to assist you with a variety of activities, ranging from design, implementation, and platform deployment to consolidation, migration, project management, and onsite technical forums.
- HPE Service Credits: Access to prepaid services for flexibility to choose from a variety of specialized service activities, including assessments, performance maintenance reviews, firmware management, professional services, and operational best practices.

**Notes:** To review the list of Lifecycle Services available for your product go to:

<https://www.hpe.com/services/lifecycle>

For a list of the most frequently purchased services using service credits, see the [HPE Service Credits Menu](#)

---

### Other Related Services from HPE Services:

#### HPE Education Services

Training and certification designed for IT and business professionals across all industries. Broad catalogue of course offerings to expand skills and proficiencies in topics ranging from cloud and cybersecurity to AI and DevOps. Create learning paths to expand proficiency in a specific subject. Schedule training in a way that works best for your business with flexible continuous learning options.

<https://www.hpe.com/services/training>

#### Defective Media Retention

An option available with HPE Complete Care Service and HPE Tech Care Service and applies only to Disk or eligible SSD/Flash Drives replaced by HPE due to malfunction.

Consult your HPE Sales Representative or Authorized Channel Partner of choice for any additional questions and services options.

#### Parts and Materials

HPE will provide HPE-supported replacement parts and materials necessary to maintain the covered hardware product in operating condition, including parts and materials for available and recommended engineering improvements.

Parts and components that have reached their maximum supported lifetime and/or the maximum usage limitations as set forth in the manufacturer's operating manual, product quick-specs, or the technical product data sheet will not be provided, repaired, or replaced as part of these services.

#### How to Purchase Services

Services are sold by Hewlett Packard Enterprise and Hewlett Packard Enterprise Authorized Service Partners:

- Services for customers purchasing from HPE or an enterprise reseller are quoted using HPE order configuration tools.
- Customers purchasing from a commercial reseller can find services at <https://ssc.hpe.com/portal/site/ssc/>





---

## Service and Support

### AI Powered and Digitally Enabled Support Experience

Achieve faster time to resolution with access to product-specific resources and expertise through a digital and data driven customer experience

Sign into the HPE Support Center experience, featuring streamlined self-serve case creation and management capabilities with inline knowledge recommendations. You will also find personalized task alerts and powerful troubleshooting support through an intelligent virtual agent with seamless transition when needed to a live support agent.

<https://support.hpe.com/hpesc/public/home/signin>

---

### Consume IT On Your Terms

**HPE GreenLake** edge-to-cloud platform brings the cloud experience directly to your apps and data wherever they are—the edge, colocations, or your data center. It delivers cloud services for on-premises IT infrastructure specifically tailored to your most demanding workloads. With a pay-per-use, scalable, point-and-click self-service experience that is managed for you, HPE GreenLake edge-to-cloud platform accelerates digital transformation in a distributed, edge-to-cloud world.

- Get faster time to market
- Save on TCO, align costs to business
- Scale quickly, meet unpredictable demand
- Simplify IT operations across your data centers and clouds

To learn more about HPE Services, please contact your Hewlett Packard Enterprise sales representative or Hewlett Packard Enterprise Authorized Channel Partner. Contact information for a representative in your area can be found at "Contact HPE"

<https://www.hpe.com/us/en/contact-hpe.html>

For more information

<http://www.hpe.com/services>

---



## Related Options

Hewlett Packard Enterprise offers a full line of accessories and options that can be added to HPE Racks allowing you to customize each rack to fit your IT requirements. HPE Rack accessories include upgrades such as side panels, baying kits, cable management kits, drawers, shelving, and filler panels. To build a complete rack and power infrastructure for your IT environment, Hewlett Packard Enterprise also offers a full line of options that include power distribution units (PDU), uninterruptible power systems (UPS), and KVM (keyboard, video, mouse) consoles and switches. See HPE Rack and Power Infrastructure for more complete information at: <https://www.hpe.com/info/rackandpower>.

**Notes:** OD1 may appear after the above selected part numbers on yours sales order if factory integration is indicated.

### Rack Baying Kits

HPE G2 Rack Baying Kit P9L12A

**Notes:** This Baying Kit is used to connect HPE G2 racks of the same U height and depth together and includes the following components: (4) 24-inch baying brackets, (4) 600mm baying brackets, and T-30 Torx screws.

HPE G2 Advanced and Enterprise Series Rack 1075mm and 1200mm Offset Baying Kit P9L19A

### Airflow Optimization

HPE Air Flow Optimization Kit BW930A

**Notes:** The Airflow Optimization kit seals air gaps inside the rack, in between bayed racks, and the clearance from the floor to the rack to prevent hot and cold air from mixing thus optimizing the temperature at which the chilled air enters the racked servers. **Notes:** When configuring racks through Factory Express, a Rack Optimization kit will automatically ship with the rack. This kit is recommended for all other bayed rack configurations also.

### Sidewall Panel Kits

HPE G2 Rack 42U 1075mm Side Panel Kit P9L15A

HPE G2 Rack 42U 1200mm Side Panel Kit P9L16A

HPE G2 Rack 48U 1075mm Side Panel Kit P9L17A

HPE G2 Rack 48U 1200mm Side Panel Kit P9L18A

**Notes:** HPE G2 Rack Side Panel Kits are locking, 2-piece panels that provide coverage for both sides of the rack. **Notes:** All HPE G2 Advanced Series Racks ship with a complete set of side panels.

### Rack Stabilization Kits

HPE 600mm Rack Stabilizer Kit BW932A

HPE 600mm Heavy Duty V2 Stabilizer Kit BW961A

HPE 800mm Rack Stabilizer Kit BW933A

**Notes:** Anti-tip stabilizer kits provide stability and support when equipment is installed, removed or accessed within the rack. Heavy Duty stabilizer kits should be used when a single racked component exceeds 200 lbs.

HPE Rack Ballast Kit 120672-B21

**Notes:** The Ballast Kit is designed to provide additional stability and support when used with the Stabilizer Kit. It is typically used when very heavy equipment is routinely installed, removed or accessed within the rack. Compatible with HPE Advanced and Enterprise Series racks.

### Tie Down Kit

HPE Universal G2 Rack Tie Down Kit Q9V01A

**Notes:** The Rack Tie Down Kit is used to secure the rack to the datacenter floor.

### Universal 1U Filler Panels

HPE 1U 10-pack Black Universal Filler Panel BW928A

HPE 1U 100-pack Black Universal Filler Panel BW929A

**Notes:** Blanking panels are made from high grade molded plastic, and are designed to be installed without tools. The use of blanking panels is recommended to ensure proper airflow.

## Related Options

### Rack Shelves

HPE 10000 Rack 1U Monitor Utility Shelf (Recommended) 253449-B21

**Notes:** This is a 1U fixed shelf that can be mounted at any height to place a monitor or other component within the rack. The shelf has a maximum weight capacity of 150 lbs. (68kg).

### Adjustable Rails

Depth Adjustable Fixed Rail Kit 332558-B21

**Notes:** This kit contains two depth adjustable rails that allow Hewlett Packard Enterprise servers, storage, UPSs and other products to be mounted in HPE or third-party racks. Maximum weight capacity is 300 lbs. (136 kg).

### Locking Drawer

HPE 2U Universal Locking Drawer (Extended) 361591-B21

**Notes:** This rack accessory mounts on HPE Advanced and Enterprise Series racks with sliding rails and is used to store CD's, instruction manuals, tools, and any other items that are frequently used at the rack. Drawer includes lock.

### Cable Management Kits

HPE Quarter Turn Hook and Loop 10 Pack Kit BW963A

HPE Quarter Turn Hook and Loop 100 Pack Kit BW964A

**Notes:** Quarter turn hook and loop straps help attach cables and other devices to the accessory bracket in the rear of the rack without tools.

HPE G2 Cable Management D-ring Kit Q9V02A

**Notes:** This kit consists of 10 "D" rings that can be used for cable management.

HPE Rack Cable Management Velcro Clips 379820-B21

HPE G2 Rack Cable Management Combo Kit Q9V03A

**Notes:** The HPE Rack Cable Management Kit includes a 1U and 2U front cable entry panel with brush inserts, 2x crossover cable brackets, 10x D-rings, 10x hook and loop straps (8 inch), 10x hook and loop straps (10 inch), and mounting hardware.

### Grounding Kit

HPE G2 Rack Grounding Kit P9L11A

**Notes:** The Rack Grounding Kit can be used to reduce the level of electromagnetic emissions outside the rack. The Kit includes (2) 6" Grounding Straps, (3) 14.5" Grounding Straps, (4) 6" Grounding Straps w/connectors, (4) 14.5" Grounding Straps w/connectors.

### Hardware Kit

HPE Rack Hardware Kit H6J85A

**Notes:** The HPE Rack Hardware Kit includes 24x M6 cage nuts, 24x M6x16 T25 screws, 10x 6mm thread clip nuts, cage nut tool, and 5x Quarter turn hook and loop straps.



---

## Related Options

### HPE Support Services

HPE Install Rack and Rack Options Service

U2871E

---

### HPE Factory Express Services

HPE Hardware Customization Service

HA838A1

HPE 3rd Party Hardware Install Service

HA844A1

HPE Customer Defined Rack Cable Labeling Service

HA850A1

HPE Customer Furnished Equipment Handling Service

HA851A1

HPE Rack Product Placement Service

HA864A1

**Notes:** HPE Factory Express offers a full line of services. For more information visit

<http://www.hpe.com/info/factoryexpress>.

---



## Technical Specifications

HPE G2 Advanced Series Racks					
600mm Wide G2 Advanced Series Rack Models					
Rackable/Useable Area				Total Area	
Model	Height	Width	Depth	Total Cabinet Area (HxWxD)	Shipping Dimensions (HxWxD)
P9K03A	22U	600mm	1075mm	43.95 x 23.50 x 43.78 in 1116.38 x 597.00 x 1111.43 mm	51 x 28 x 48 in 1282 x 710 x 1200 mm
P9K04A	22U	600mm	1075mm	43.95 x 23.50 x 43.78 in 1116.38 x 597.00 x 1111.43 mm	60 x 36 x 51 in 1518 x 903 x 1291 mm
P9K07A	42U	600mm	1075mm	78.99 x 23.50 x 43.78 in 2006.39 x 597.00 x 1111.43 mm	86 x 28 x 48 in 2172 x 710 x 1200 mm
P9K08A	42U	600mm	1075mm	78.99 x 23.50 x 43.78 in 2006.39 x 597.00 x 1111.43 mm	86 x 36 x 51 in 2184 x 903 x 1291 mm
P9K05A	36U	600mm	1075mm	68.83 x 23.50 x 43.78 in 1748.38 x 597.00 x 1111.43 mm	76 x 28 x 48 in 1914 x 710 x 1200 mm
P9K06A	36U	600mm	1075mm	68.83 x 23.50 x 43.78 in 1748.38 x 597.00 x 1111.43 mm	86 x 36 x 51 in 2184 x 903 x 1291 mm
P9K09A	42U	600mm	1200mm	78.99 x 23.50 x 50.65 in 2006.39 x 597.00 x 1286.43 mm	86 x 28 x 55 in 2167 x 710 x 1393 mm
P9K10A	42U	600mm	1200mm	78.99 x 23.50 x 50.65 in 2006.39 x 597.00 x 1286.43 mm	86 x 36 x 58 in 2185 x 903 x 1470 mm
P9K19A	48U	600mm	1075mm	90.49 x 23.50 x 43.78 in 2298.41 x 597.00 x 1111.43 mm	96 x 28 x 48 in 2437 x 710 x 1200 mm
HPE G2 Advanced Series Racks					
800mm Wide G2 Advanced Series Rack Models					
Rackable/Useable Area				Total Area	
Model	Height	Width	Depth	Total Cabinet Area (HxWxD)	Shipping Dimensions (HxWxD)
P9K11A	42U	800mm	1075mm	78.99 x 31.38 x 43.78 in 2006.39 x 797.00 x 1111.43 mm	76 x 36 x 48 in 2172 x 910 x 1218 mm
P9K12A	42U	800mm	1075mm	78.99 x 31.38 x 43.78 in 2006.39 x 797.00 x 1111.43 mm	87 x 44 x 51 in 2193 x 1103 x 1291 mm
P9K15A	42U	800mm	1200mm	78.99 x 31.38 x 50.65 in 2006.39 x 797.00 x 1286.43 mm	76 x 36 x 55 in 2172 x 910 x 1393 mm
P9K16A	42U	800mm	1200mm	78.99 x 31.38 x 50.65 in 2006.39 x 797.00 x 1286.43 mm	88 x 44 x 58 in 2216 x 1103 x 1470 mm
P9K21A	48U	800mm	1075mm	90.49 x 31.38 x 43.78 in 2298.41 x 797.00 x 1111.43 mm	96 x 36 x 48 in 2438 x 910 x 1218 mm
HPE G2 Advanced Series Racks					
G2 Advanced Series Network Rack Models					
Rackable/Useable Area				Total Area	
Model	Height	Width	Depth	Total Cabinet Area (HxWxD)	Shipping Dimensions (HxWxD)
P9K17A	42U	800mm	1075mm	78.99 x 31.38 x 43.78 in 2006.39 x 797.00 x 1111.43 mm	76 x 36 x 48 in 2172 x 910 x 1218 mm
P9K18A	42U	800mm	1200mm	78.99 x 31.38 x 50.65 in 2006.39 x 797.00 x 1286.43 mm	88 x 44 x 58 in 2216 x 1103 x 1470 mm

---

## Technical Specifications

### Understanding rack weights and loads

HPE G2 Advanced Series Racks are designed to support high capacity weight loads that include the weight of the rack and all the equipment installed. Weight loads are defined as:

- Shipping Weight - rack including shipping packaging and materials.
- Static Load – maximum loaded weight that a rack can support when stationary.
- Dynamic Load (Rolling) – maximum loaded weight a rack can support when rolled.
- Dynamic Load (Shipping) – maximum loaded weight a rack can support when shipped configured with IT equipment

HPE G2 Advanced Series Racks are rated for Static Loads of up to 3000 lbs. If you require a rack that can be shipped when fully loaded with equipment, please consider purchasing one of our Shock Pallet models that can support up to 2,250 lbs. during shipment.

---

### Environment-friendly Products and Approach - End-of-life Management and Recycling

Hewlett Packard Enterprise offers end-of-**life product return, trade-in, and recycling programs**, in many geographic areas, for our products. Products returned to Hewlett Packard Enterprise will be recycled, recovered or disposed of in a responsible manner.

The EU WEEE directive (2002/95/EC) requires manufacturers to provide treatment information for each product type for use by treatment facilities. This information (product disassembly instructions) is posted on the Hewlett Packard Enterprise web site. These instructions may be used by recyclers and other WEEE treatment facilities as well as Hewlett Packard Enterprise OEM customers who integrate and re-sell Hewlett Packard Enterprise equipment.

---



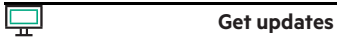
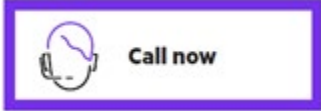
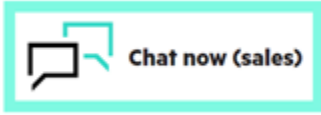
## Summary of Changes

Date	Version History	Action	Description of Change
04-Dec-2023	Version 13	Changed	Service and Support Section was updated.
15-Nov-2021	Version 12	Changed	Service and Support Section was updated. Obsolete SKUs were removed.
02-Apr-2019	Version 11	Changed	Related Options Section was updated. Obsolete SKUs were removed.
03-Dec-2018	Version 10	Changed	Related Options Section was updated
15-Oct-2018	Version 9	Changed	Technical Specifications section was updated
01-Oct-2018	Version 8	Changed	Standard Features section was updated
02-Jul-2018	Version 7	Changed	Related options & Technical Specifications section was updated
05-Feb-2018	Version 6	Changed	Rack Models, Standard Features, and Technical Specifications were updated.
07-Aug-2017	Version 5	Added	Added new Baying kits and Door kits.
		Changed	Related Options section was revised.
27-Mar-2017	Version 4	Changed	Standard Features, Related Options and Technical Specifications were updated.
13-Feb-2017	Version 3	Changed	Reliability/Durability and Sidewall Panel Kits were revised.
13-Jan-2017	Version 2	Changed	Description for P9L17A was changed. Front left image was updated.
28-Nov-2016	Version 1	Added	New QuickSpecs



## Copyright

**Make the right purchase decision.**  
Contact our presales specialists.



---

© Copyright 2023 Hewlett Packard Enterprise Development LP. The information contained herein is subject to change without notice. The only warranties for Hewlett Packard Enterprise products and services are set forth in the express warranty statements accompanying such products and services. Nothing herein should be construed as constituting an additional warranty. Hewlett Packard Enterprise shall not be liable for technical or editorial errors or omissions contained herein.

c05324689 - 15754 - Worldwide - V13 - 04-December-2023