

Overview

HPE Edgeline OT Link Software

HPE Edgeline OT Link Platform and Workload Orchestrator Software

Software-defined intelligence that dramatically simplifies deployment and management of OT converged with IT in a secure and reliable way.

HPE Edgeline OT Link Platform and Workload Orchestrator Software bridges the gap between industrial and business systems for companies looking to implement simple, fast, and predictable Industrial Internet of Things (IIoT) solutions. Edgeline software and hardware work seamlessly together to allow companies to access and gain insights from data previously trapped inside fleets of manufacturing, process control, and other industrial equipment. It also offers data and device management so companies can optimize both how they run their business and how their customers' businesses operate.

- Rapid Converged OT+IT deployment with one touch provisioning
- Orchestrate OT+IT applications on edge optimized infrastructure in just a few clicks
- Protect Converged OT+IT with integrated security and enterprise-class reliability

Key elements of the platform:

- **HPE Edgeline Converged Edge Systems:** Provides the physical (electrical) means to acquire data from industrial devices.
 - **HPE Edgeline OT Link Platform software:** Brings data from OT into the digital domain in a standard, normalized manner. Numerous built-in and user-provided mission-critical applications can process, analyze, and act on the data from the edge.
 - **HPE Edgeline Workload Orchestrator software:** Manages the workflows and applications running on multiple Edgeline OT Link software instances from a central location.
-

Standard Features

Key Benefits

- Interworking with Legacy Equipment: Connect and digitize data from legacy industrial equipment and devices, merge it with data from modern equipment, and connect securely to the cloud.
- Easy Access to Operational Data: View, analyze, and develop actions on enterprise-wide OT data, including those from proprietary systems in an easy and reliable way.
- Simple Management of Equipment Fleets: Centrally orchestrate and deploy workflows and applications to edge systems without requiring personnel to go onsite or manage systems individually.
- Seamlessly Orchestrate OT and IT applications: Simple integration of Industrial equipment and applications allows focus on solutions rather than troubleshooting.
- Fast and Secure deployment: Extend to the cloud with proven integrated enterprise class security and reliability.

HPE Edgeline Workload Orchestrator

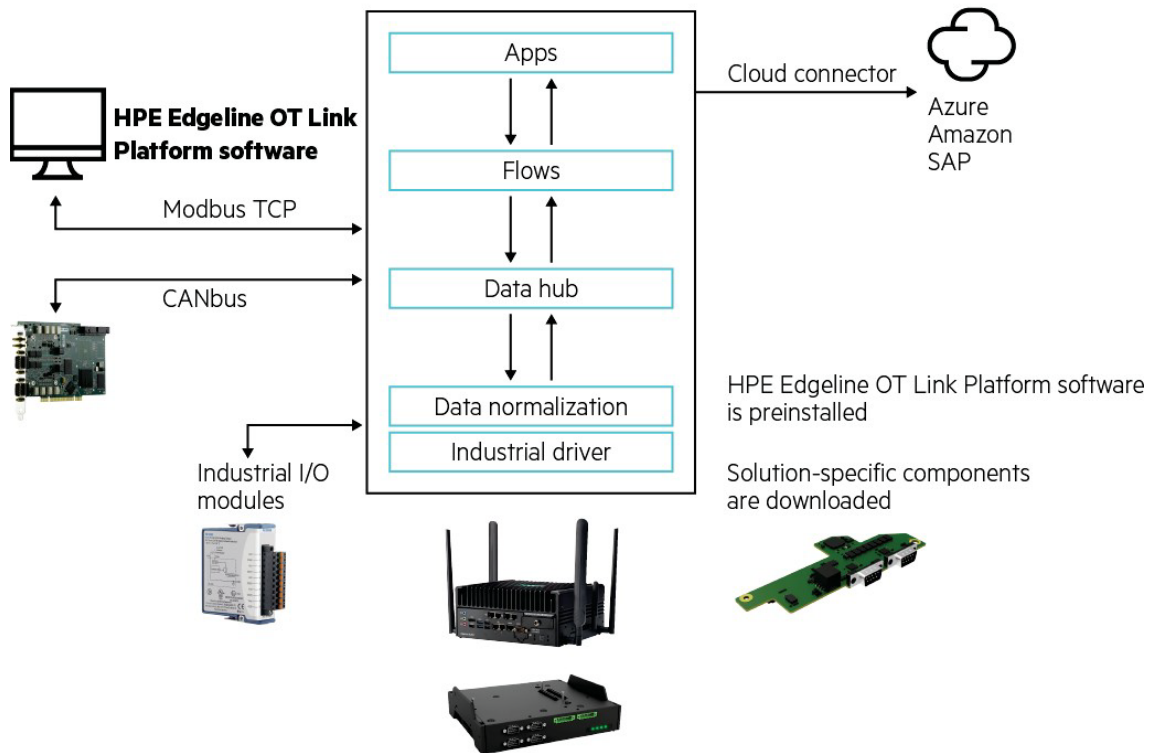


Figure 1: The HPE Edgeline OT Link Platform and Workload Orchestrator Stack



Standard Features

Edgeline OT Link standardizes transfer of industrial data to the IT domain

As the foundation for implementing an IIoT project, HPE Edgeline OT Link Platform software enables data acquisition (DAQ) from a wide variety of sources (things), and then turns that data into meaningful, actionable information. It is designed around a framework of connect, collect, analyze, and extend to transfer and make edge data useful.

- **Connect**—Physical and logical connectivity to MODBUS, CANbus, and more. The process starts with data ingested from things typically found in the operational world, such as devices in manufacturing facilities. These devices range from programmable logic controllers (PLCs) to SCADA systems to direct analog and digital data acquisition (DAQ) instruments.
- **Collect**—Drivers for endpoints, enabling data to be easily collected from various industrial devices. The built-in software drivers in the HPE Edgeline OT Link Platform software speak the language (protocol) of hundreds of physical industrial devices. Data can be seamlessly acquired from these devices, and control commands securely sent to the devices.
- **Analyze**—Manipulating data using built-in functions, JavaScript/Python scripts, or Docker containers. Once data is acquired, it must be pre-processed (normalized), and then published in a defined model. Doing so ensures the data is in the optimal format and available for use by mission-critical applications such as advanced analytics. The OT Link Platform includes the required software pre-processing modules, as well as a data repository that provides ready access to the resulting information.
- **Extend**—Freedom to send the data to the customer’s choice of public cloud, database, or ERP/CRM (enterprise resource planning/customer relationship management) system

To facilitate fast IIoT solution implementation, the HPE Edgeline OT Link Platform software follows a drag-and-drop methodology for creating data flows. These flows enable users to quickly and easily define how data acquired from the physical world is analyzed and acted upon. A wide array of prebuilt functions to apply against incoming data from data input connectors, mathematical functions, flow controllers, and output connectors.

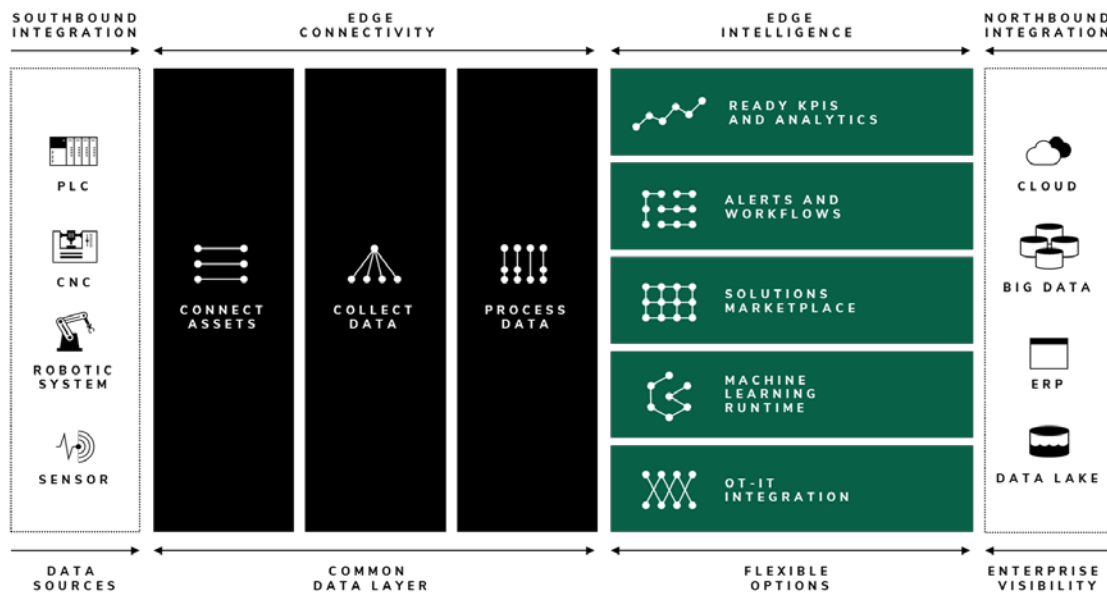


Figure 2. HPE Edgeline OT Link Platform architecture



Standard Features

Centralizing systems orchestration and management

The HPE Edgeline Workload Orchestrator enables users to centrally deploy and manage workloads running on multiple Edgeline systems. Users can deploy workflows and application containers to one or more Edgeline OT Link platforms located in the same or geographically distributed locations.

For example, a user can create a workflow and application set on an Edgeline OT Link system, and then using Workload Orchestrator, deploy the same configuration on additional systems running the Edgeline OT Link Platform software. By centralizing creation and deployment, Workload Orchestrator simplifies the provisioning of multiple systems that perform similar functions.

HPE Edgeline Workload Orchestrator provides centralized dashboards that depict the operational status across all Edgeline OT Link systems and consolidates information from those systems. Workload Orchestrator dashboards are user-defined and -created, enabling users to tailor the information displays.

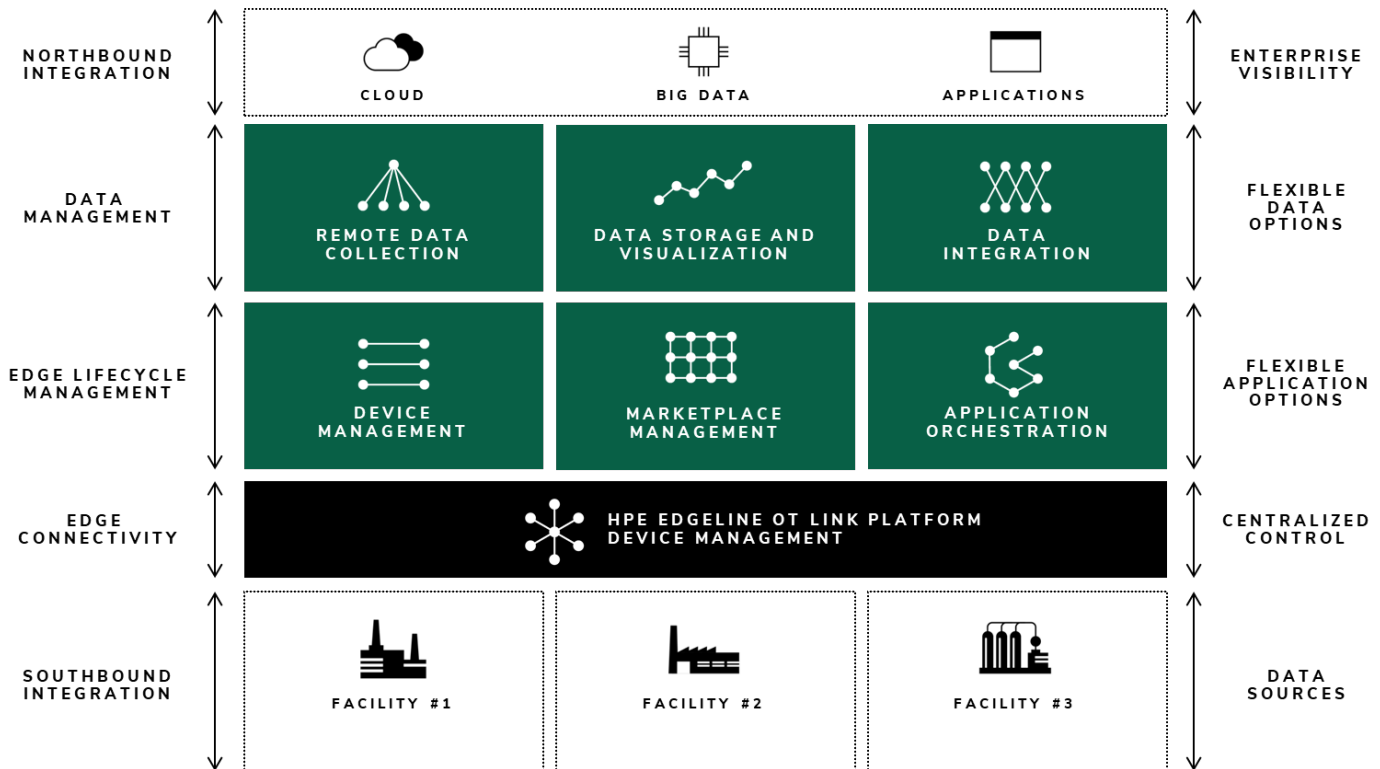


Figure 4. HPE Edgeline Workload Orchestrator architecture



Standard Features

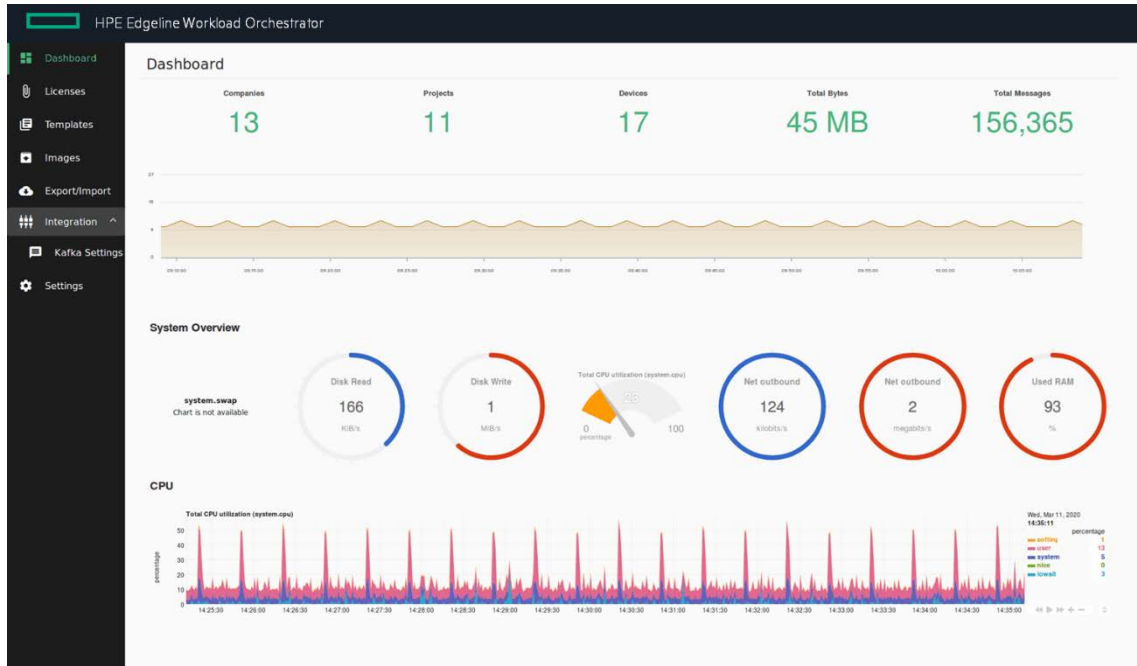


Figure 5. HPE Edgeline Workload Orchestrator Dashboard

Extending to cloud and data center IoT and enterprise IT platforms

A key benefit of HPE Edgeline OT Link Platform software and Edgeline Workload Orchestrator software is the ability to connect with and extend the capabilities of other popular IoT and enterprise IT platforms widely used to create data center IT, cloud, and IoT solutions— such as Microsoft® Azure®, Amazon Web Services (AWS), SAP®, and Google™. The Edgeline OT Link Platform provides an interface to these platforms through built-in connectors, enabling seamless data exchange with these external systems.



Figure 6. Example of anomaly detection using Edgeline OT Link



Configuration Information

HPE Edgeline OT Link Platform – Per Endpoint Licenses

Perpetual licenses with 3-year support and 3-year updates

HPE Edgeline OT Link Platform 1 System 3yr Support Perpetual E-LTU

R2E10AAE

Notes: Base License which includes 3 endpoint devices and 250 tags. This license never expires, but support and updates will cease after 3 years.

Add-ons for Base license

HPE Edgeline OT Link Platform 5 Endpoints 3yr Support Perpetual E-LTU

R2E11AAE

Notes: Add-on for the Base License. Connect up to 5 more endpoint devices on a system (additional to the 3 that were included).

HPE Edgeline OT Link Platform 500 Tags 3yr Support Perpetual E-LTU

R2E12AAE

Notes: Add-on for the Base License. Collect up to 500 more tags from endpoint devices on a system (additional to the 250 that were included)

Annual licenses with 1-year support and 1-year updates

HPE Edgeline OT Link Platform 1 System 1yr Support Annual E-LTU

R2E13AAE

Notes: Base License which includes 3 endpoint devices and 250 tags, with support and updates for 1 year. This license will need to be renewed each year.

Add-ons for Base license

HPE Edgeline OT Link Platform 5 Endpoints 1yr Support Annual E-LTU

R2E14AAE

Notes: Add-on for the Base License. Connect up to 5 more endpoint devices on a system (additional to the 3 that were included).

HPE Edgeline OT Link Platform 500 Tags 1yr Support Annual E-LTU

R2E15AAE

Notes: Add-on for the Base License. Collect up to 500 more tags from endpoint devices on a system (additional to the 250 that were included).

Platform Support

Notes: The Edgeline OT Link platform is designed to run on bare metal systems or inside a virtualized environment. The Edgeline Workload orchestrator only supports a virtualized environment.

HPE Edgeline OT Link Platform

- ISO for bare metal installation (only on supported hardware platforms)
- OVA for VMware ESXi, VMware Workstation or VirtualBox

Supported Platforms

Notes: HPE only validates and supports the Edgeline OT Link platform software on these systems. The supported options for each platform are shown in the Reference Guide. Access to all server peripherals may not be available in virtualized environments.

HPE Edgeline EL300

HPE Edgeline EL300 v2 Converged Edge System

P25828-B21

HPE Edgeline EL1000

HPE Edgeline EL1000 10GbE 2xSFP+ v2 Pass Thru System

880273-B21

HPE Edgeline EL1000 1GbE 2xRJ45 v2 Pass Thru System

880271-B21

HPE Edgeline EL4000

HPE Edgeline EL4000 4x10GbE 2xQSFP+ v2 Pass Thru System

879799-B21

HPE Edgeline EL4000 10GbE 2xSFP+ v2 Switch System

879808-B21



Configuration Information

Server Blades Supported

HPE ProLiant m710x E3-1585Lv5 3.1GHz 4-core 45W Configure-to-order Server Cartridge	833105-B21
HPE ProLiant m510 Xeon D-1548 2.0GHz 8-core Configure-to-order Server Cartridge	814688-B21
HPE ProLiant m510 Xeon D-1587 1.7GHz 16-core Configure-to-order Server Cartridge	858545-B21

Supported Industrial devices and connectors

Please refer to the Reference Guide:

[HPE Edgeline OT Link Platform and HPE Edgeline Workload Orchestration Resource Reference Guide.](#)



Summary of Changes

Date	Version History	Action	Description of Change
15-Sep-2021	Version 5	Changed	Overview, Configuration Information and Technical Specifications sections were updated Services and Support Pointnext Tech Care and Complete Care information added
07-Jun-2021	Version 4	Changed	Overview, Standard Features and Configuration Information sections were updated Added Site License skus and descriptions
15-Mar-2021	Version 3	Changed	Added new pictures and updated descriptions
10-Jun-2019	Version 2	Changed	Standard Features and Configuration Information sections were updated
03-Jun-2019	Version 1	Created	New QuickSpecs



Copyright

Make the right purchase decision.
Contact our presales specialists.



Chat



Email



Call



Get updates



© Copyright 2021 Hewlett Packard Enterprise Development LP. The information contained herein is subject to change without notice. The only warranties for Hewlett Packard Enterprise products and services are set forth in the express warranty statements accompanying such products and services. Nothing herein should be construed as constituting an additional warranty. Hewlett Packard Enterprise shall not be liable for technical or editorial errors or omissions contained herein.

Acknowledgments

Microsoft® and Windows® are U.S. registered trademarks of the Microsoft group of companies.

Red Hat® is a registered trademark of Red Hat, Inc. in the United States and other countries.

a00067736enw - 16423 - Worldwide - V5 - 15-September-2021