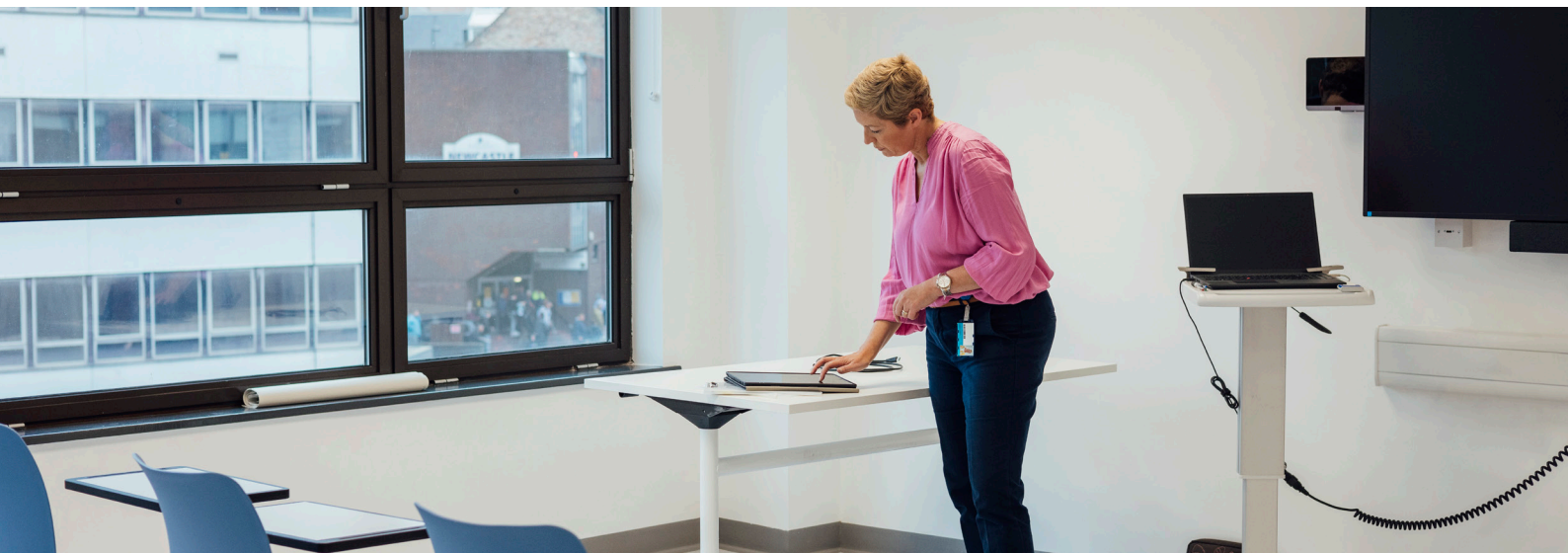




# HPE Aruba Networking and Ekahau

Easily unlock the full value of HPE Aruba Networking  
Central





**Why HPE Aruba Networking and Ekahau**

- Eliminate the tedious tasks of map management and manual AP plotting.
- Streamline ongoing network maintenance and management with straightforward, step-by-step optimization guides.
- Design networks using the full catalog of HPE Aruba Networking APs and antenna options, including the latest tri-band 2.4/5/6 GHz radios.
- Troubleshoot efficiently as network requirements and environments evolve, ensuring your infrastructure performs at its best.

**Overview**

The integration of Ekahau Zero-Touch Dashboard Provisioning with HPE Aruba Networking Central brings unprecedented ease and efficiency to network provisioning and management. Utilizing the precision of the Ekahau Sidekick 2 and Ekahau software, this joint solution automatically identifies and maps access point (AP) locations directly into the HPE Aruba Networking Central dashboard. By simply walking around the site with the Ekahau Sidekick 2, you can capture accurate location data. With just one click, export the results to create a fully provisioned network based on trusted and verified data, eliminating manual entry errors, and saving significant time.

Benefiting both new and existing networks, the joint solution leverages advanced location-based services and analytics to improve operations, client management, and data-driven decision-making. Features such as live client monitoring and detailed network health insights streamline processes and optimize resource utilization.

The joint solution from HPE Aruba Networking and Ekahau enables precise provisioning and ongoing efficiency, reducing the time and effort typically required for manual AP placement and improving network management throughout its lifecycle.

**About Ekahau**

Ekahau enables IT professionals to take control of their Wi-Fi networks, making it easier than ever before to manage, maintain and optimize their wireless networks for the highest levels of performance and reliability. Organizations of every size—including the world’s biggest brands and events—use our software and hardware products to optimize their business-critical wireless networks. Just go for a walk with the Sidekick 2 and get instant and actionable recommendations for improving your Wi-Fi with simple, step-by-step instructions that ensure your network is always ready to meet the needs of your business.



## How our joint solution works

The integration of HPE Aruba Networking and Ekahau simplifies the mapping and management of your wireless APs through a seamless process. Here's how it works:

- **Data collection:** Walk around your site with the Ekahau Sidekick 2 to capture broadcasted Wi-Fi data.
- **AP mapping:** The solution uses the measured survey data to accurately triangulate and map the locations of your installed APs on the HPE Aruba Networking Central dashboard. It also gathers essential information such as MAC addresses, custom AP names, and power settings.
- **Data export:** Export the survey results from Ekahau Insights via the HPE Aruba Networking API to achieve a fully provisioned HPE Aruba Networking Central dashboard. This ensures every AP is identified, with each location validated.
- **Optimization:** Utilize Ekahau Optimizer to review and implement actionable recommendations, leveraging the same data collected to continuously improve and adapt your Wi-Fi performance as your network evolves.

This integrated approach eliminates the need for tedious manual data entry and ensures accurate, efficient network management and troubleshooting.

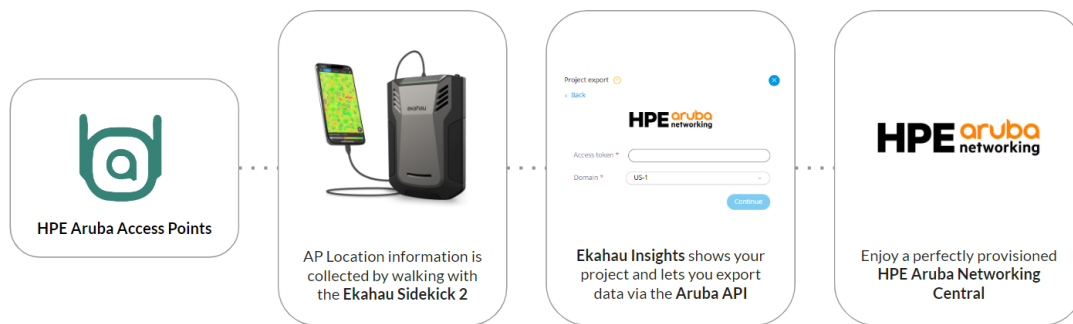


Figure 1. HPE Aruba Networking and Ekahau integration diagram

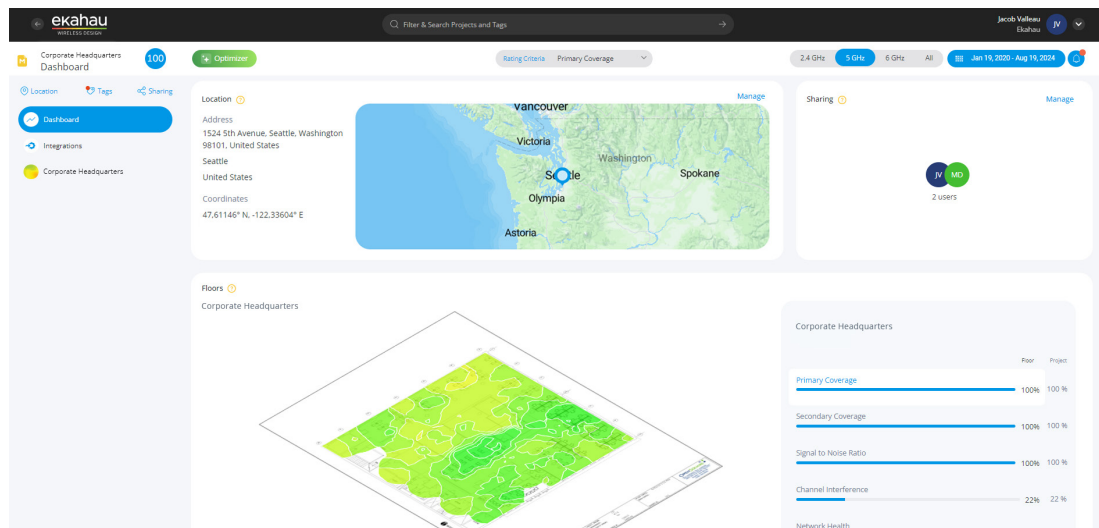


Figure 2. Ekahau dashboard



## Our solution partners

# ekahau

Ekahau is part of Ziff Davis, Inc. (NASDAQ: ZD), a leading internet information and services company consisting of a portfolio of brands that collectively reach more than 240 million people each month. Ekahau is headquartered in Seattle, Washington, with offices around the globe, including an R&D and Product team based out of Helsinki, Finland.

[ekahau.com](https://ekahau.com)

Phone number: 1-866-435-2428  
1524 5th Ave #300, Seattle,  
WA 98101

## Certified interoperability

As an HPE Aruba Networking Technology Partner, Ekahau has certified its interoperability with HPE Aruba Networking Central. The integration is streamlined and supported by detailed configuration guides and documentation developed in collaboration with both teams. Available to any HPE Aruba Networking customer with a Sidekick 2 and an active Ekahau Connect Subscription, this partnership ensures a seamless setup and the quickest route to exceptional Wi-Fi performance.

## Summary

The integration of Ekahau with HPE Aruba Networking Central simplifies network provisioning and optimization. Whether you're setting up a new network, undergoing a refresh, or managing ongoing changes, this integration saves time and ensures precise dashboard provisioning. Contact your local sales representative to see how Ekahau and HPE Aruba Networking can deliver high-performance wireless networks with minimal effort.

**Make the right purchase decision.  
Contact our presales specialists.**



**Chat now (sales)**



**Call now**

Visit [ArubaNetworks.com](https://ArubaNetworks.com)



**Get updates**

**Hewlett Packard  
Enterprise**

© Copyright 2024 Hewlett Packard Enterprise Development LP. The information contained herein is subject to change without notice. The only warranties for Hewlett Packard Enterprise products and services are set forth in the express warranty statements accompanying such products and services. Nothing herein should be construed as constituting an additional warranty. Hewlett Packard Enterprise shall not be liable for technical or editorial errors or omissions contained herein.

All third-party marks are property of their respective owners.

PSO\_HPEANWandEkahau\_RVK\_091924 a00142560ENW