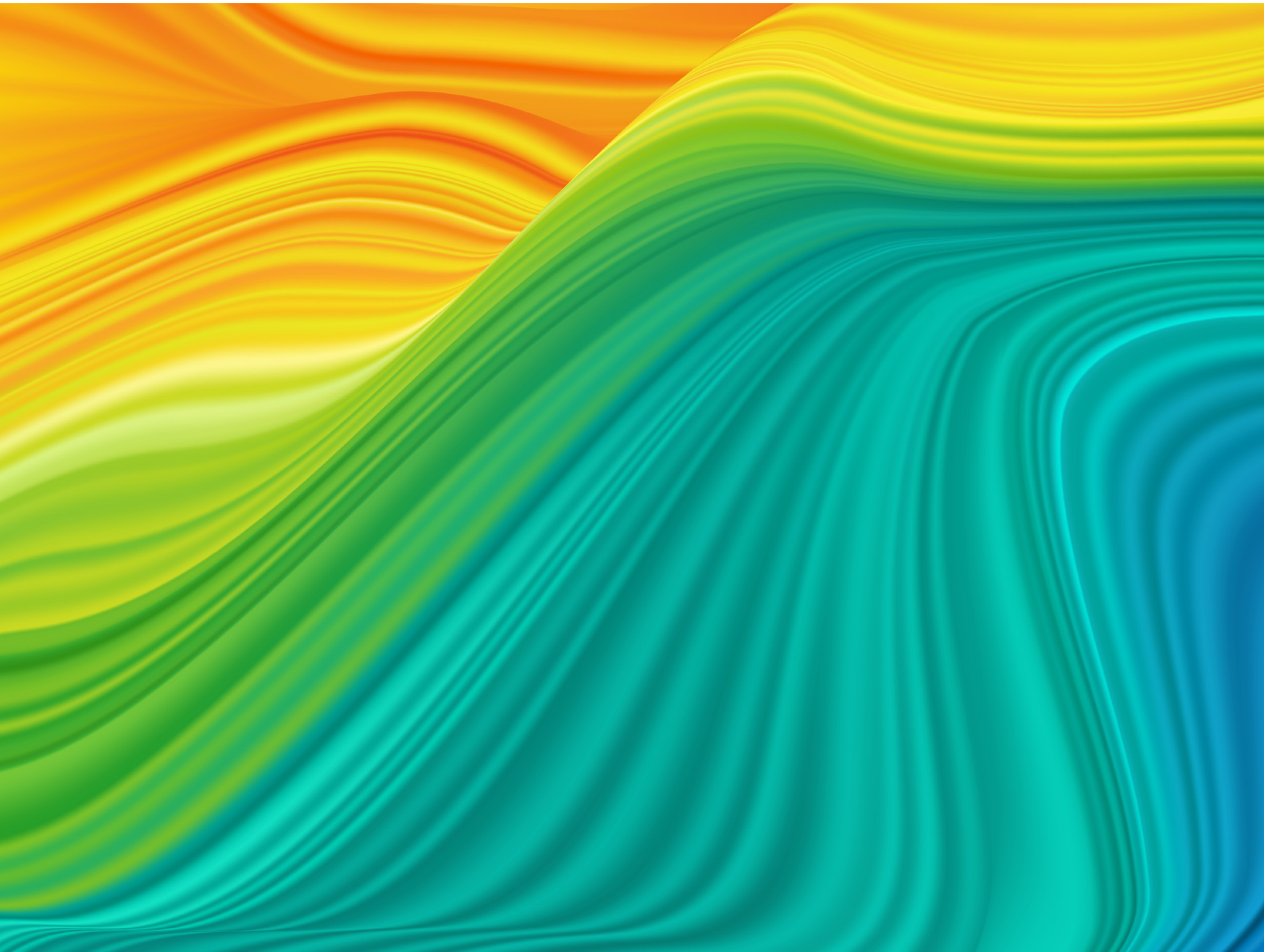


HPE Aruba Networking 730 Series Campus Access Points

High performance midrange 802.11be Wi-Fi 7
enterprise access points for campus deployments

HPE 
GreenLake



All 730 Series Campus Access Points require an HPE Aruba Networking Central license.

See [HPE Aruba Networking Central SaaS Subscriptions Ordering Guide](#) for supported licenses and features.

Table 1. Select AP model.

| Part number | Description | Configuration comments |
|--|---|--|
| Internal antenna access points | | |
| S1G39A | HPE Aruba Networking AP-735 (EG) Tri Radio 2x2 Wi-Fi 7 Internal Antennas Campus Access Point | Add mount kit |
| S1G40A | HPE Aruba Networking AP-735 (IL) Tri Radio 2x2 Wi-Fi 7 Internal Antennas Campus Access Point | Add mount kit |
| S1G41A | HPE Aruba Networking AP-735 (JP) Tri Radio 2x2 Wi-Fi 7 Internal Antennas Campus Access Point | Add mount kit |
| S1G42A | HPE Aruba Networking AP-735 (RW) Tri Radio 2x2 Wi-Fi 7 Internal Antennas Campus Access Point | Add mount kit |
| S1G43A | HPE Aruba Networking AP-735 (US) Tri Radio 2x2 Wi-Fi 7 Internal Antennas Campus Access Point | Add mount kit |
| Internal antenna access points – eco-friendly 5-packs | | |
| S0H12A | HPE Aruba Networking AP-735 (RW) Tri Radio 2x2 Wi-Fi 7 Internal Antennas 5-Pack Campus Access Point | Add 5 mount kits; eco-pack includes one JY728A console adapter cable |
| S0H13A | HPE Aruba Networking AP-735 (US) Tri Radio 2x2 Wi-Fi 7 Internal Antennas 5-Pack Campus Access Point | Add 5 mount kits; eco-pack includes one JY728A console adapter cable |
| External antenna access points | | |
| S1G29A | HPE Aruba Networking AP-734 (EG) Tri Radio 2x2 Wi-Fi 7 External Antennas Campus Access Point | Add mount kit, add antennas |
| S1G30A | HPE Aruba Networking AP-734 (IL) Tri Radio 2x2 Wi-Fi 7 External Antennas Campus Access Point | Add mount kit, add antennas |
| S1G32A | HPE Aruba Networking AP-734 (RW) Tri Radio 2x2 Wi-Fi 7 External Antennas Campus Access Point | Add mount kit, add antennas |
| S1G33A | HPE Aruba Networking AP-734 (US) Tri Radio 2x2 Wi-Fi 7 External Antennas Campus Access Point | Add mount kit, add antennas |



Table 1. Select AP model.

| Part number | Description | Configuration comments |
|--|--|-----------------------------|
| Internal antenna access points – TAA models | | |
| S1G44A | HPE Aruba Networking AP-735 (EG) Tri Radio 2x2 Wi-Fi 7 Internal Antennas TAA Campus Access Point | Add mount kit |
| S1G45A | HPE Aruba Networking AP-735 (IL) Tri Radio 2x2 Wi-Fi 7 Internal Antennas TAA Campus Access Point | Add mount kit |
| S1G46A | HPE Aruba Networking AP-735 (JP) Tri Radio 2x2 Wi-Fi 7 Internal Antennas TAA Campus Access Point | Add mount kit |
| S1G47A | HPE Aruba Networking AP-735 (RW) Tri Radio 2x2 Wi-Fi 7 Internal Antennas TAA Campus Access Point | Add mount kit |
| S1G48A | HPE Aruba Networking AP-735 (US) Tri Radio 2x2 Wi-Fi 7 Internal Antennas TAA Campus Access Point | Add mount kit |
| External antenna access points – TAA models | | |
| S1G34A | HPE Aruba Networking AP-734 (EG) Tri Radio 2x2 Wi-Fi 7 External Antennas TAA Campus Access Point | Add mount kit, add antennas |
| S1G35A | HPE Aruba Networking AP-734 (IL) Tri Radio 2x2 Wi-Fi 7 External Antennas TAA Campus Access Point | Add mount kit, add antennas |
| S1G37A | HPE Aruba Networking AP-734 (RW) Tri Radio 2x2 Wi-Fi 7 External Antennas TAA Campus Access Point | Add mount kit, add antennas |
| S1G38A | HPE Aruba Networking AP-734 (US) Tri Radio 2x2 Wi-Fi 7 External Antennas TAA Campus Access Point | Add mount kit, add antennas |

Table 2. Select AP mount kit

| Part number | Description | Configuration comments |
|-------------------|--|---|
| Mount kits | | |
| S4K79A | HPE Aruba Networking AP-MNT-U Campus Access Point Type U Universal Mount Bracket Kit | Note: Kit contains mounts for 1 access point |
| S0J40A | HPE Aruba Networking AP-MNT-MP10-U Campus AP 10-Pack Universal Mount Bracket Kit | Note: this kit contains mounts for 10 access points |
| R3J15A | HPE Aruba Networking AP-MNT-A Campus AP Type A Suspended Ceiling Rail Flat 9/16 Mount Bracket Kit | |
| JZ370A | HPE Aruba Networking AP-MNT-MP10-A Campus AP 10-Pack 9/16 Flat Ceiling Rail Mount Bracket Kit | Note: this kit contains mounts for 10 access points |
| R3J16A | HPE Aruba Networking AP-MNT-B Campus AP Type B Suspended Ceiling Rail Flat 15/16 Mount Bracket Kit | |
| Q9G69A | HPE Aruba Networking AP-MNT-MP10-B Campus AP 10-Pack 15/16 Flat Ceiling Rail Mount Bracket Kit | Note: this kit contains mounts for 10 access points |



Table 2. Select AP mount kit

| Part number | Description | Configuration comments |
|-------------------|---|---|
| Mount kits | | |
| R6T34A | HPE Aruba Networking AP-MNT-MP10-B1 Campus AP 10-Pack 15/16 Adj Flat Ceiling Rail Mount Bracket Kit | Note: this kit contains mounts for 10 access points |
| R3J17A | HPE Aruba Networking AP-MNT-C Campus AP Type C Suspended Ceiling Rail 9/16 Profile Mnt Bracket Kit | |
| Q9G70A | HPE Aruba Networking AP-MNT-MP10-C Campus AP 10-Pack Profile 9/16 Ceiling Rail Mount Bracket Kit | Note: this kit contains mounts for 10 access points |
| R3J18A | HPE Aruba Networking AP-MNT-D Campus AP Type D Solid Surface Mount Bracket Kit | |
| Q9G71A | HPE Aruba Networking AP-MNT-MP10-D Campus AP 10-Pack Solid Surface Mount Bracket Kit | Note: this kit contains mounts for 10 access points |
| R3J19A | HPE Aruba Networking AP-MNT-E Campus AP Type E Wall-Box Mount Bracket Kit | |
| R1C72A | HPE Aruba Networking AP-MNT-MP10-E Campus AP 10-Pack Wall-box Mount Bracket Kit | Note: this kit contains mounts for 10 access points |

Table 3. Select AP antennas (AP-734 only)

| Part number | Quantity needed | Description | Configuration comments |
|--|-----------------|--|--------------------------|
| Indoor AP Antennas (AP-734 antenna interfaces: A: 2x RP-SMA female combined 2.4 GHz & 5 GHz, B: 2x RP-SMA female 6 GHz) | | | |
| S1F79A | 2 (A) + 2 (B) | HPE Aruba Networking AP-ANT-311 Direct-Mount RP-SMA Tri-Band 1x1 Omni Dipole Antenna | Direct mount/attach |
| S1F80A | 2 (A) + 2 (B) | HPE Aruba Networking AP-ANT-312 Direct-Mount RP-SMA Tri-Band 1x1 Low-Profile Omni Dipole Antenna | Direct mount/attach |
| S1F81A | 2 (A) + 2 (B) | HPE Aruba Networking AP-ANT-313 Cabled RP-SMA Tri-Band 1x1 Omni Dipole Antenna | Cabled (pigtail), 300 mm |
| S1F85A | 1 (A) + 1 (B) | HPE Aruba Networking AP-ANT-320 Cabled RP-SMA Tri-Band 2x2 Downtilt Omni Ceiling Antenna | Cabled (pigtail), 300 mm |
| S1F86A | 1 (A) + 1 (B) | HPE Aruba Networking AP-ANT-325 Cabled RP-SMA Tri-Band 2x2 Medium Gain Directional Panel Antenna | Cabled (pigtail), 300 mm |
| S1F87A | 1 (A) + 1 (B) | HPE Aruba Networking AP-ANT-328 Cabled RP-SMA Tri-Band 2x2 High Gain Directional Panel Antenna | Cabled (pigtail), 300 mm |
| S1F82A | 1 (A + B) | HPE Aruba Networking AP-ANT-340 Cabled RP-SMA Tri-Band 4x4 Downtilt Omni Ceiling Antenna | Cabled (pigtail), 300 mm |
| S1F83A | 1 (A + B) | HPE Aruba Networking AP-ANT-345 Cabled RP-SMA Tri-Band 4x4 Medium Gain Directional Panel Antenna | Cabled (pigtail), 300 mm |
| S1F84A | 1 (A + B) | HPE Aruba Networking AP-ANT-348 Cabled RP-SMA Tri-Band 4x4 High Gain Directional Panel Antenna | Cabled (pigtail), 300 mm |



Table 4. Add antenna mount kit (optional)

| Part number | Quantity needed | Description | Configuration comments |
|---------------------------|-----------------|--|--|
| Antenna mount kits | | | |
| S1J09A | 1 per antenna | HPE Aruba Networking AP-ANT-MNT-U Universal AZ/EL Adjustable Antenna Pole/Wall Mount Kit | Compatible with AP-ANT-325, AP-ANT-328, AP-ANT-345, and AP-ANT-348 |

Table 5. Select AP powering accessory (optional)

| Part number | Description | Configuration comments |
|--------------------------|---|--|
| Power accessories | | |
| R3K00A | HPE Aruba Networking AP-AC2-12B 12V/48W AC/DC Desktop Style Power Adapter with 2.1/5.5 mm Connector | Add AC power cord |
| R6P67A | HPE Aruba Networking AP-POE-ATSR 1-Port Smart Rate 802.3at 30W Midspan Injector | Add AC power cord USB port disabled (without IPM) |
| R1C73A | HPE Aruba Networking AP-POE-BTSR 1-Port Smart Rate 802.3bt 60W Midspan Injector | Add AC power cord |
| S3J26A | HPE Aruba Networking AP-POE-BT10 1-Port Smart Rate 802.3bt 60W Midspan Injector | Add AC power cord |
| JW113A | HPE Aruba Networking PC-AC-ARG 250V/10A 1.8m C13 to IRAM 2073 (AR) AC Power Cord | |
| JW114A | HPE Aruba Networking PC-AC-AUS 250V/10A 1.8 m C13 to AS3112 (AU) AC Power Cord | |
| JW115A | HPE Aruba Networking PC-AC-BR 250V/10A 1.8 m C13 to NBR 14136 (BR) AC Power Cord | |
| JW116A | HPE Aruba Networking PC-AC-CHN 250V/10A 1.8 m C13 to GB2099 (CH) AC Power Cord | |
| JW117A | HPE Aruba Networking PC-AC-DEN 250V/10A 1.8 m C13 to AFSNIT 107-2-D1 (DK) AC Power Cord | |
| JW118A | HPE Aruba Networking PC-AC-EC 250V/10A 1.8 m C13 to CEE7/7 (EU) AC Power Cord | |
| JW119A | HPE Aruba Networking PC-AC-IN 250V/6A 1.8 m C13 to IS1293 (IN) AC Power Cord | |
| JW120A | HPE Aruba Networking PC-AC-IL 250V/10A 1.8 m C13 to SI32 (IL) AC Power Cord | |
| JW121A | HPE Aruba Networking PC-AC-IT 250V/10A 1.8 m C13 to CEI 23-50 (IT) AC Power Cord | |
| JW122A | HPE Aruba Networking PC-AC-JPN 125V/12A 1.8 m C13 to JISC 8303 (JP) AC Power Cord | |
| JW123A | HPE Aruba Networking PC-AC-KOR 250V/7A 1.8 m C13 to KSC 8305 (KR) AC Power Cord | |



Table 5. Select AP powering accessory (optional)

| Part number | Description | Configuration comments |
|--------------------------|---|------------------------|
| Power accessories | | |
| JW124A | HPE Aruba Networking PC-AC-NA 125V/10A 1.8 m C13 to NEMA 5-15P (NA) AC Power Cord | |
| JW125A | HPE Aruba Networking PC-AC-SWI 220V/10A 1.8 m C13 to SEV 1011 (SW) AC Power Cord | |
| S0P44A | HPE Aruba Networking PC-AC-TH 250V/10A 1.8 m C13 to TIS 166-2549 (TH) AC Power Cord | |
| JW126A | HPE Aruba Networking PC-AC-TW 125V/7A 1.8 m C13 to CNS 10917 (TW) AC Power Cord | |
| JW127A | HPE Aruba Networking PC-AC-UK 250V/10A 1.8 m C13 to BS1363 (UK) AC Power Cord | |
| JW128A | HPE Aruba Networking PC-AC-ZA 250V/10A 1.8 m C13 to SANS 164-1 (ZA) AC Power Cord | |

Table 6. Add AP cosmetic snap-on cover (optional)

| Part number | Description | Configuration comments |
|------------------------|---|--|
| Cosmetic covers | | |
| S1H25A | HPE Aruba Networking AP-730-CVR-20 Access Point 20-pack White Non-Glossy Snap-On Covers | Note: kit contains covers for 20 access points |

Table 7. Add flexible ethernet extension cable (optional)

| Part number | Description | Configuration comments |
|--|---|------------------------------|
| Flexible ethernet extension cable | | |
| R8L34A | HPE Aruba Networking AP-CBL-EXT10 10-pack CAT6A Ethernet Extension Cables | Note: kit contains 10 cables |



Table 8. Select other accessories (optional)

| Part number | Description | Configuration comments |
|--------------------------|--|--|
| Other accessories | | |
| JY728A | HPE Aruba Networking AP-CBL-SERU Micro-USB TTL3.3V to USB2.0 AP Console Adapter Cable | Drivers available on the HPE Aruba Networking Support Center |
| R6Q99A | HPE Aruba Networking AP-MOD-SERU Micro-USB TTL3.3V to RJ45 RS232 AP Console Adapter Module | |
| R2X45A | HPE Aruba Networking AP-USB-ZB External USB based Dongle with Zigbee and BLE for AP | Single USB dongle |
| R2Y09A | HPE Aruba Networking AP-USB-ZB 10-pk External USB based Dongle with Zigbee and BLE for AP | 10-pack USB dongle |
| R2Y10A | HPE Aruba Networking AP-USB-ZB 50-pk External USB based Dongle with Zigbee and BLE for AP | 50-pack USB dongle |
| SOJ39A | HPE Aruba Networking AP-MNT-MP10-AP Campus AP 10-Pack Mount Brace Spare Kit | Note: this kit contains mount braces for 10 access points |

Make the right purchase decision.
Contact our presales specialists.

