

# **Product end-of-life disassembly instructions**

## Product end-of-life disassembly instructions

Product category: Networking

### Marketing Name / Model [List multiple models if applicable.]

Name / Model #1 Aruba 7030 (RW) 64 AP Branch Cntrl

Name / Model #2 Aruba 7030 (US) 64 AP Branch Cntrl

**Purpose:** The document is intended for use by end-of-life recyclers or treatment facilities. It provides the basic instructions for the disassembly of HPE products to remove components and materials requiring selective treatment, as defined by Directive 2012/19/EU of the European Parliament and of the Council on Waste Electrical and Electronic Equipment (WEEE).

### 1.0 Items requiring selective treatment

- 1.1 Items listed below are classified as requiring selective treatment.
- 1.2 Enter the quantity of items contained within the product which require selective treatment in the right column, as applicable.

Item description	Notes	Quantity of items included in product
Printed Circuit Boards (PCB) or Printed Circuit Assemblies (PCA)	With a surface greater than 10 sq cm	1
Batteries	All types including standard alkaline and lithium coin or button style batteries	0
Mercury-containing components	For example, mercury in lamps, display backlights, scanner lamps, switches, batteries	0
Liquid Crystal Displays (LCD) with a surface greater than 100 sq cm	Includes background illuminated displays with gas discharge lamps	0
Cathode Ray Tubes (CRT)	Include the cartridges, print heads, tubes, vent chambers, and service stations.	0
Capacitors / condensers (Containing PCB/PCT)		758
Electrolytic Capacitors / Condensers measuring greater than 2.5 cm in diameter or height		0
External electrical cables and cords		0
Gas Discharge Lamps		0
Plastics containing Brominated Flame Retardants weighing > 25 grams (not including PCBs or PCAs already listed as a separate item above)		0
Components and parts containing toner and ink, including liquids, semi-liquids (gel/paste) and toner	Include the cartridges, print heads, tubes, vent chambers, and service stations.	0
Components and waste containing asbestos		0
Components, parts and materials containing refractory ceramic fibers		0
Components, parts and materials containing radioactive substances		0

## 2.0 Tools required

2.1 List the type and size of the tools that would typically be used to disassemble the product to a point where components and materials requiring selective treatment can be removed.

Tool description	Tool size (if applicable)
Description #1 screwdriver phillips #1	
Description #2 screwdriver phillips #2	
Description #3 diagonal pliers	
Description #4	
Description #5	

## 3.0 Product disassembly process

3.1 List the basic steps that should typically be followed to remove components and materials requiring selective treatment:

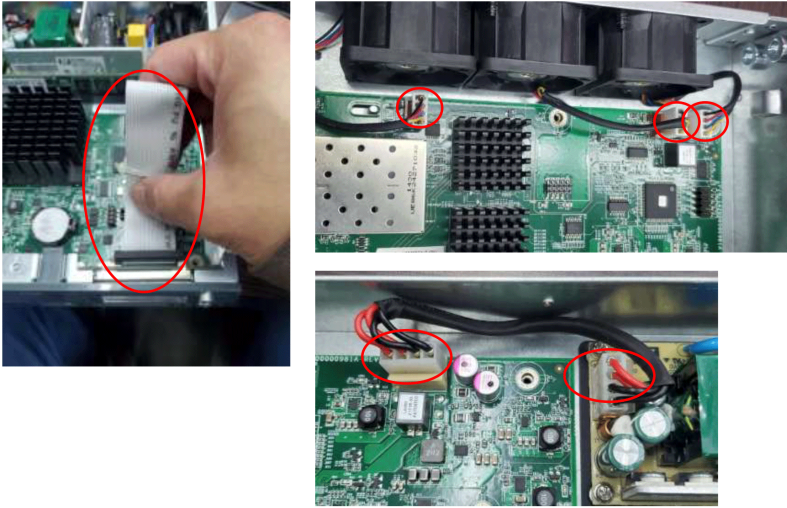
- a. Remove the cover with screwdriver phillips #1
- b. Remove the cables.
- c. Remove the main PCBA with screwdriver phillips #2
- d. Remove the battery \*1 and SoDIMM\*1
- e. Remove the PSU with screwdriver phillips #2
- f. Remove the Fan\*3 with screwdriver phillips #2 and diagonal pliers
- g. Remove the front PCBA from base with screwdriver phillips #1 and remove the button.
- h. Remove the front bezel

3.2 Optional Graphic. If the disassembly process is complex, insert a graphic illustration below to identify the items contained in the product that require selective treatment (with descriptions and arrows identifying locations).

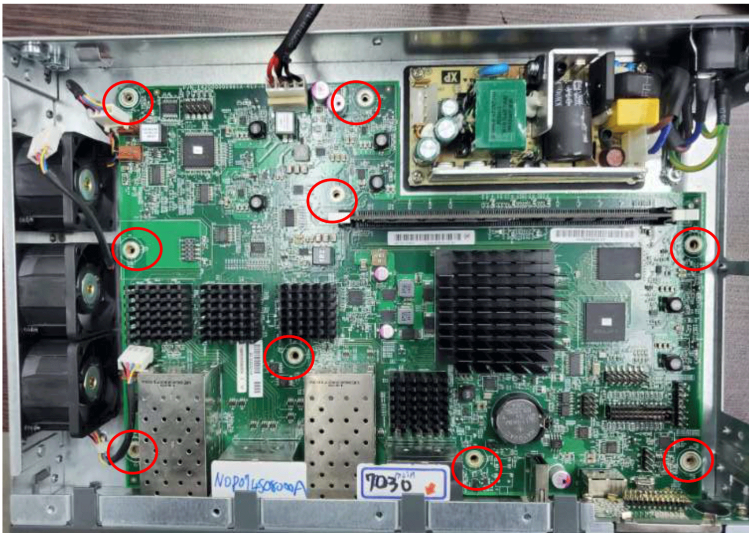
### Step 1.



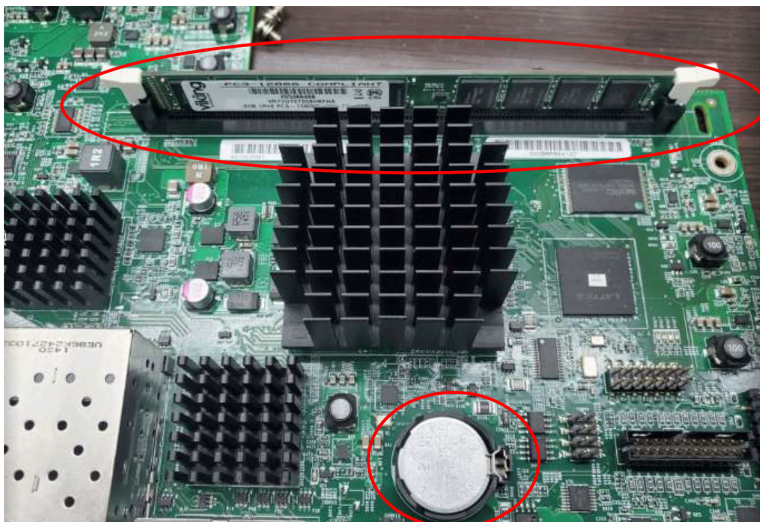
Step 2.



Step 3.



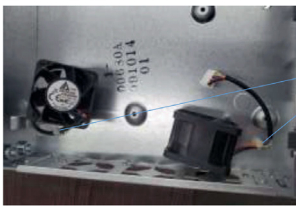
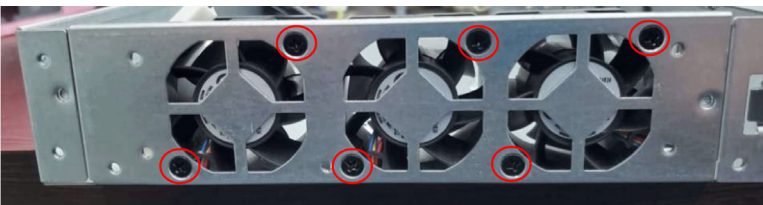
Step 4.



Step 5.

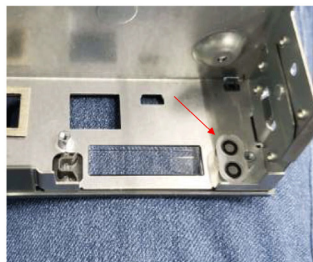


Step 6.

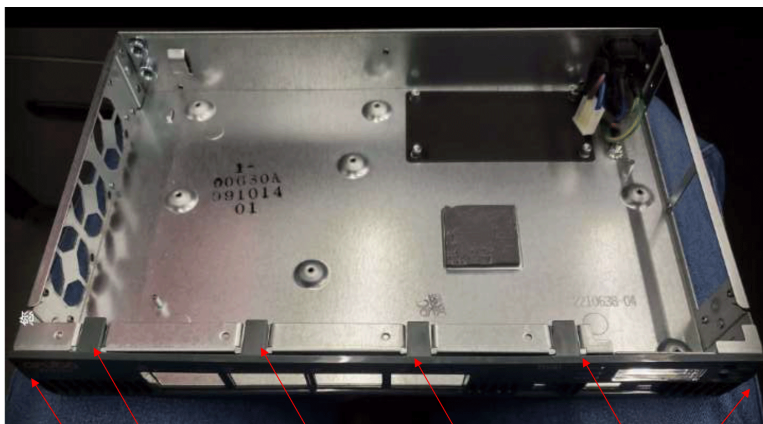


Using diagonal pliers to remove fan

Step 7.



## Step 8.



Remove hooks

[Visit HPE.com](https://www.hpe.com)

[Chat now](#)

© Copyright 2025 Hewlett Packard Enterprise Development LP. The information contained herein is subject to change without notice. The only warranties Hewlett Packard Enterprise products and services are set forth in the express warranty statements accompanying such products and services. Nothing herein should be construed as constituting an additional warranty. Hewlett Packard Enterprise shall not be liable for technical or editorial errors or omissions contained herein.

a00050666ENW, Rev. 1

HEWLETT PACKARD ENTERPRISE

[hpe.com](https://www.hpe.com)

